



Insignia Flex 11.6 Battery Replacement

This guide will help guide you in replacing the battery for the device.

Written By: Connor Sweeney



INTRODUCTION


If your Insignia Flex 11.6 is not holding a charge or is not starting up, use this guide in replacing the battery.

TOOLS:

- [Plastic Cards](#) (1)
 - [iFixit Opening Tools](#) (1)
 - [JIS Driver Set](#) (1)
-

Step 1 — Battery



 Before working on the device, make sure the device is off and not plugged into any power source for safety reasons. Failure to comply could result in injury.

- Detach the keyboard from the screen in 2 different places by putting one hand on the keyboard while gently pulling up on the screen with the other hand.

Step 2



- Remove the two 6.1 mm Phillips J000 screws from the bottom of the device. Use Phillips Screwdriver size J1.

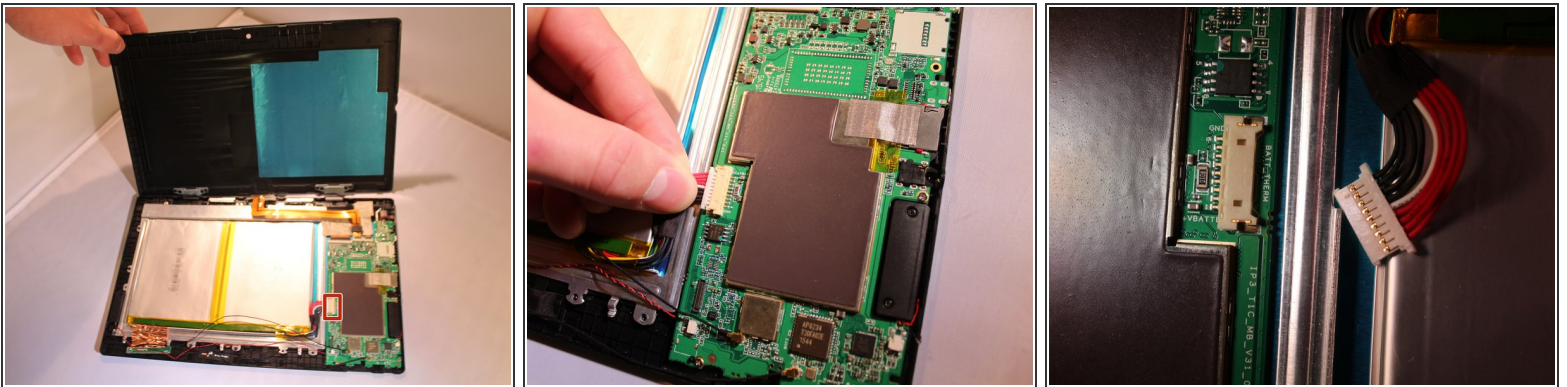
 If any screws are stripped, refer to the iFixit guide for [how to remove a stripped screw](#).

Step 3



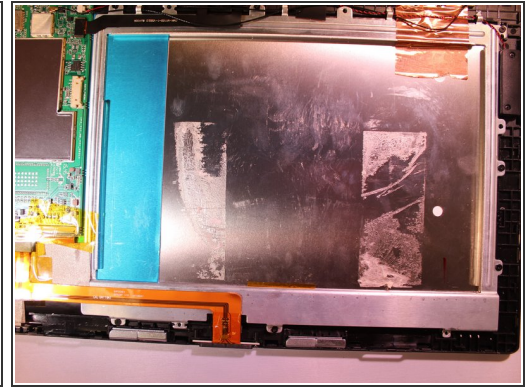
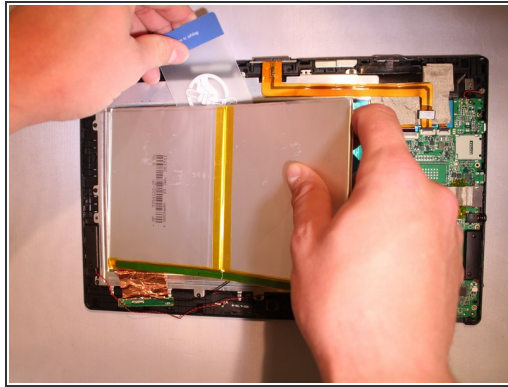
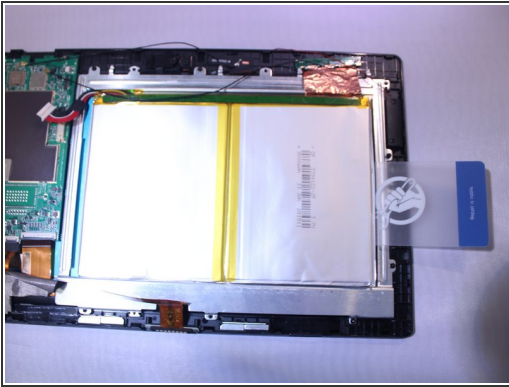
- Using a plastic opening tool, gently pry off the back cover.


Step 4



- Remove the electrical connector that connects to the battery to remove the power to the battery.

Step 5



 Make sure not to bend the battery too excessively as if bent too much, it could rupture a cell within the battery and possibly cause a fire.

- The battery is glued onto the device. To remove it, use a nylon spudger or plastic card to slide underneath the battery and scrape back and forth to remove the glue until the battery is removed from the device.

To reassemble your device, follow these instructions in reverse order.