



# Insignia Flex 11.6 Motherboard Replacement

This guide will provide step by step instructions for replacing the charging port and motherboard.

Written By: Connor Sweeney



# INTRODUCTION

The motherboard replacement also replaces the charging port because they come as 1 component.




## TOOLS:

- [Plastic Cards](#) (1)
  - [Philips Head Screwdriver: Size J1](#) (1)
  - [iFixit Opening Tools](#) (1)
  - [Tweezers](#) (1)
-

## Step 1 — Power Removal




 Before working on the device, make sure the device is off and not plugged into any power source for safety reasons. Failure to comply could result in injury.

- Place the device on a firm surface with the device screen facing down.

## Step 2

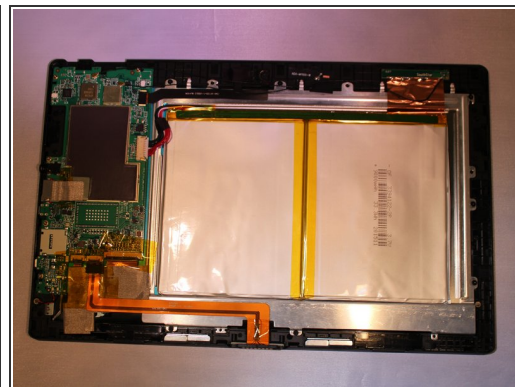
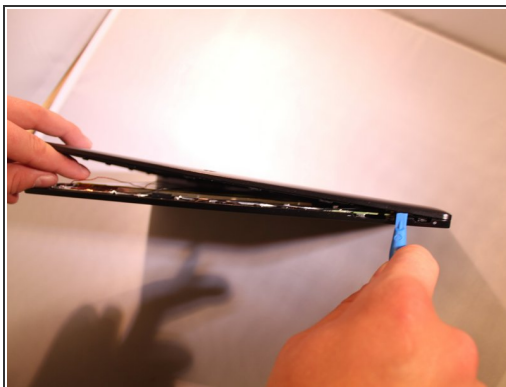


- Remove 2, 6.1 mm Phillips J000 screws from the back of the device.

 If any screws are stripped, refer to the ifixit guide for how to remove a stripped screw. [How to Remove a Stripped Screw](#)

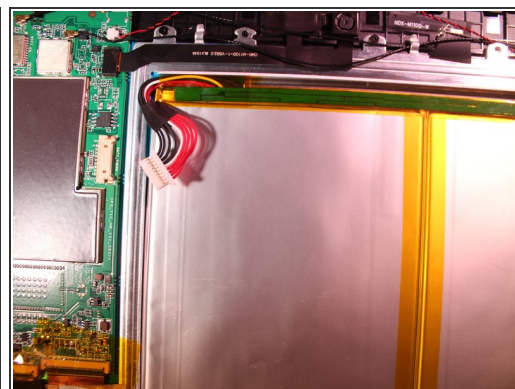
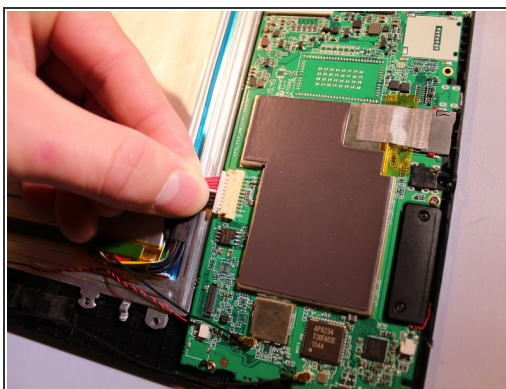


## Step 3



- Using a plastic tool and the plastic card, gently pry off the back cover.

## Step 4



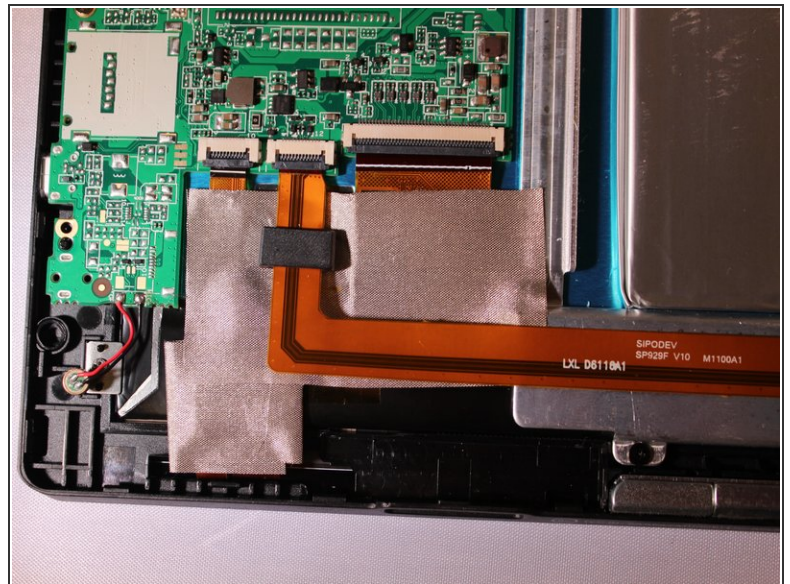
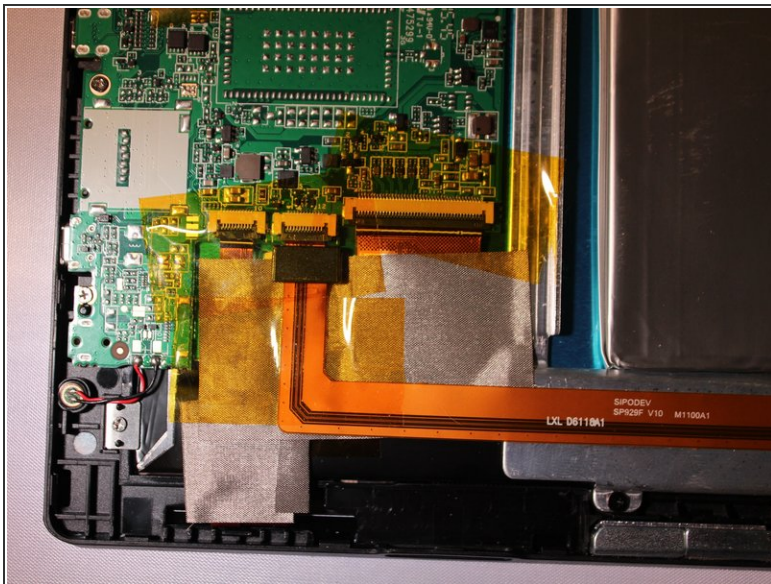
- Using tweezers, remove the electrical connector that connects to the battery to remove the power to the battery.

## Step 5 — Motherboard



- Unplug the 2 speaker's connection from the motherboard.

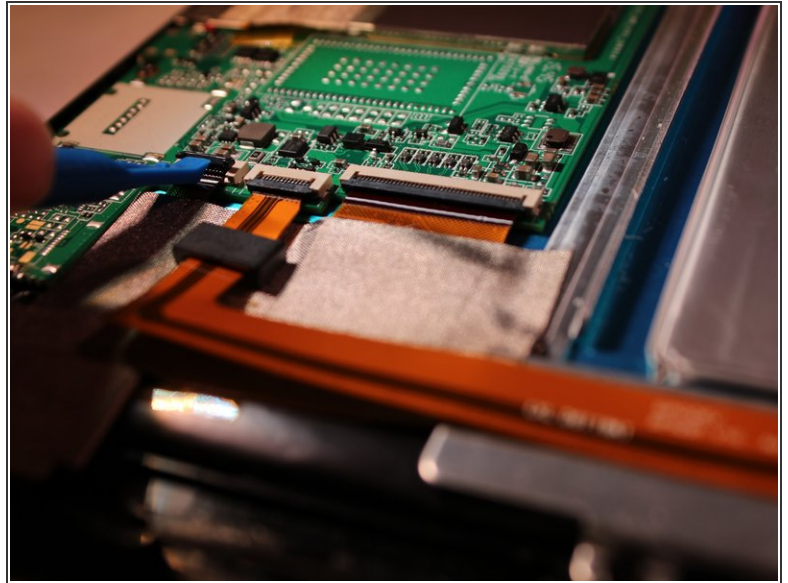
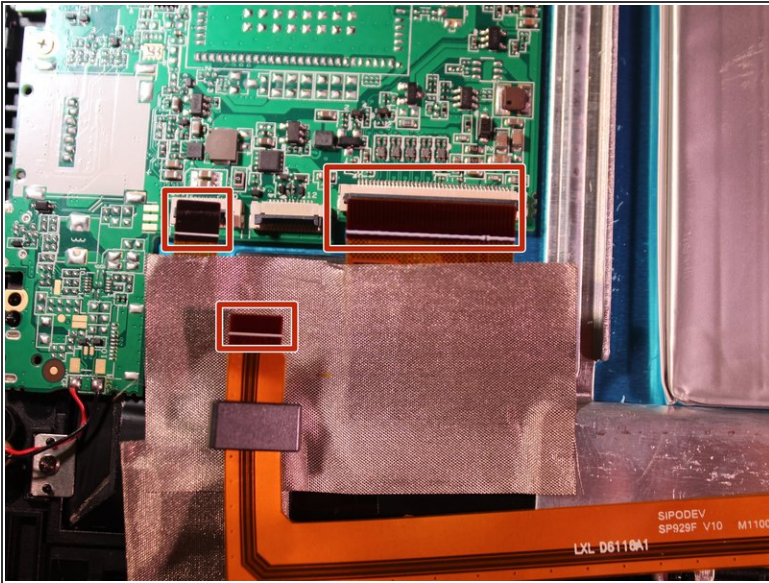
## Step 6



- Peel the yellow tape off from on top of the electrical connectors.

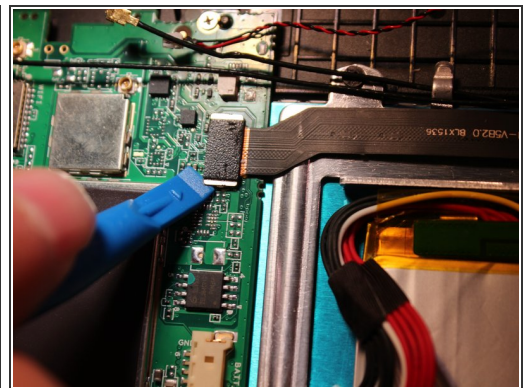
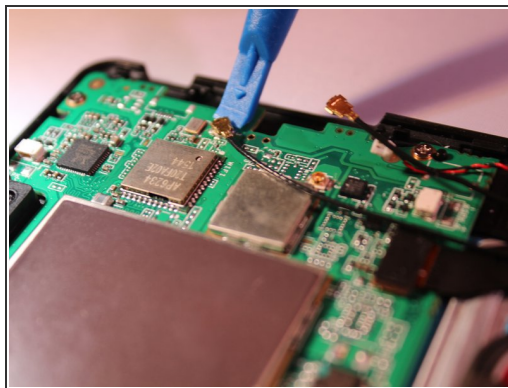
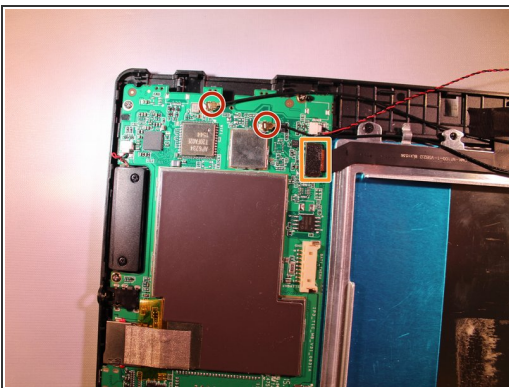


## Step 7



- Flip up the black cover pieces to expose the 3 electrical connectors.
- Remove 3 electrical connectors by gently pulling back on them with some tweezers.

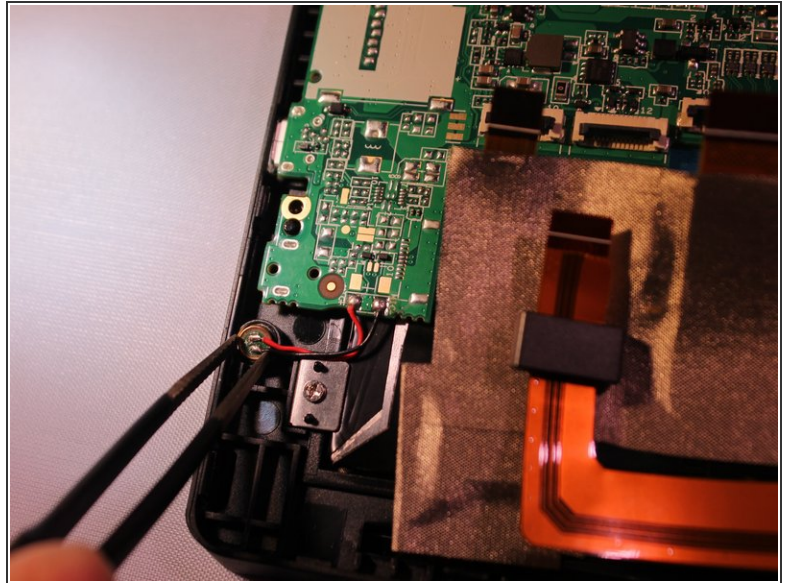
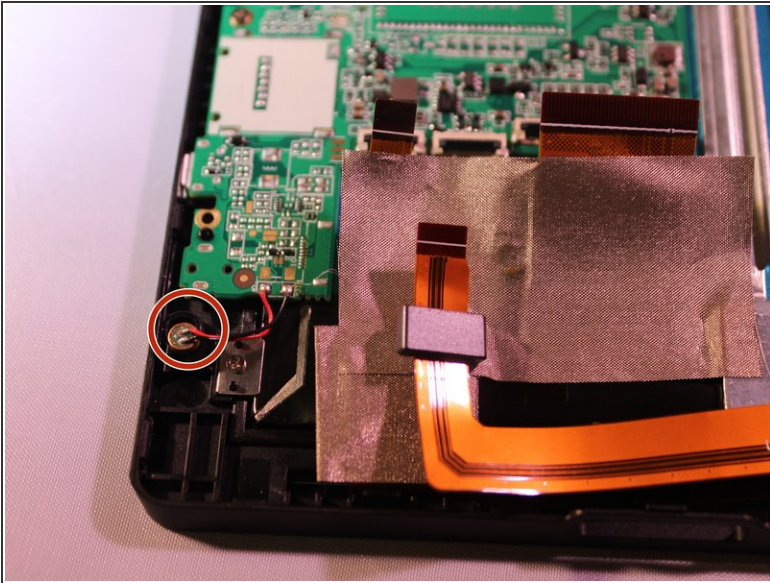
## Step 8



- Unplug the 2 black ground wires from the motherboard by gently prying on them until they unhook from the motherboard.
- Remove the black camera connector by gently prying on it until it unhooks.

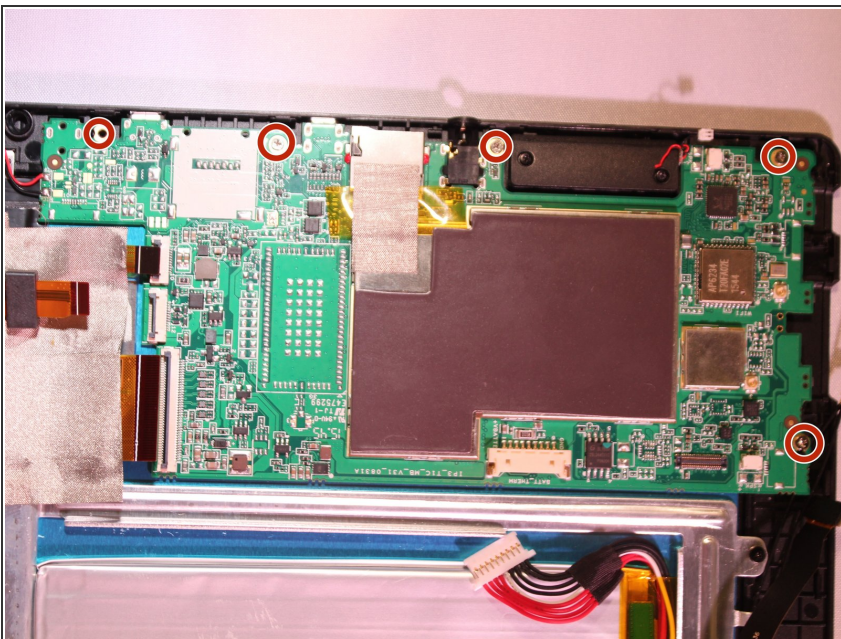


## Step 9



- Using tweezers, remove the microphone from the the plastic cover.

## Step 10



- Remove 5 - 3.4 mm Phillips J000 screws from the motherboard.

ⓘ Motherboard pops out.

To reassemble your device, follow these instructions in reverse order.