



Insignia Flex 11.6 Screen Replacement

This guide will accomplish replacing the screen on the Insignia Flex 11.6.

Written By: Connor Sweeney



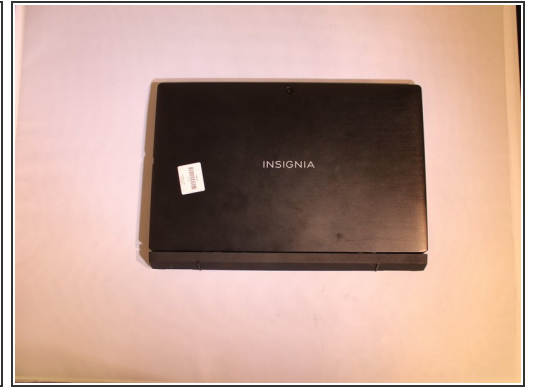
INTRODUCTION


The steps provided will walk you through the necessary replacement for the screen. Complete the prerequisites before performing these tasks.

TOOLS:

- [Tweezers](#) (1)
 - [Plastic Cards](#) (1)
 - [iFixit Opening Tools](#) (1)
 - [JIS Driver Set](#) (1)
-

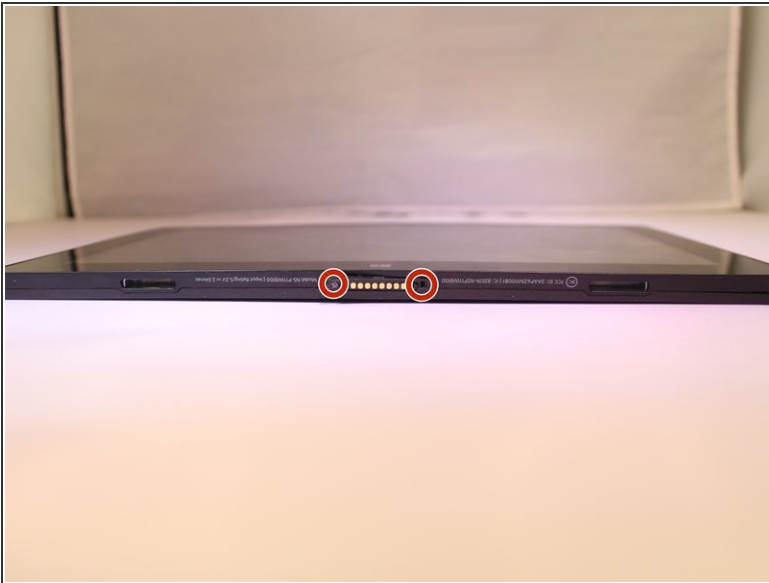
Step 1 — Power Removal




 Before working on the device, make sure the device is off and not plugged into any power source for safety reasons. Failure to comply could result in injury.

- Place the device on a firm surface with the device screen facing down.

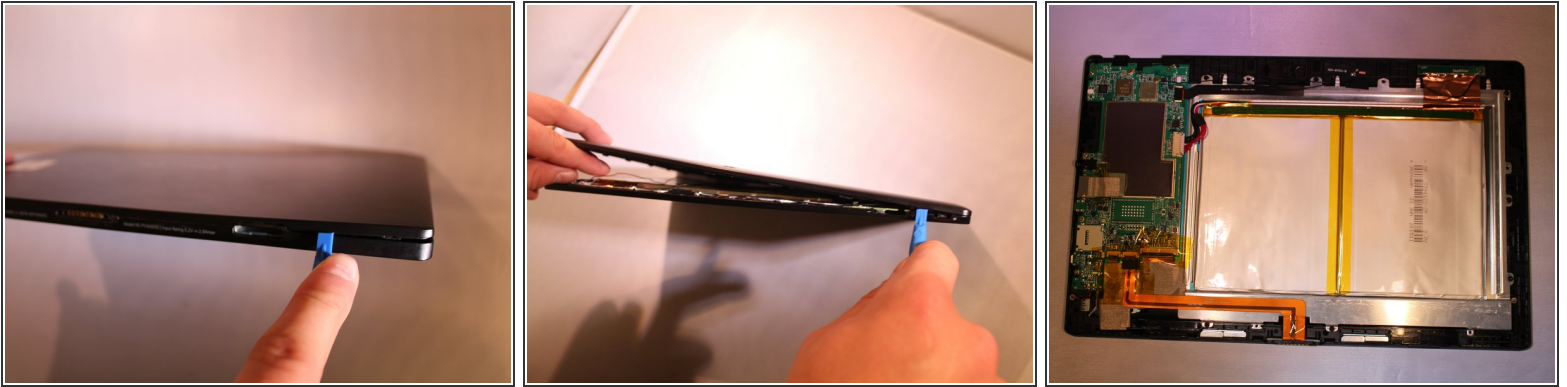
Step 2



- Remove 2, 6.1 mm Phillips J000 screws from the back of the device.

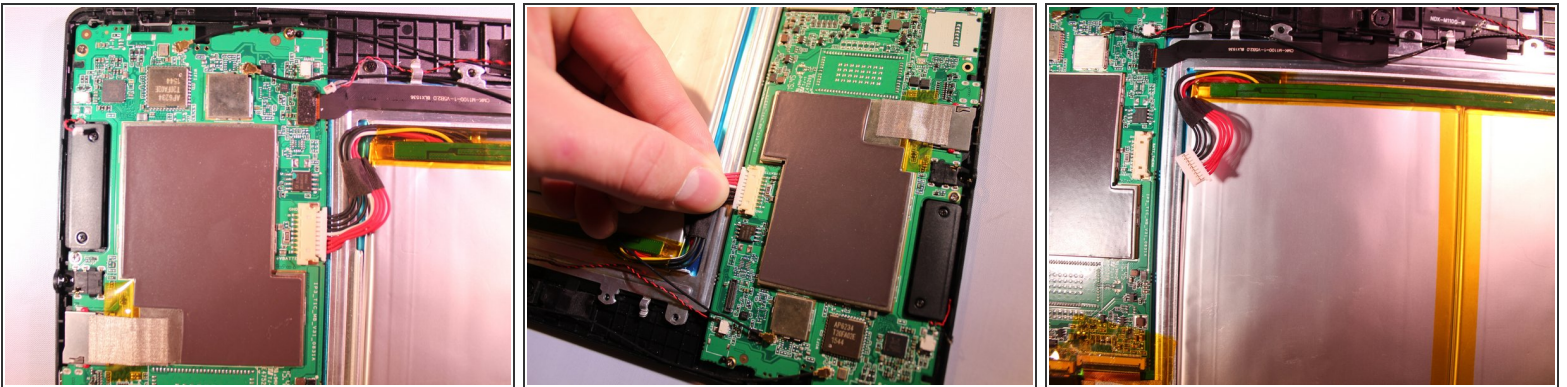
 If any screws are stripped, refer to the ifixit guide for how to remove a stripped screw. [How to Remove a Stripped Screw](#)

Step 3



- Using a plastic tool and the plastic card, gently pry off the back cover.

Step 4



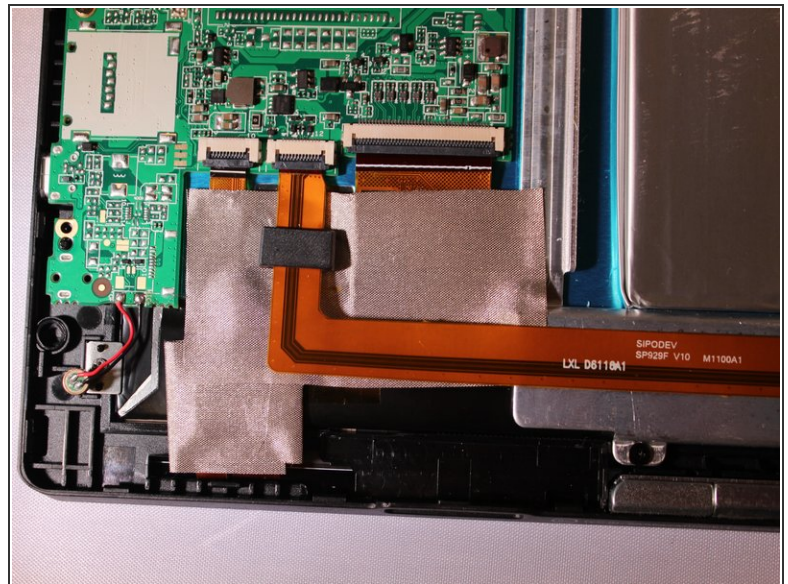
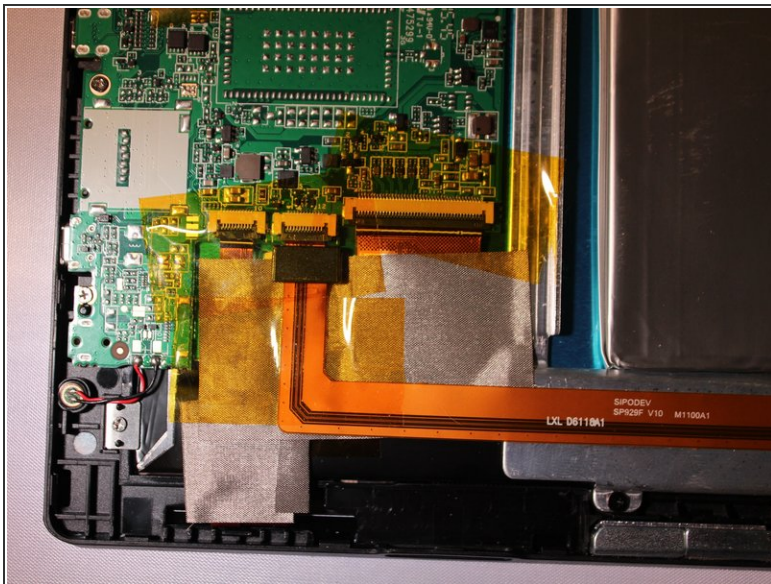
- Using tweezers, remove the electrical connector that connects to the battery to remove the power to the battery.

Step 5 — Motherboard



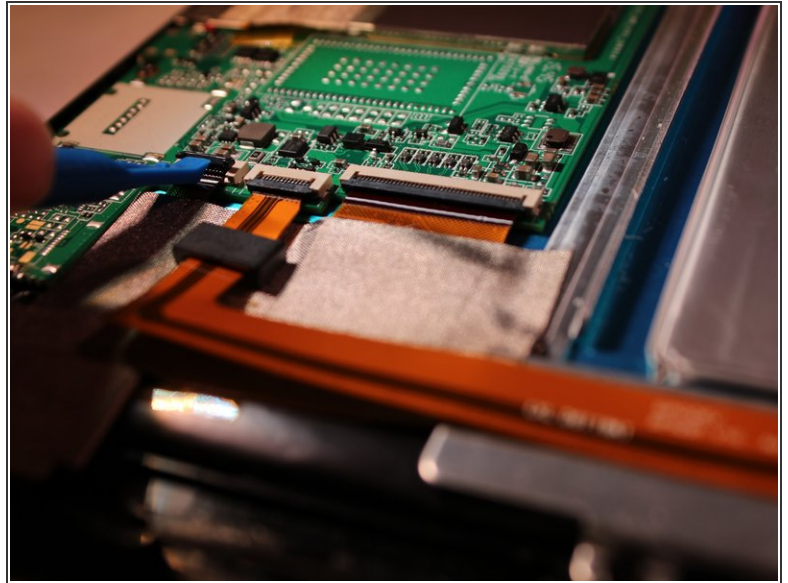
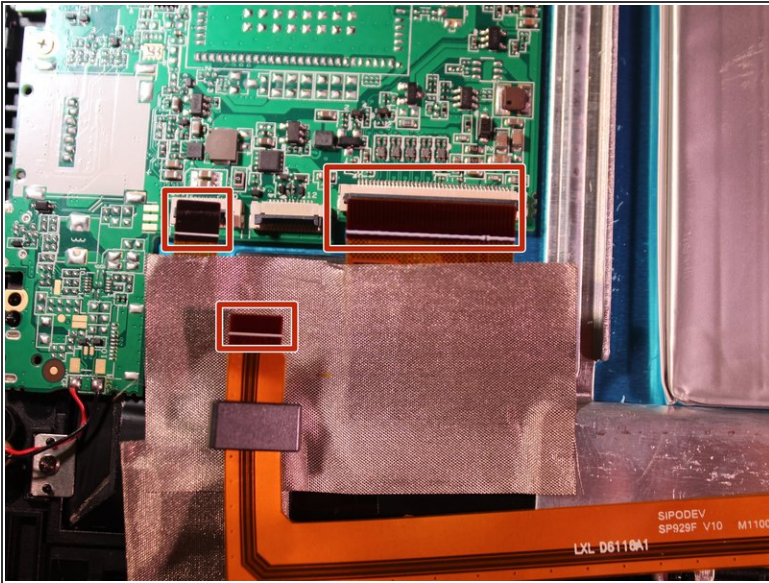
- Unplug the 2 speaker's connection from the motherboard.

Step 6



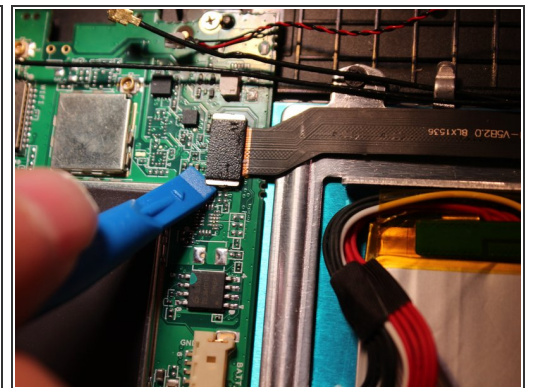
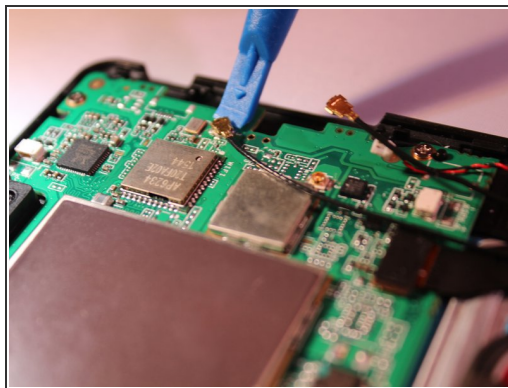
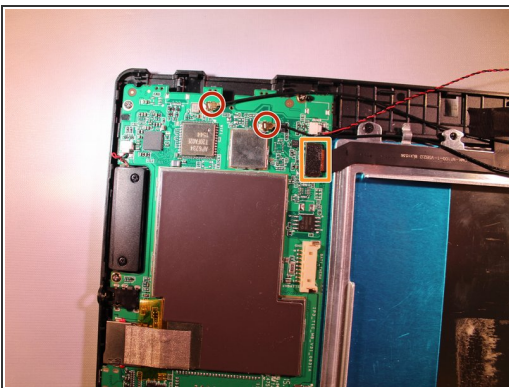
- Peel the yellow tape off from on top of the electrical connectors.

Step 7



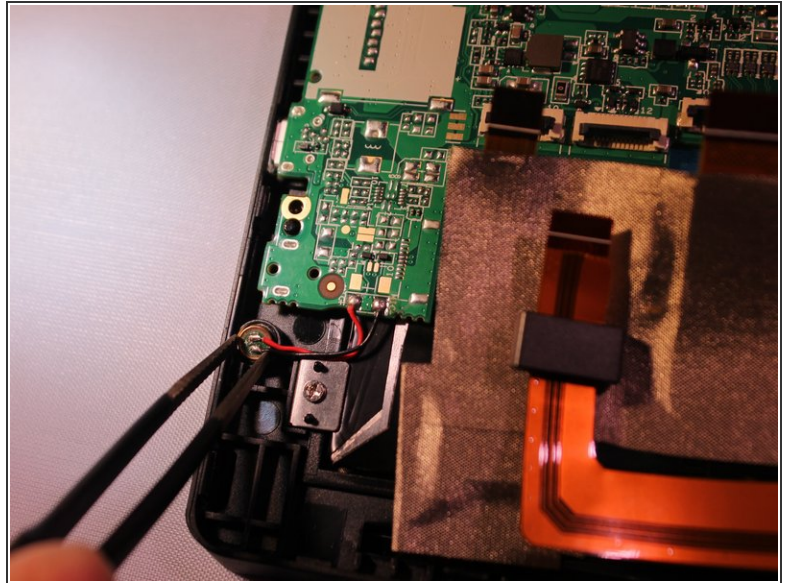
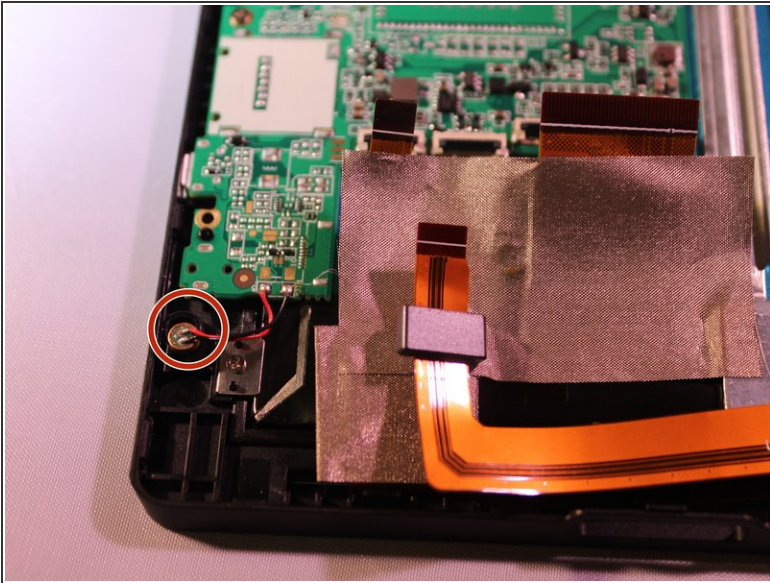
- Flip up the black cover pieces to expose the 3 electrical connectors.
- Remove 3 electrical connectors by gently pulling back on them with some tweezers.

Step 8



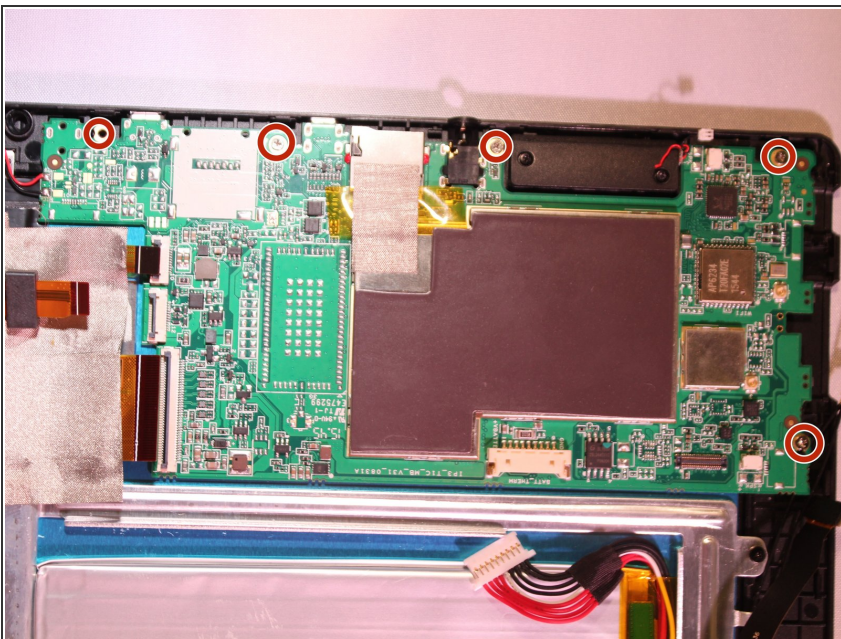
- Unplug the 2 black ground wires from the motherboard by gently prying on them until they unhook from the motherboard.
- Remove the black camera connector by gently prying on it until it unhooks.

Step 9



- Using tweezers, remove the microphone from the the plastic cover.

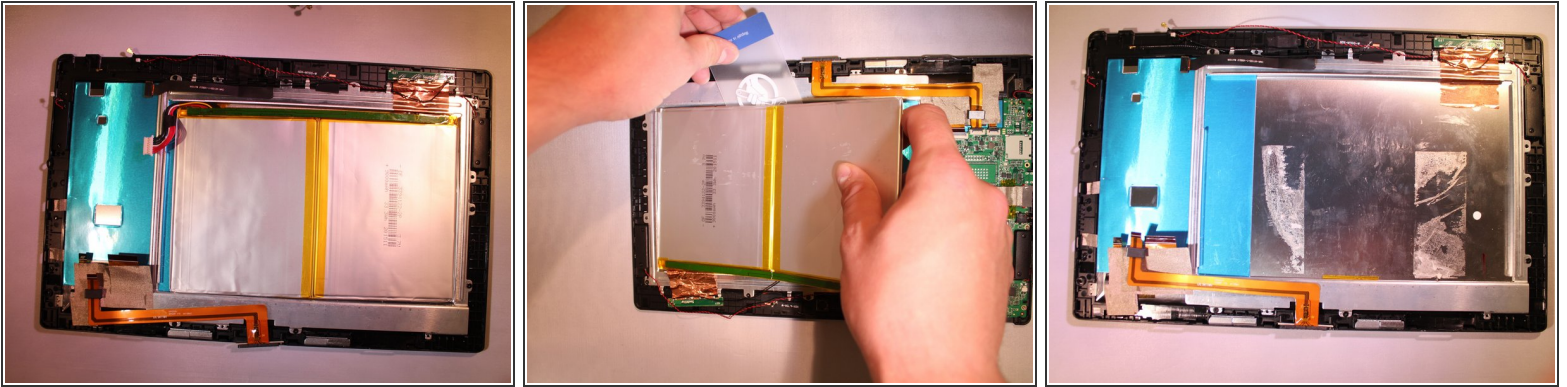
Step 10



- Remove 5 - 3.4 mm Phillips J000 screws from the motherboard.

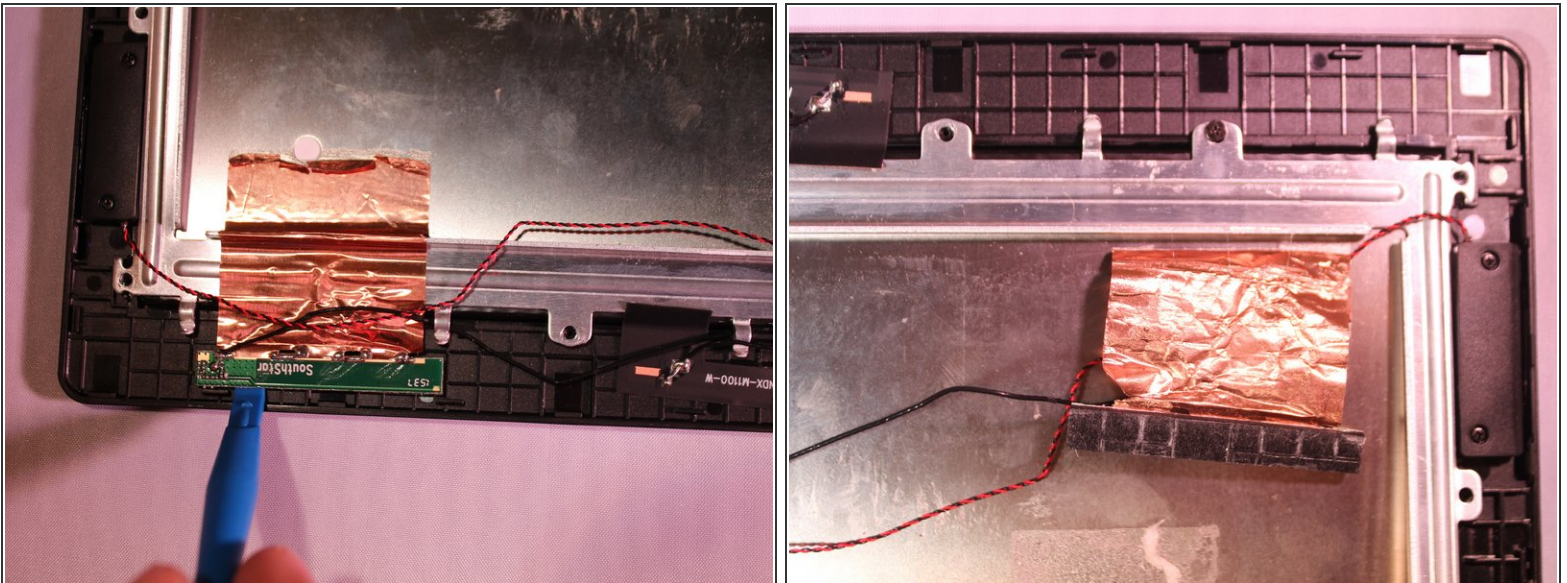
ⓘ Motherboard pops out.

Step 11 — Screen



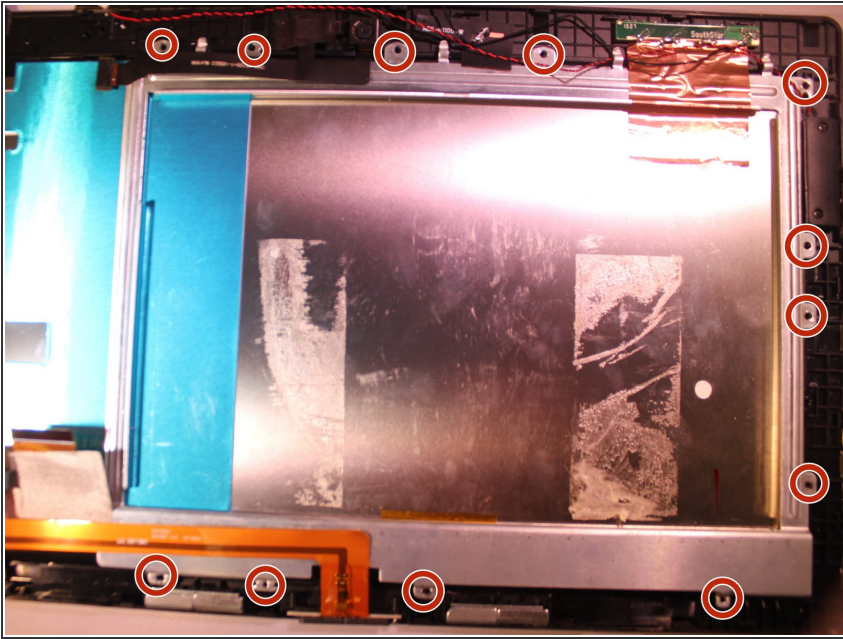
- Remove battery by prying off with card.

Step 12



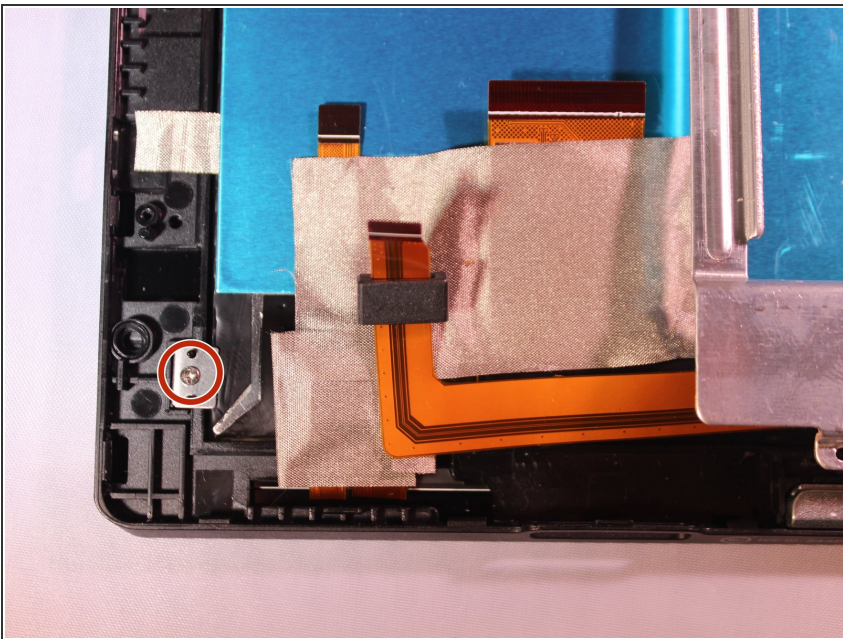
- Peel back the copper color electrical connector with blue opening tool.

Step 13



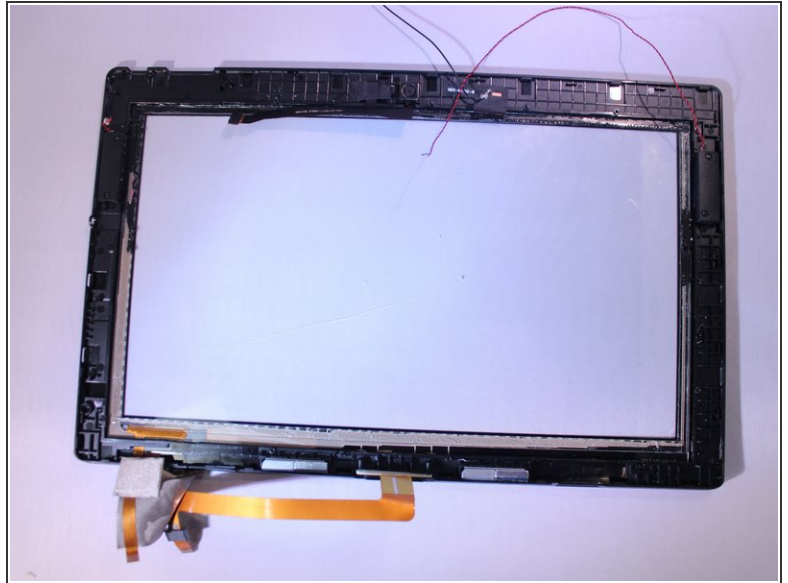
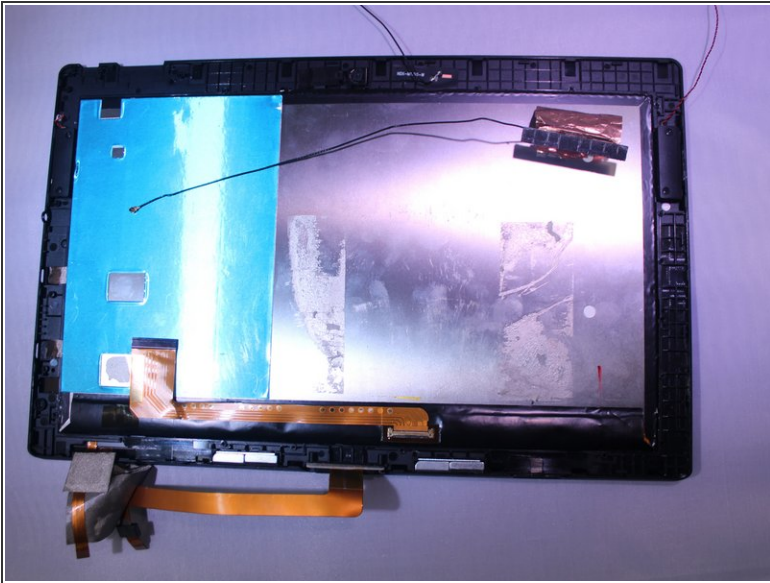
- Remove 12 - 4.15mm J000 Phillips screws from the metal bracket.
- Bracket will then come off.

Step 14



- Remove 1 - 3.4 mm J000 Phillips screw from metal plate bracket.

Step 15



- Remove screen from case by prying with a card.

To reassemble your device, follow these instructions in reverse order.