



# Insignia Flex 11.6 Speakers Replacement

This guide will accomplish replacing the speakers in the Insignia Flex 11.6

Written By: Connor Sweeney



## INTRODUCTION

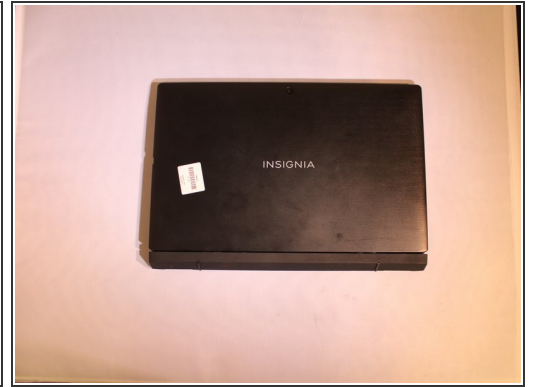
This guide will provide you with step by step instructions on how to replace the speakers inside the device. This replacement should only be required for faulty speakers.


---

### TOOLS:

- [Plastic Cards](#) (1)
  - [Philips Head Screwdriver: Size J1](#) (1)
  - [iFixit Opening Tools](#) (1)
  - [Tweezers](#) (1)
-

## Step 1 — Power Removal




 Before working on the device, make sure the device is off and not plugged into any power source for safety reasons. Failure to comply could result in injury.

- Place the device on a firm surface with the device screen facing down.

## Step 2

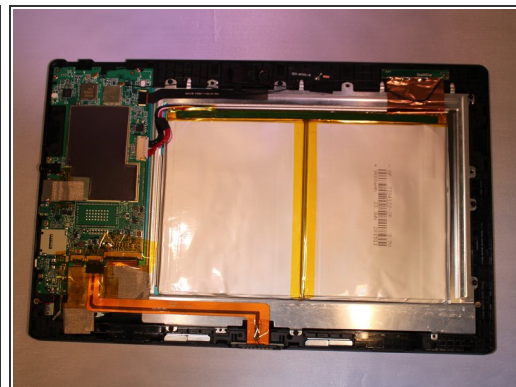
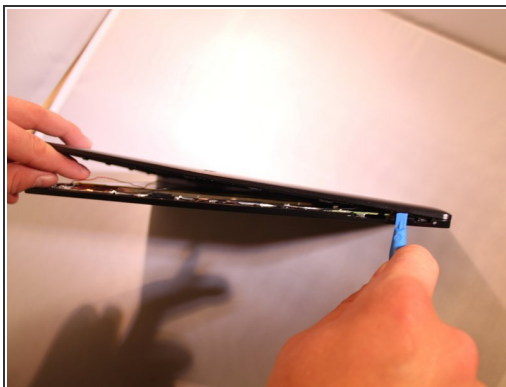


- Remove 2, 6.1 mm Phillips J000 screws from the back of the device.

 If any screws are stripped, refer to the ifixit guide for how to remove a stripped screw. [How to Remove a Stripped Screw](#)

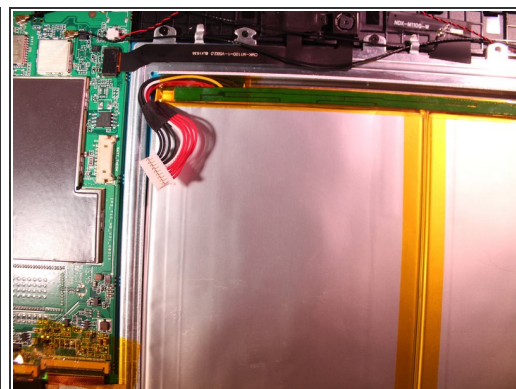
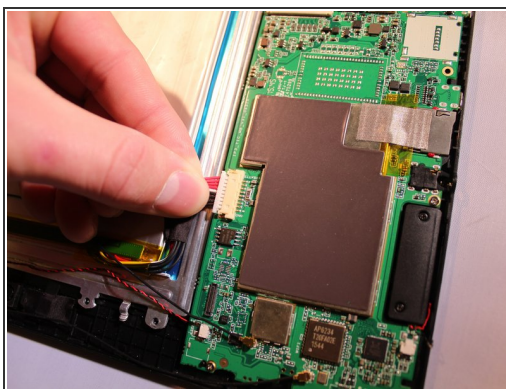


### Step 3



- Using a plastic tool and the plastic card, gently pry off the back cover.

### Step 4



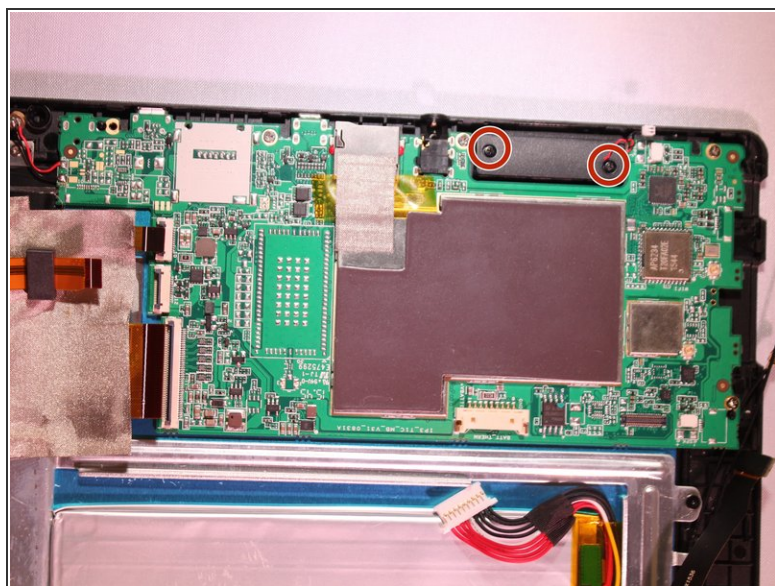
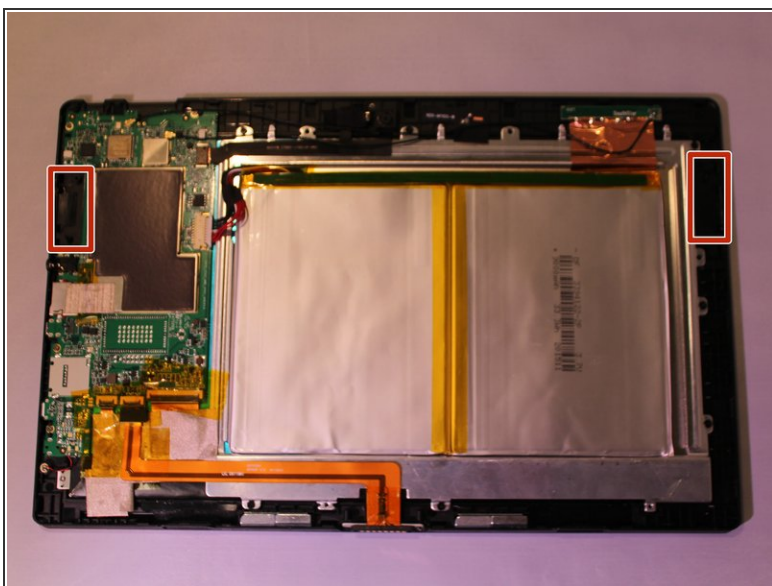
- Using tweezers, remove the electrical connector that connects to the battery to remove the power to the battery.

## Step 5 — Speakers



- Remove 2 electrical connectors that connects to the speaker using flat tweezers.

## Step 6



- Remove 2 - 6 mm J000 Phillips screws from each of the speakers.

**i** Speakers will pop out at this point.

To reassemble your device, follow these instructions in reverse order.