



Insignia Flex 8 NS-P08A7100 Battery Replacement

This guide helps you to replace a faulty battery

Written By: Lavina Pillai

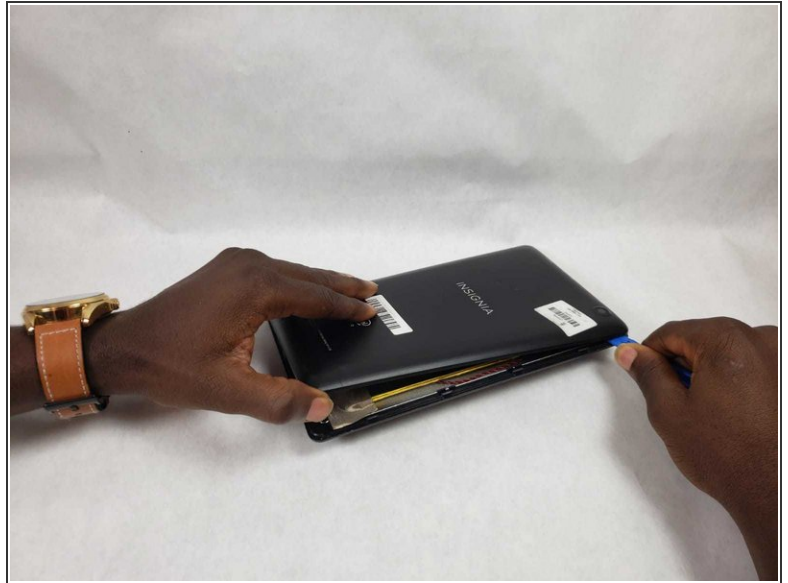
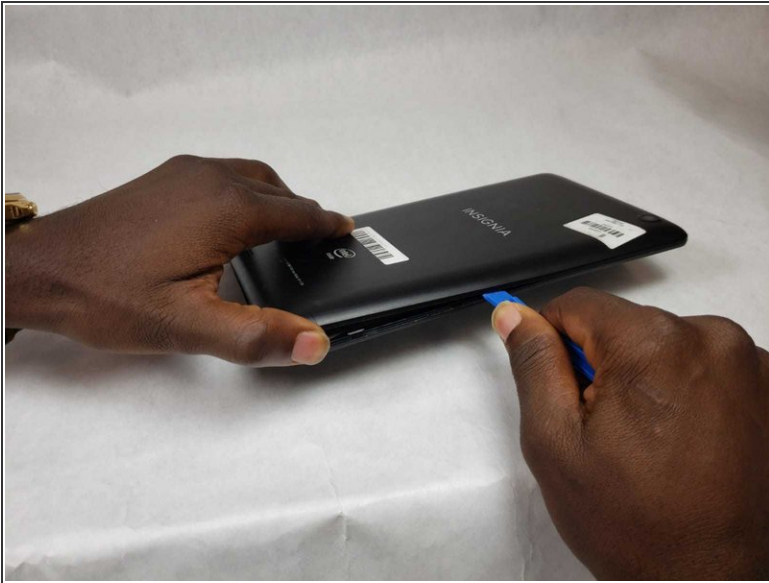




TOOLS:

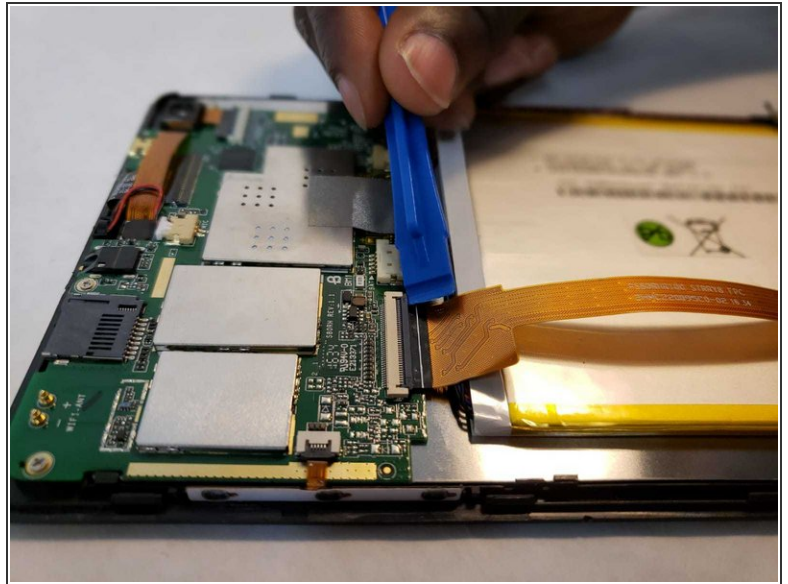
- [iFixit Opening Tools](#) (1)
-

Step 1 — Battery



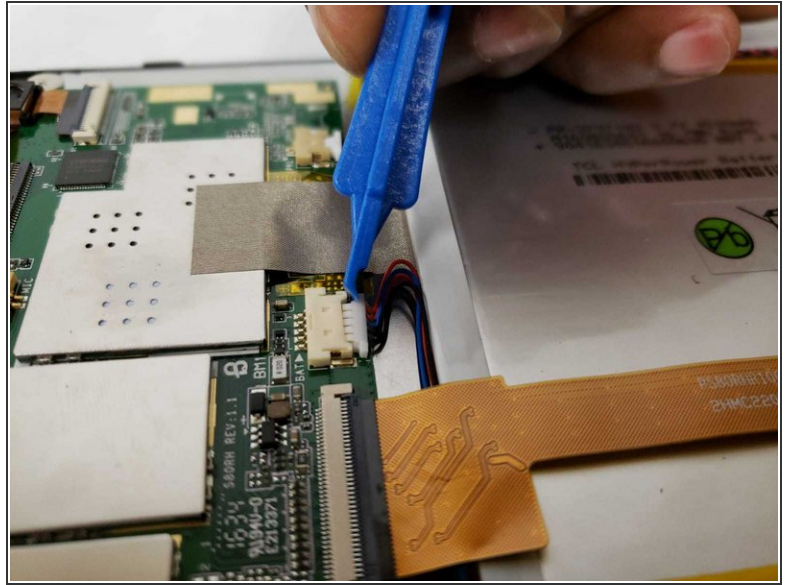
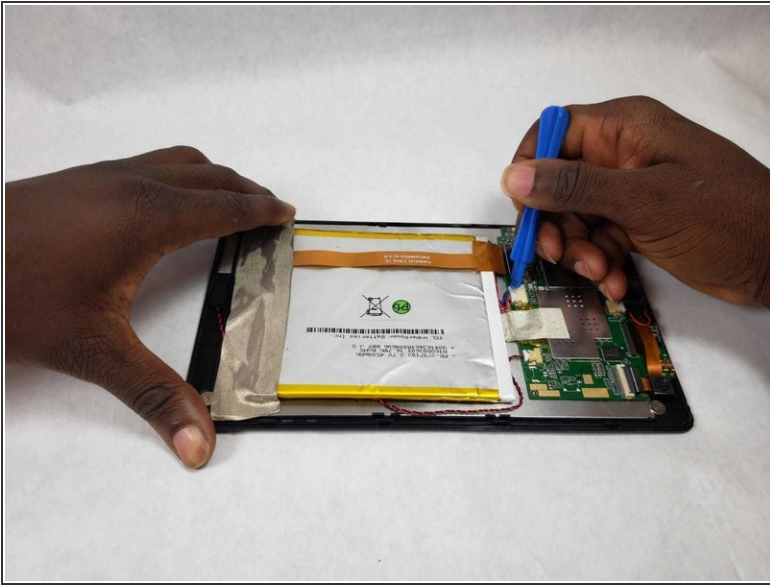
- Begin by using the opening tool to pry open the back cover. Continue around the edge until the back cover pops off.

Step 2



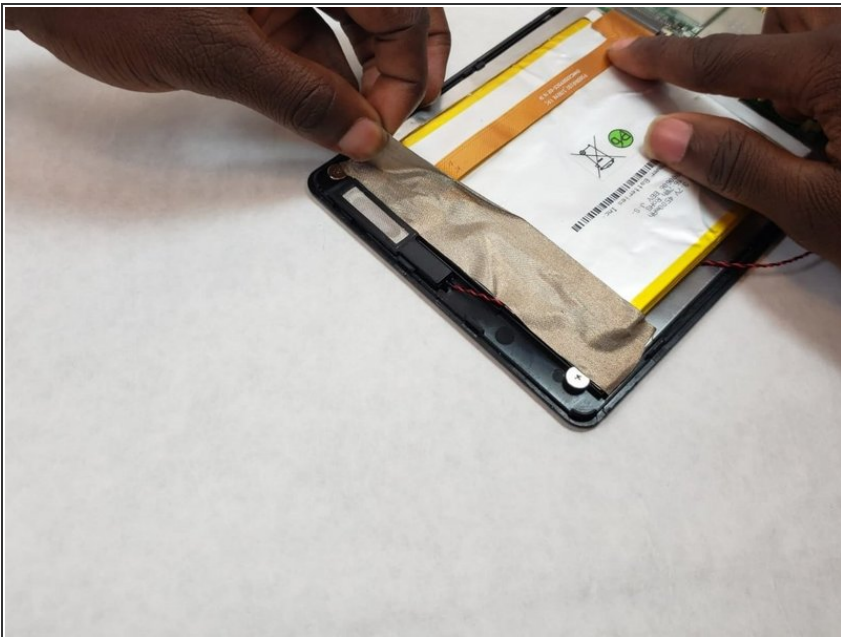
- Use the opening tool to flip the LCD flex circuit plug upwards. The flex circuit should now be loose. Remove flex circuit by pulling outwards.

Step 3



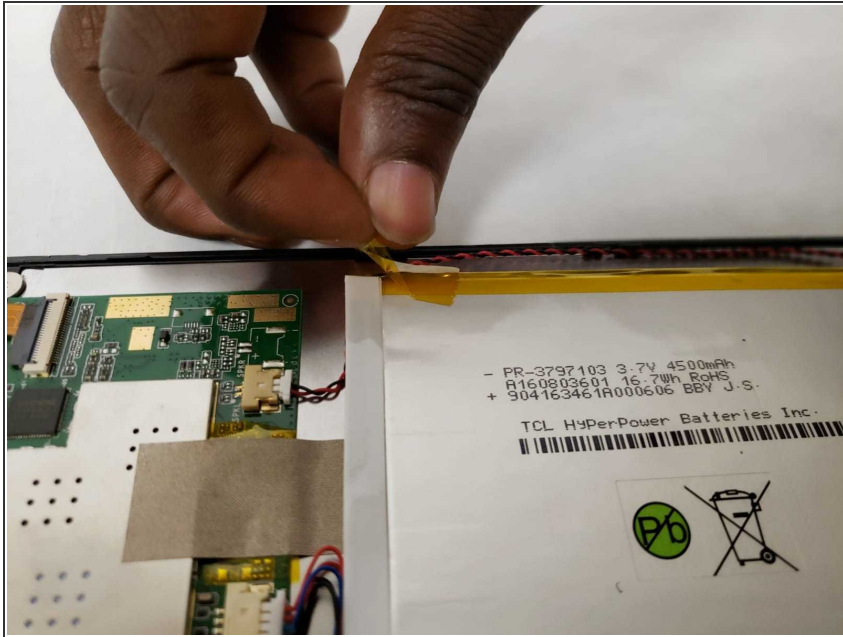
- Use the opening tool to remove the battery cable from the circuit board.

Step 4



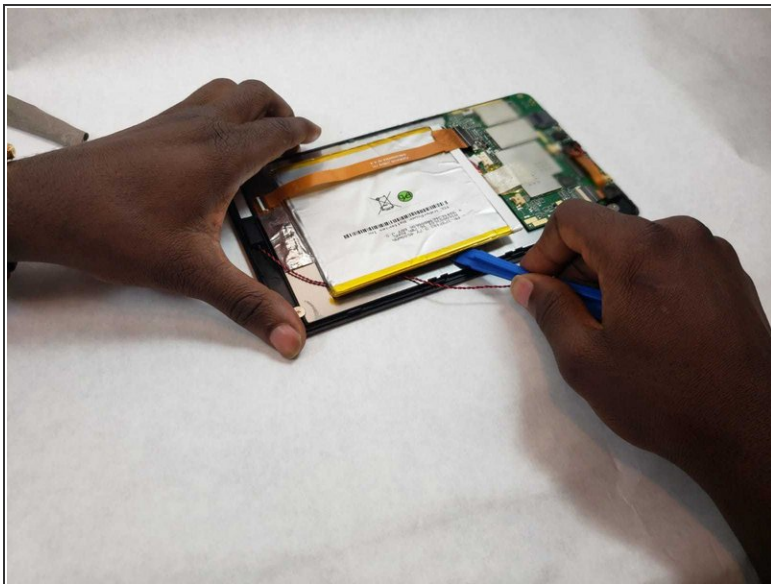
- Remove the adhesive tape from the bottom of the battery.

Step 5



- Remove plastic adhesive tape from the side of the battery.

Step 6



- Pry the battery from the back of the LCD screen using the opening tool. Due to the strong adhesive between the battery and screen, this may take some time.

To reassemble your device, follow these instructions in reverse order.

This document was generated on 2019-09-21 06:18:43 AM (MST).

