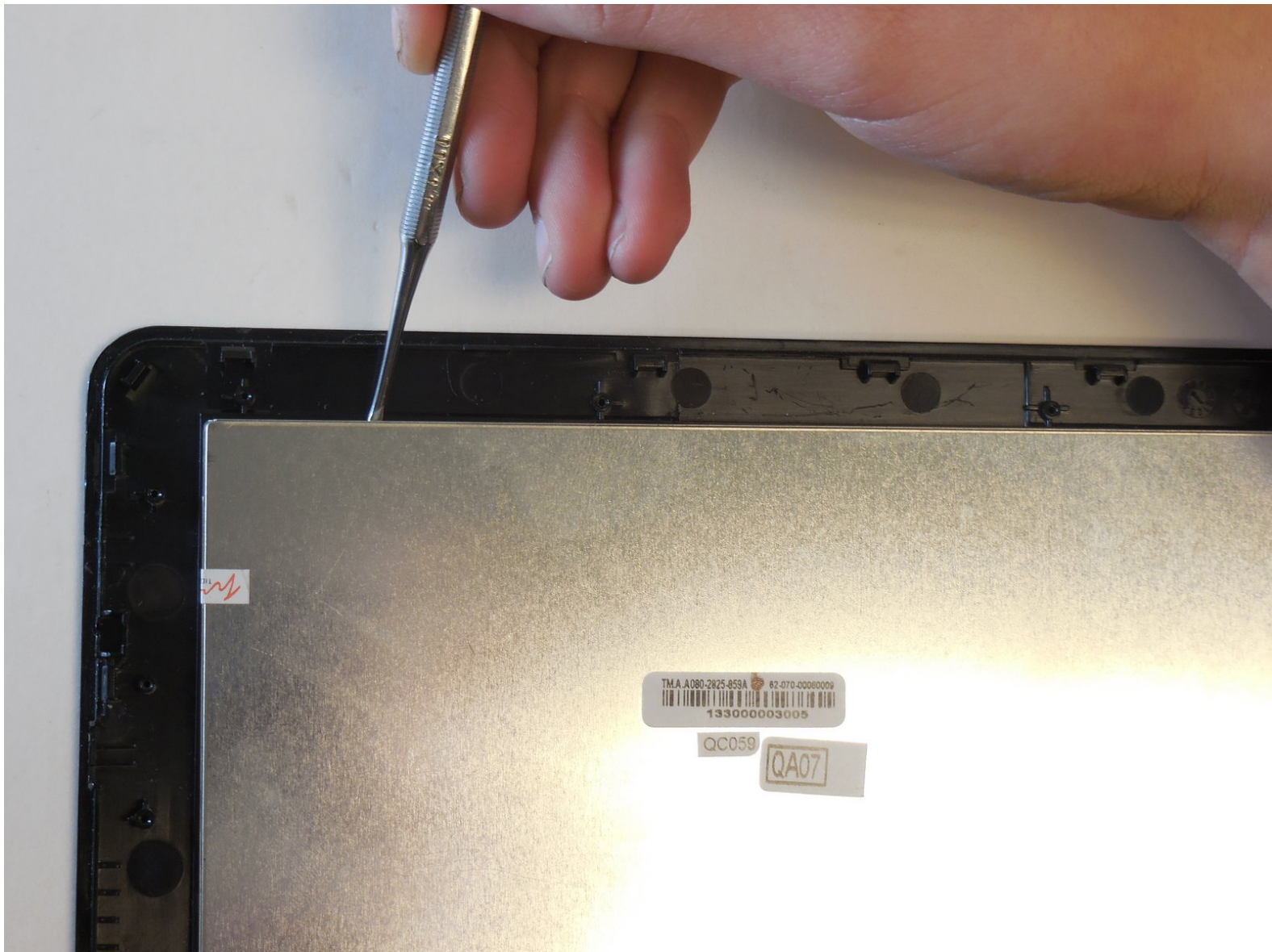




Insignia Flex 8 Screen Replacement

This guide will enable you to replace a broken on your Flex 8 tablet.

Written By: Tyler Tyrrell



INTRODUCTION

This process is simple once the tablet is disassembled and requires only requires a prying tool.



TOOLS:

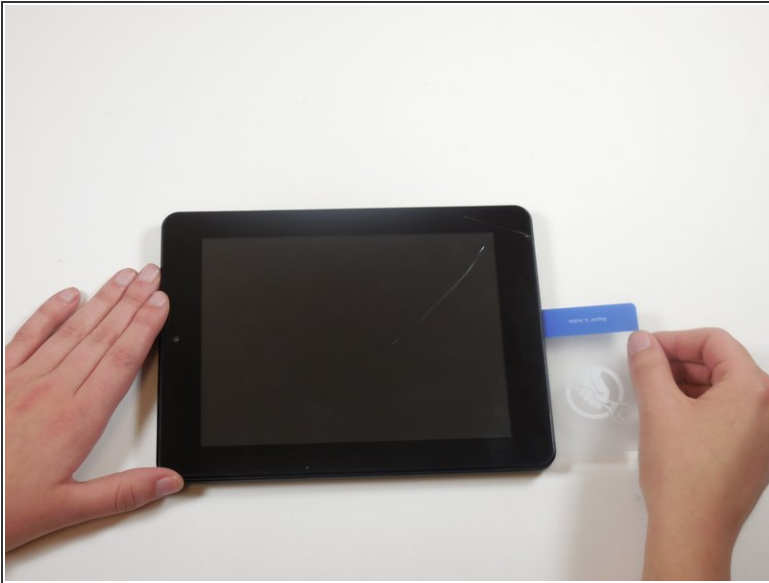
- [Phillips #00 Screwdriver](#) (1)
 - [Plastic Cards](#) (1)
-

Step 1 — Circuit Board



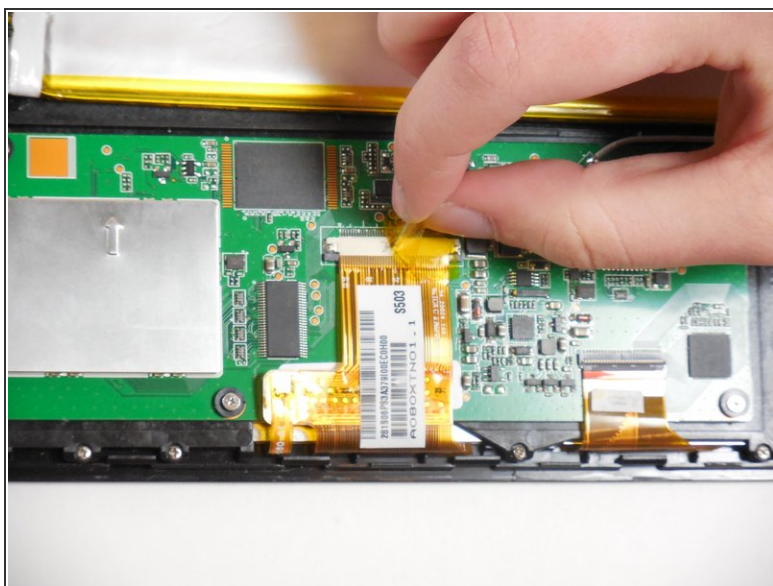
- ⚠ Turn off the power to your tablet to avoid injury.
- ℹ Position the tablet so that the screen is face down and the power button is located in the upper left hand corner.
- Hold down the power button for five seconds until the tablet powers down.

Step 2



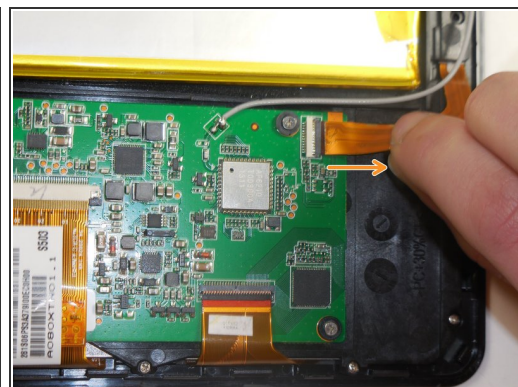
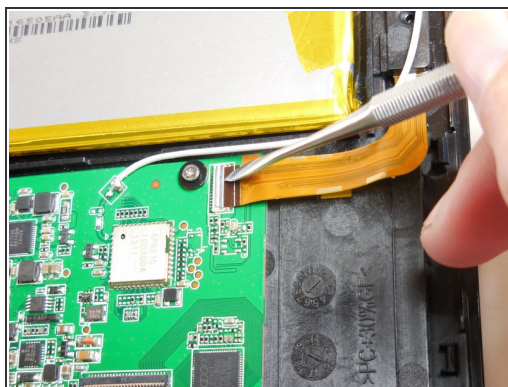
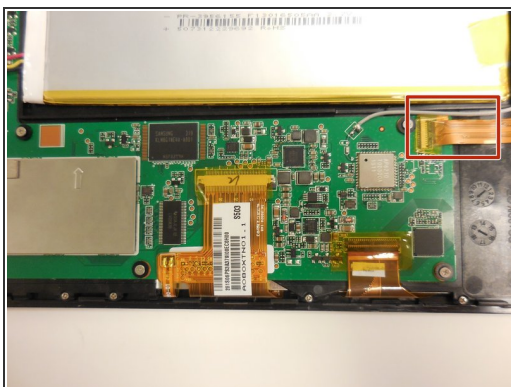
- Remove the back casing from the screen by sliding a credit card or a similarly thin but firm object in between the casing and the screen.
- ⓘ You may need to use a spudger to initially create separation between the screen and the casing.
- ⓘ Run this object around the perimeter of the tablet until there is separation between the casing and the screen.
- Remove the back casing and set aside.

Step 3



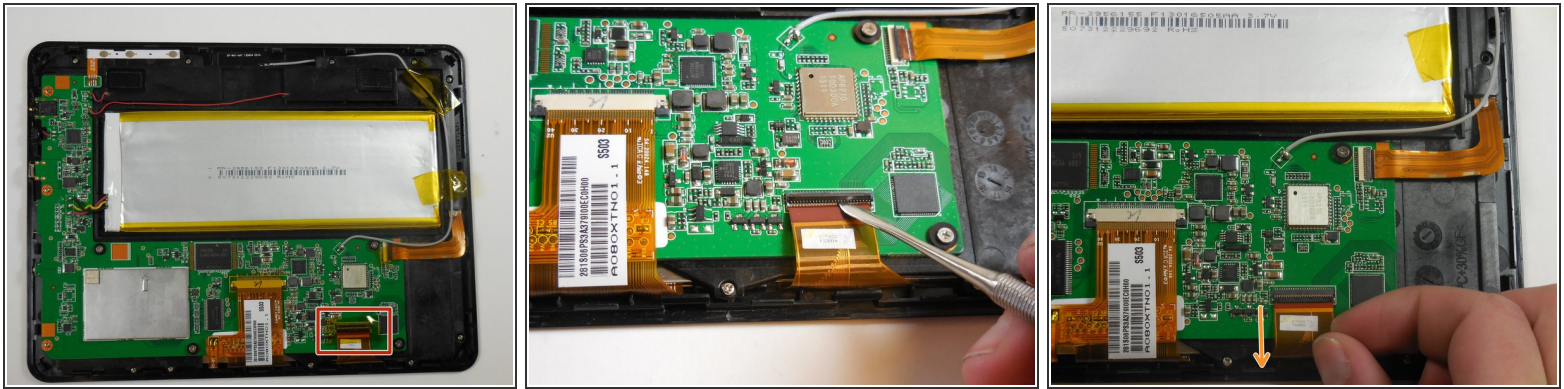
- Peel tape off of ribbon connectors. Starting at the power button, work clockwise around the tablet.

Step 4



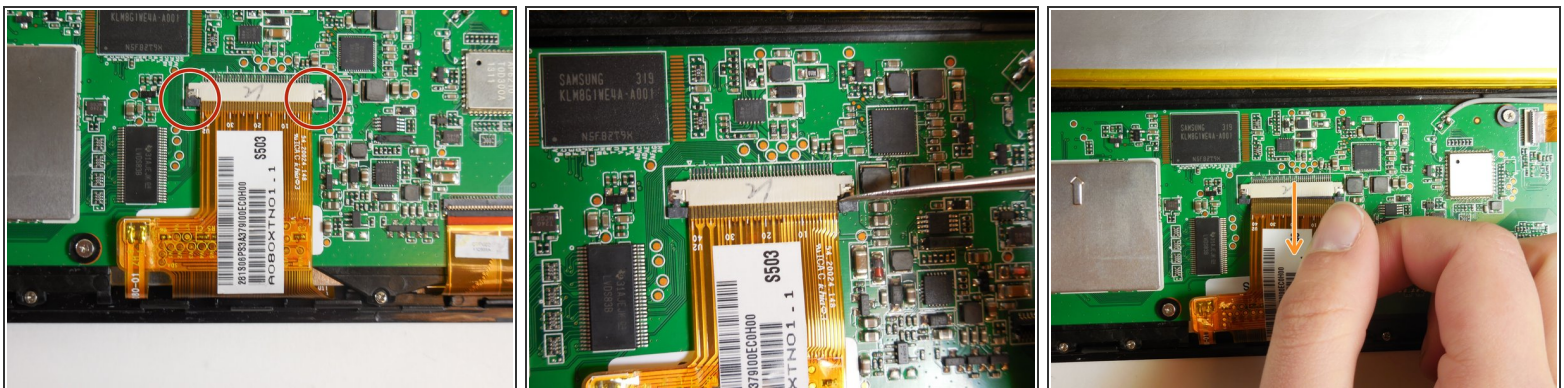
- To remove the camera ribbon cable, lift the flap using a spudger.
- Pull the ribbon directly back to release it.

Step 5



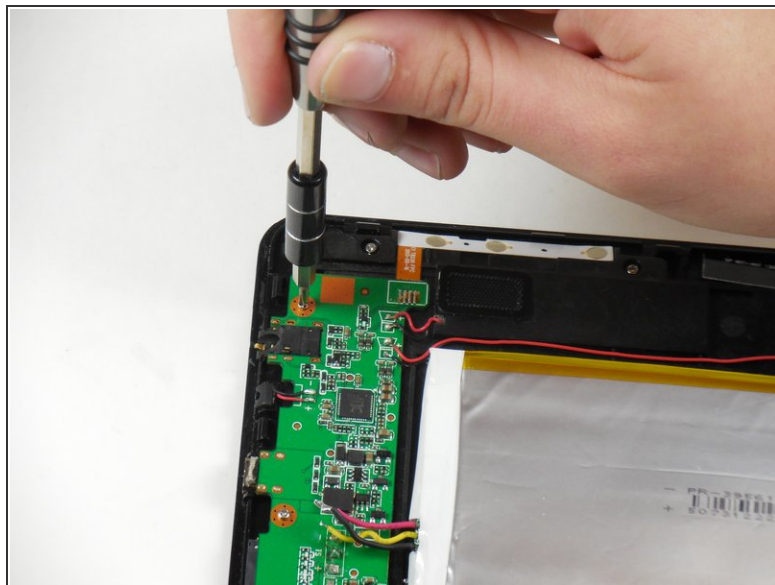
- Remove the second ribbon cable by prying up the black flap using a spudger.
- Pull the ribbon cable horizontally directly away from the battery.

Step 6



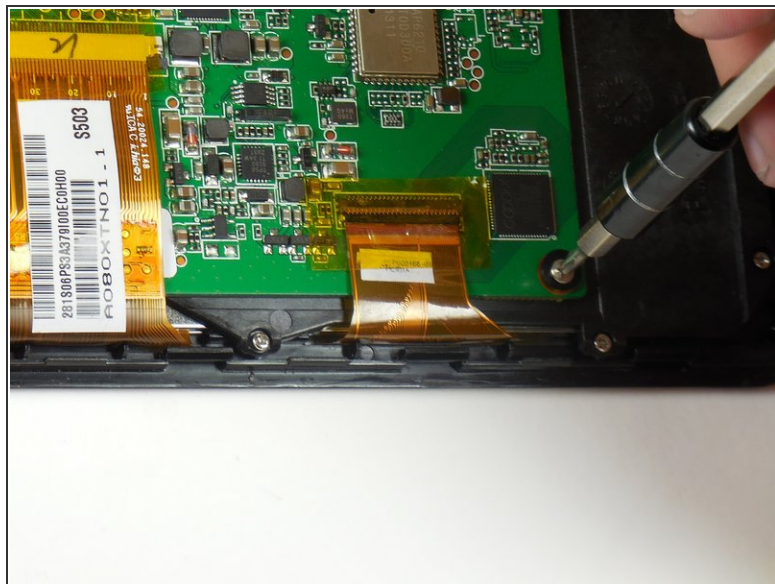
- Remove the final ribbon cable by pulling back the two black tabs on either side of the ribbon cable.
- Pull the ribbon horizontally directly away from the battery.

Step 7



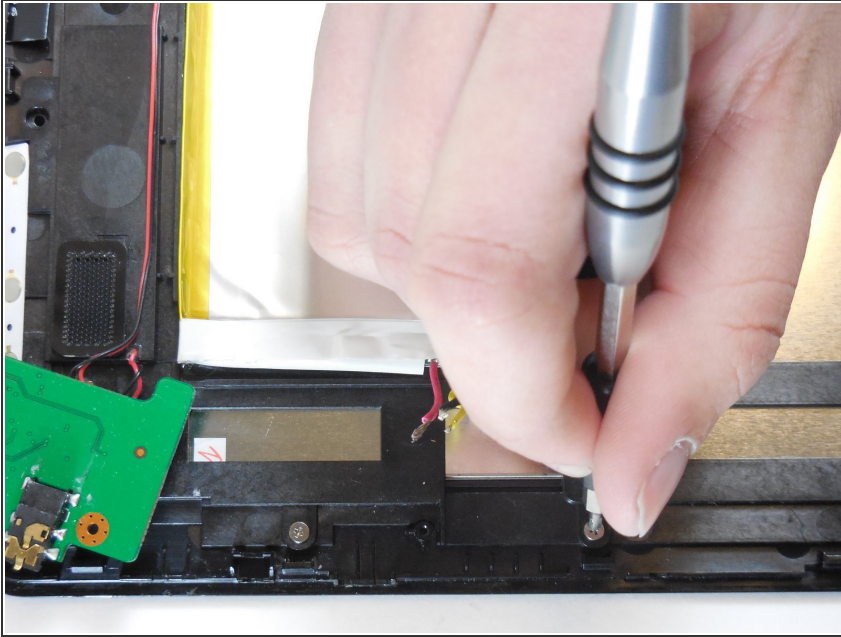
- Unscrew the thirteen 4.75mm screws around the perimeter of the tablet using a PH 00 screwdriver.

Step 8



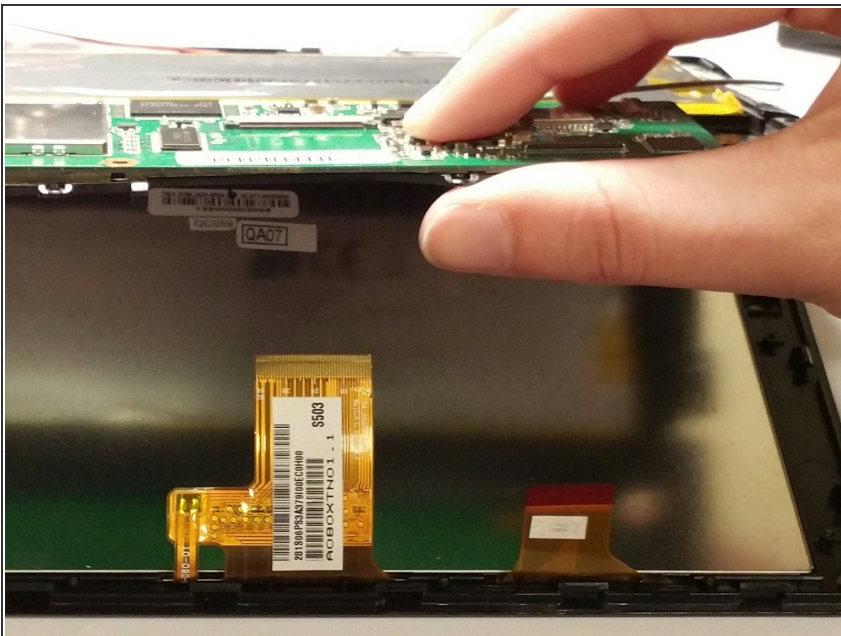
- Unscrew the four 3.75mm screws and plastic washers using a PH 00 screwdriver.
- Lift up the circuit board.

Step 9



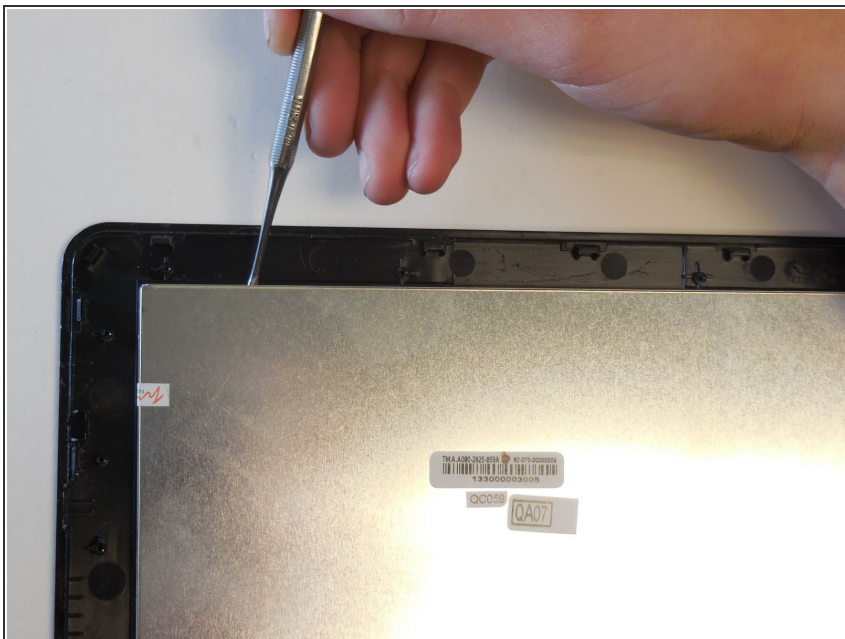
- Unscrew the final two screws that were underneath the circuit board.
- ⓘ These screws are near the charging port and USB adapter.
- ⓘ These screws are also 3.75mm and can be interchanged with the second set of screws only.

Step 10



- Lift the circuit board and black internal mounting piece away from the screen.
- Set the circuit board aside.
- ⚠ Be careful of the soldered antenna as you separate the pieces.
- ⚠ Be careful of the soldered ribbon that is connected to the power source. This ribbon is fragile.

Step 11 — Screen



- Slide the spudger in between the silver screen and the black border

Step 12



- Pry up the LCD display and lift it away from the plastic screen.

To reassemble your device, follow these instructions in reverse order.