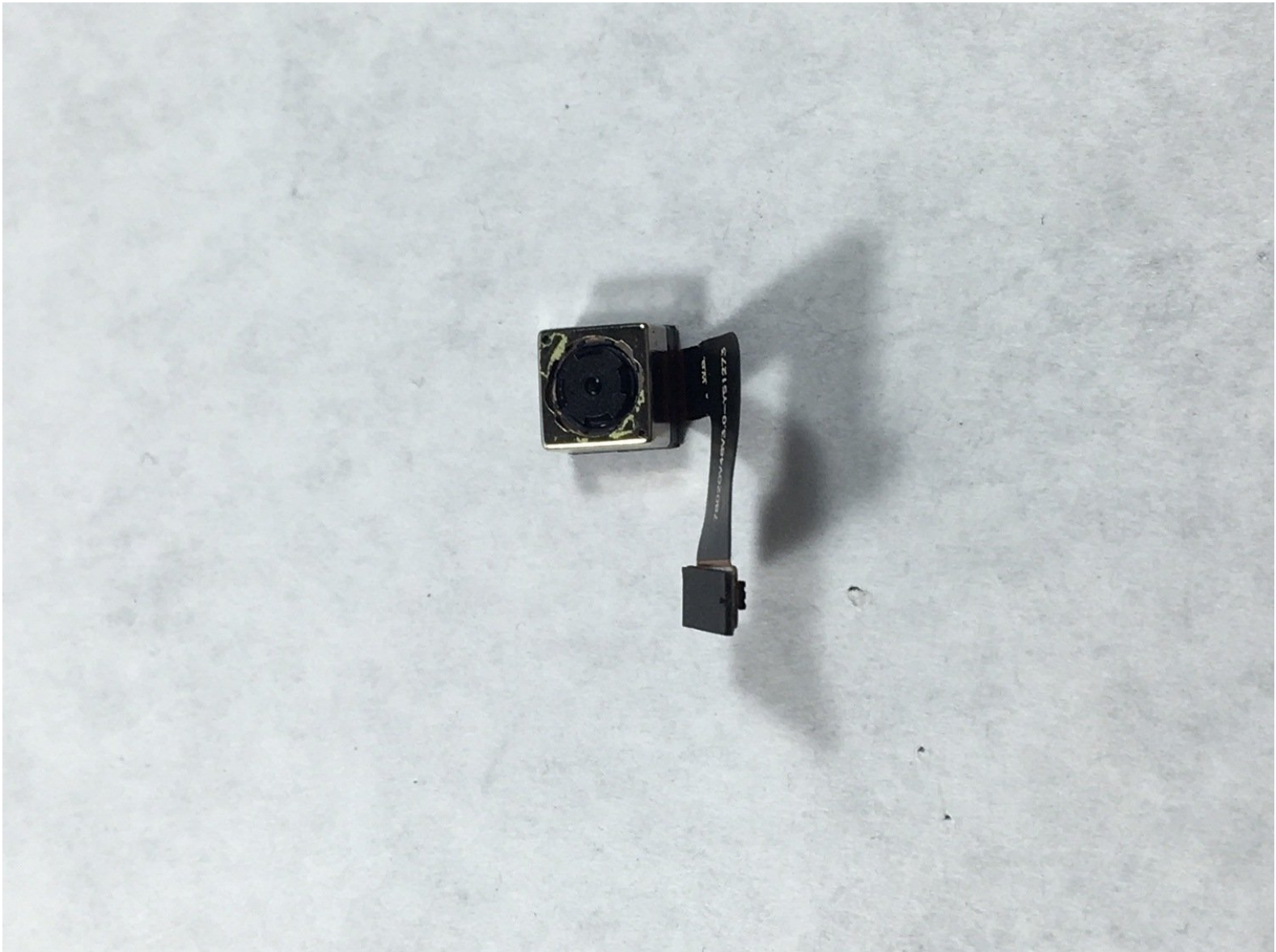




Insignia Flex Elite 7.85 Camera Replacement

this guide will enable the user remove and replace the main camera of the Insignia Flex Elite 7.85.

Written By: Antonio Olivieri



INTRODUCTION

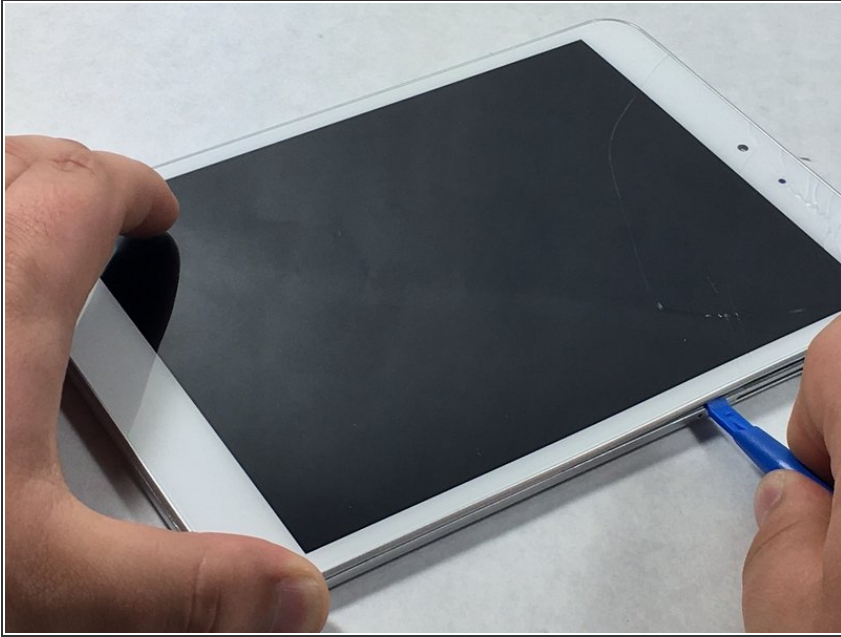
This guide will enable the user remove and replace the main camera of the tablet.



TOOLS:

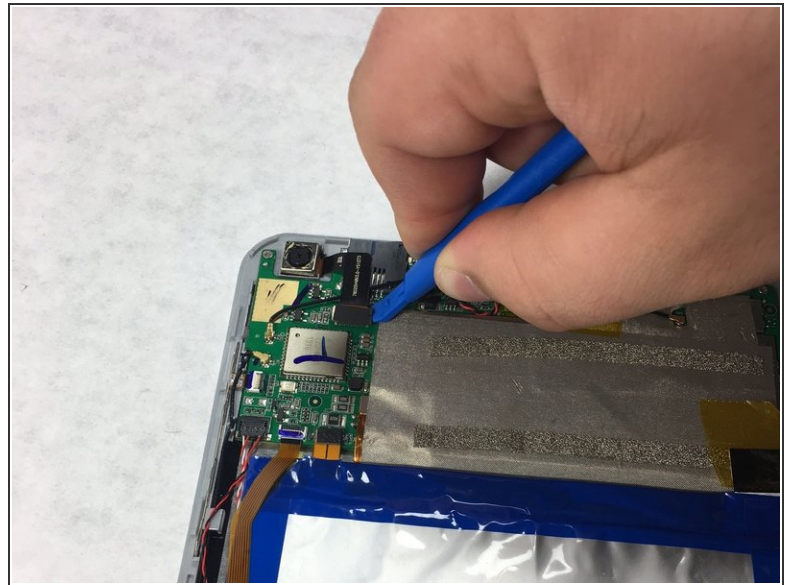
- [iFixit Opening Tools](#) (1)
-

Step 1 — Back Camera



- ⚠ Make sure the device is turned off before taking it apart to avoid any injuries.
- Use a plastic opening tool to remove the metal backing of the tablet.
- Insert the plastic opening tool between the screen and metal backing. Use a prying motion to lift the front case from the metal panel.
- Move the tool around the perimeter of the device until the screen separates.
- ⓘ The volume and power button will become free from device when the screen and metal backing are separated. These small pieces are easy to lose, be careful. They're easy to put back into place when reassembling the tablet.

Step 2



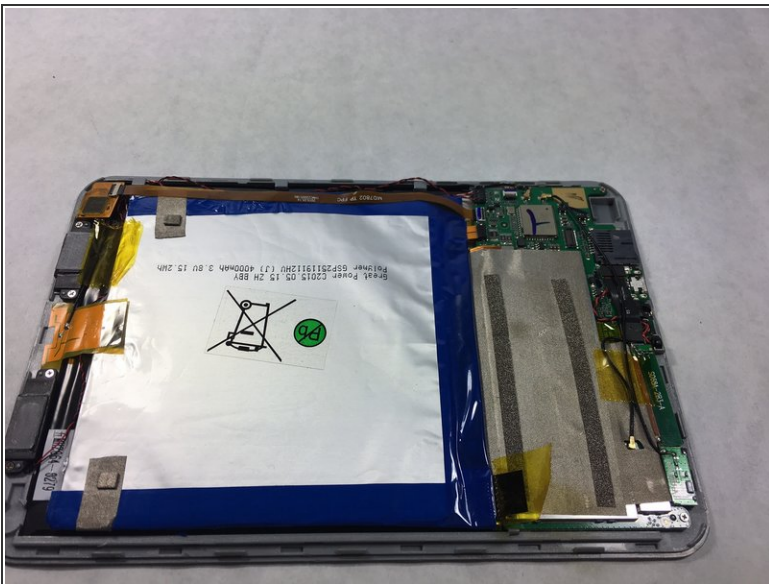
- Once the the tablet is open, locate the camera.
- There is a small black ribbon connector which connects the camera to the motherboard.
- Use a plastic opening tool to pry slightly on the black ribbon connector.
- Bend the black ribbon connector slightly so it will not be in the way.

Step 3



- Using a plastic opening tool, pry the camera from the mount.
- Pry around the perimeter of the camera until it comes free.
- ☑ Be careful, make sure the plastic frame does not break.

Step 4



- The camera should be out of its housing by now. Reinstall new camera.

To reassemble your device, follow these instructions in reverse order.