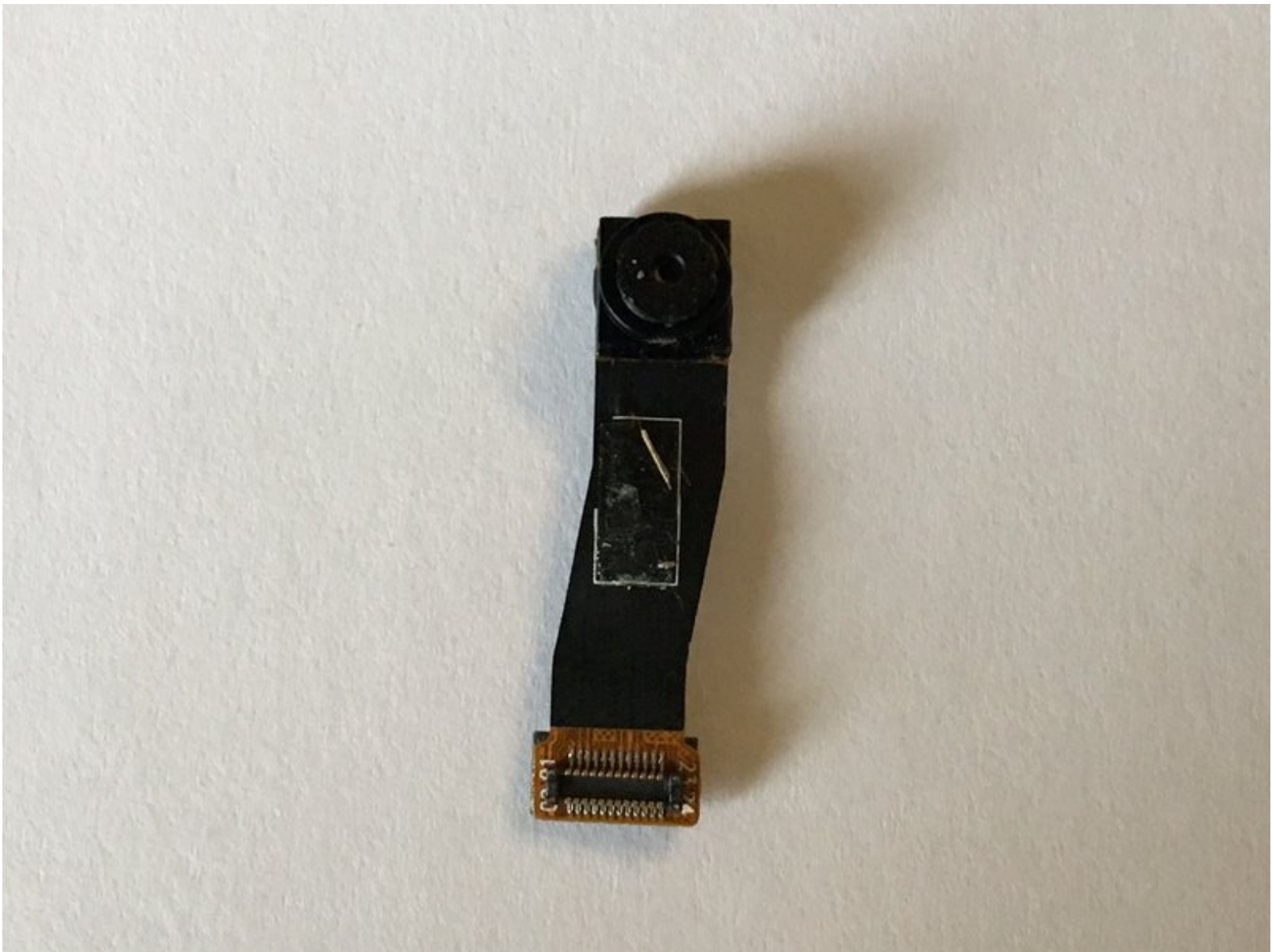




# Insignia Flex Elite 7.85 Front Camera Replacement

This guide will have step-by-step instructions enabling the user have the ability to remove and replace the front camera of the Insignia Flex Elite 7.85.

Written By: JOSI ZULU



---

## INTRODUCTION

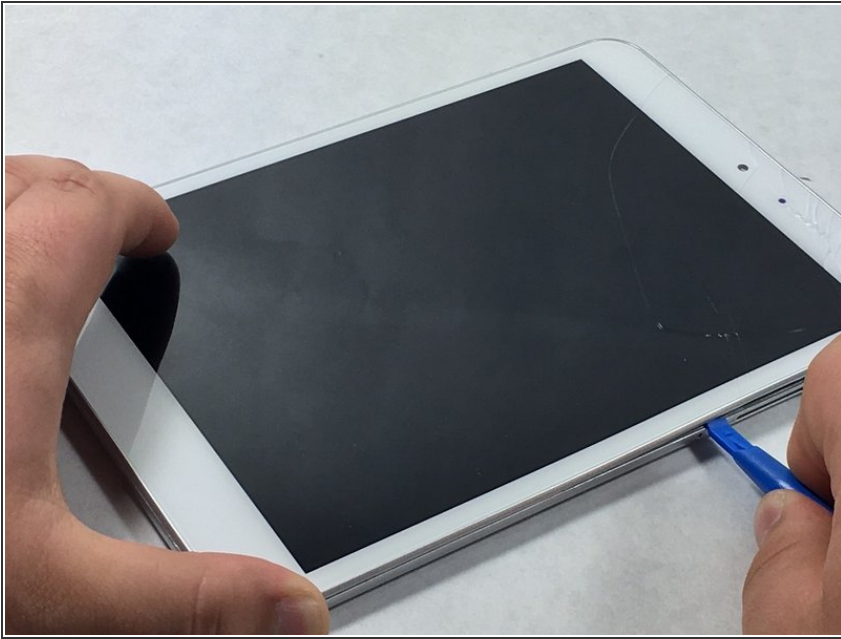
This guide will have step-by-step instructions enabling the user have the ability to remove and replace the front camera of the Insignia Flex Elite 7.85.



### TOOLS:

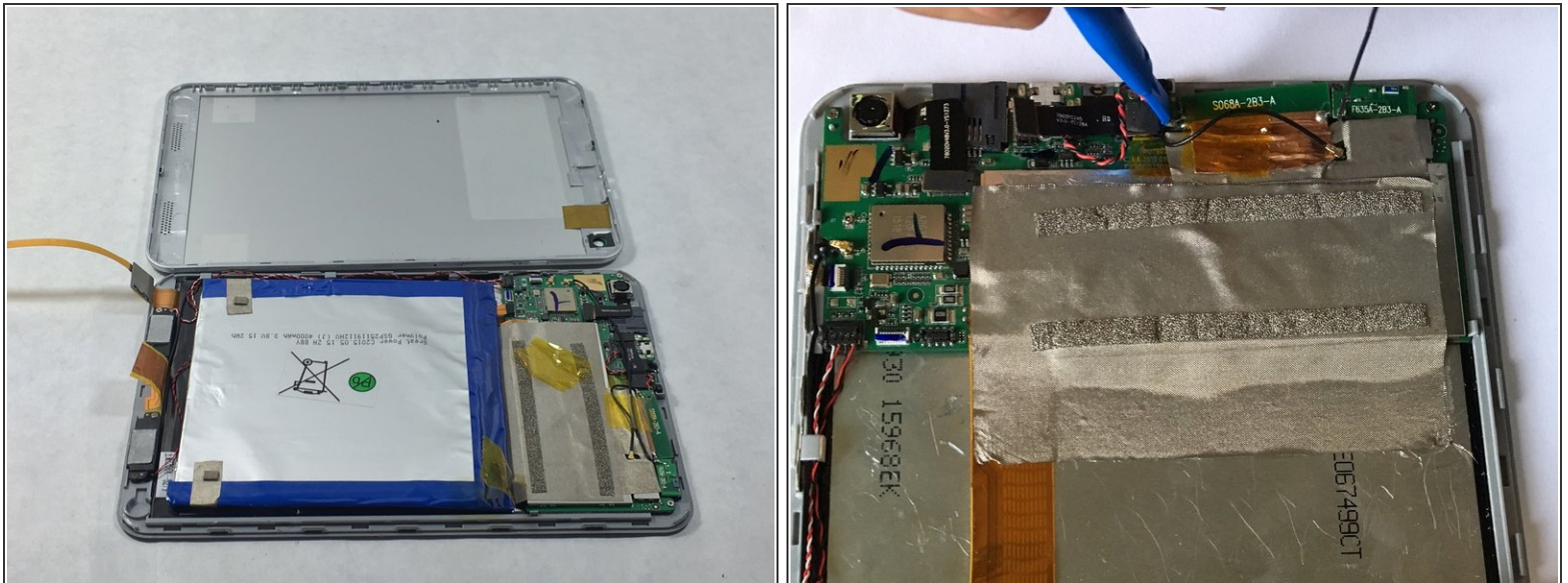
- [iFixit Opening Tools](#) (1)
-

## Step 1 — Front Camera



- ⚠ Make sure the device is turned off before taking it apart to avoid any injuries
- Use a plastic opening tool to remove the metal backing of the tablet
- Insert the plastic opening tool between the screen and metal backing. use a prying motion to lift the front case from the the metal panel.
- move the tool around the perimeter of the device until the screen separates.
- ⓘ the volume and the power button will become free from device when the screen and metal backing are separated. These small pieces are easy to lose, be careful. They're easy to put back into place when reassembling the tablet.

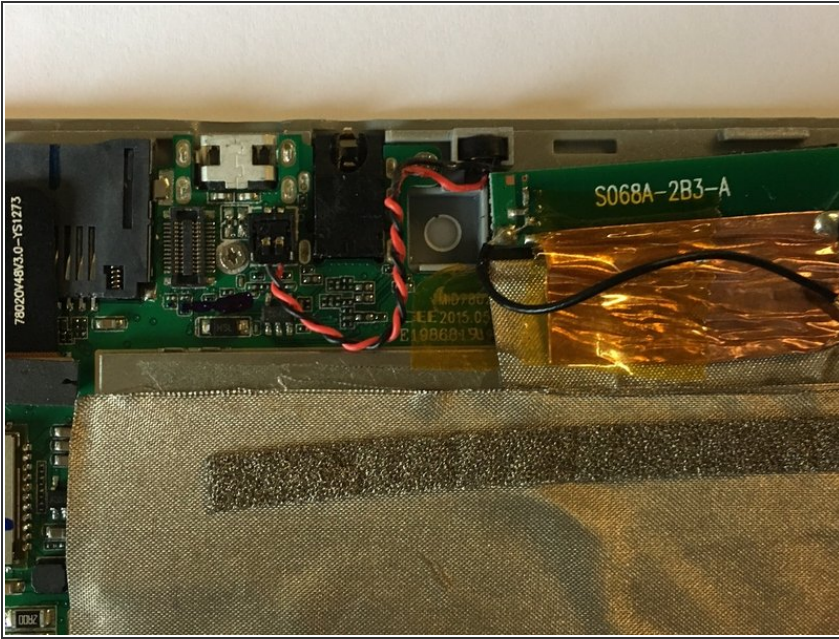
## Step 2



- once the tablet is open, locate the camera
- The camera is fitted in a small square compartment
- Use a plastic opening tool to pry slightly on the back of the camera making it easier to come out of its compartment
- When removing the camera, ensure that the red and black wire on top of it is not disconnected from the motherboard.

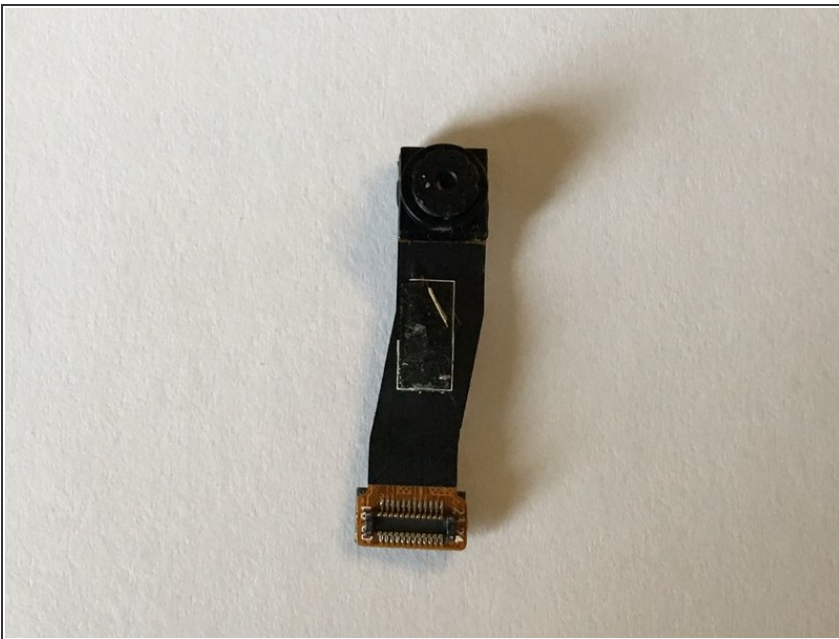


### Step 3



- Using a plastic opening tool, pry the camera from the compartment.
- Pry around the perimeter of the camera until it comes out free.
- Be careful, make sure the motherboard does not break.

### Step 4



- The front camera should be out of its compartment by now. Reinstall the new camera.

To reassemble your device, follow these instructions in reverse order.