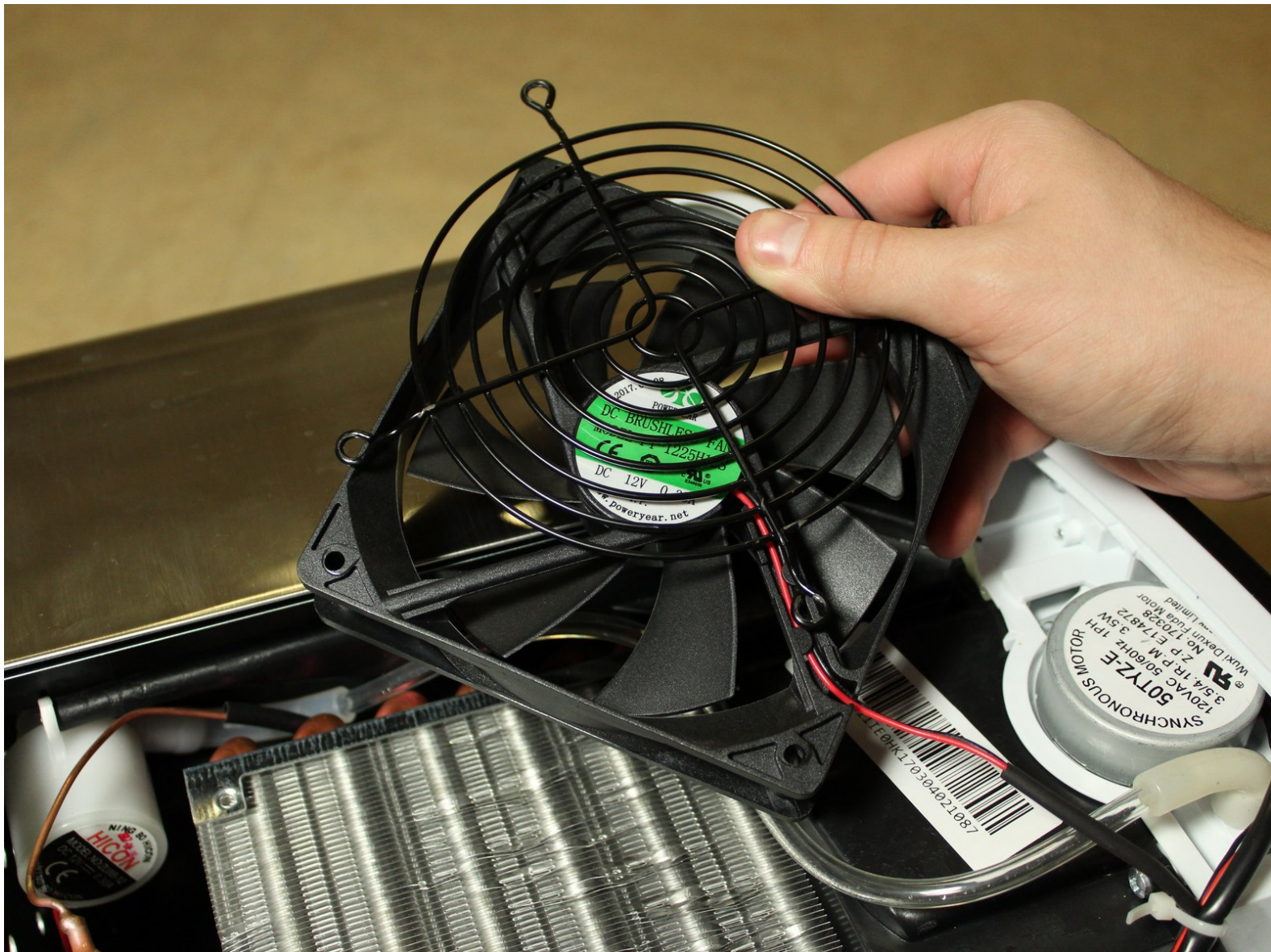




Insignia Ice Maker NS-IMP26SS7 Fan Replacement

How to replace the Fan on an Insignia Ice Maker

Written By: Evan Taylor



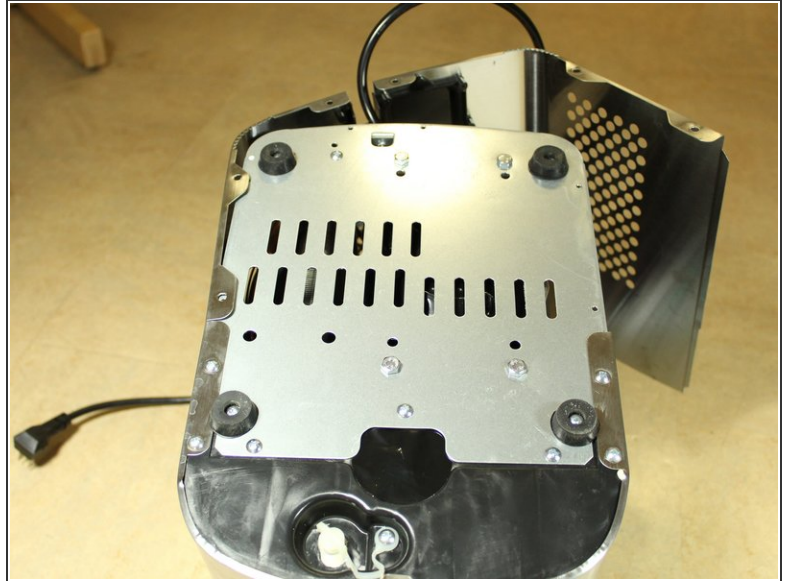
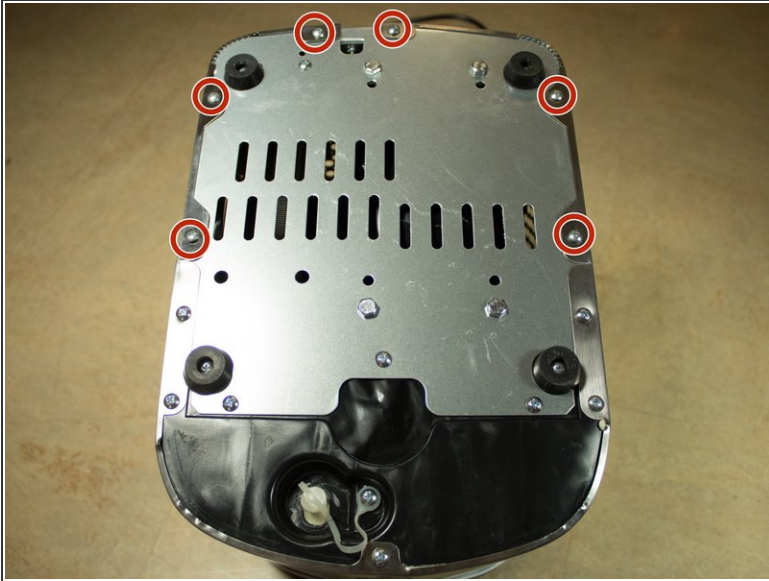
INTRODUCTION

This guide will show the steps required to disassemble an Insignia Ice Maker and replace the fan inside. It should take approximately 5-10 minutes.

TOOLS:

- [Phillips 3 Screwdriver](#) (1)
 - [Utility Scissors](#) (1)
 - [iFixit Tech Knife](#) (1)
-

Step 1 — Fan



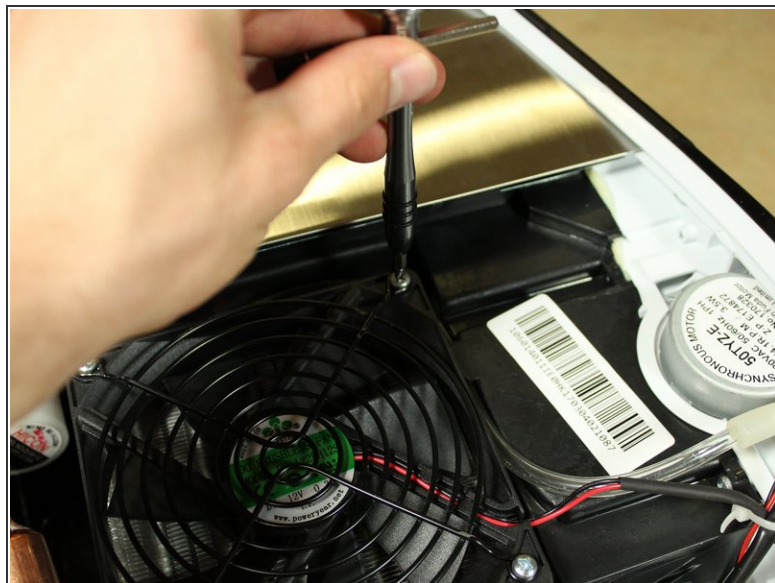
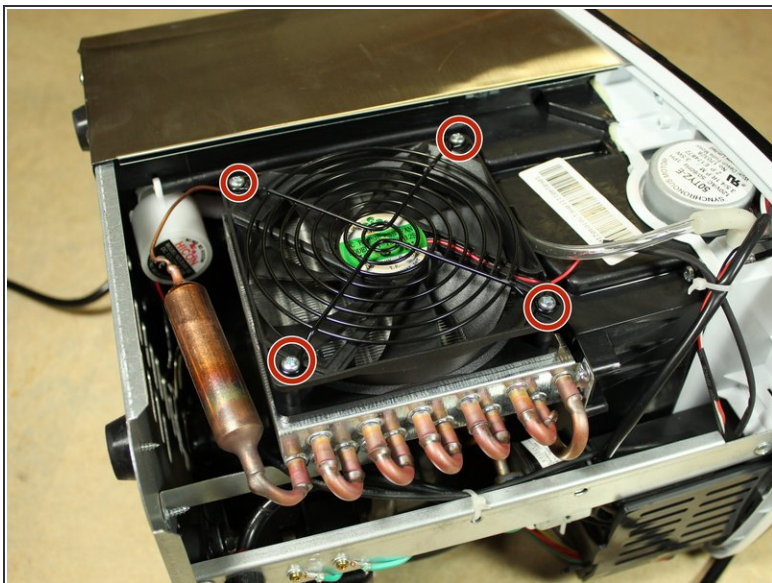
- Undo the 6 Screws found on the bottom edge holding the rear casing on.

Step 2



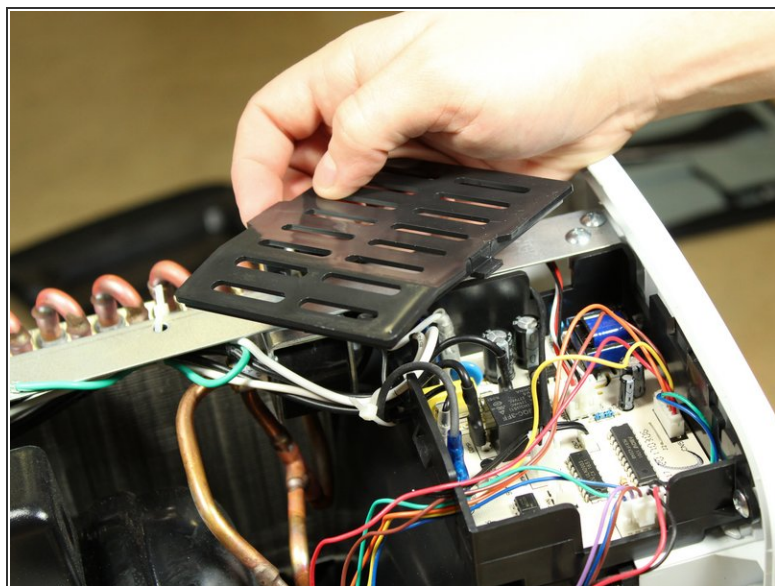
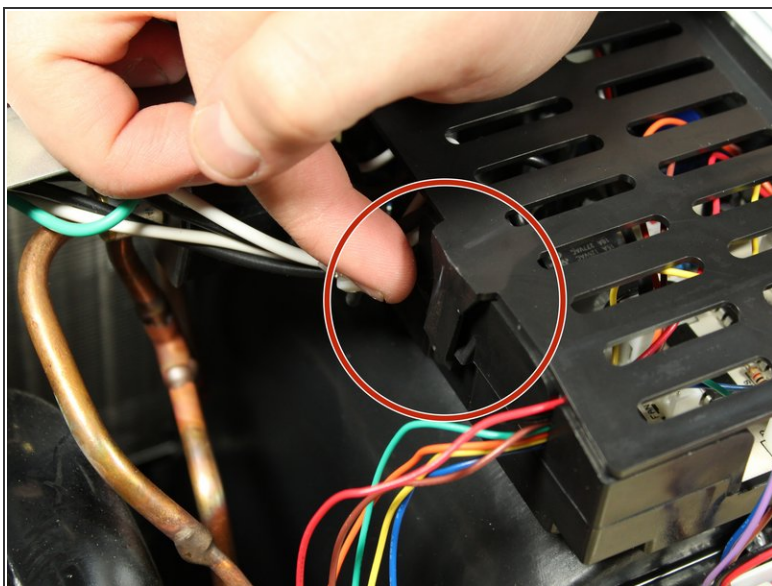
- Pull the casing off.

Step 3



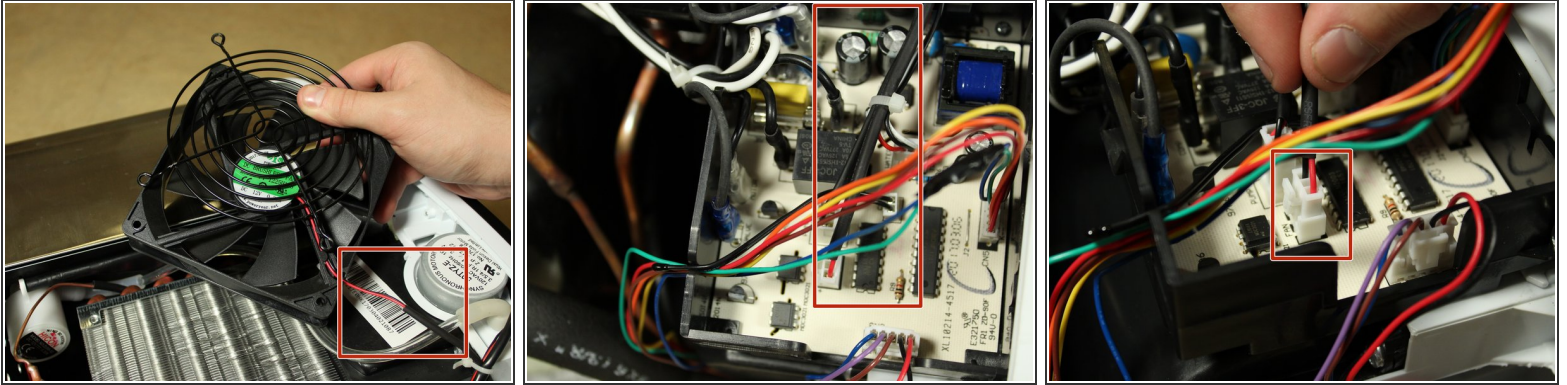
- Locate the fan on the side of the Ice maker and undo the 4 screws holding it in place.

Step 4



- Remove the cover from the circuit board by pressing against the lever to the side. A pry tool may be needed.

Step 5



- Follow the fan's power cable and unplug.
- You may have to cut a zip tie holding the cable in place.

To reassemble your device, follow these instructions in reverse order.