



Insignia Ice Maker NS-IMP26SS7 Ice Tray Replacement

How to replace Ice tray on Insignia Ice Maker.

Written By: Evan Taylor



INTRODUCTION

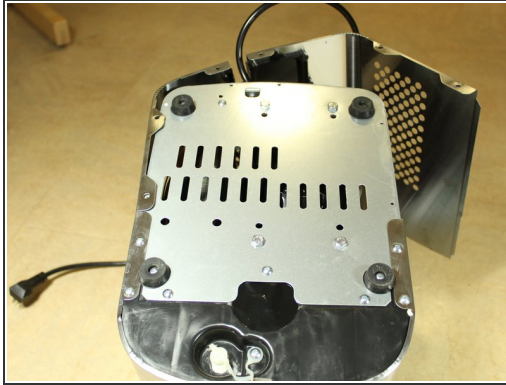
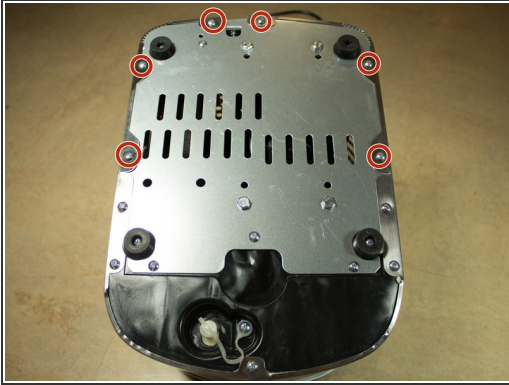
This guide will show the required steps to replace the ice tray on the Insignia Ice Maker.



TOOLS:

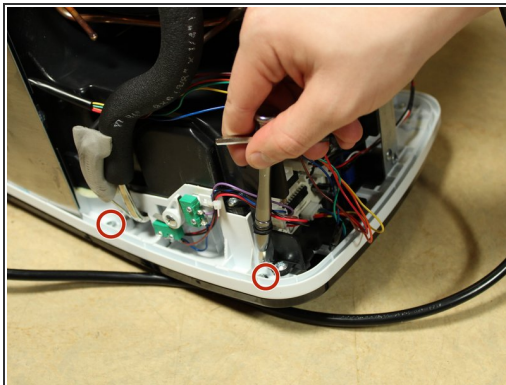
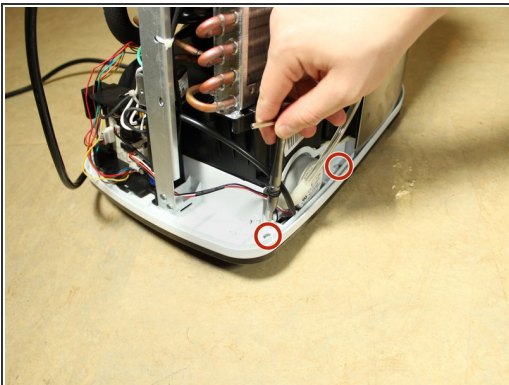
- [Phillips 3 Screwdriver](#) (1)
 - [iFixit Opening Tools](#) (1)
 - [Utility Scissors](#) (1)
 - [iFixit Tech Knife](#) (1)
-

Step 1 — Water Tray



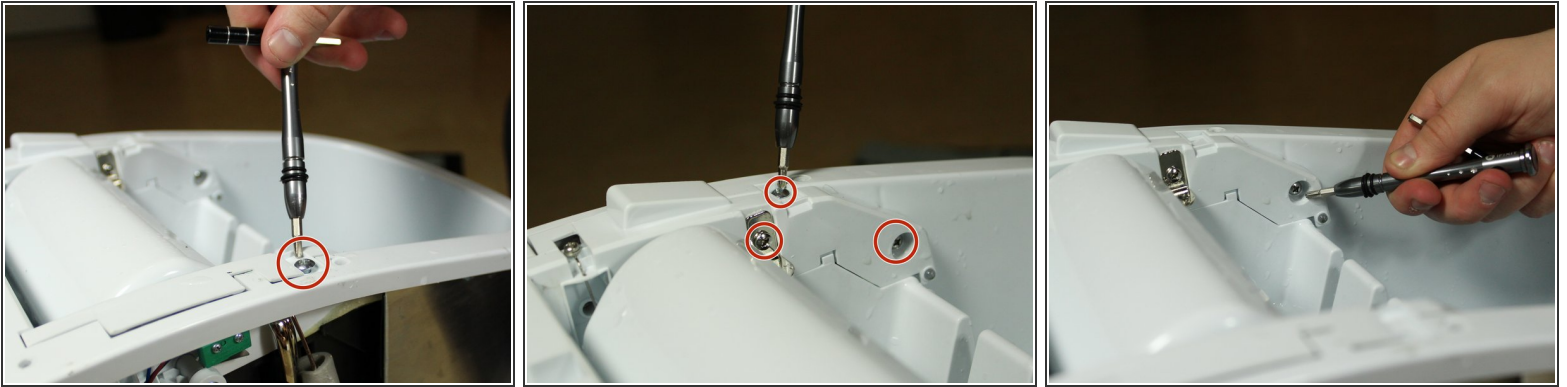
- Remove the 6 screws holding the rear casing on.
- Remove the rear casing

Step 2



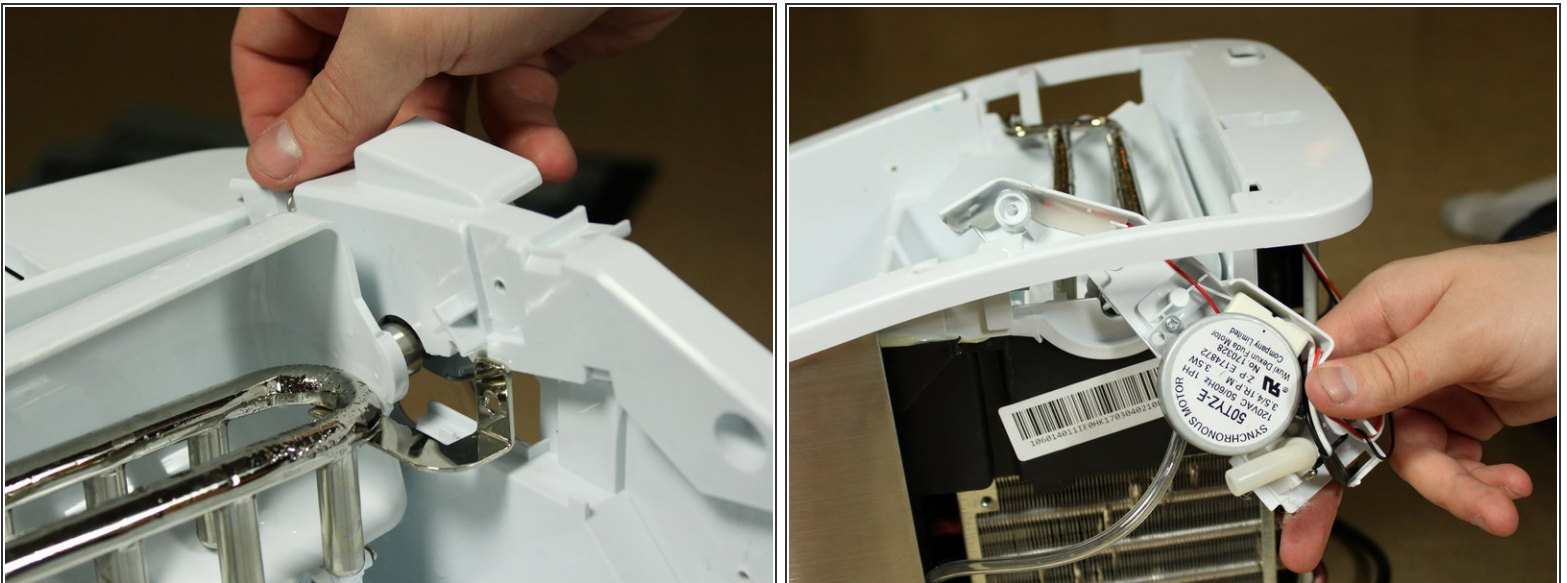
- Remove the 4 screws holding the Ice Tray to the body of the Ice Maker.

Step 3



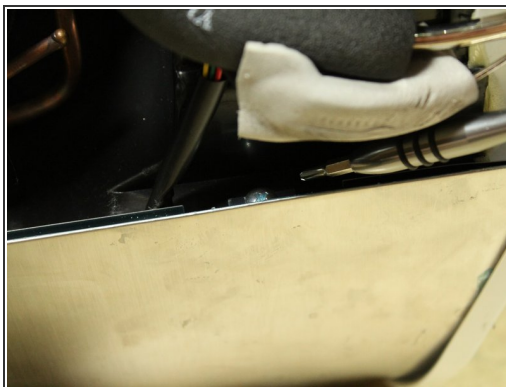
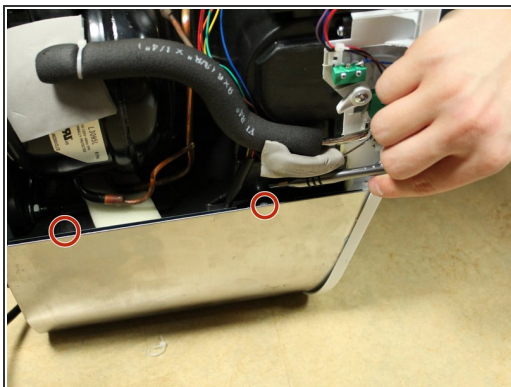
- Remove the 4 screws holding the Ice Tray from the top.

Step 4



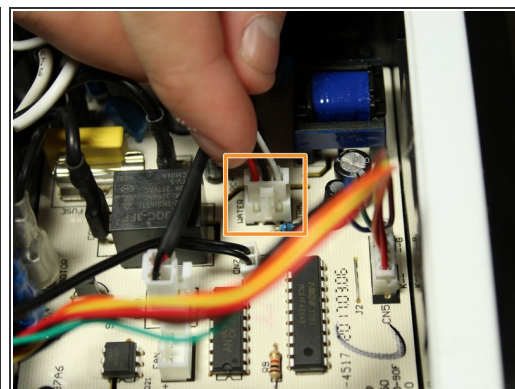
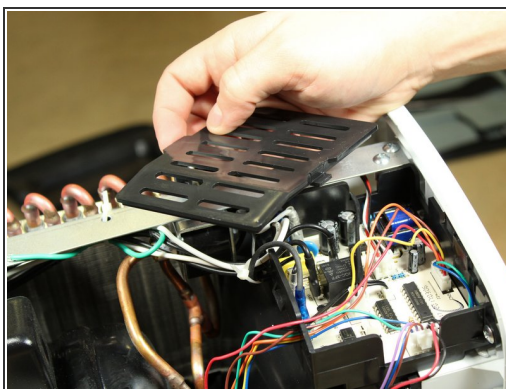
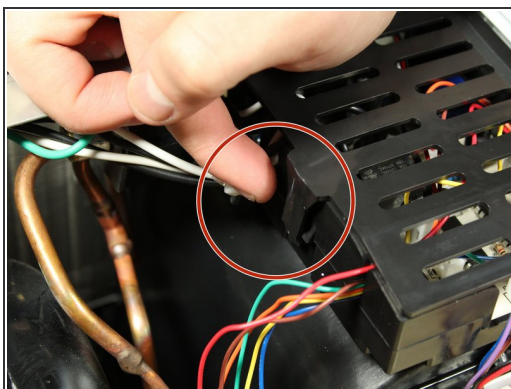
- Lift the Water Pump out of the way

Step 5



- Remove the final 2 screws.

Step 6



- Remove the plastic cover from the circuit board by pressing the lever on the side. A pry tool may be required.
- Disconnect the water tray cord.

To reassemble your device, follow these instructions in reverse order.