



Insignia Ice Maker NS-IMP26SS7 Water Pump Replacement

Replace broken Water Pump on Insignia Ice Maker

Written By: Evan Taylor



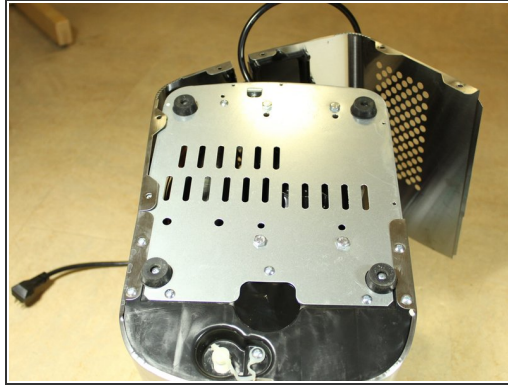
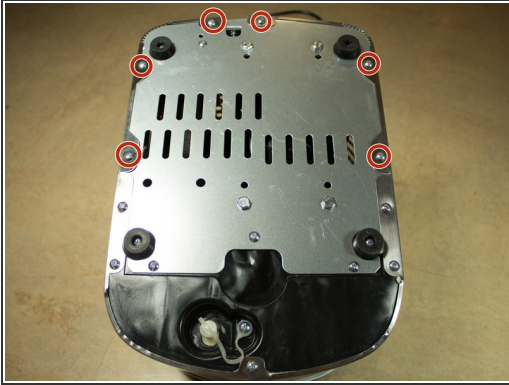
INTRODUCTION

This guide will show how to remove the Water Pump on an Insignia Ice maker. The Ice Tray replacement guide is required to begin disassembling the Water Pump.

TOOLS:

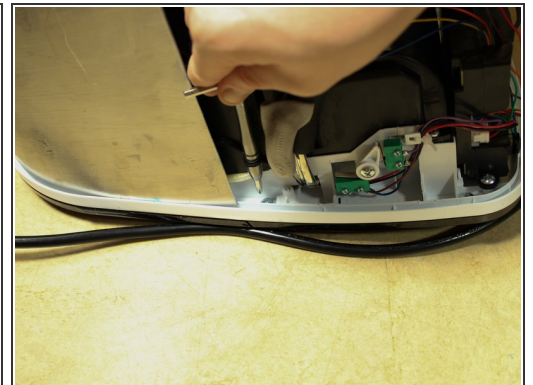
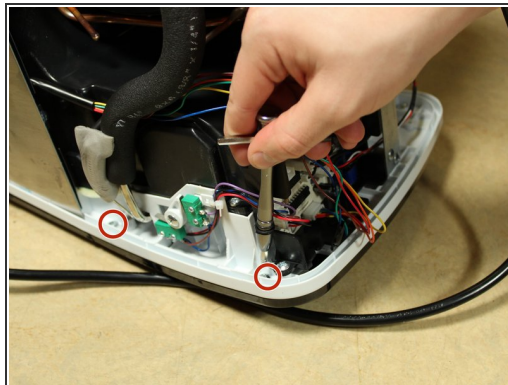
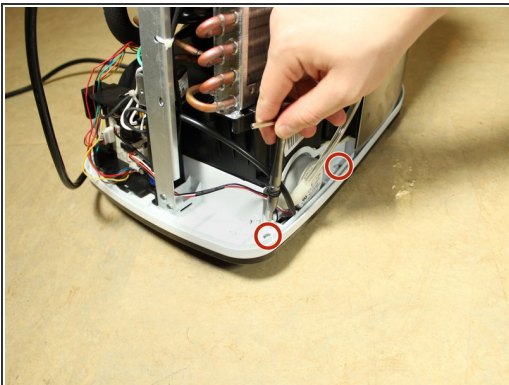
- [Phillips 3 Screwdriver](#) (1)
 - [iFixit Opening Tools](#) (1)
 - [Utility Scissors](#) (1)
 - [iFixit Tech Knife](#) (1)
-

Step 1 — Water Tray



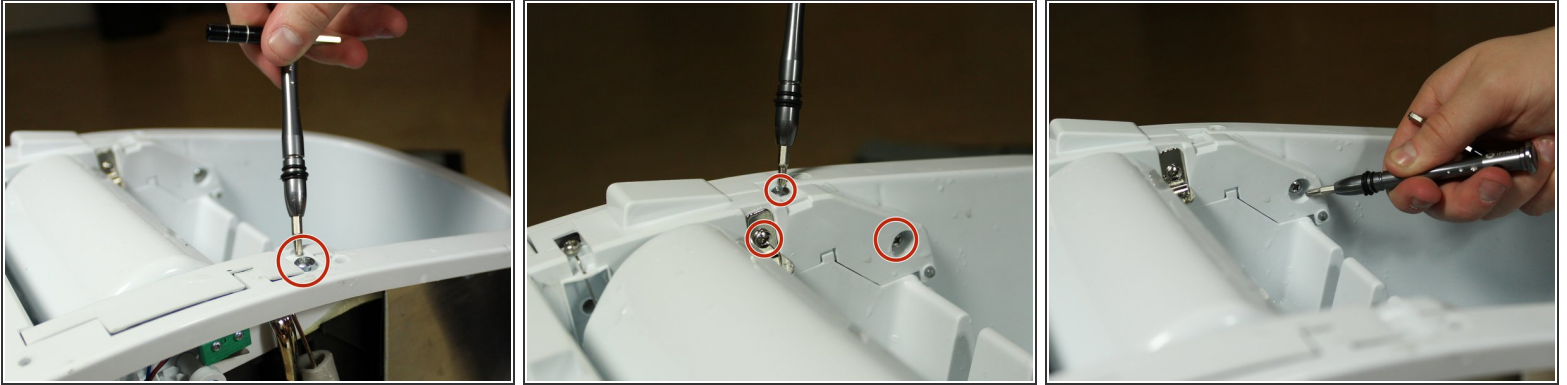
- Remove the 6 screws holding the rear casing on.
- Remove the rear casing

Step 2



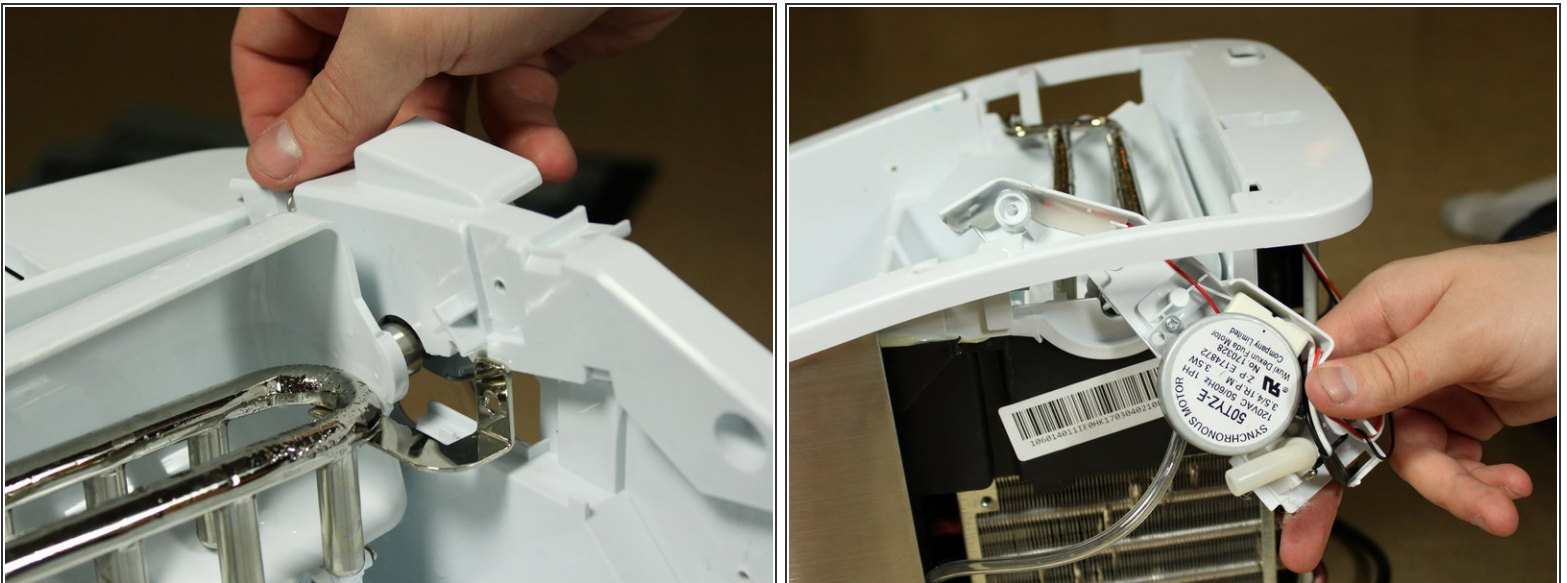
- Remove the 4 screws holding the Ice Tray to the body of the Ice Maker.

Step 3



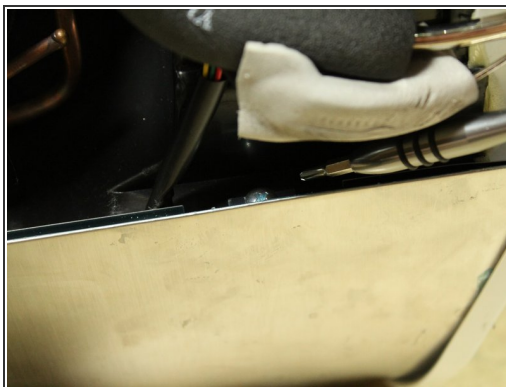
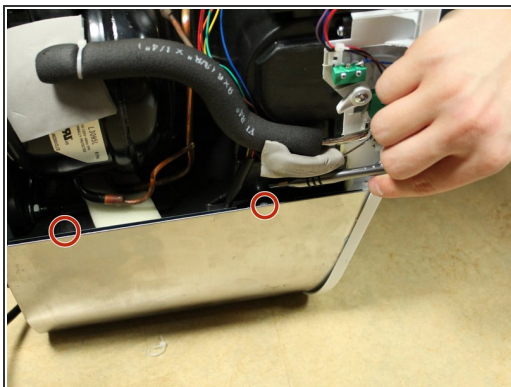
- Remove the 4 screws holding the Ice Tray from the top.

Step 4



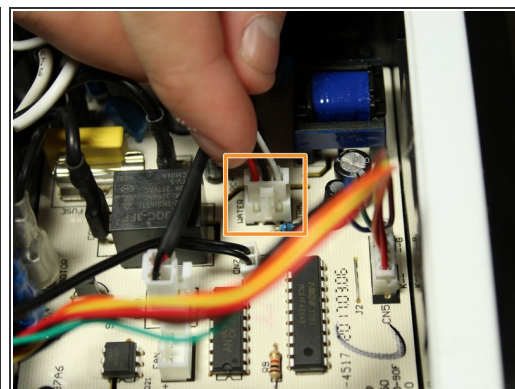
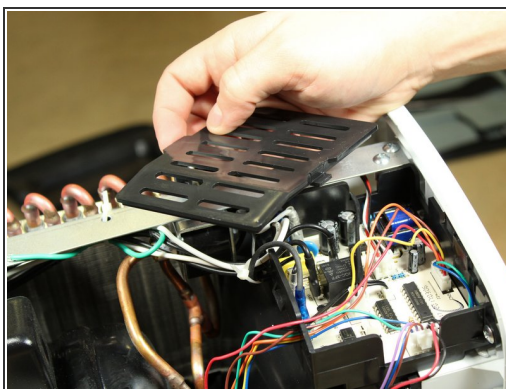
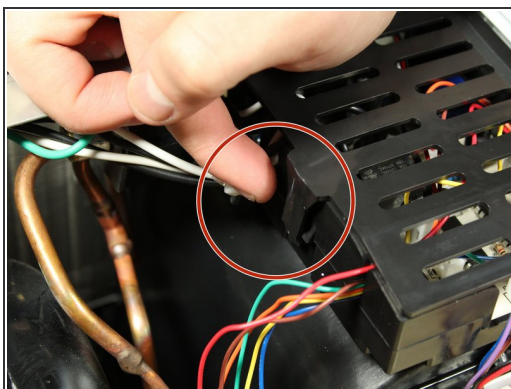
- Lift the Water Pump out of the way

Step 5



- Remove the final 2 screws.

Step 6



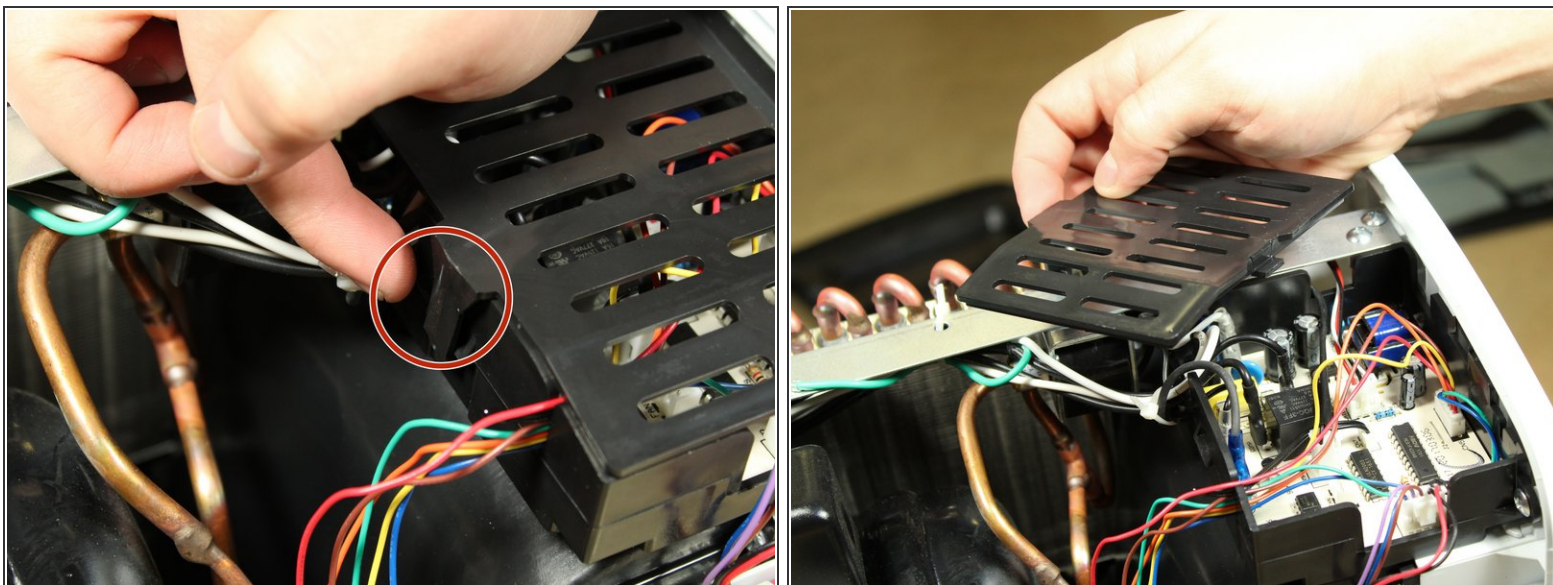
- Remove the plastic cover from the circuit board by pressing the lever on the side. A pry tool may be required.
- Disconnect the water tray cord.

Step 7 — Water Pump



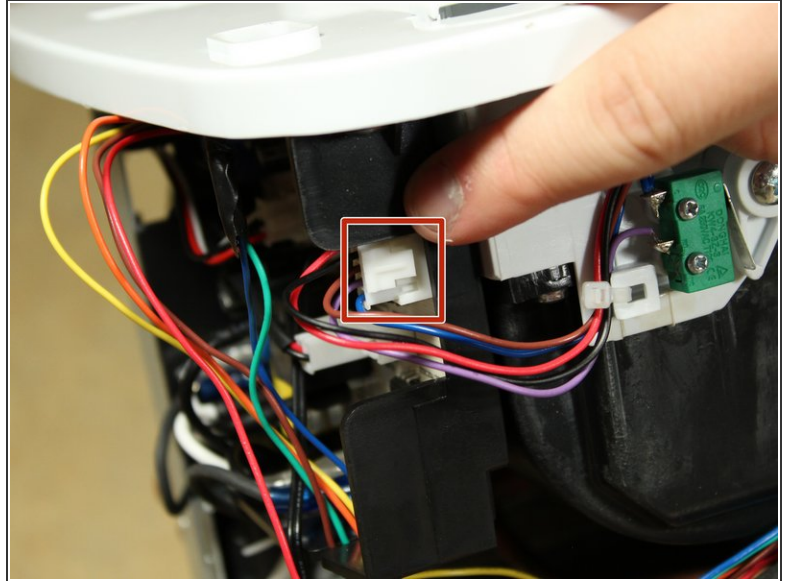
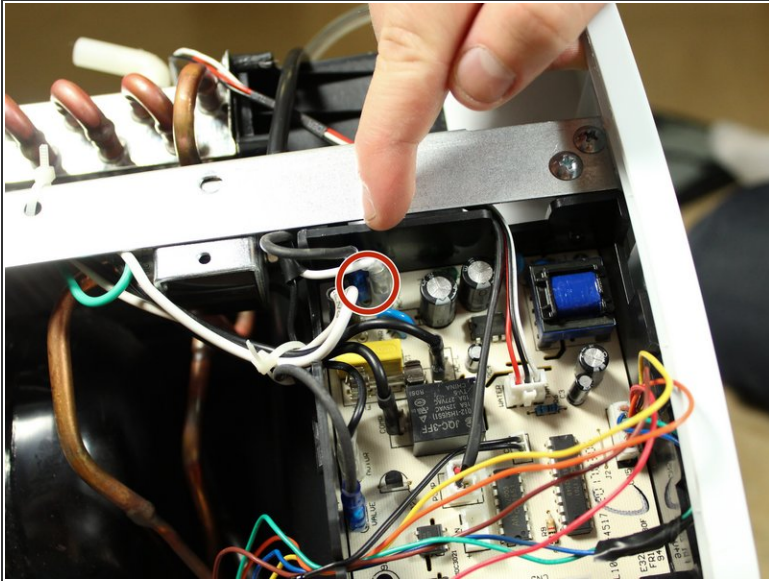
- Disconnect the water hose
- Remove the 2 screws holding the pump to the Ice Tray attachment.

Step 8



- Remove the plastic covering over the circuit board by pressing against the latch on one side. A prying tool may be needed.

Step 9



- Disconnect the power supply as well as the control cables from the circuit board.
- You may have to cut through some electrical tape to free the wires.

To reassemble your device, follow these instructions in reverse order.