



Insignia NS-24ER310NA17 Disassembly

Use this guide to disassemble the Insignia NS-24ER310NA17.

Written By: Hannah Berenjfoorosh



INTRODUCTION

This guide will take you through the process of disassembling the housing of the Insignia NS-24ER310NA17 in order to gain access to the inner parts. This is a primary step for most replacement guides regarding this device.



TOOLS:

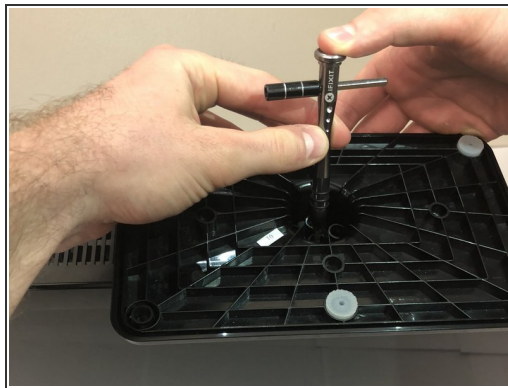
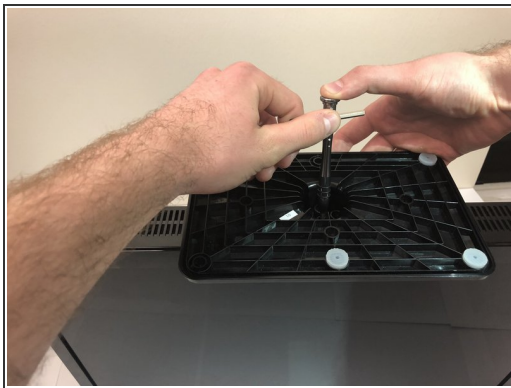
- [Phillips #00 Screwdriver](#) (1)
-

Step 1 — Insignia NS-24ER310NA17 Disassembly



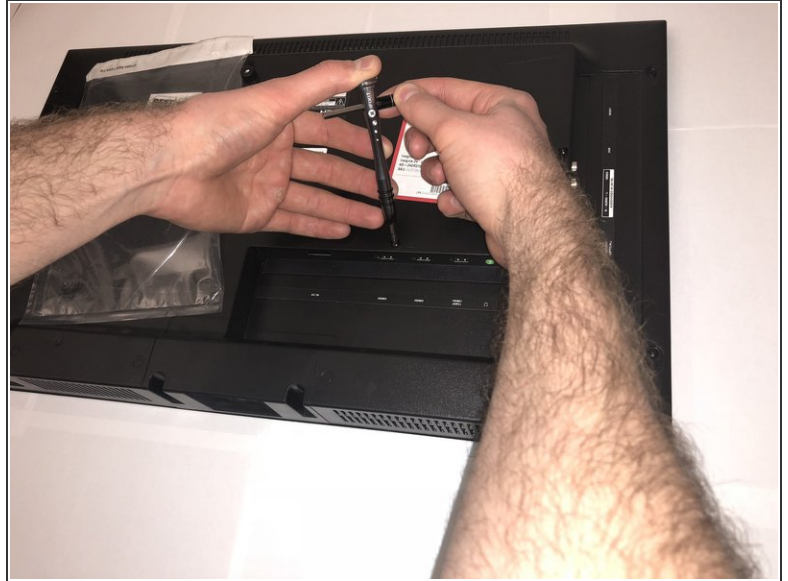
- Place the TV on a surface so that the screen is facing down and you have access to the back.

Step 2



- Flip the TV upside down so that you have access to the TV base.
- Use a Phillips #2 screwdriver to take out the four screws on the bottom of the base.
- Remove the base from the frame.

Step 3



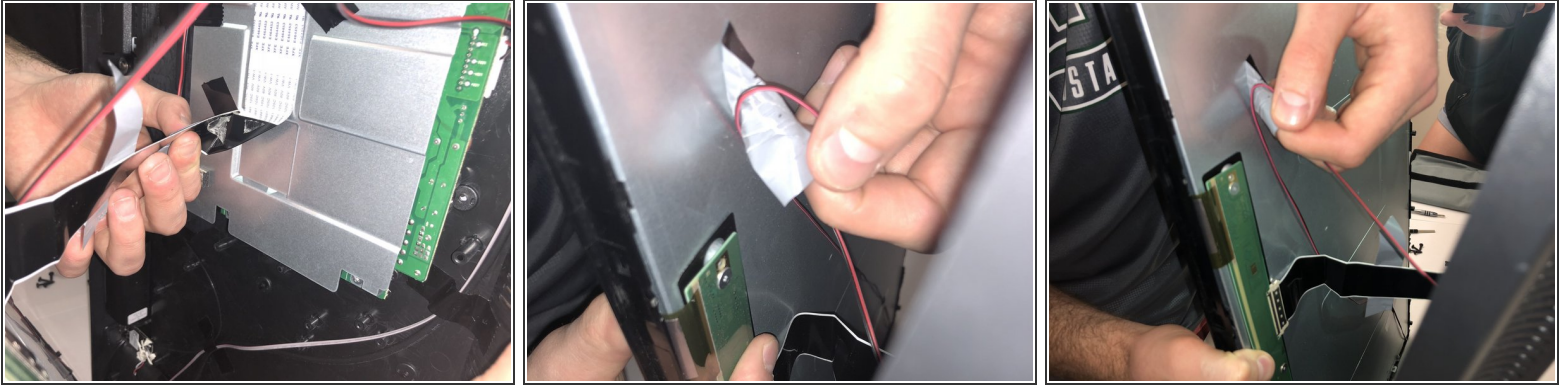
- Flip the TV back so that the screen is face down
- Use the Phillips 00 Screwdriver to remove all the Phillips Head Screws from the the backside of the TV.

Step 4



- Flip the TV so that the top of the TV is on your flat surface.
- Gently pry apart the front and back of Tv from one another. The two sides of your TV should be easily pulled apart since there are no longer any screws holding it together.

Step 5



- There are wires still keeping the two sides of TV together, so remove all the pieces of tape to detach the wires from sides.

Step 6



- You should now be able to pry apart your TV so that you have a clear view of the inside on both sides.

To reassemble your device, follow these instructions in reverse order.