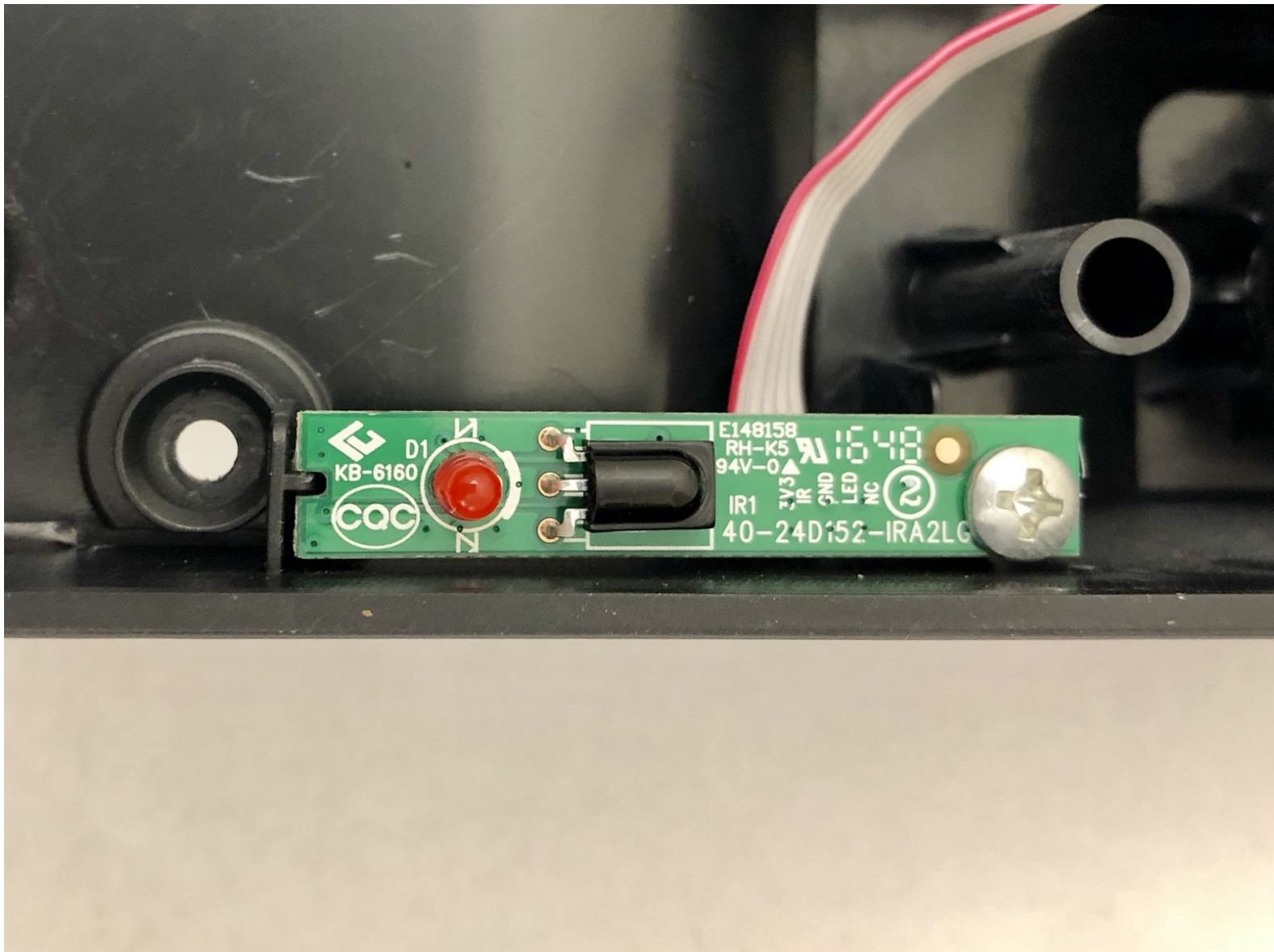




# Insignia NS-24ER310NA17 Infrared Sensor Replacement

Use this guide to replace the infrared sensor in your Insignia television.

Written By: Joelle Hylton



## INTRODUCTION

Use this guide to replace the infrared sensor in your Insignia NS-24ER310NA17 television.



### TOOLS:

- [Phillips #00 Screwdriver](#) (1)



### PARTS:

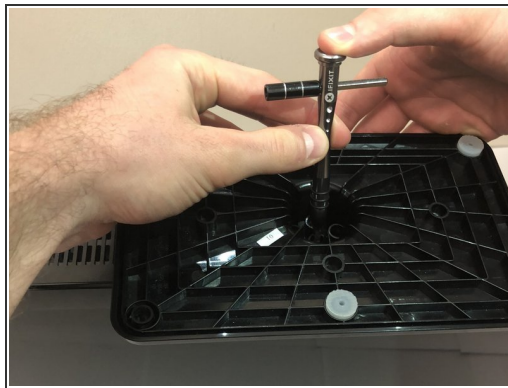
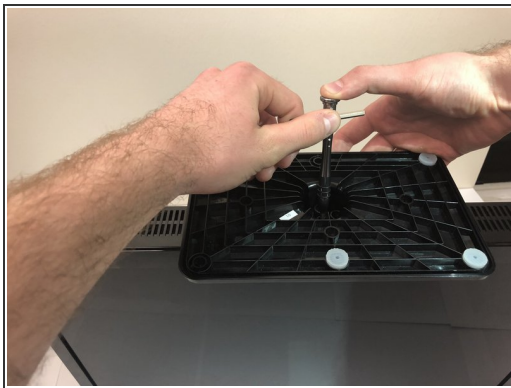
- [TCL 40FS3800 IR Sensor KB-6160](#) (1)

## Step 1 — Insignia NS-24ER310NA17 Disassembly



- Place the TV on a surface so that the screen is facing down and you have access to the back.

## Step 2



- Flip the TV upside down so that you have access to the TV base.
- Use a Phillips #2 screwdriver to take out the four screws on the bottom of the base.
- Remove the base from the frame.



## Step 3



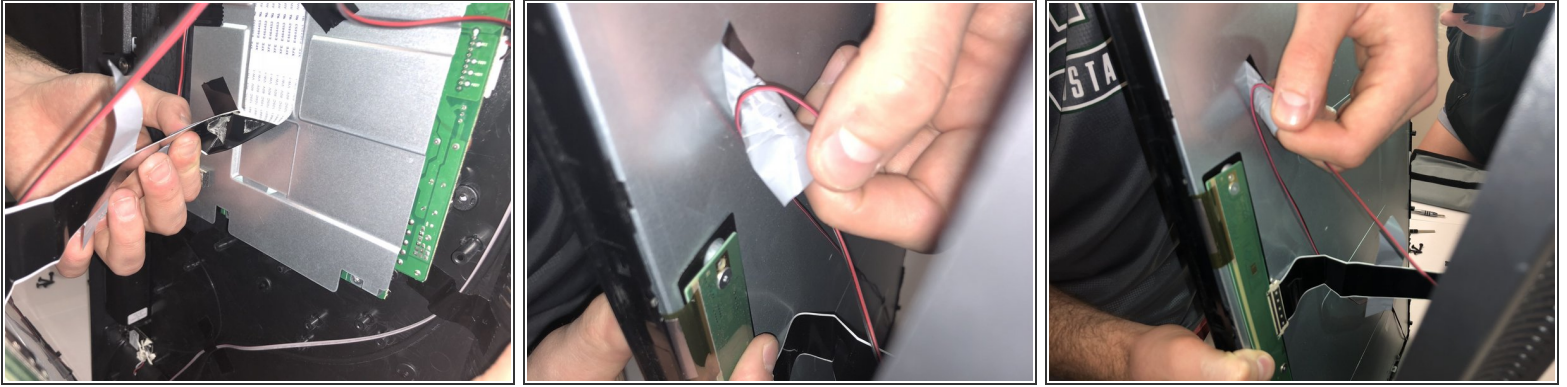
- Flip the TV back so that the screen is face down
- Use the Phillips 00 Screwdriver to remove all the Phillips Head Screws from the the backside of the TV.

## Step 4



- Flip the TV so that the top of the TV is on your flat surface.
- Gently pry apart the front and back of Tv from one another. The two sides of your TV should be easily pulled apart since there are no longer any screws holding it together.

## Step 5



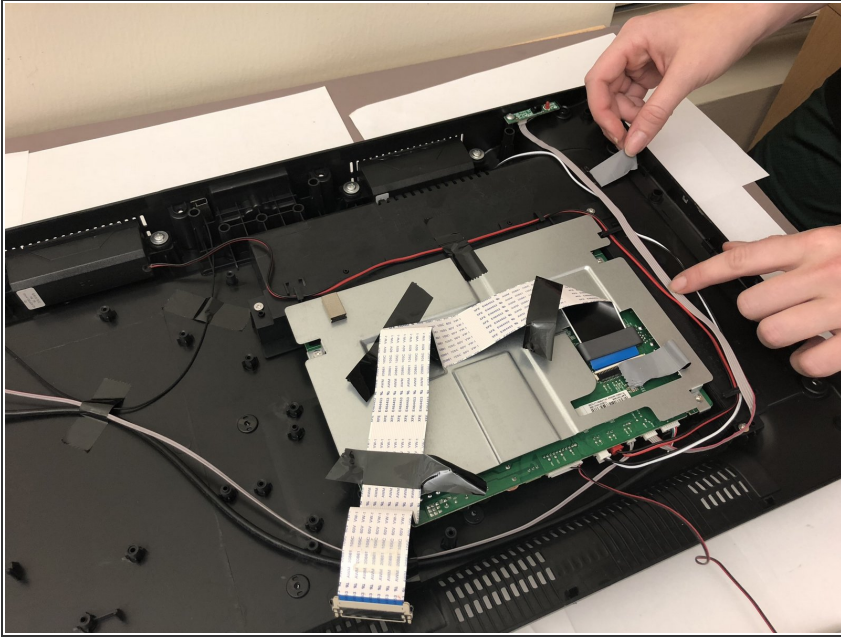
- There are wires still keeping the two sides of TV together, so remove all the pieces of tape to detach the wires from sides.

## Step 6



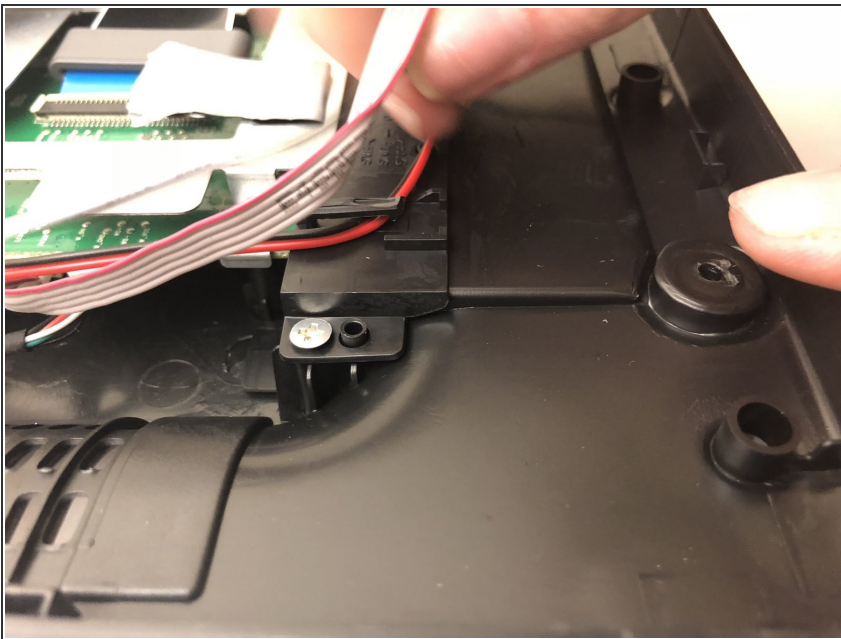
- You should now be able to pry apart your TV so that you have a clear view of the inside on both sides.

## Step 7 — Motherboard



- Remove all strips of tape attached to the silver steel rectangular piece.

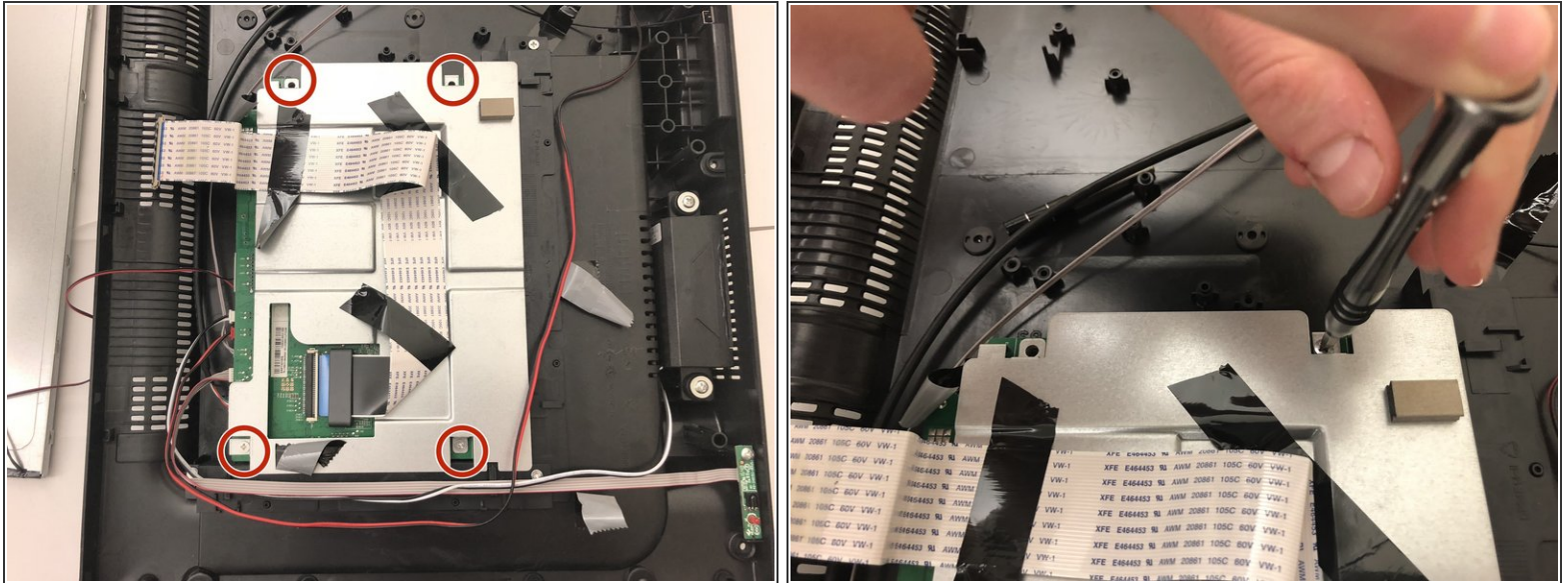
## Step 8



- Pull the red wire out from under the black plastic clip.

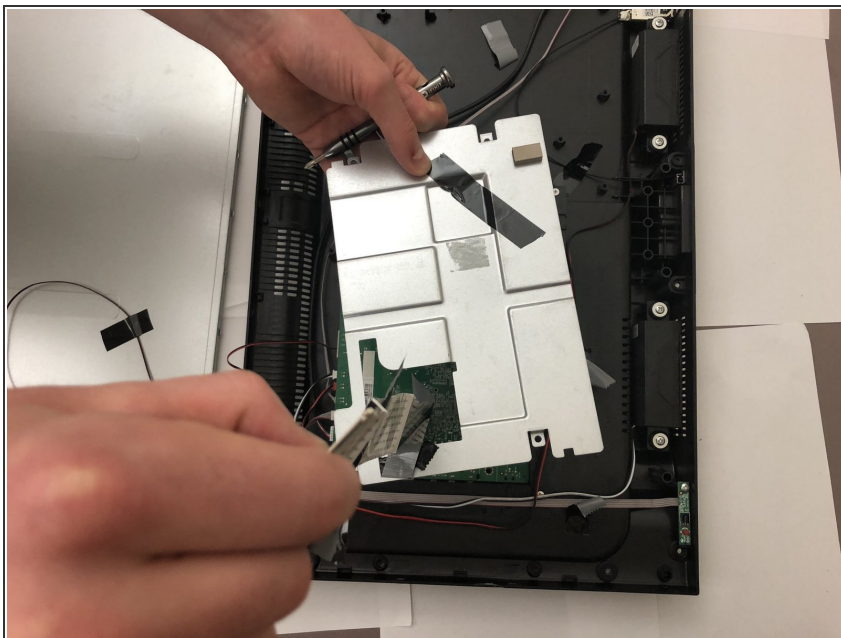


## Step 9



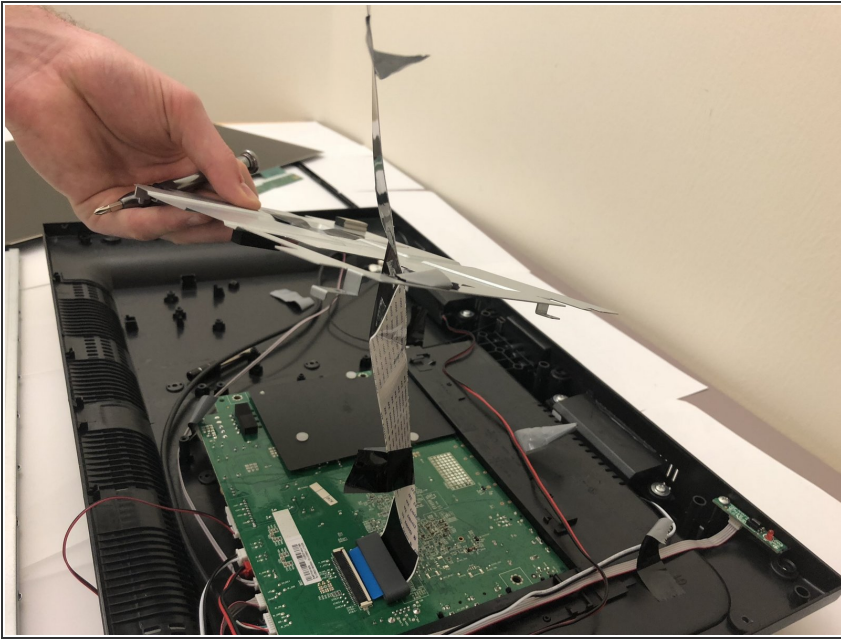
- Unscrew the four screws surrounding the steel rectangle, which lays on top of the mainboard, with a Phillips 00 Screwdriver.

## Step 10



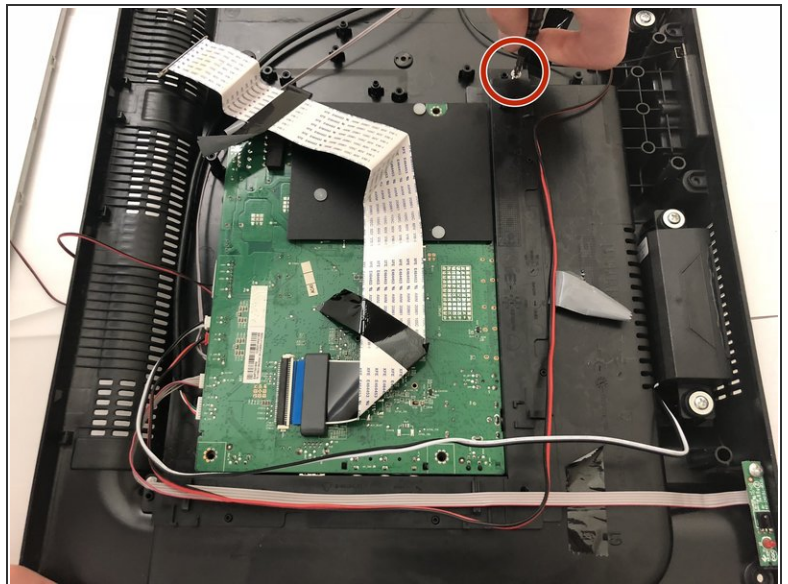
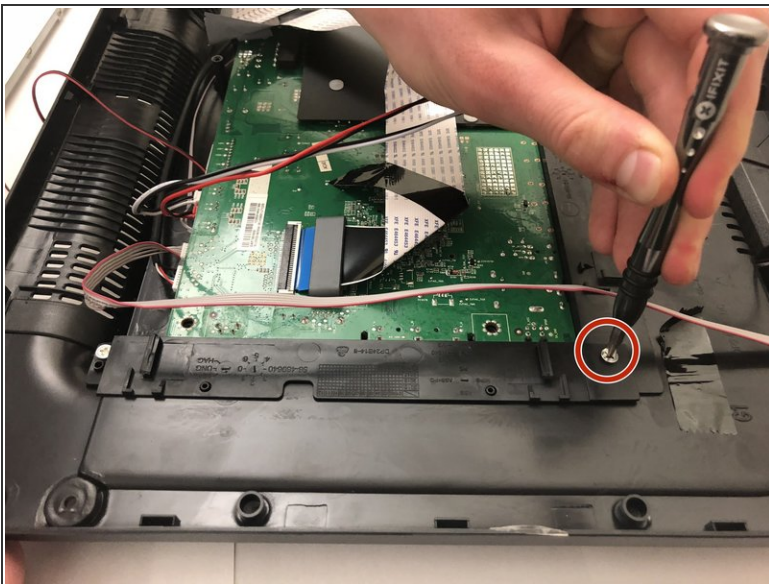
- Carefully lift the silver steel rectangular piece.

## Step 11



- The silver steel rectangular piece will be attached to the mainboard with a strip of tape. Remove this strip of tape.

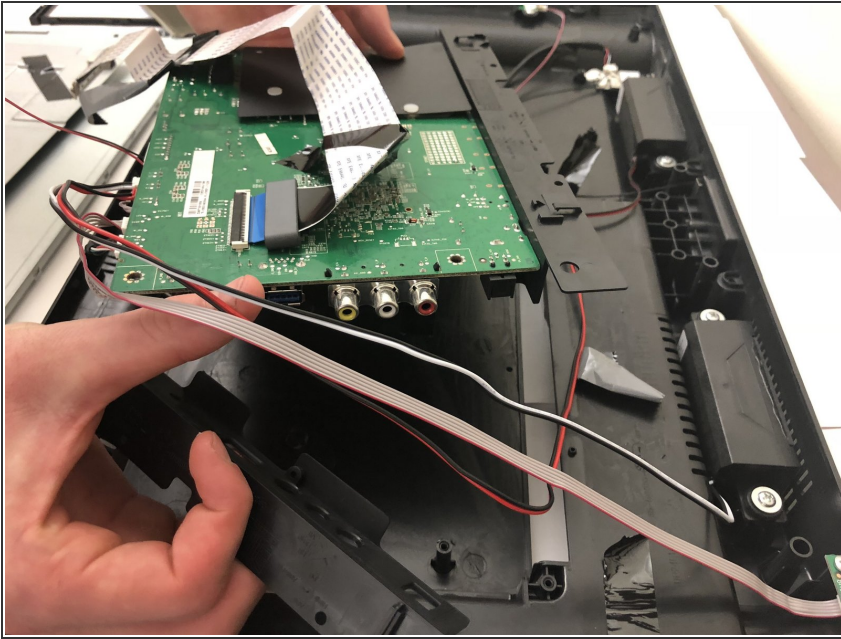
## Step 12



- Use a Phillips #00 screwdriver to unscrew the two screws on both sides of the motherboard.

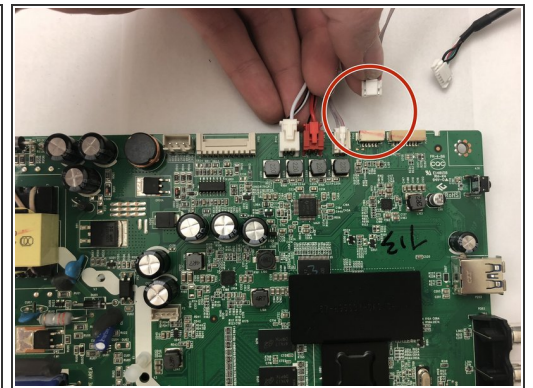
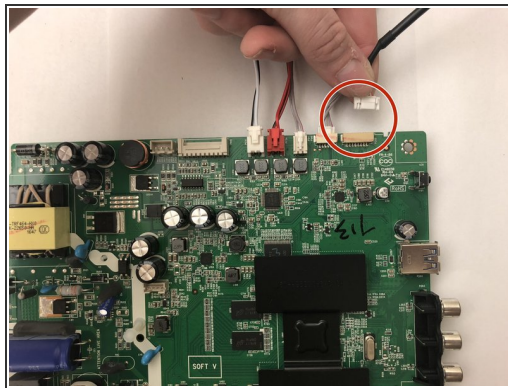
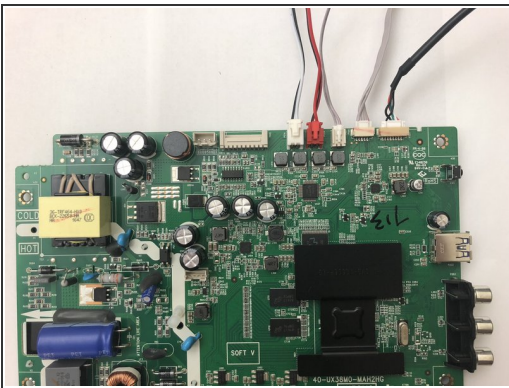


## Step 13



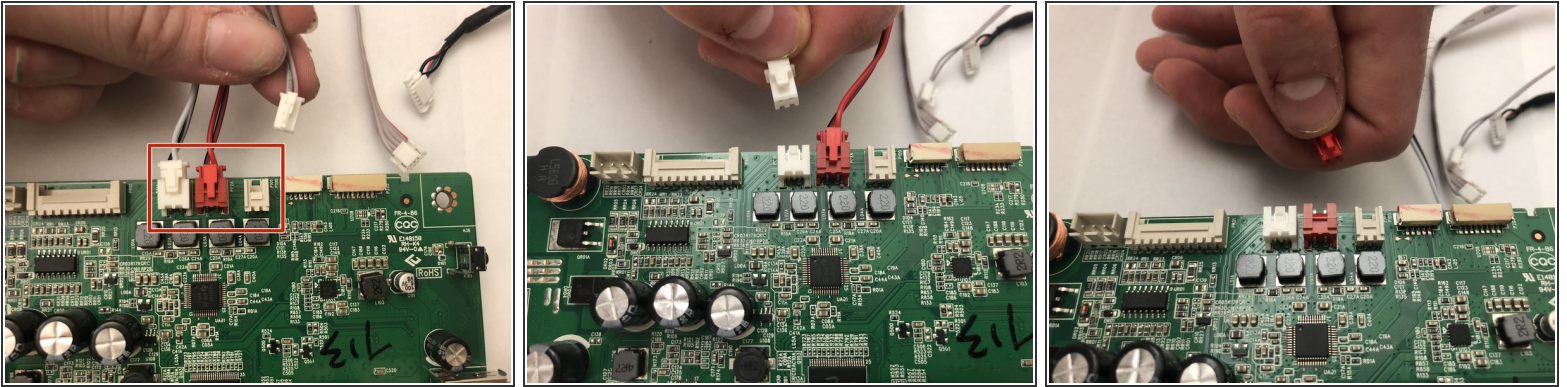
- Remove the mainboard from the television carefully.
- ⚠ Keep in mind that the main board is still attached by several thin wires and should not be tugged.

## Step 14



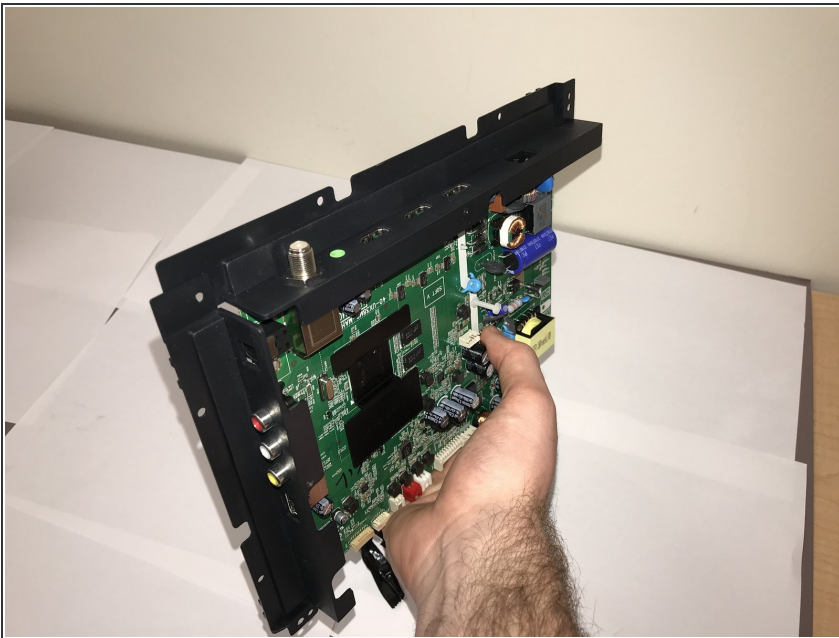
- Remove the two thicker white wires furthest to the right of the red wire from the mainboard.

## Step 15



- Remove the remaining three wires from the mainboard.

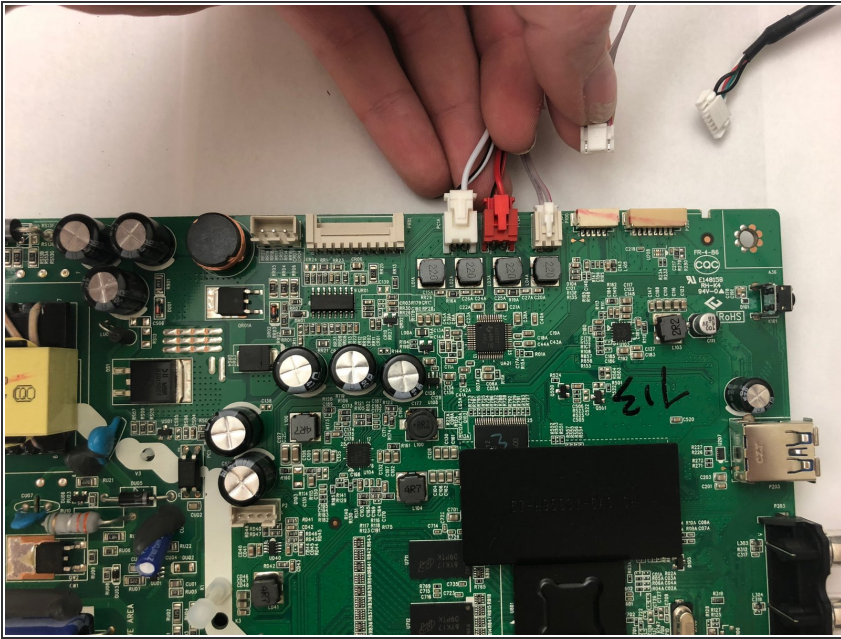
## Step 16



- Carefully remove the mainboard from the television.
- You have now successfully removed the mainboard.

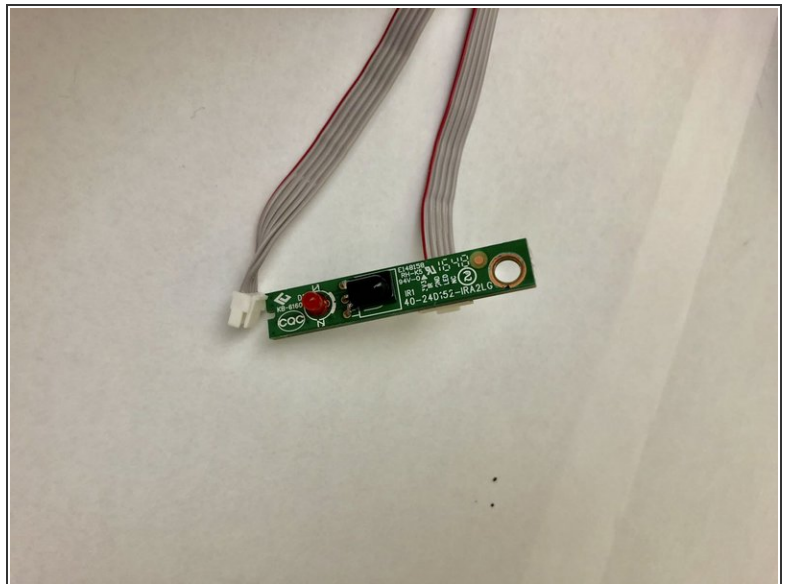
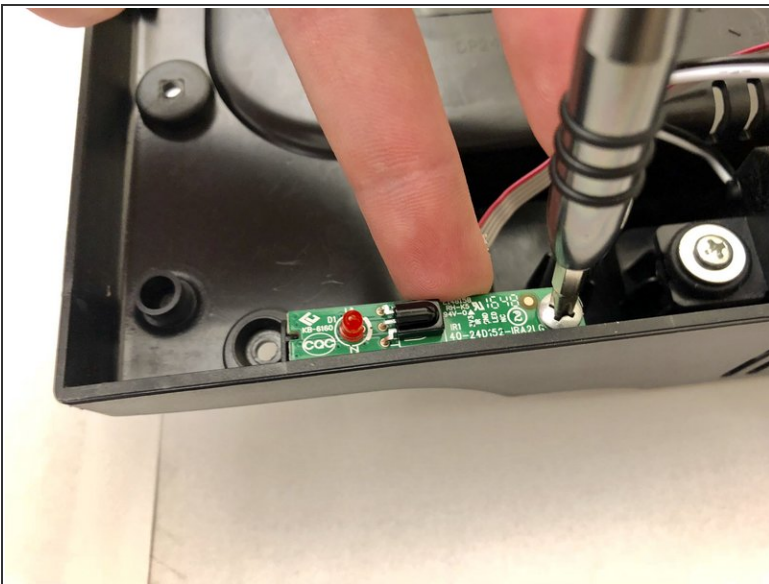


## Step 17 — Infrared Sensor



- Unplug ribbon cable from port on main board that corresponds with IR sensor.

## Step 18



- Unscrew single screw holding IR sensor and remove sensor with ribbon cable.

To reassemble your device, follow these instructions in reverse order.