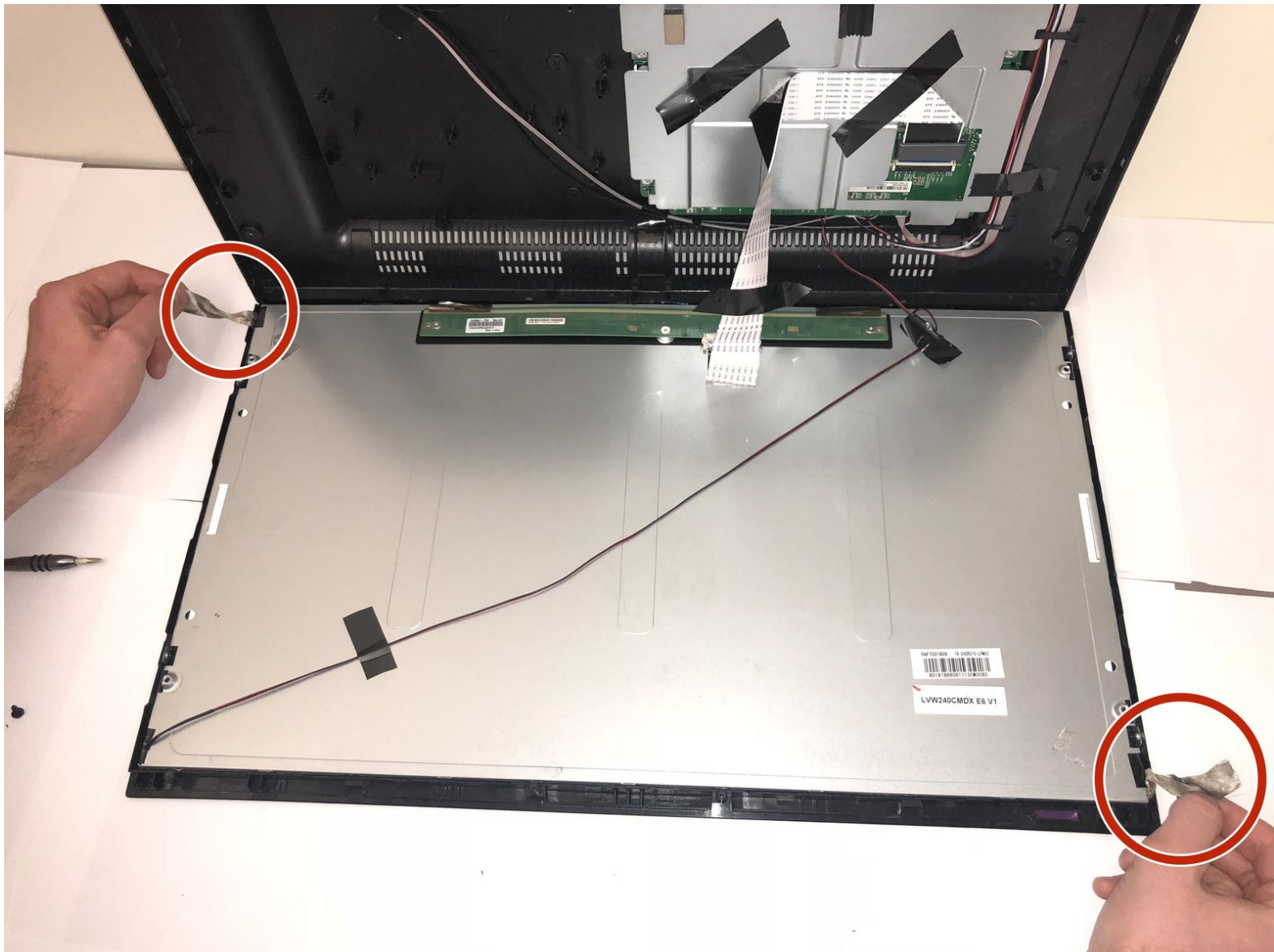




# Insignia NS-24ER310NA17 Screen Replacement

Use this guide to replace the screen in your Insignia NS-24ER310NA17.

Written By: Hannah Berenjfoorosh



# INTRODUCTION

This guide will take you through the process of replacing a broken or unusable screen.



## TOOLS:

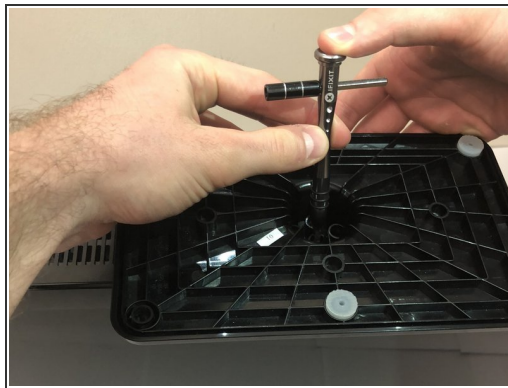
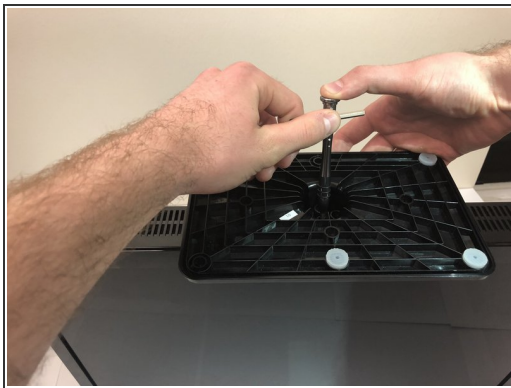
- [Phillips #00 Screwdriver](#) (1)
-

## Step 1 — Insignia NS-24ER310NA17 Disassembly



- Place the TV on a surface so that the screen is facing down and you have access to the back.

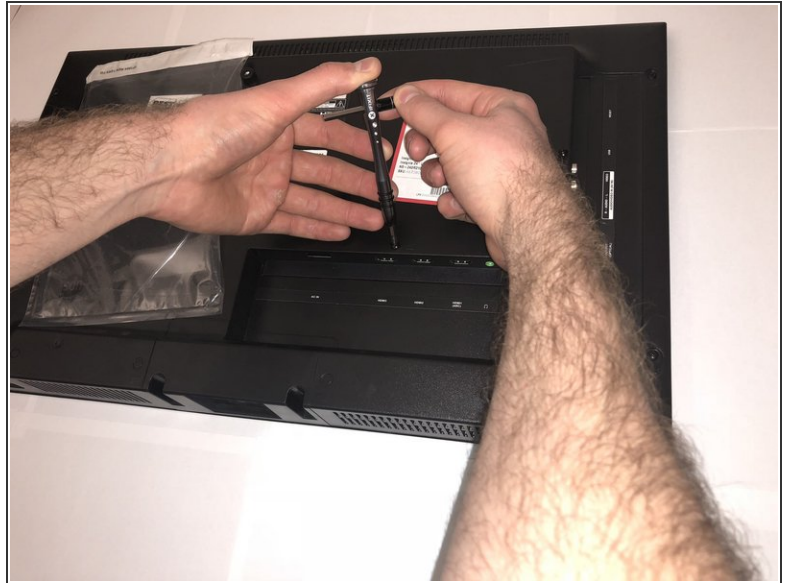
## Step 2



- Flip the TV upside down so that you have access to the TV base.
- Use a Phillips #2 screwdriver to take out the four screws on the bottom of the base.
- Remove the base from the frame.



### Step 3



- Flip the TV back so that the screen is face down
- Use the Phillips 00 Screwdriver to remove all the Phillips Head Screws from the the backside of the TV.

### Step 4



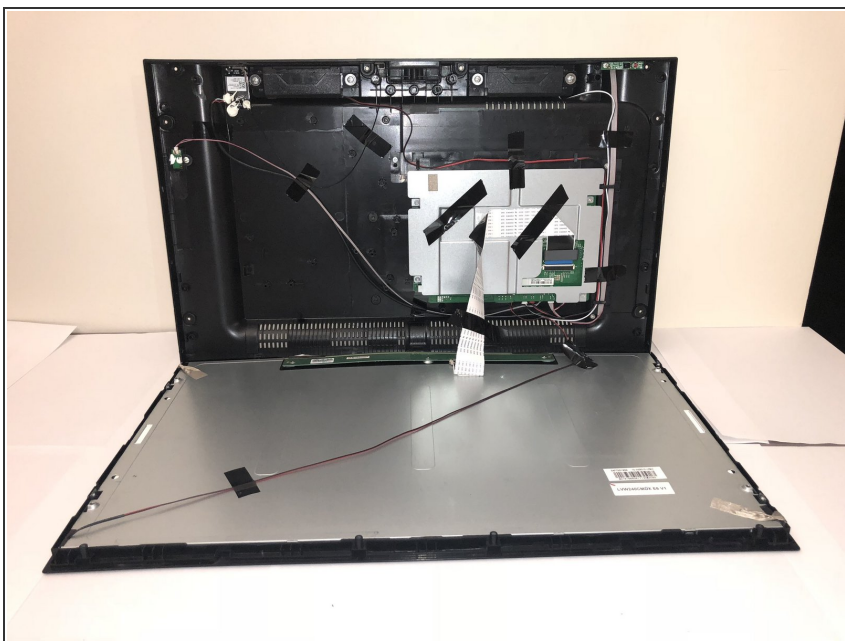
- Flip the TV so that the top of the TV is on your flat surface.
- Gently pry apart the front and back of Tv from one another. The two sides of your TV should be easily pulled apart since there are no longer any screws holding it together.

## Step 5



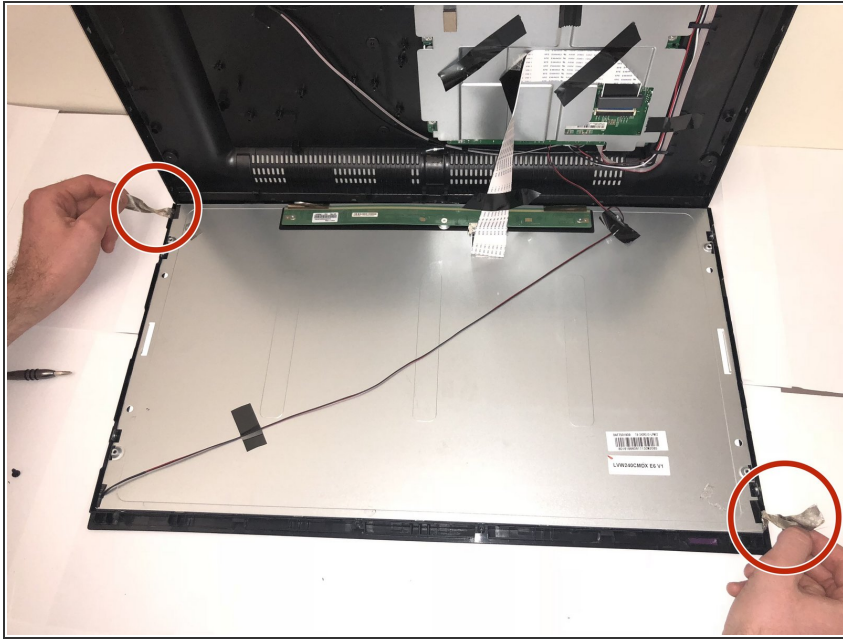
- There are wires still keeping the two sides of TV together, so remove all the pieces of tape to detach the wires from sides.

## Step 6



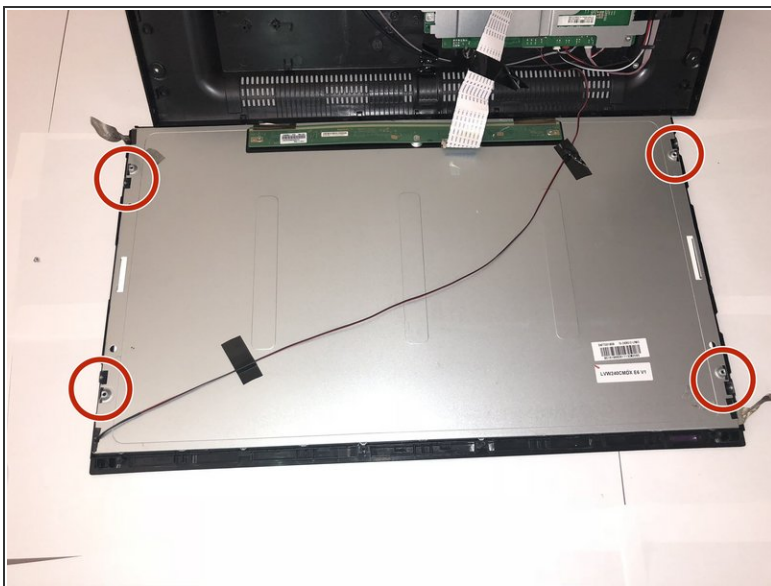
- You should now be able to pry apart your TV so that you have a clear view of the inside on both sides.

## Step 7 — Screen



- Remove the tape that is holding the silver rectangular piece from the house.

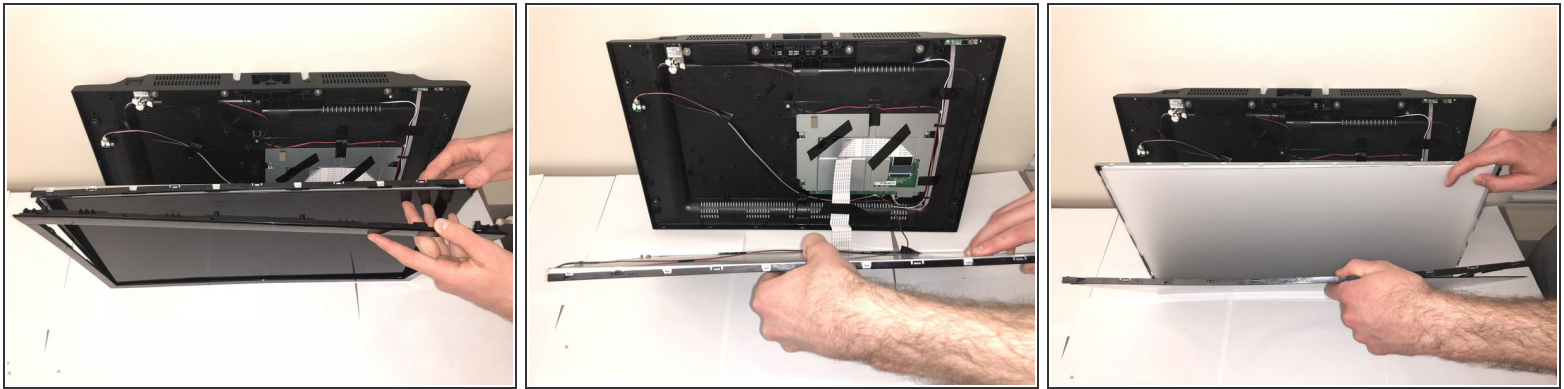
## Step 8



- Using the Phillips 00 Screwdriver, remove the screws that are also holding the silver rectangular piece to the house.

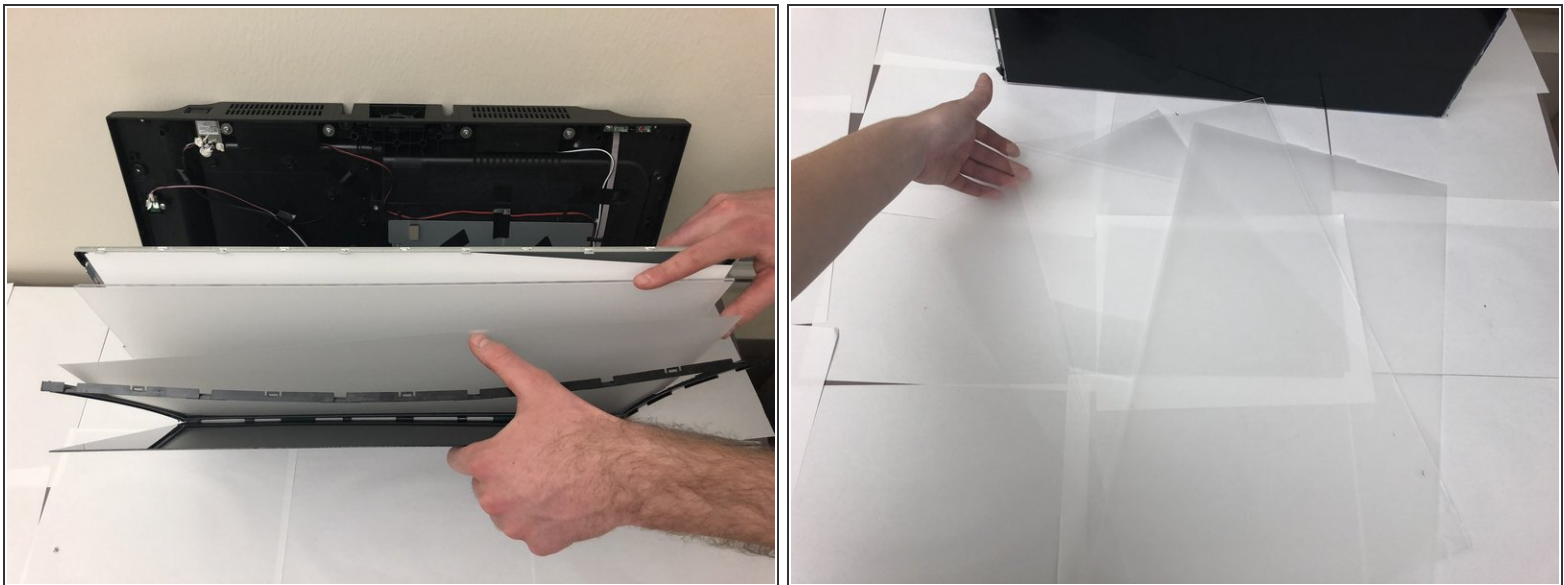


## Step 9



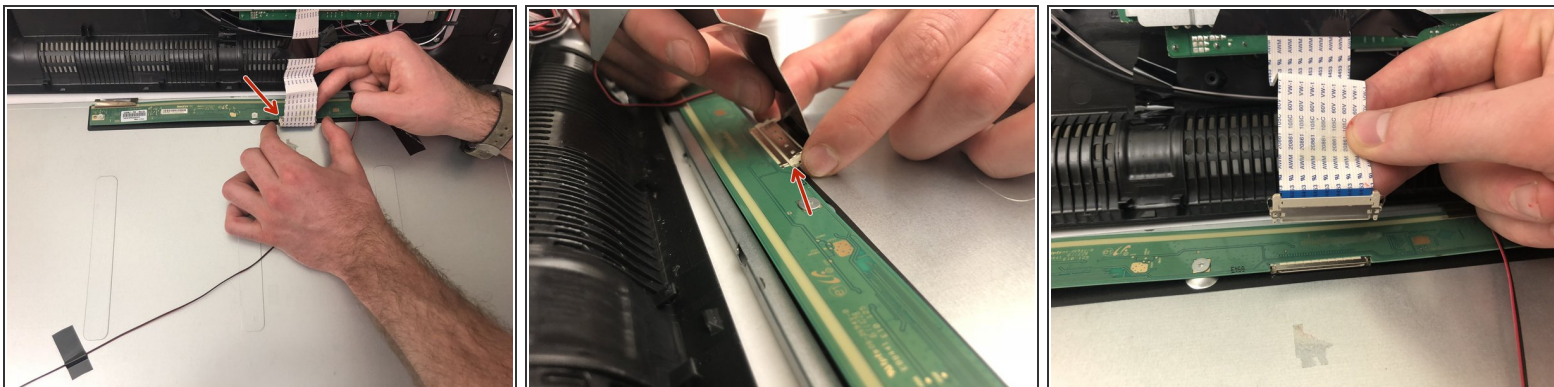
- Remove the plastic casing from the glass screen.
- Then carefully remove metal backing from glass screen and separate the layer of plastic from the glass screen.

## Step 10



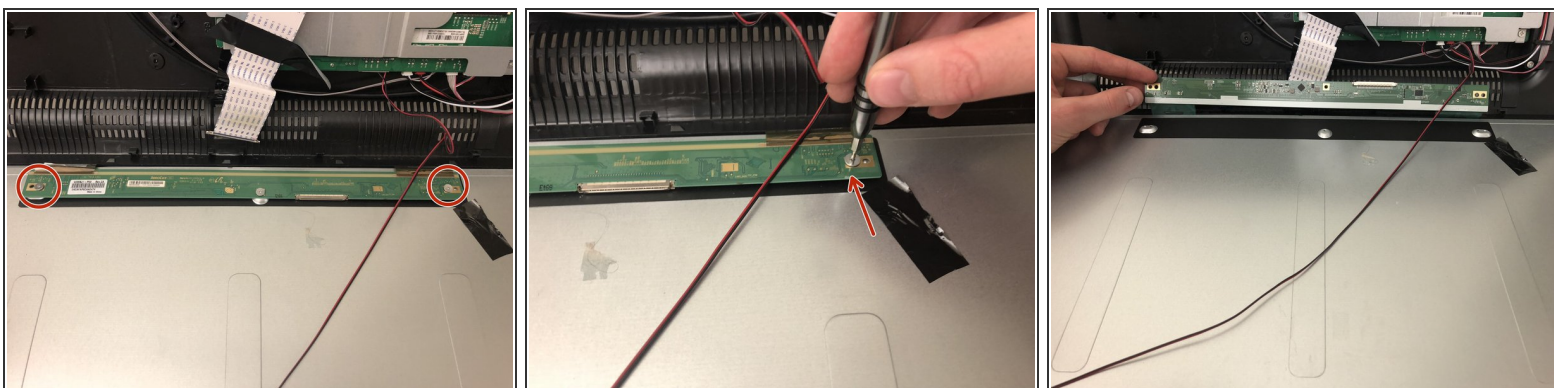
- Separate plastic screen protector layers from both the backing and glass screen.
- (second picture provides image of what the plastic screen protectors look like)

## Step 11



- Find the display board and unplug white ribbon cord from board.
- Squeeze both sides of plug to release cord.

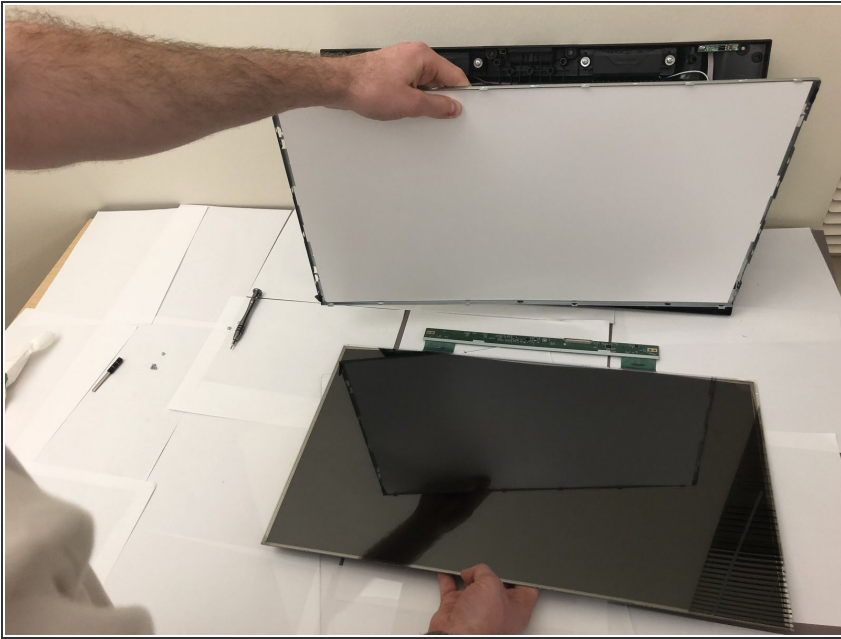
## Step 12



- Using same screwdriver, unscrew the screws that are on the green display board.
- Separate the green display board from its metal backing.



## Step 13



- All cables connecting screen to frame are now detached. You are now ready to pull apart and separate the screen.

To reassemble your device, follow these instructions in reverse order.