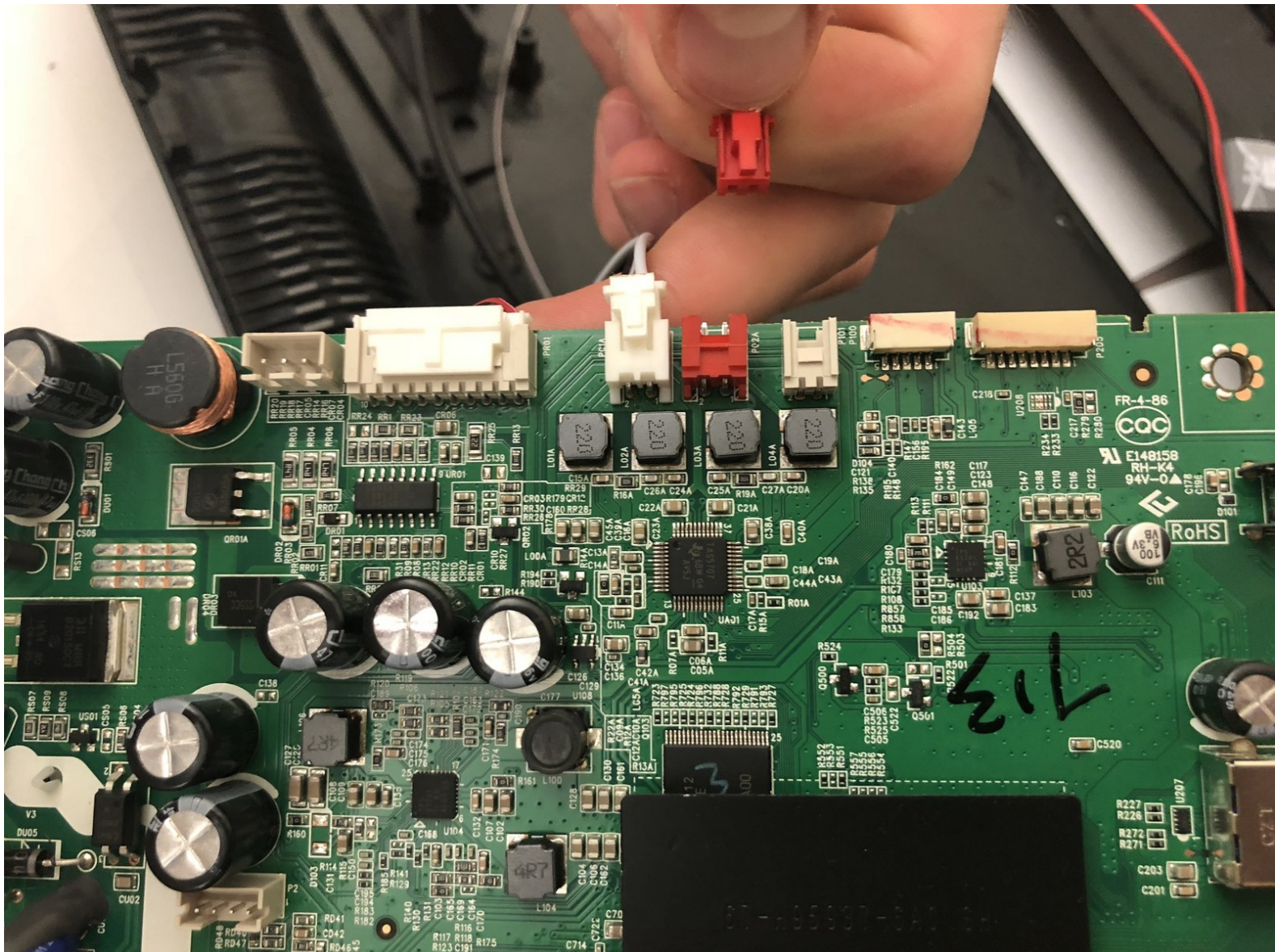




Insignia NS-24ER310NA17 Speaker Replacement

Use this guide to replace the speaker in your Insignia NS-24ER310NA17.

Written By: Hannah Berenjfoorosh



INTRODUCTION

This guide will take you through the process of replacing speakers in an Insignia TV.



TOOLS:

- [Phillips #00 Screwdriver](#) (1)



PARTS:

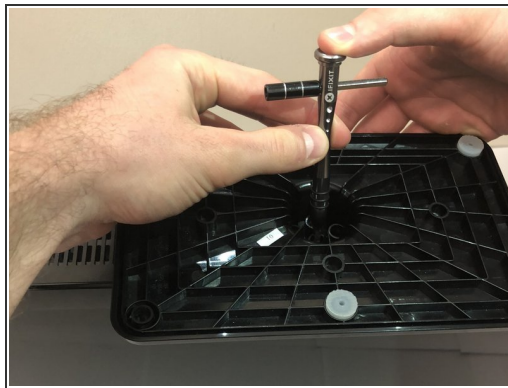
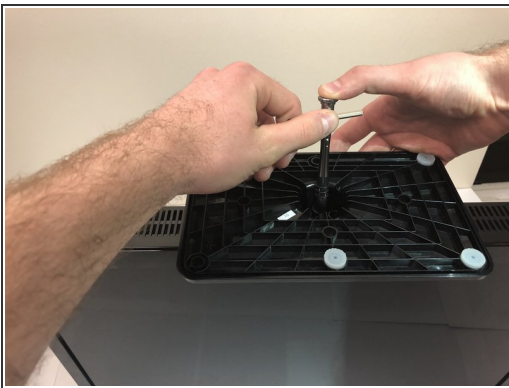
- [42-WDF08D-JH1AG Speaker](#) (1)

Step 1 — Insignia NS-24ER310NA17 Disassembly



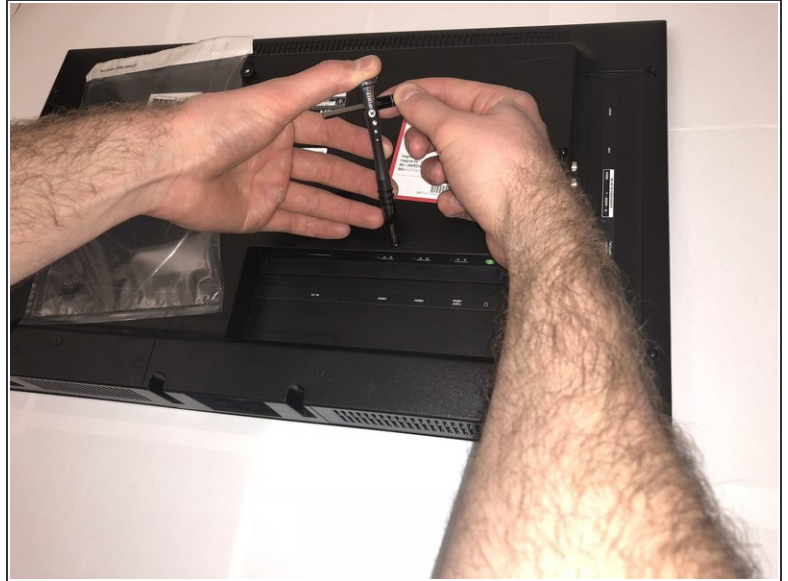
- Place the TV on a surface so that the screen is facing down and you have access to the back.

Step 2



- Flip the TV upside down so that you have access to the TV base.
- Use a Phillips #2 screwdriver to take out the four screws on the bottom of the base.
- Remove the base from the frame.

Step 3



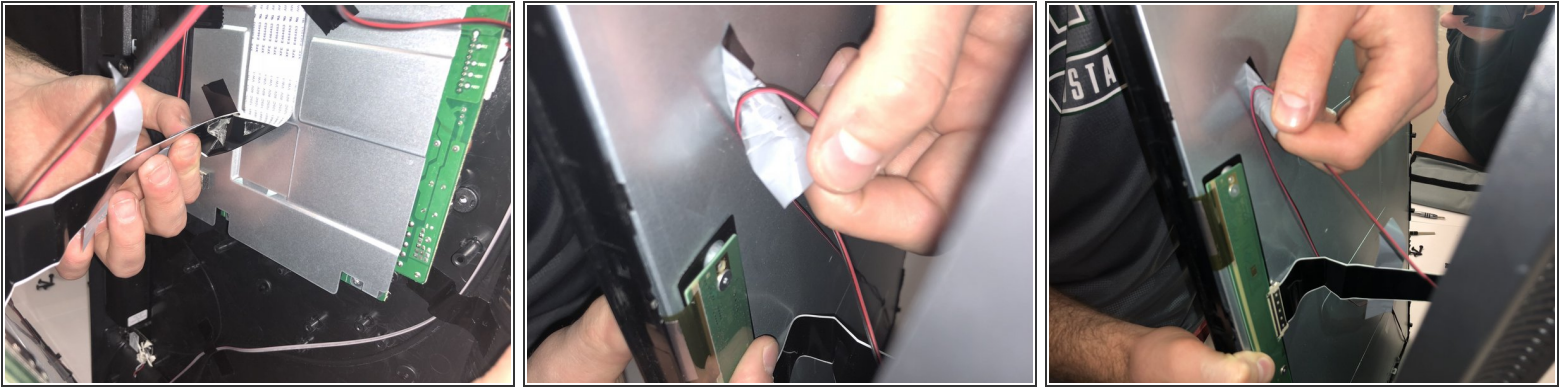
- Flip the TV back so that the screen is face down
- Use the Phillips 00 Screwdriver to remove all the Phillips Head Screws from the the backside of the TV.

Step 4



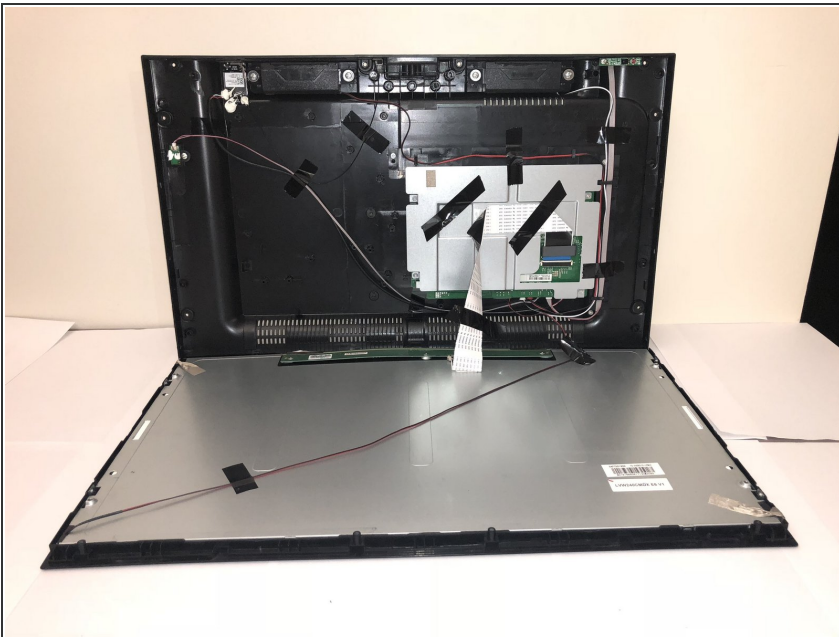
- Flip the TV so that the top of the TV is on your flat surface.
- Gently pry apart the front and back of Tv from one another. The two sides of your TV should be easily pulled apart since there are no longer any screws holding it together.

Step 5



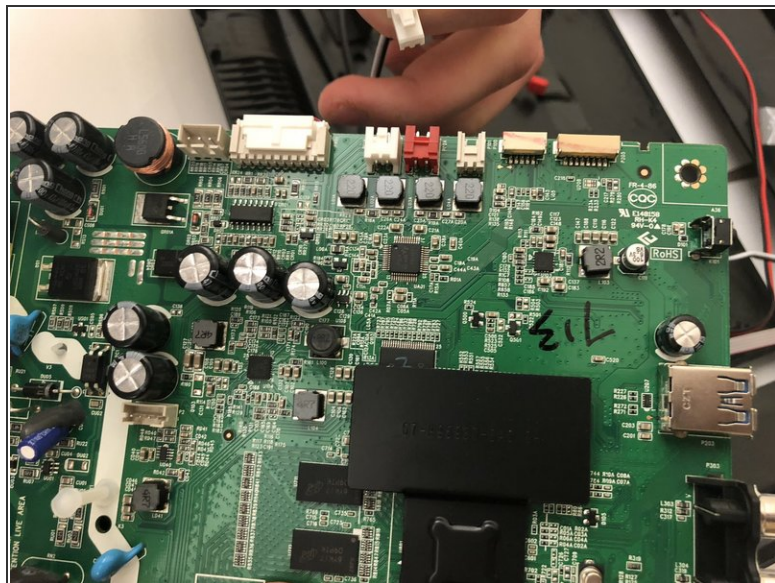
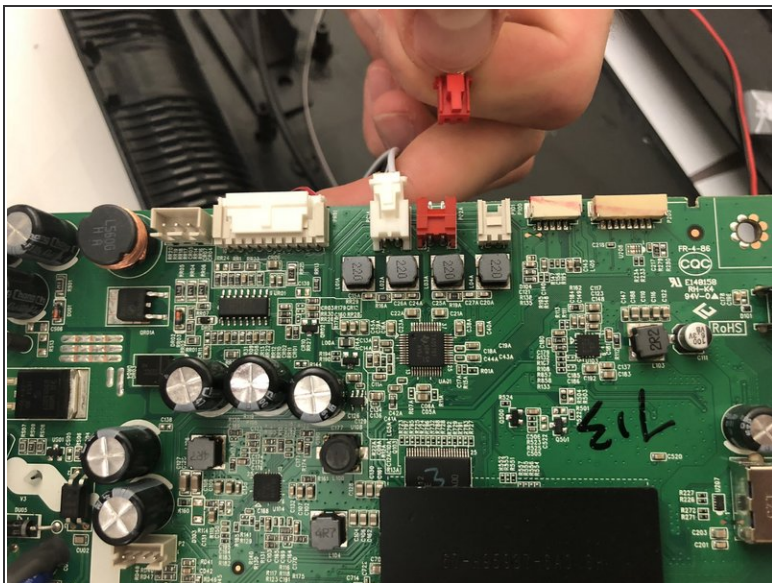
- There are wires still keeping the two sides of TV together, so remove all the pieces of tape to detach the wires from sides.

Step 6



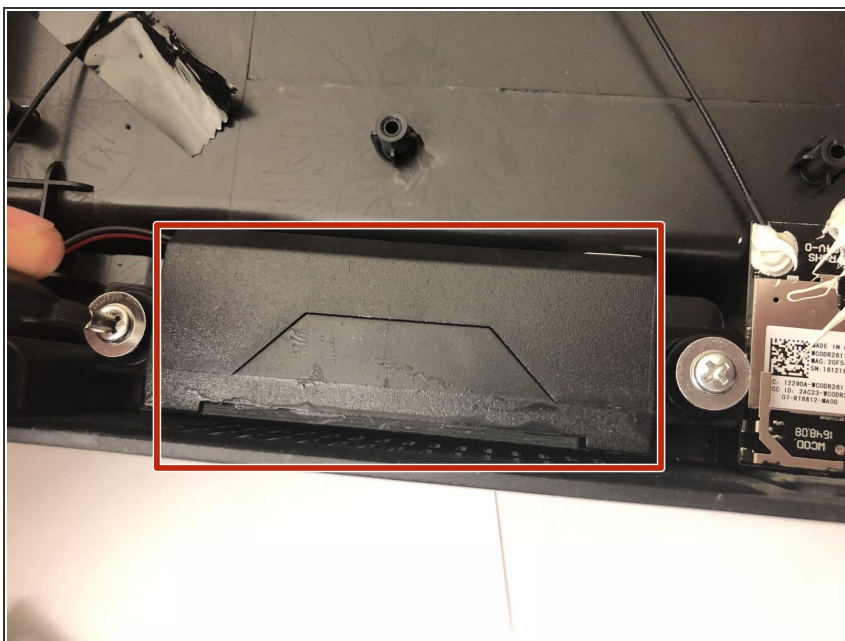
- You should now be able to pry apart your TV so that you have a clear view of the inside on both sides.

Step 7 — Speaker



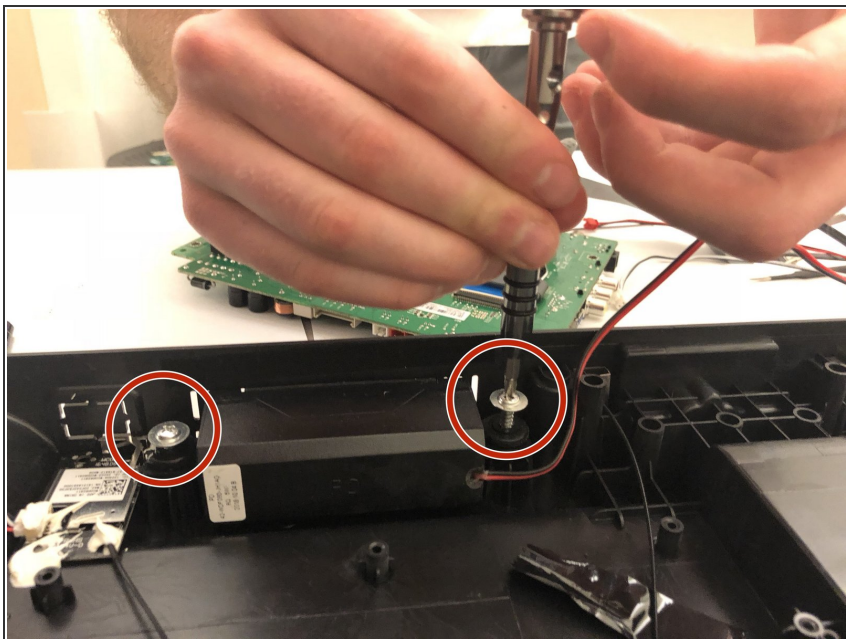
- Unplug the red (right speaker) cord from the motherboard.
- Unplug the white (left speaker) cord from the motherboard.

Step 8



- Start by locating speaker in bottom of back panel.

Step 9



- Remove screws on both sides holding the speaker in place.

Step 10



- Pull the speaker out of its casing, and repeat for the process for the other speaker.

To reassemble your device, follow these instructions in reverse order.