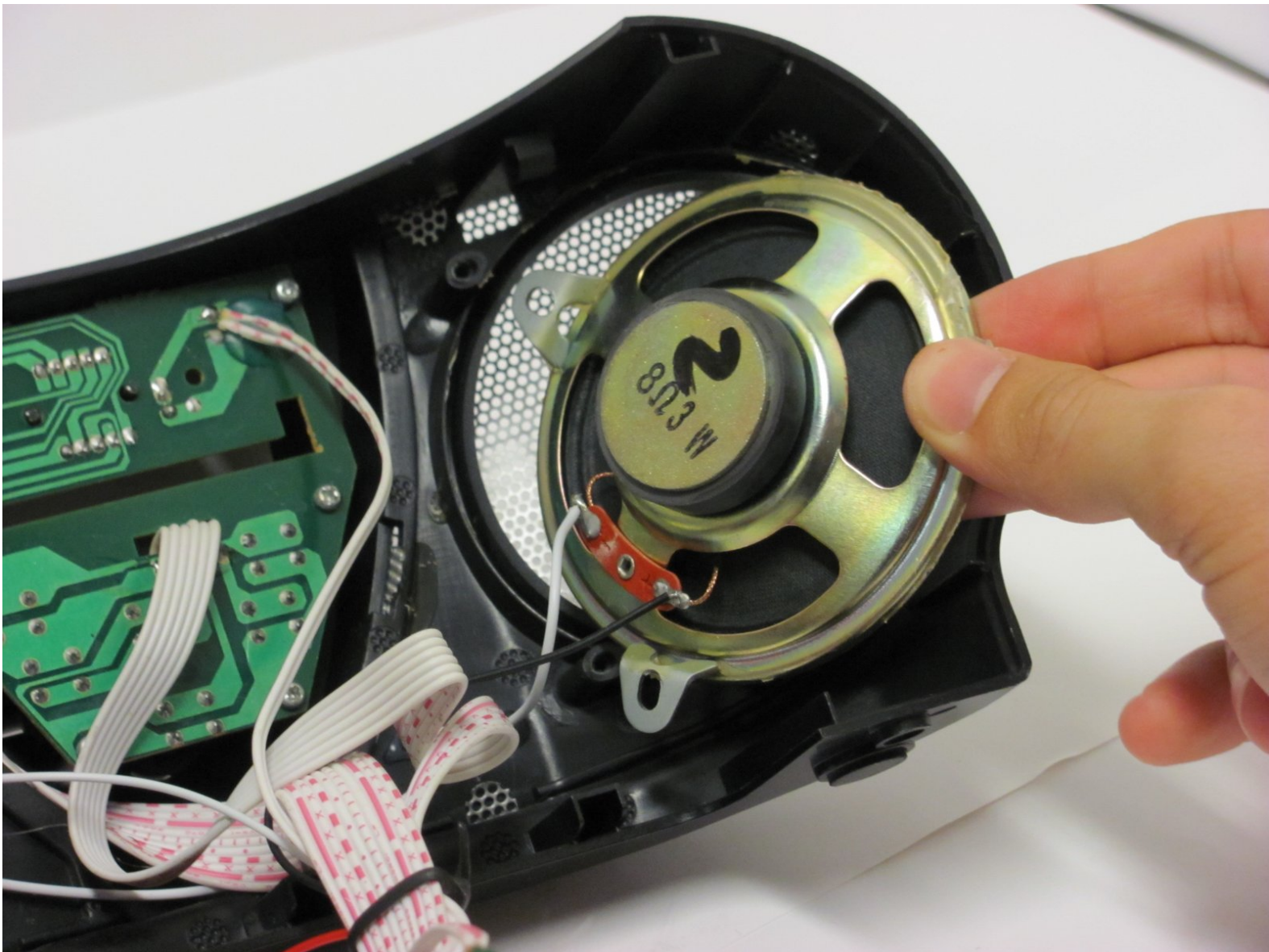




Insignia NS-B2110 Speaker Replacement

Replace your busted, blown-out speakers to bring life back to your boombox.

Written By: Jacob Phillips



INTRODUCTION

In this guide you will be taking apart your boombox to reach the speakers from the inside. These step-by-step instructions will show you how to reach the speakers, how to remove them, and how to install your new speakers. This guide requires soldering, so make sure you have a soldering iron handy and know how to use one. A simple guide to soldering can be found [here](#).



TOOLS:

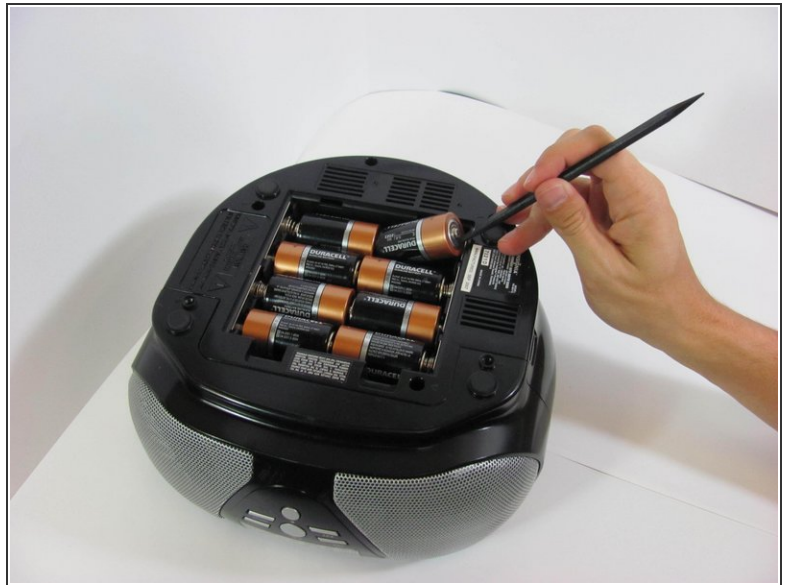
- [Phillips #00 Screwdriver](#) (1)
- [Spudger](#) (1)
- [Phillips #2 Screwdriver](#) (1)
- [Phillips #2 Screwdriver](#) (1)
- [iFixit Opening Tools](#) (1)
- [Soldering Iron](#) (1)

Step 1 — Battery



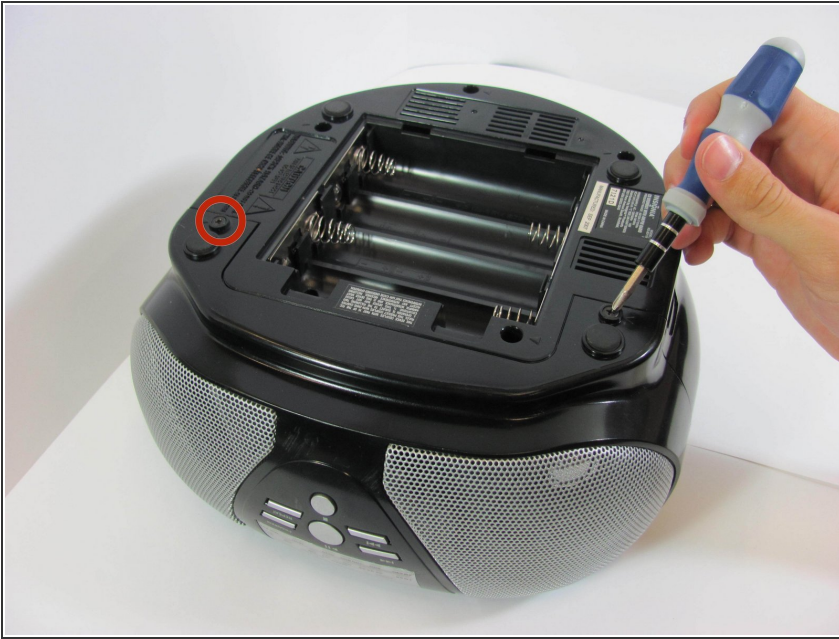
- Flip the stereo so the CD opening is face down.
- With two fingers, pinch the tabs and lift up to open the battery protection cover.

Step 2



- Using a spudger or your fingers, push up against the positive end of the battery. Once it is loose, lift the battery out.
- Repeat until all eight batteries are removed.
- ☑ Make sure the batteries are facing the right direction. If the device does not turn on, you may have the batteries in the opposite orientation.

Step 3 — Bottom Panel



- With a Phillips #2 screwdriver, remove two 2mm screws.

Step 4




- Using a long Phillips #2 screwdriver, remove one 6mm screw located inside the battery compartment.
- Use the same screwdriver to remove four more 6mm screws along the outside of the case.

Step 5

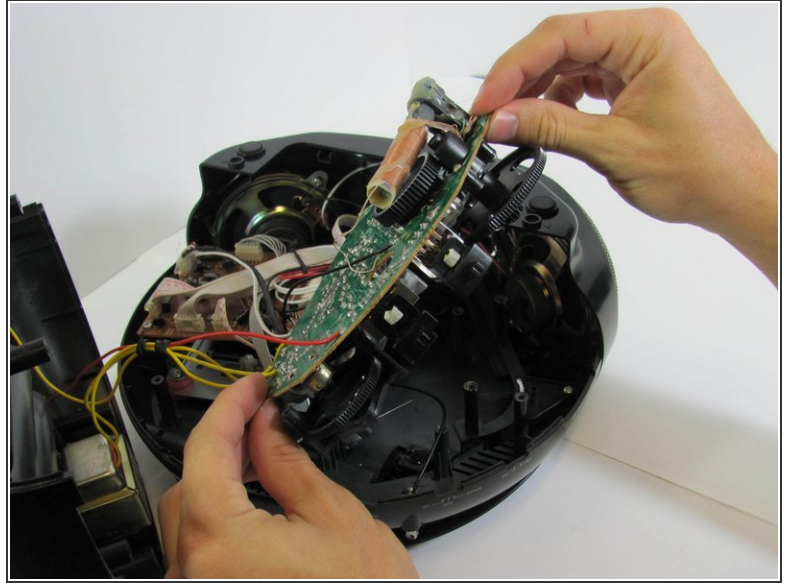
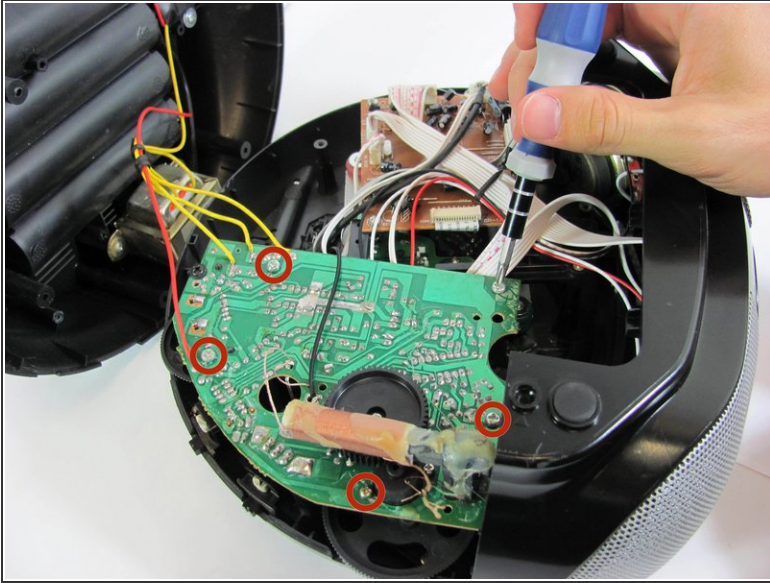


- With a plastic opening tool, wedge the bottom shell from the main speaker face along the edge.

 The bottom cover has two red and two yellow wires attached to it that you don't want to pull off. Handle the casing carefully.

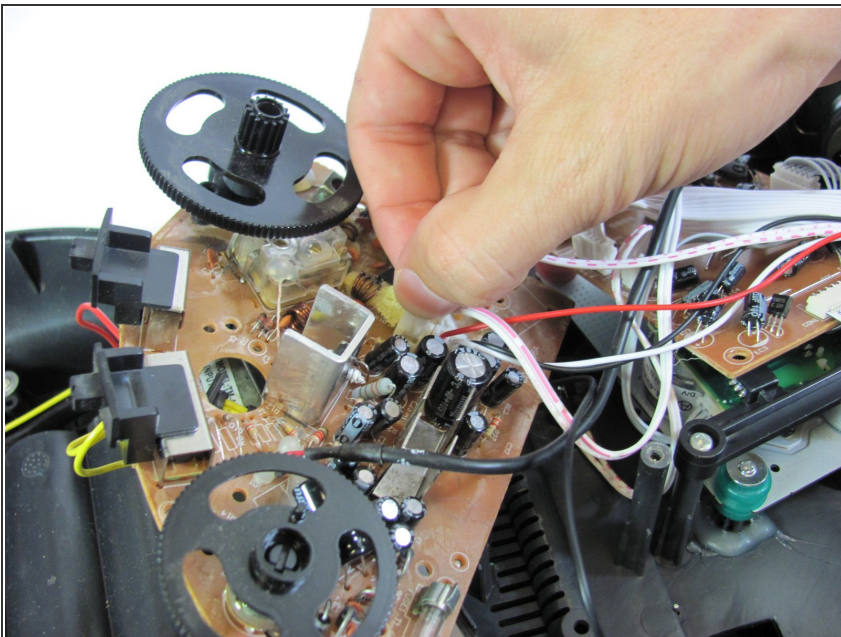
- Once the pieces are separated, pull them apart and place the bottom cover aside, near the stereo.

Step 6 — Internal Components



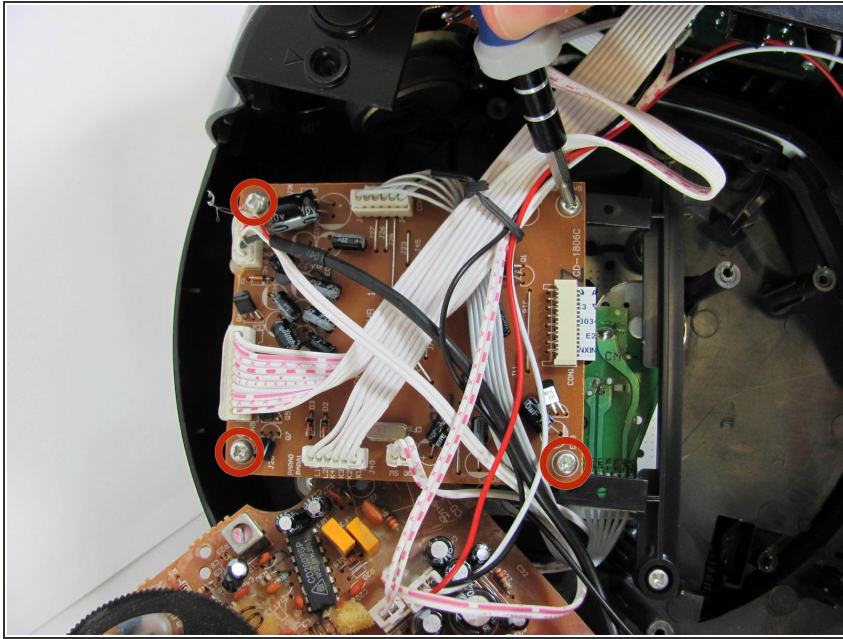
- With a Phillips #2 screwdriver, remove five 5mm screws from the "quarter circle" circuit board.
- ⚠ More wires! Handle the circuit board carefully and take caution not to stretch the red and white wires connected the board to the other components.
- Remove the green quarter circle circuit board and place to the side.

Step 7



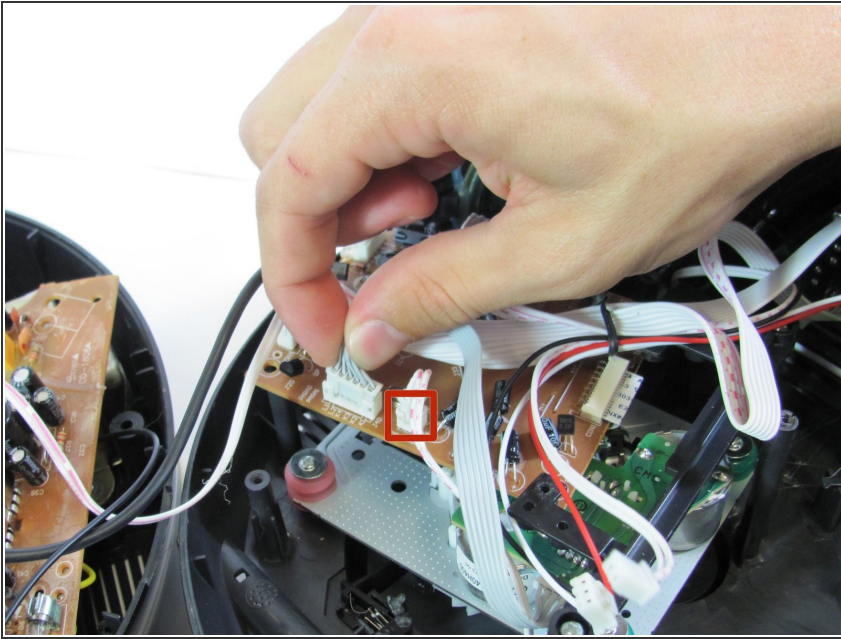
- On the brown side of the quarter circle circuit board, remove the two white ribbon cables with pink stripes attached to a plastic connector. To do this, pinch the tabs with your hands while pulling outward on the connector.

Step 8



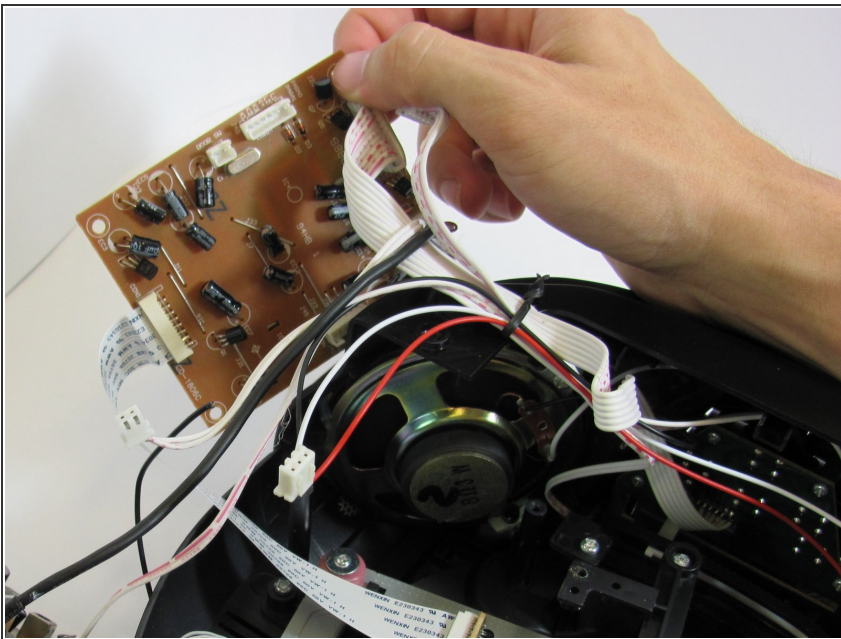
- With a Phillips #2 screwdriver, remove four 6mm screws from the rectangular circuit board.

Step 9



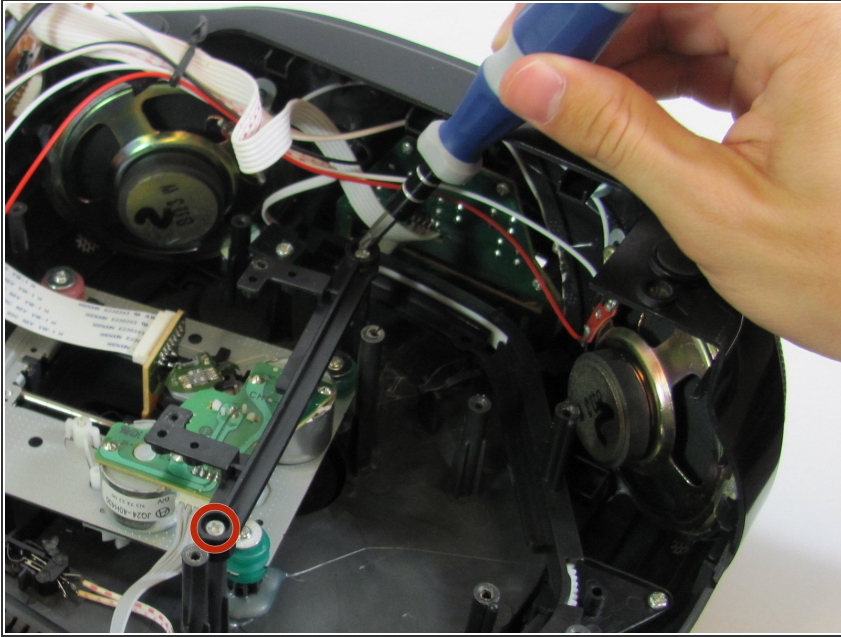
- Remove the two white ribbon cables attached to white plastic connectors from the circuit board by pinching the tabs with your hands and pulling outward on the connector.

Step 10



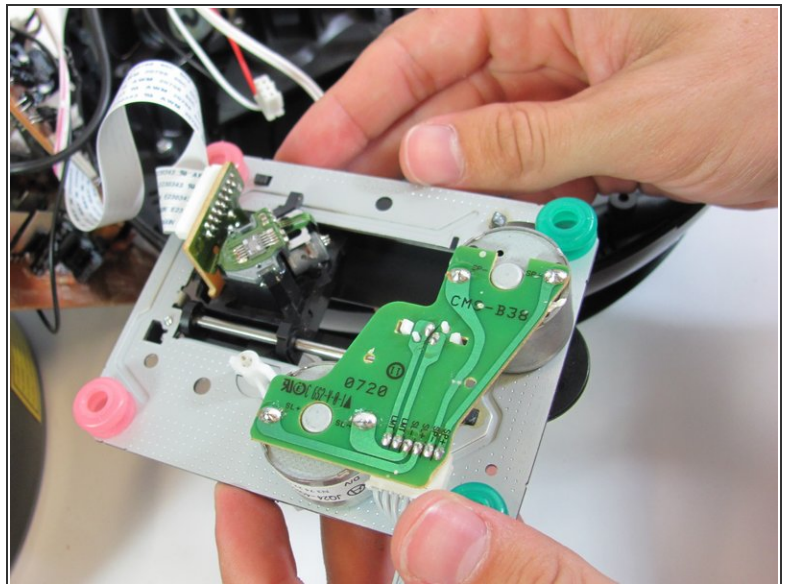
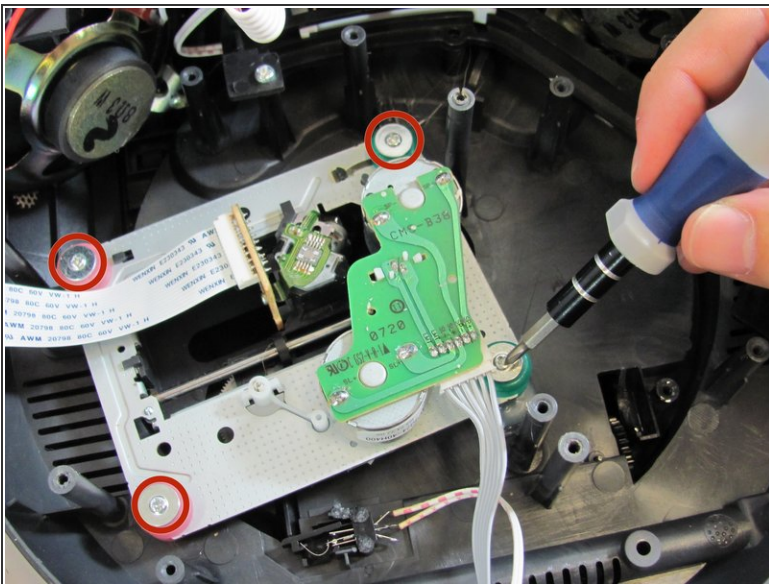
- ⚠ Red and white wires are attached to this board as well. Once again, be careful not to stretch these.
- Remove the rectangular circuit board and place it to the side.

Step 11



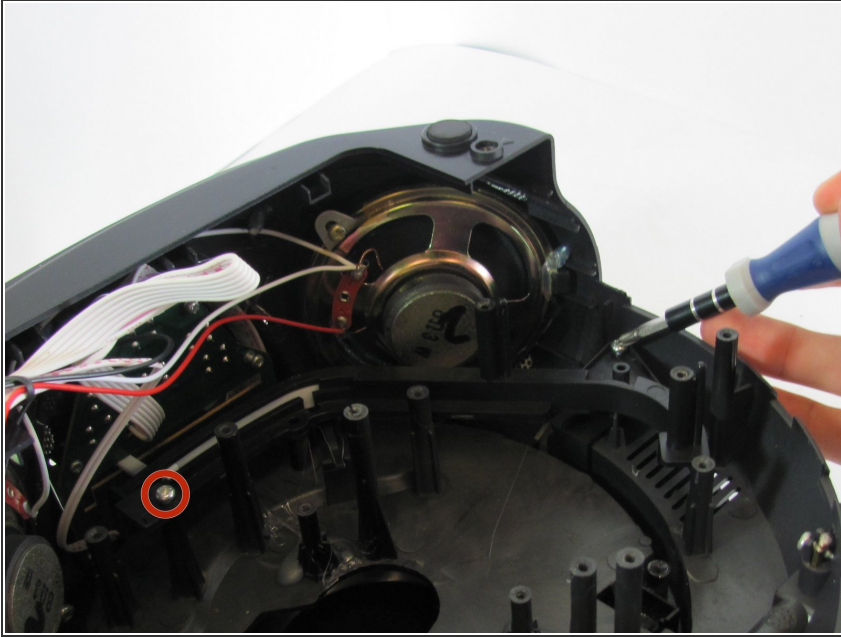
- With a Phillips #2 screwdriver, remove two 5mm screws from the black plastic frame which previously held up the rectangular circuit board.
- Remove the black plastic frame.

Step 12



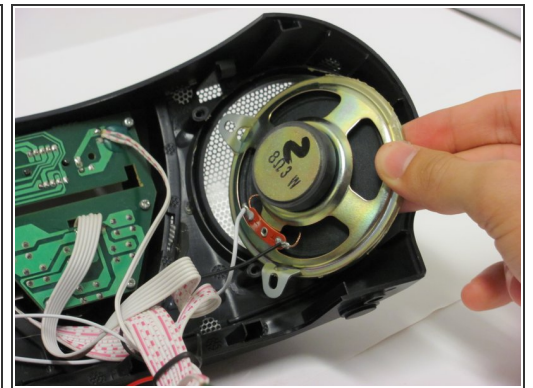
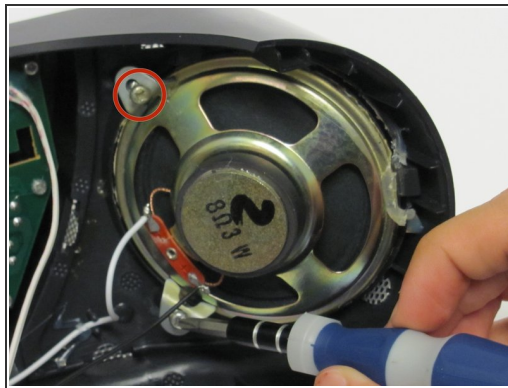
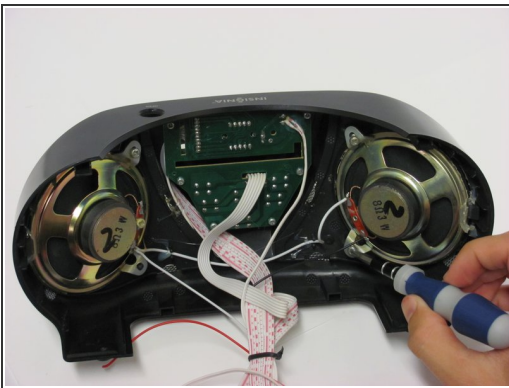
- With a Phillips #1 screwdriver, remove four 3mm screws from the silver metal circuit board.
- ⚠ This board has two white ribbons attached to it. Once again, be careful not to stretch these.
- Remove and place the metal circuit board to the side.

Step 13



- With a Phillips #2 screwdriver, remove the two 3mm screws from the black plastic tuner frame.

Step 14 — Speaker

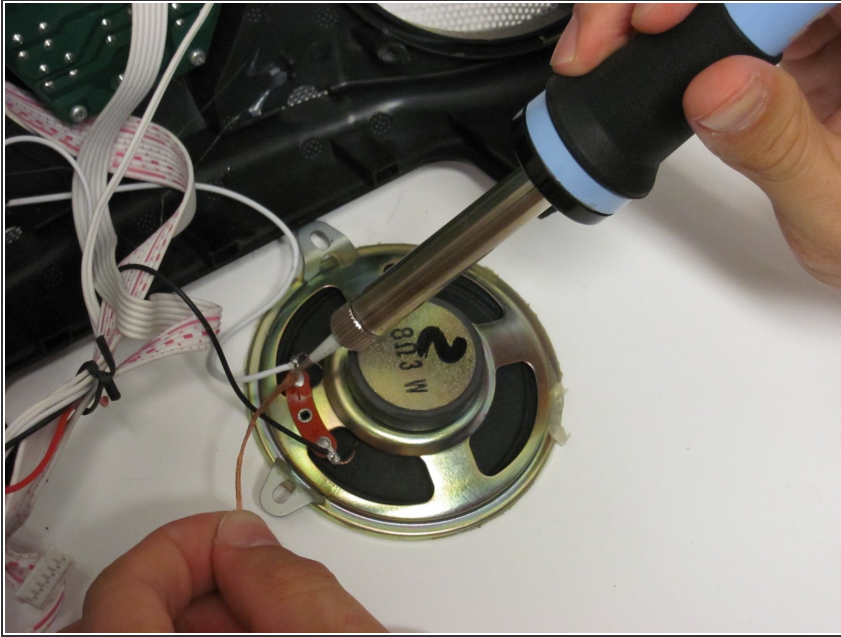


- Using a Phillips #2 Screwdriver, remove two 5mm screws from the speaker.

⚠ The edges of the speaker are very thin and sharp and could cut your finger.

- The speaker will have a light coating of glue to hold it in place. A little force from your fingers will pull it right out. Remove the speaker and set it face-down on the table.

Step 15



- Remove the solder from the two black and white wires connected to the speaker.

To reassemble your device, follow these instructions in reverse order.