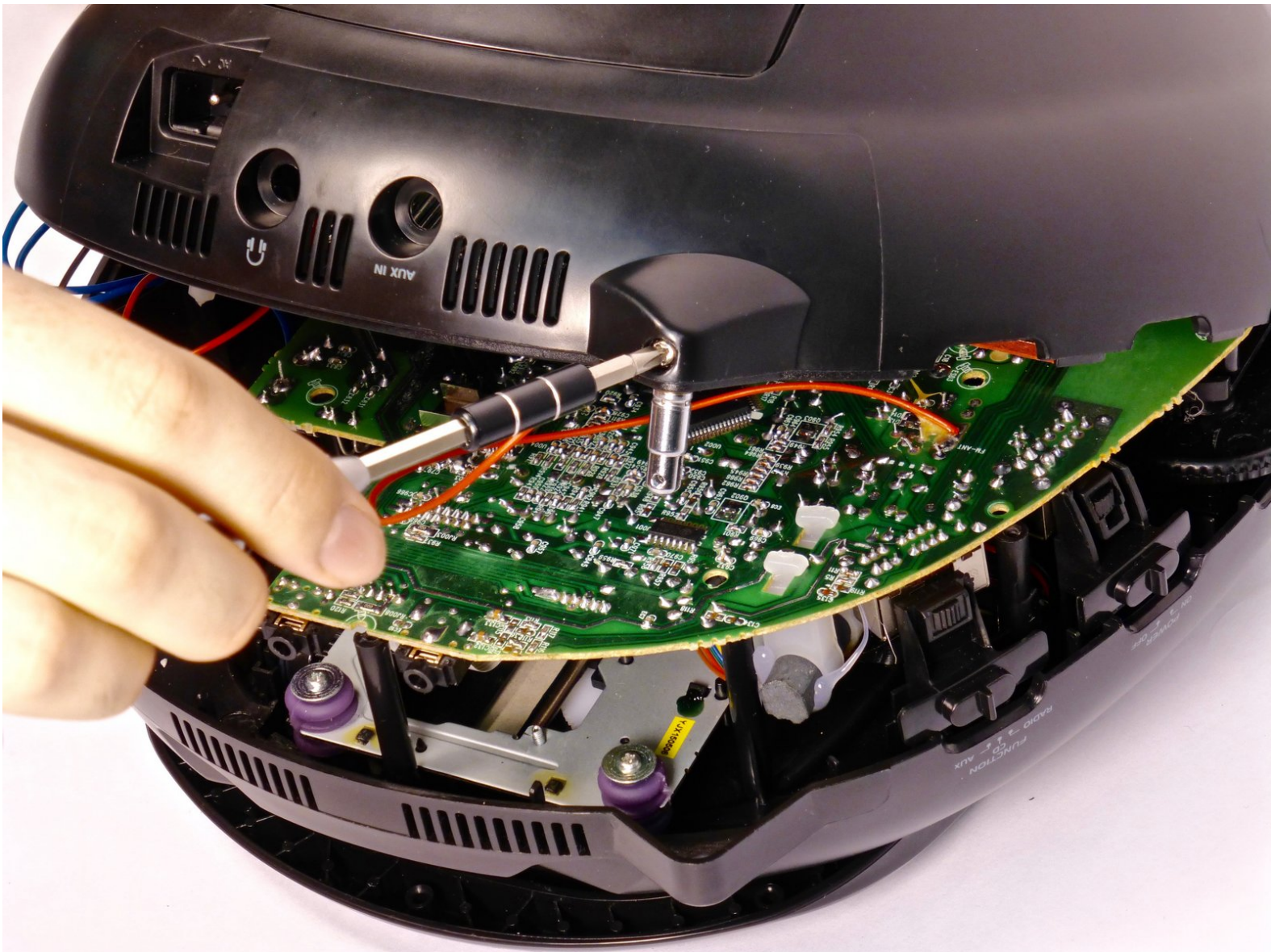




Insignia NS-B4111 Antenna Base Replacement

Prerequisite Only

Written By: Kristin Yoshioka

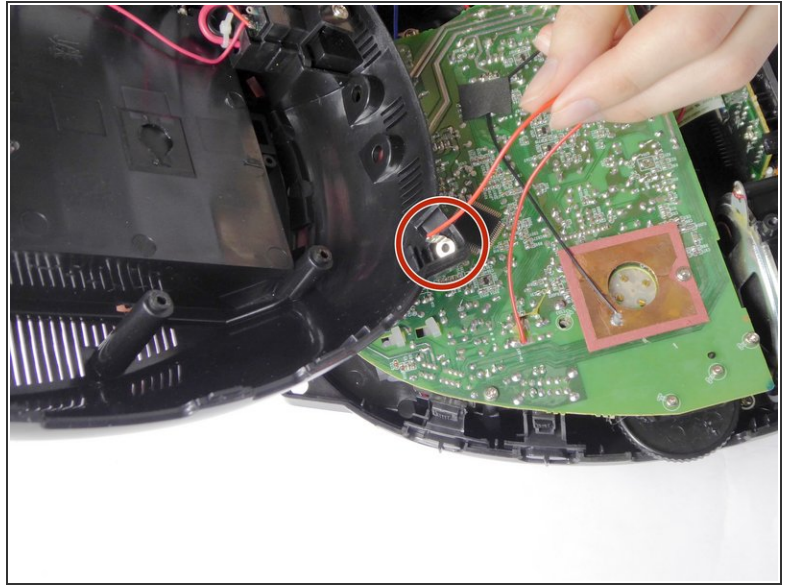
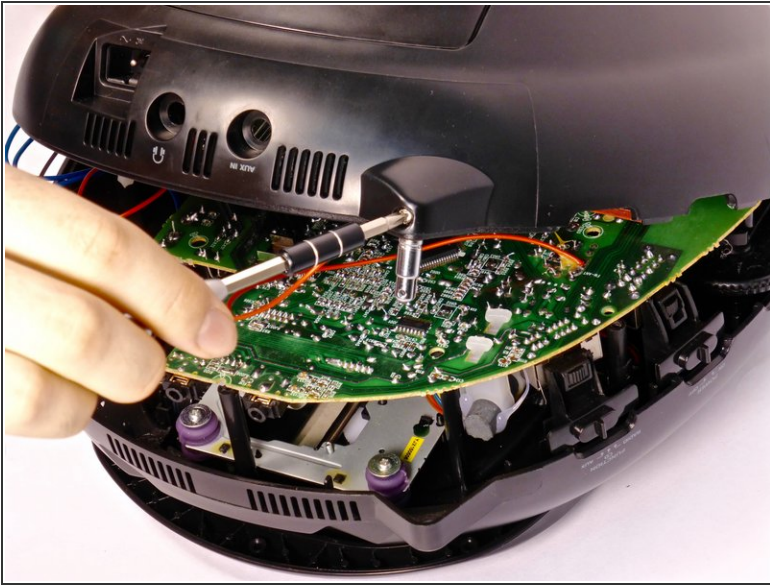




TOOLS:

- [64 Bit Driver Kit](#) (1)
-

Step 1 — Antenna Base



- Remove the 10mm chrome screw from the antenna base with the Phillips PH1 screwdriver. Remove the antenna base from the casing.
- This red wire will now be loose and you can move it out of the antenna base slot.

To reassemble your device, follow these instructions in reverse order.