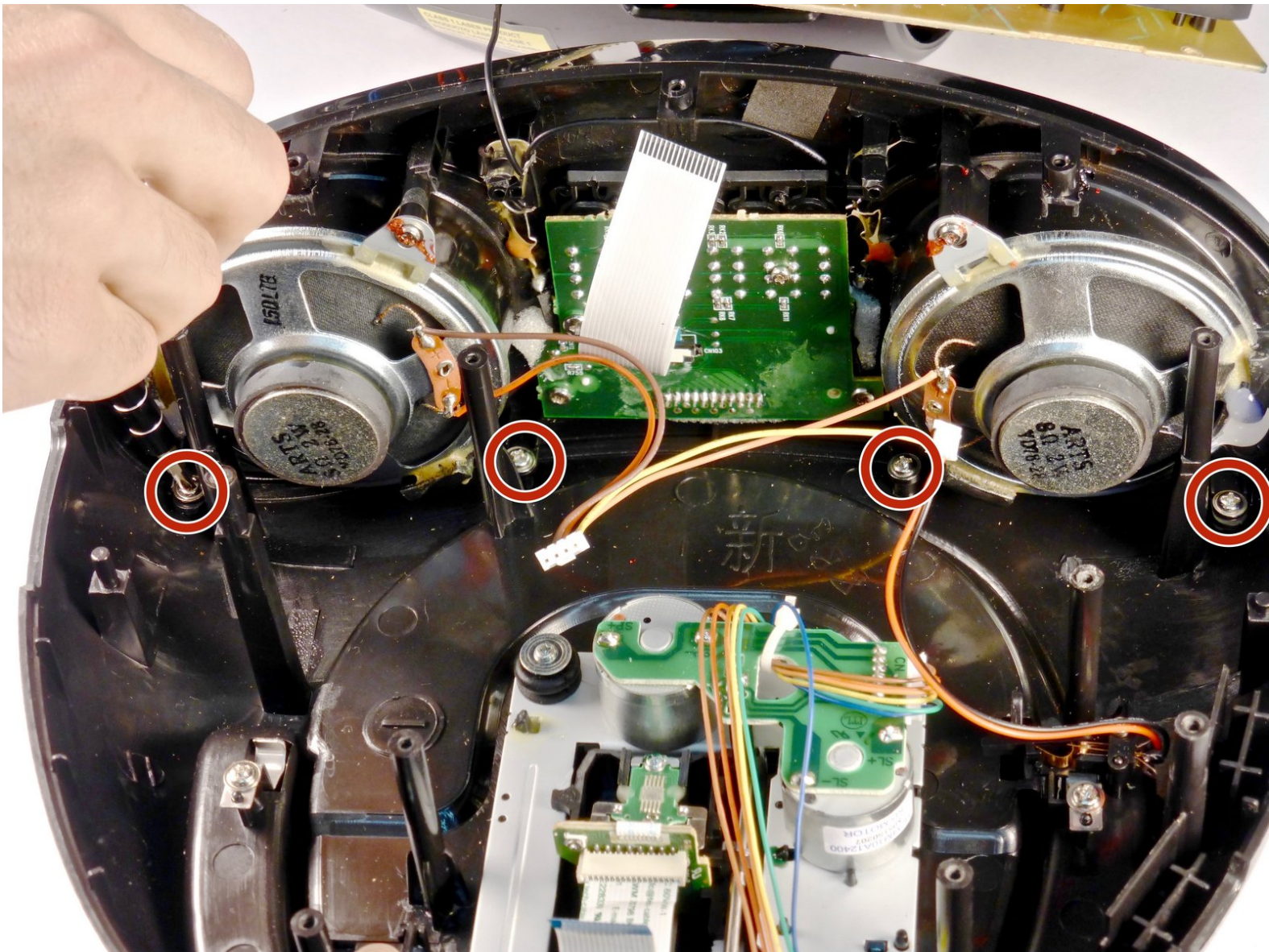




# Insignia NS-B4111 Front Panel Replacement

Prerequisite Only.

Written By: Kristin Yoshioka

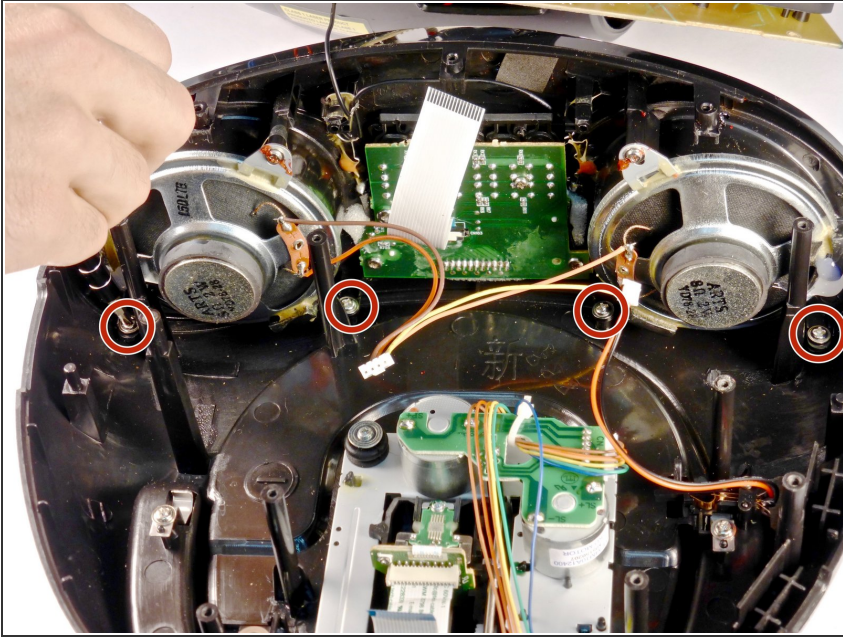




## TOOLS:

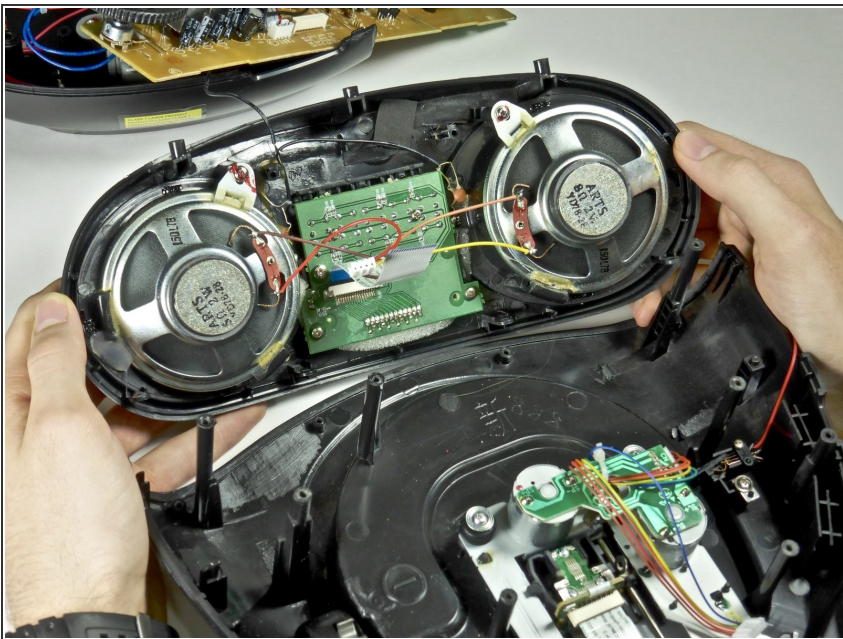
- [64 Bit Driver Kit](#) (1)
-

## Step 1 — Front Panel



- Remove the four 8.5mm chrome screws from the front panel with the Phillips PH1 screwdriver.

## Step 2



- Remove the front panel from the top casing.

To reassemble your device, follow these instructions in reverse order.