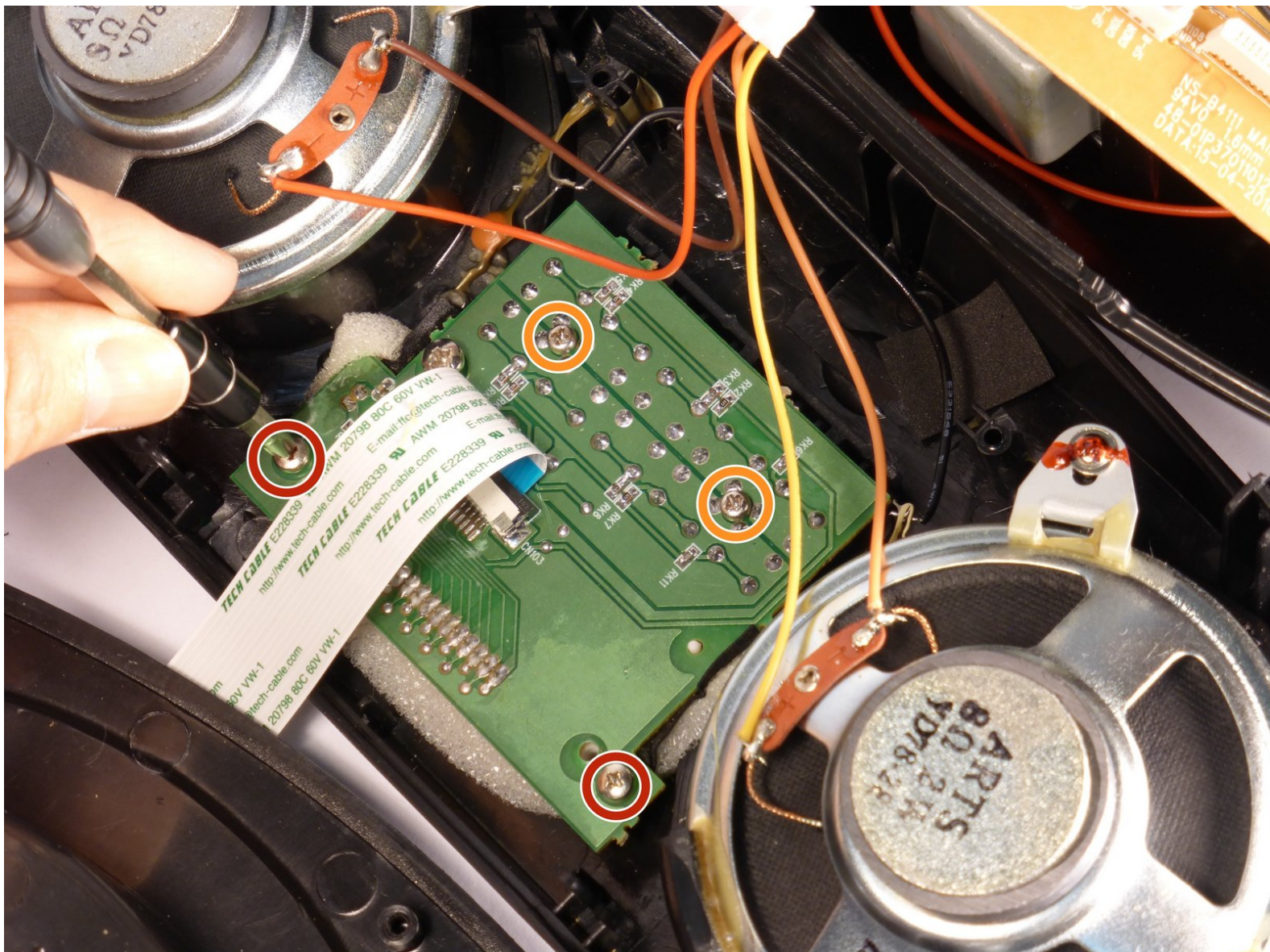




# Insignia NS-B4111 Switchboard Replacement

Replace your NS-B4111 front panel board to fix the screen or buttons.

Written By: Sabuk Ketvirtis



# INTRODUCTION

This guide will teach you how to replace your switchboard incase any buttons on your device aren't working.



## TOOLS:

- [Soldering Iron](#) (1)
  - [64 Bit Driver Kit](#) (1)
-



## Step 1 — Battery



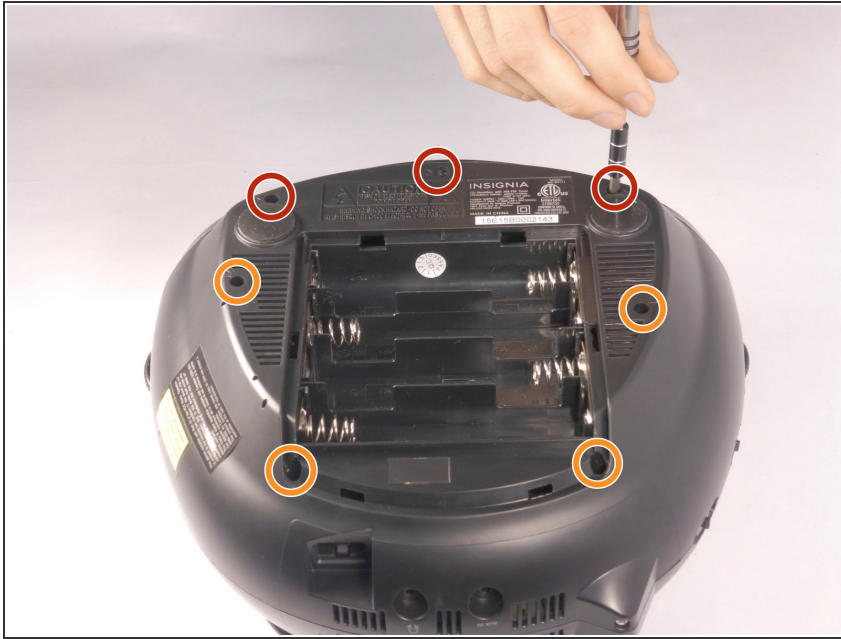
- Unplug and remove the power cord. Turn the boombox upside down.
- Grip the sides of the case and use your thumbs to pop open the battery cover.

## Step 2



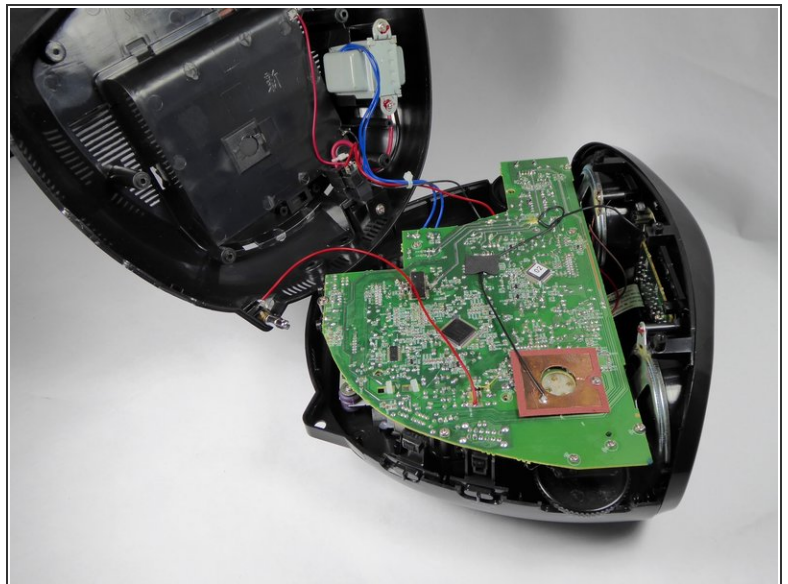
- Pry out the batteries with your fingers.

## Step 3 — Casing



- Turn the boombox upside down again. With the Phillips PH1 or the Flathead #3 screwdriver, remove the three 14mm black screws.
- Remove the four 18mm chrome screws with the Phillips PH1 screwdriver.

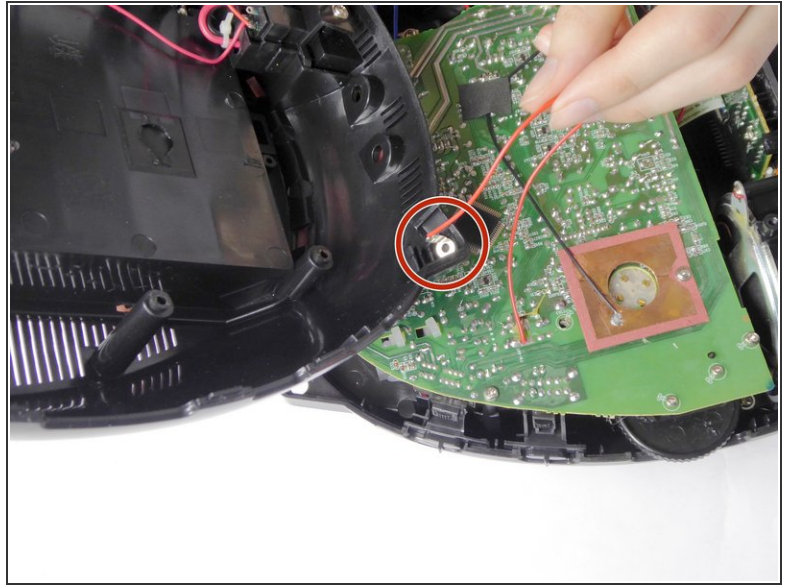
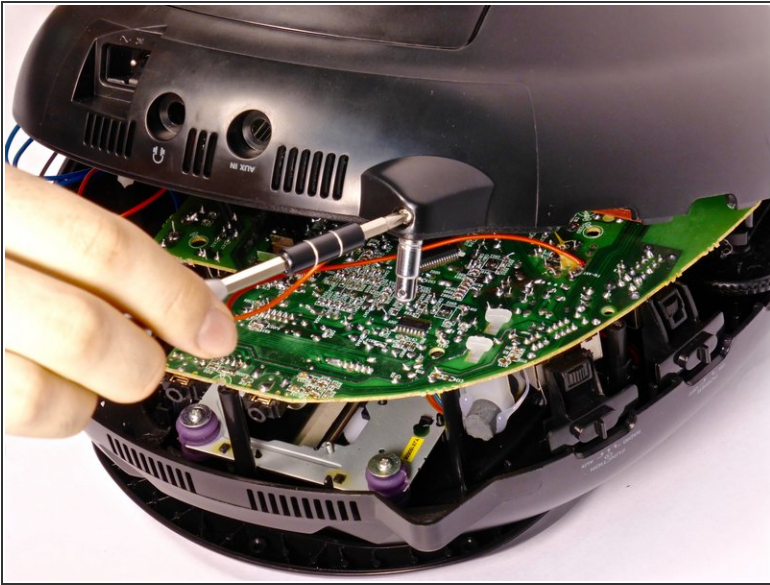
## Step 4



- Gently remove the bottom half of the casing from the top half of the casing.
- ⓘ The antenna base is connected to the motherboard by a red wire. This wire will prevent the two halves from separating completely.

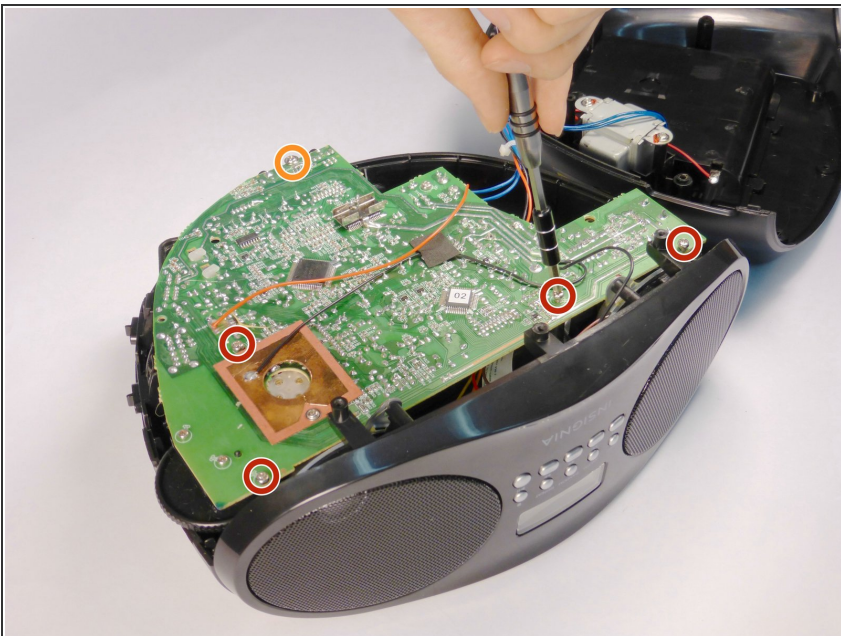


## Step 5 — Antenna Base



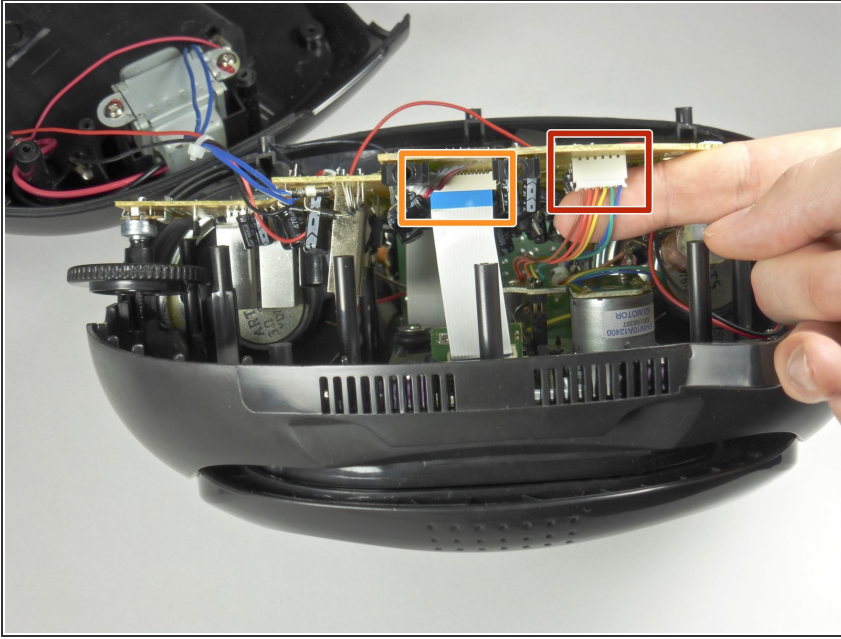
- Remove the 10mm chrome screw from the antenna base with the Phillips PH1 screwdriver. Remove the antenna base from the casing.
- This red wire will now be loose and you can move it out of the antenna base slot.

## Step 6 — Motherboard



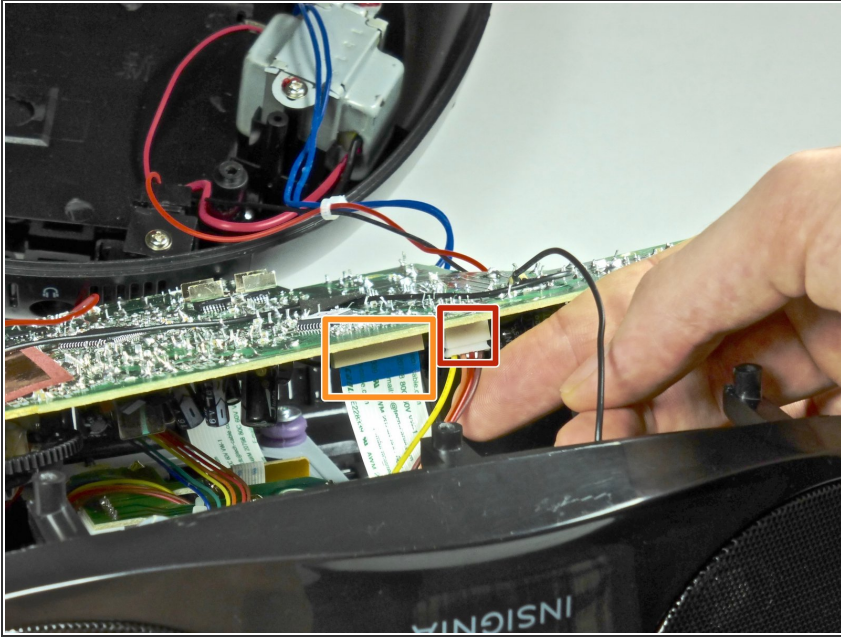
- Unscrew the four 12.5mm screws with the Phillips PH1 Screwdriver.
- Unscrew the one 10mm long screw with the Phillips PH1 Screwdriver.

## Step 7



- Orient the device so that the back is facing you.
- Unplug the six pin male/female header from its socket on the motherboard. The wires on the header are these colors: burgundy, red, orange, yellow, green, and blue.
- ⓘ Use a tweezer if you find it hard to pull the header out with your fingers.
- Gently pull out the ribbon cable from its socket on the motherboard.
- ★ Pay attention to the orientation of the header and the ribbon cable. Replacing the wires the wrong way may short circuit the board.

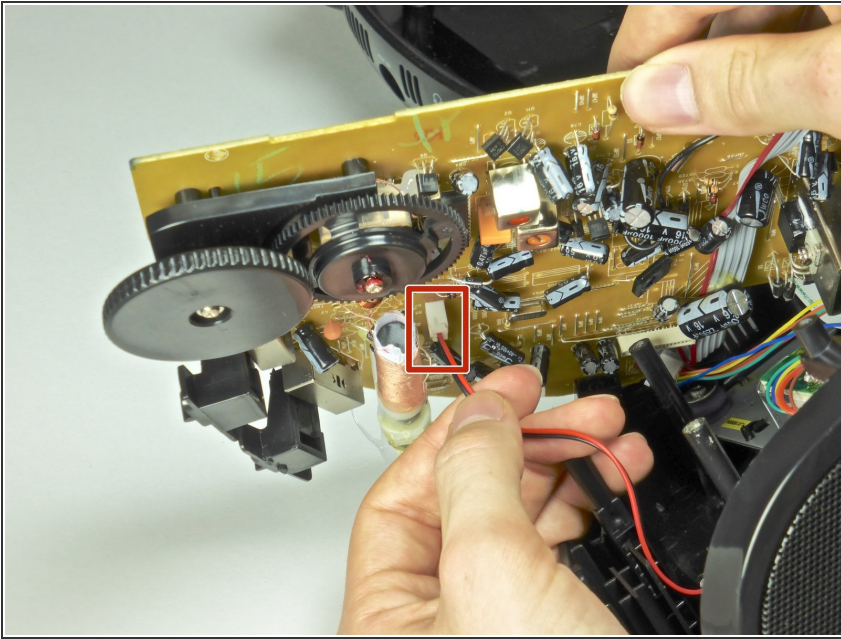
## Step 8



- Rotate the device so that the front is facing you.
- Unplug the four pin header from its socket on the motherboard. The wires on the header are these colors: brown, red, orange, and yellow.
- ⓘ Use a tweezer if you find it hard to pull this header out with your fingers.
- Gently pull out the ribbon cable from its socket.
- ★ Pay attention to the orientation of the header and the ribbon cable. Replacing the base the wrong way may short circuit the board.

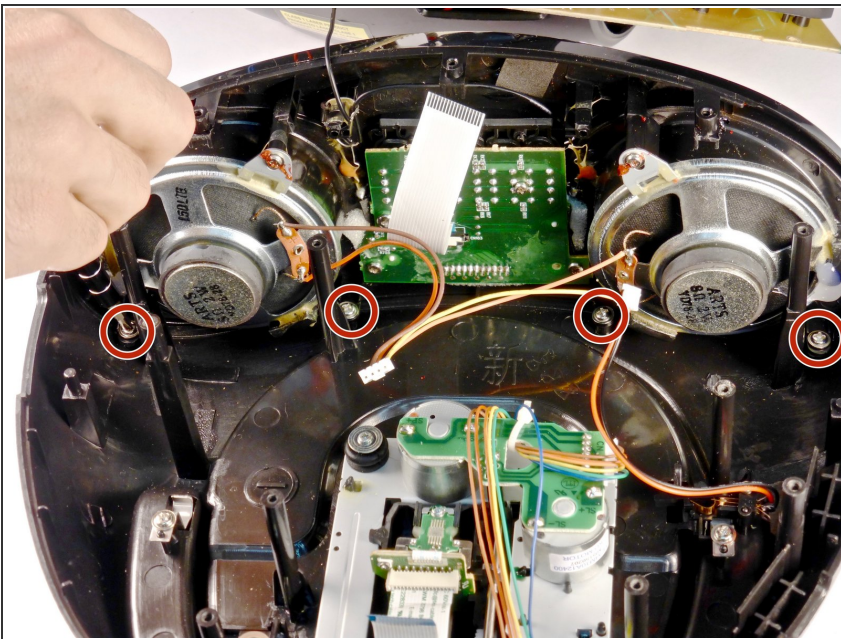


## Step 9



- Pull out the two pin header from its socket on the motherboard. The wires on this header are black and white.
- ⓘ Use a tweezer if you find it hard to pull this cable out with your fingers.

## Step 10 — Front Panel



- Remove the four 8.5mm chrome screws from the front panel with the Phillips PH1 screwdriver.

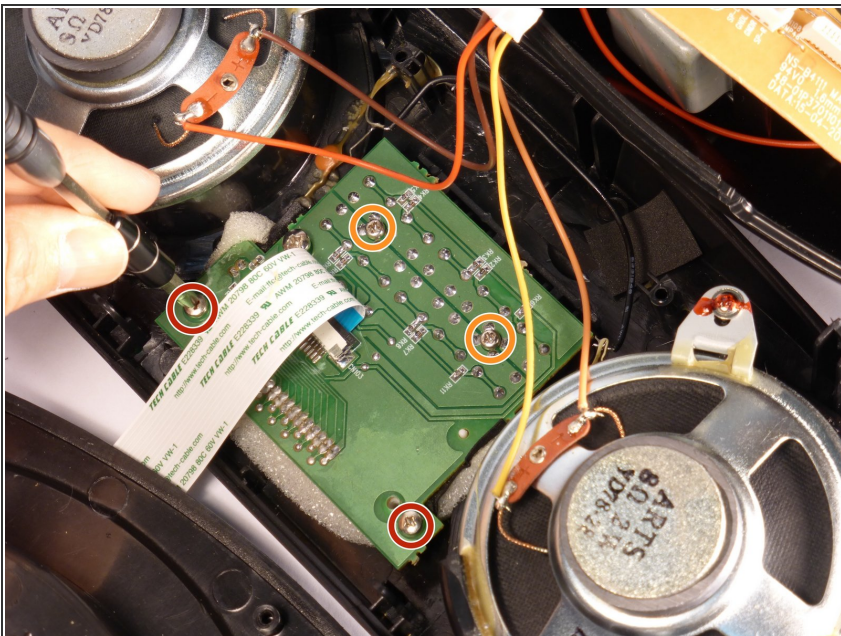


## Step 11



- Remove the front panel from the top casing.

## Step 12 — Switchboard



- Remove the 10.5 mm screws in the corners with the Phillips PH1 screwdriver.
- Remove the two 10.5 mm screws near the center of the board with the Phillips PH1 screwdriver.

## Step 13



- Lift the board to remove it from the front panel.

To reassemble your device, follow these instructions in reverse order.