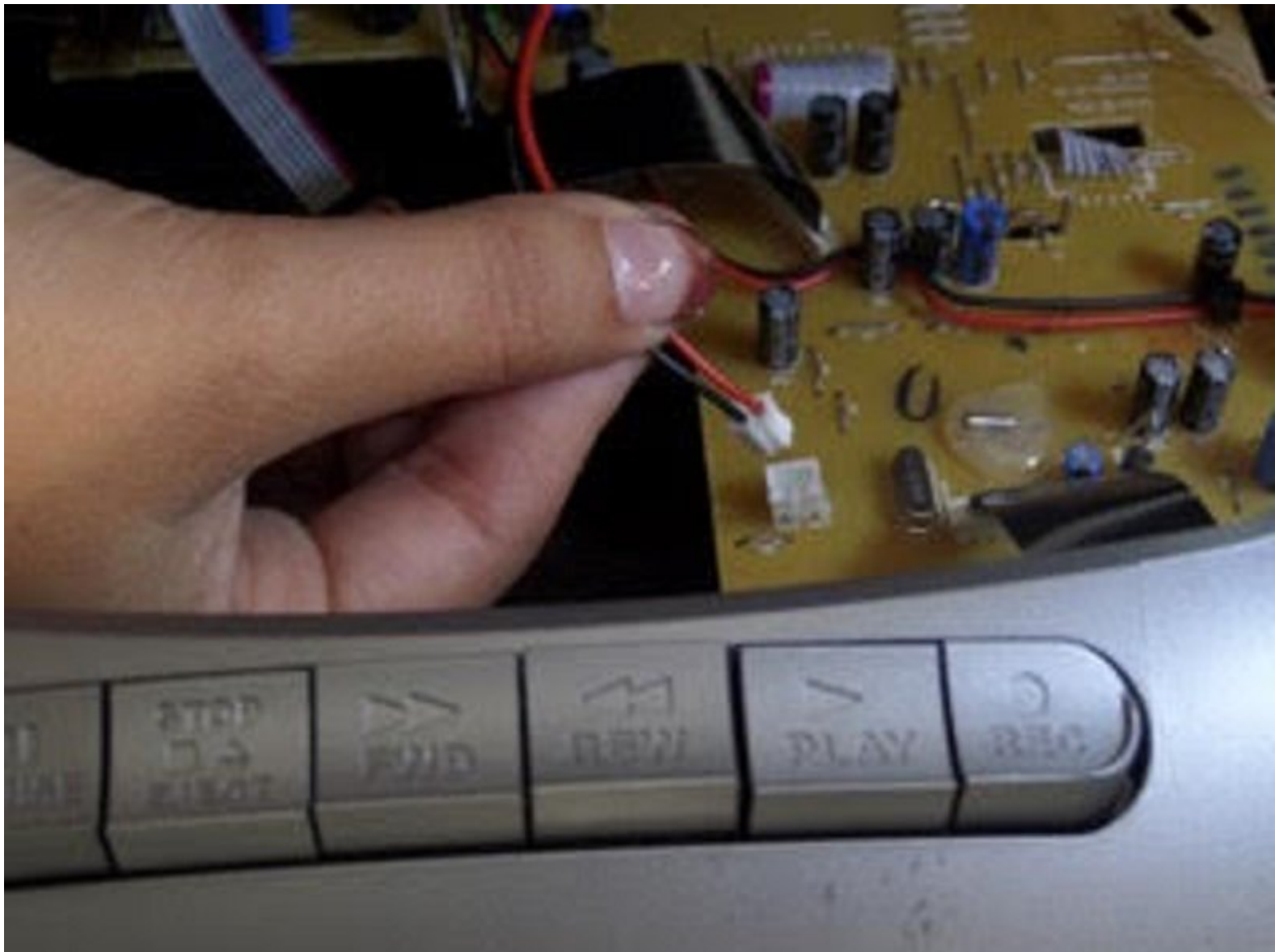




Insignia NS-BCDCAS1 CD Laser Lens Replacement

This guide will show you step by step how to replace the CD laser lens to your boombox .

Written By: Erin King



INTRODUCTION

This product plays both CD's and Cassettes as well as AM/FM radio stations.

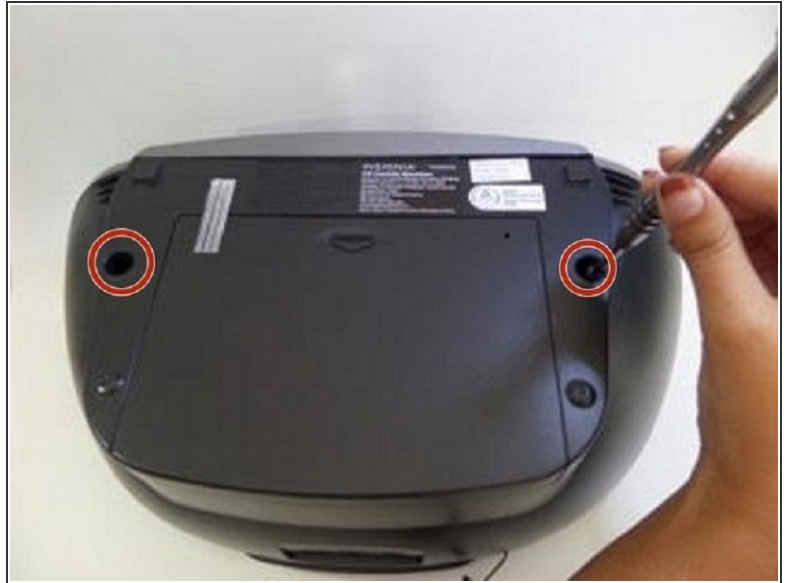
Before attempting this replacement, make sure to use a anti-static strap to prevent circuit damages to your device.



TOOLS:

- [2.5 mm Flathead Screwdriver](#) (1)
 - [Phillips #0 Screwdriver](#) (1)
 - [JIS Driver Set](#) (1)
 - [iFixit Opening Tools](#) (1)
-

Step 1 — Outer Panels



- Turn the boombox around to see the back, and then flip it upside down.
- Insert a 2.5mm flathead driver into the two holes next to the battery compartment.
- Turn the driver counterclockwise several times to loosen and pull out the 17mm screw.

Step 2



- Peel off the two black square foams in front of the battery compartment to reveal a screw under each one.

Step 3



- Remove the two 8mm screws using a 2.5mm flathead driver.
- The front grey panel will loosen up once the final screw is removed.

Step 4



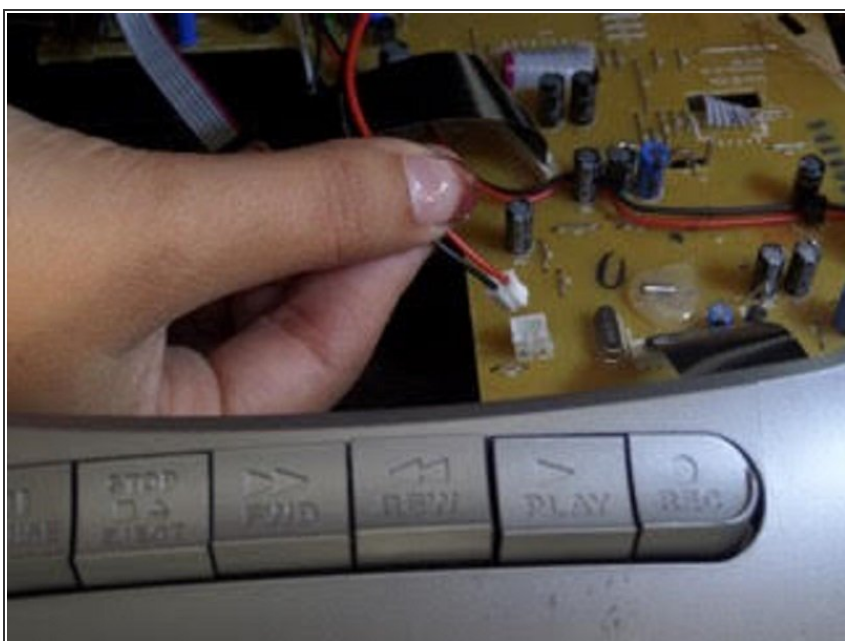
- Turn the boombox on its back.
- Release the front panel by pushing down on the latches holding the panels together.
- There are four silver latches on the top side of the panel and one on the bottom.
- ⓘ Do not force the panel completely off, there are cables attached inside.

Step 5



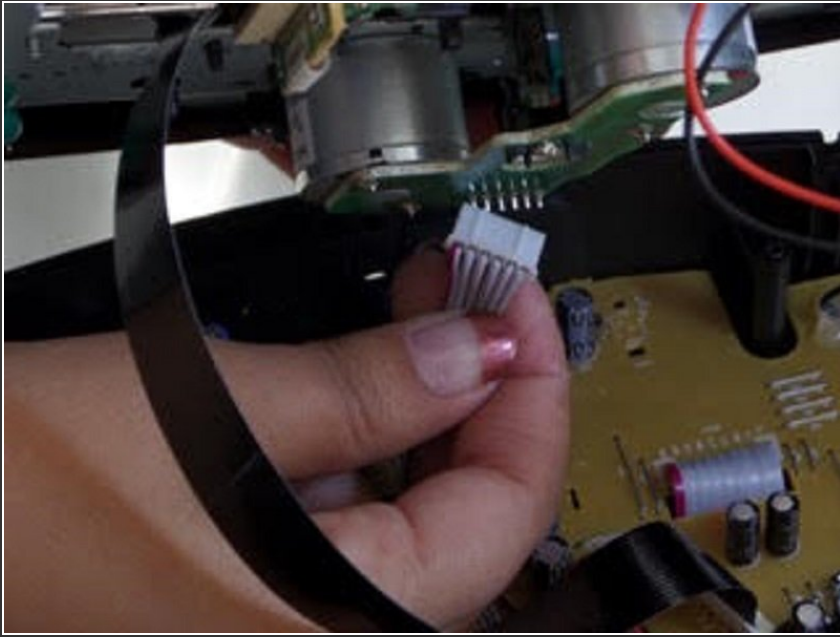
- Turn the boombox around to view the back and lift the handle up.
- Using the same driver with 2.5mm flathead, remove the two 14mm screws under the handle.
- Gently lift the black top but do not pull completely away.

Step 6 — CD Laser Lens



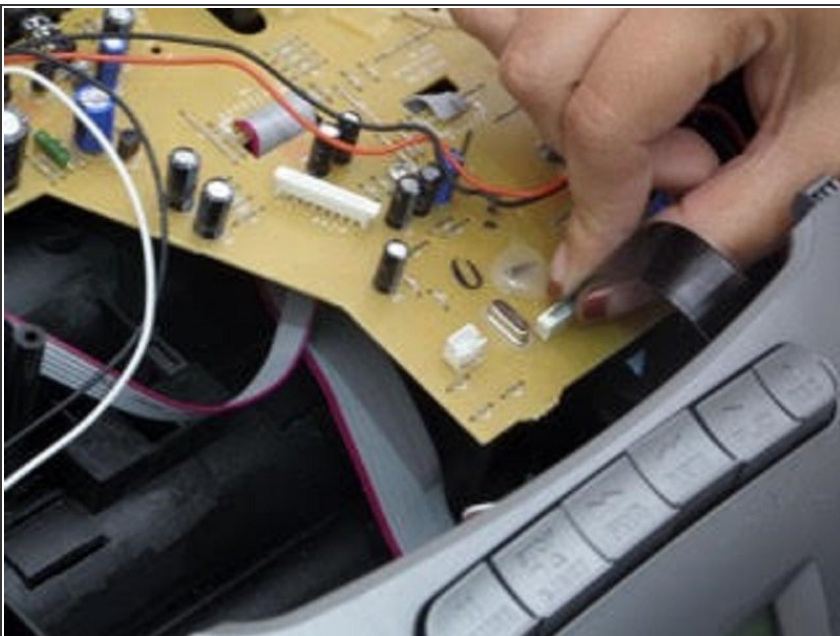
- Unplug the red and black wires from the large yellow motherboard by pulling upwards.

Step 7



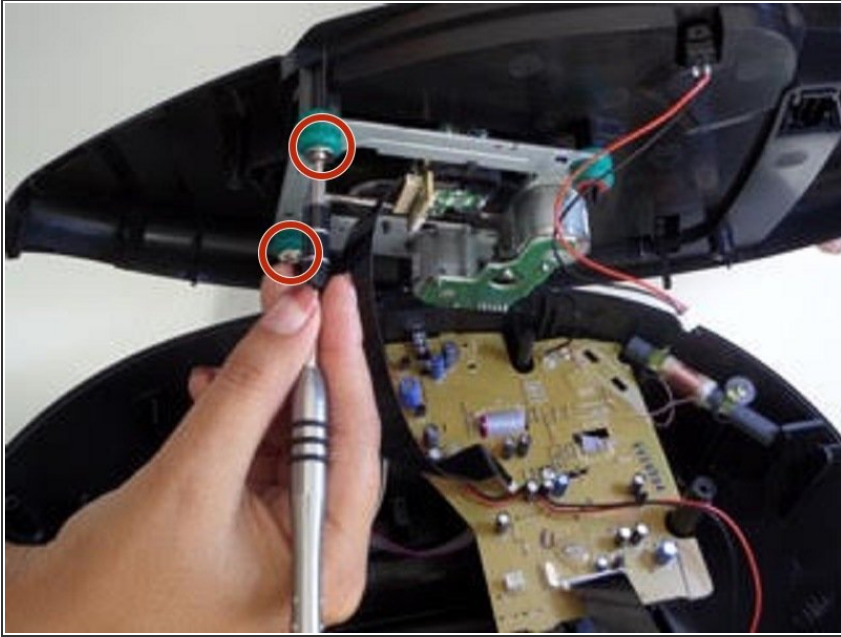
- Unplug the thick, white and pink cord from underneath the black top by pulling downwards.

Step 8



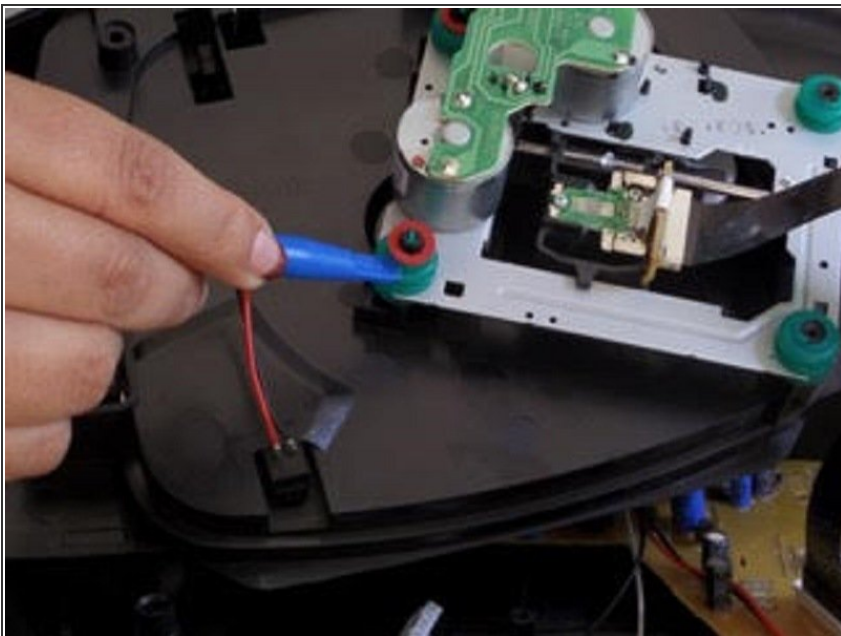
- Remove the black shiny strip from both ends of the white motherboard adaptor.

Step 9



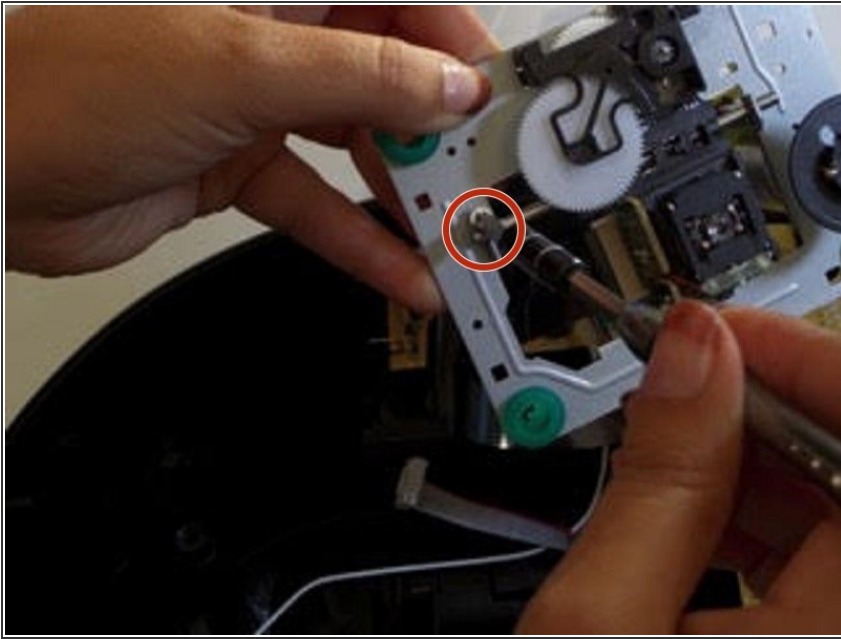
- Using a Phillips #0, remove the two 11mm screws attached to the green legs underneath the top panel.

Step 10



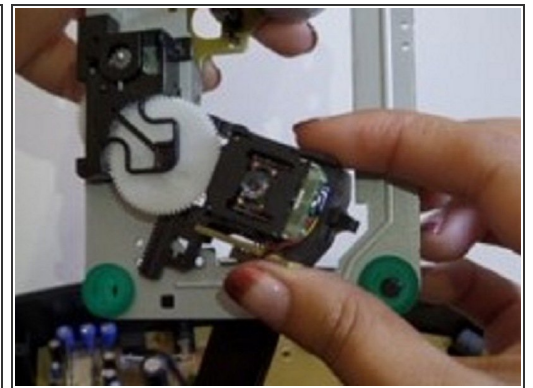
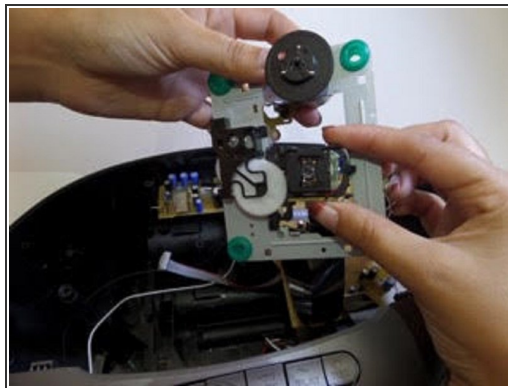
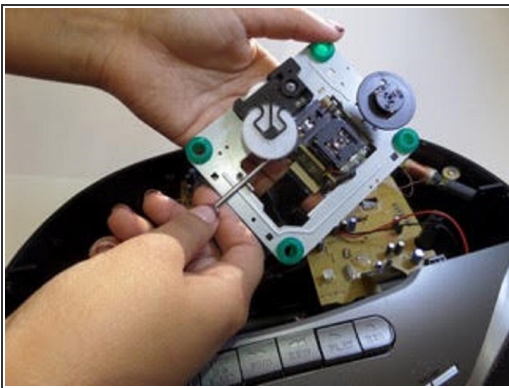
- With a plastic opening tool, take off the red rings on the other two green legs.
- ⓘ The red rings fall off easily once loosened.

Step 11



- Using a JIS 1, remove the 8mm screw on the grey, square plate.

Step 12



- Slide the silver bar out.
- ⓘ Everything will be loosened. Support it with your hand
- The square cube with the tiny lense is loosened. Slide it down to take out of the nook.
- Detach the black tape so the cube is completely by itself. Replace the cube with a new one.

To reassemble your device, follow these instructions in reverse order.

