



Insignia NS-BCDCAS1 Cassette Door Latch Replacement

This guide will show you how to properly get to the cassette door latch of your boombox and fix a door that will not close

Written By: diego geldres

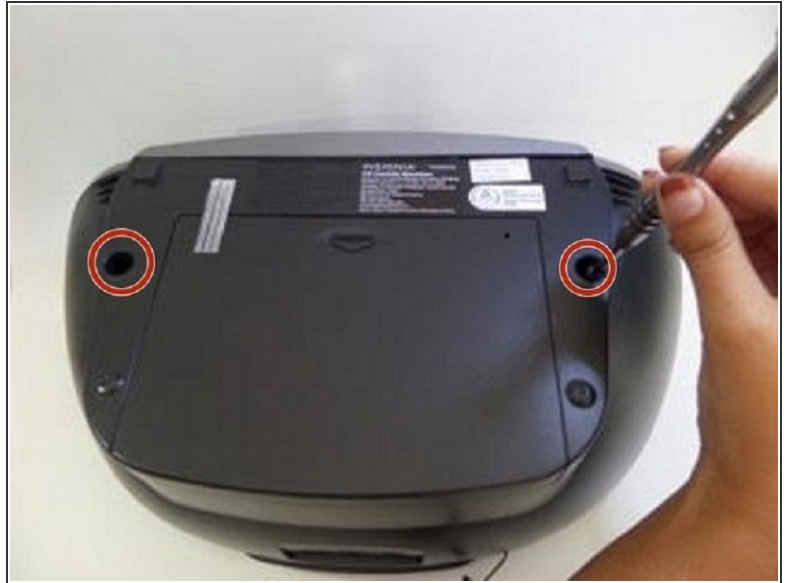




TOOLS:

- [2.5 mm Flathead Screwdriver](#) (1)
-

Step 1 — Outer Panels



- Turn the boombox around to see the back, and then flip it upside down.
- Insert a 2.5mm flathead driver into the two holes next to the battery compartment.
- Turn the driver counterclockwise several times to loosen and pull out the 17mm screw.

Step 2



- Peel off the two black square foams in front of the battery compartment to reveal a screw under each one.

Step 3



- Remove the two 8mm screws using a 2.5mm flathead driver.
- The front grey panel will loosen up once the final screw is removed.

Step 4



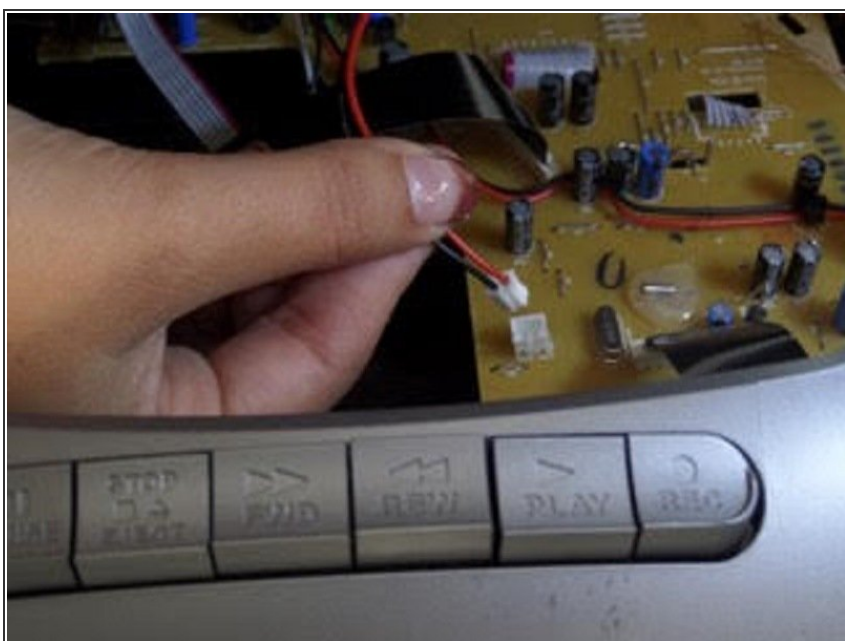
- Turn the boombox on its back.
- Release the front panel by pushing down on the latches holding the panels together.
- There are four silver latches on the top side of the panel and one on the bottom.
- ⓘ Do not force the panel completely off, there are cables attached inside.

Step 5



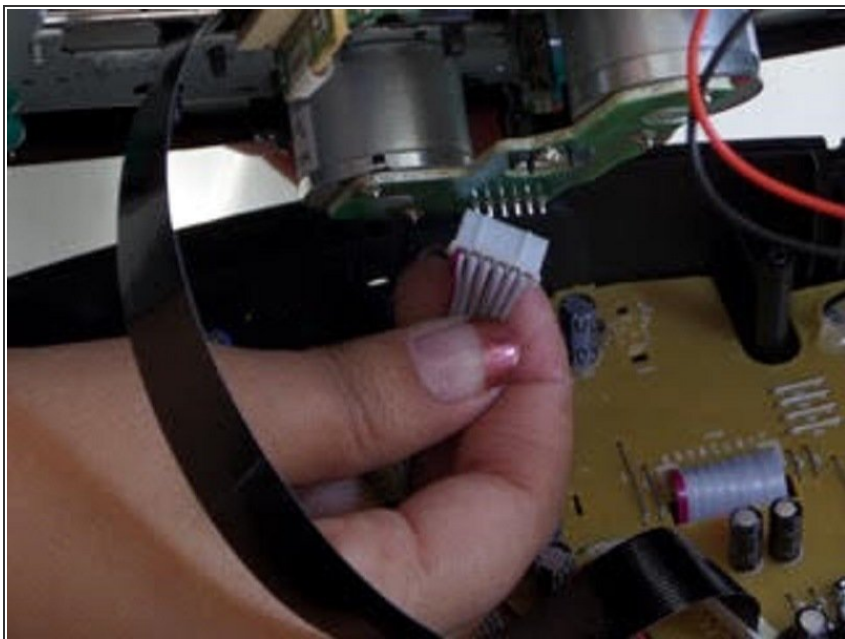
- Turn the boombox around to view the back and lift the handle up.
- Using the same driver with 2.5mm flathead, remove the two 14mm screws under the handle.
- Gently lift the black top but do not pull completely away.

Step 6 — Cassette Door Latch



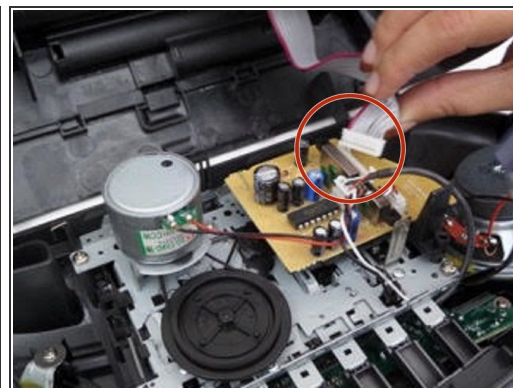
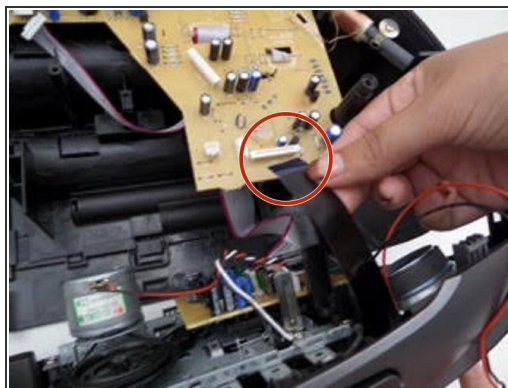
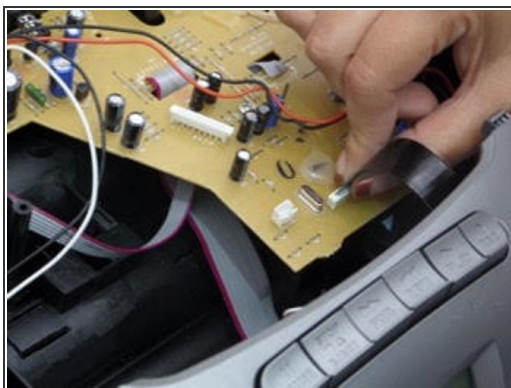
- Start by unplugging the red and black cable connected to the motherboard

Step 7



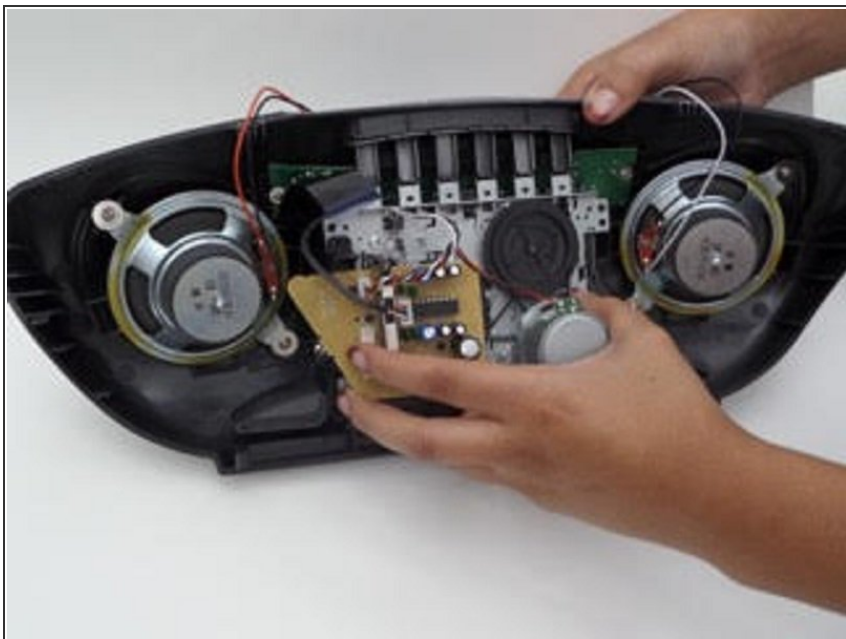
- Unplug the red and pink wires connecting the top of the device to the motherboard

Step 8



- Disconnect the black shiny tape connecting the motherboard to the front of the device
- Also disconnect the pink and white wires connecting the cassette unit to the device.

Step 9



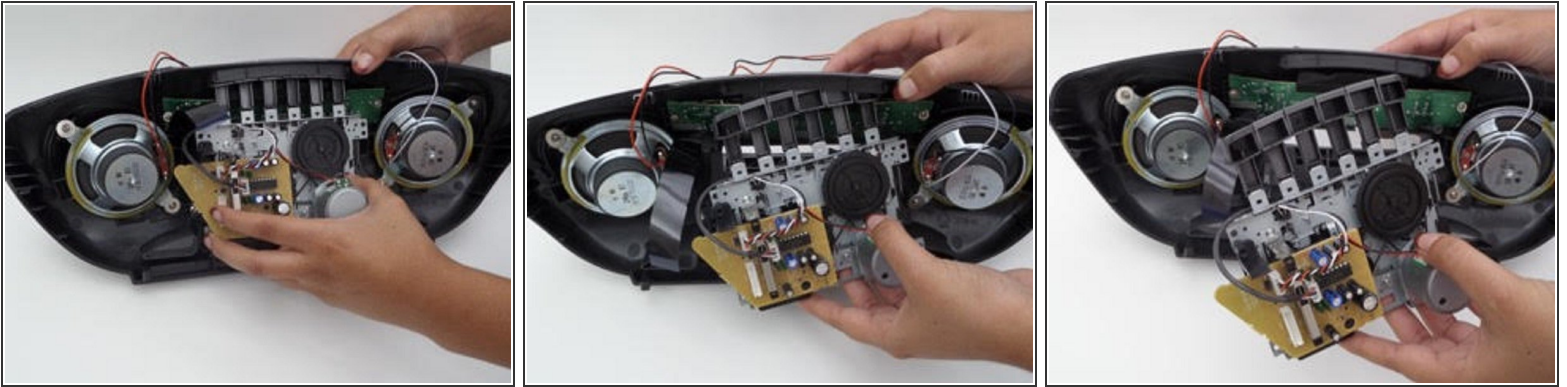
- After disconnecting all the wires, the front panel is now free and easy to work on.

Step 10



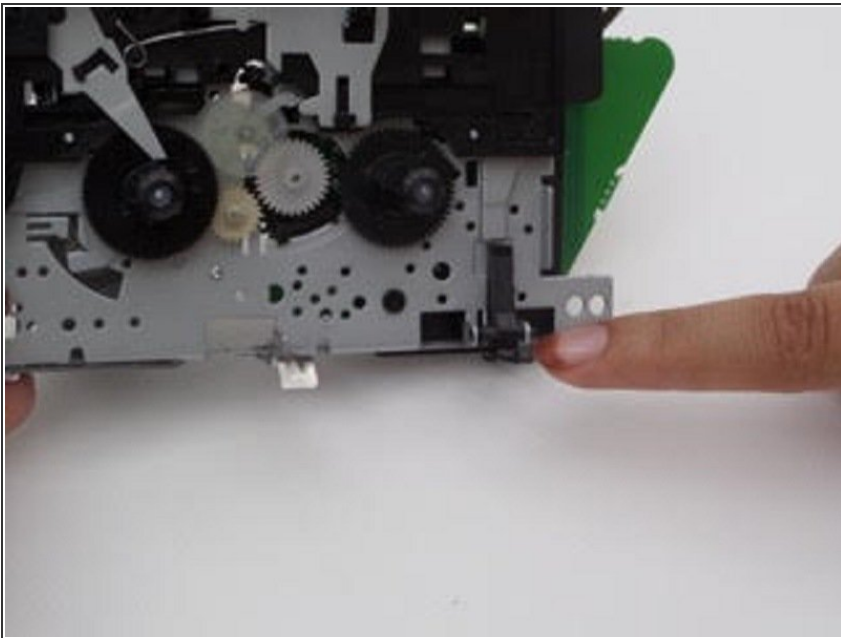
- To remove the cassette unit, use a 2.5mm flathead on the 4 screws holding the unit together.

Step 11



- While pressing the eject bottom, pull the cassette unit down and away from the front panel.

Step 12



- The door latch is located on the bottom corner of the cassette unit.

To reassemble your device, follow these instructions in reverse order.