



Insignia NS-CLIP02 30-Pin Connector Replacement

Written By: Erik





TOOLS:

- [Screwdriver](#) (1)
- [Metal Spudger](#) (1)
- [iFixit Opening Tools](#) (1)

Step 1 — 30-Pin Connector



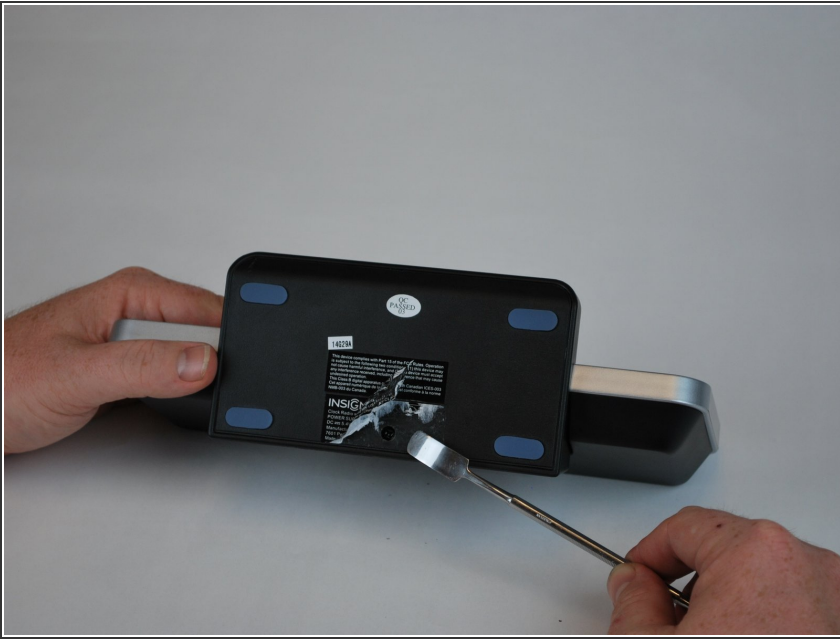
- Locate the bottom of the device.

Step 2



- Begin by using a metal spudger to peel back the adhesive sticker and locate the screw beneath the sticker.

Step 3



- Locate the 11mm screw beneath the sticker.

Step 4



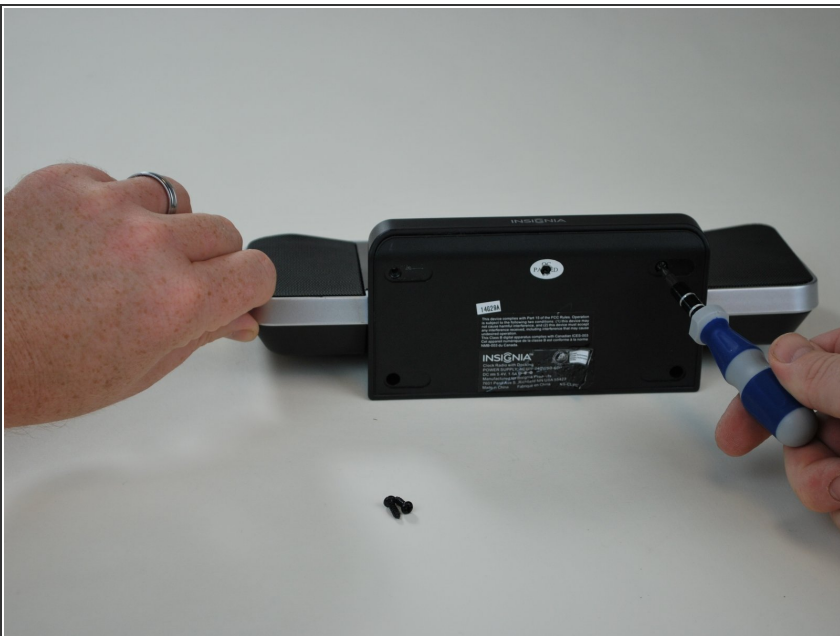
- Using a plastic spudger, peel off the adhesive gel stoppers.

Step 5



- Continue peeling the rest of the gel stoppers from the bottom of the device.

Step 6



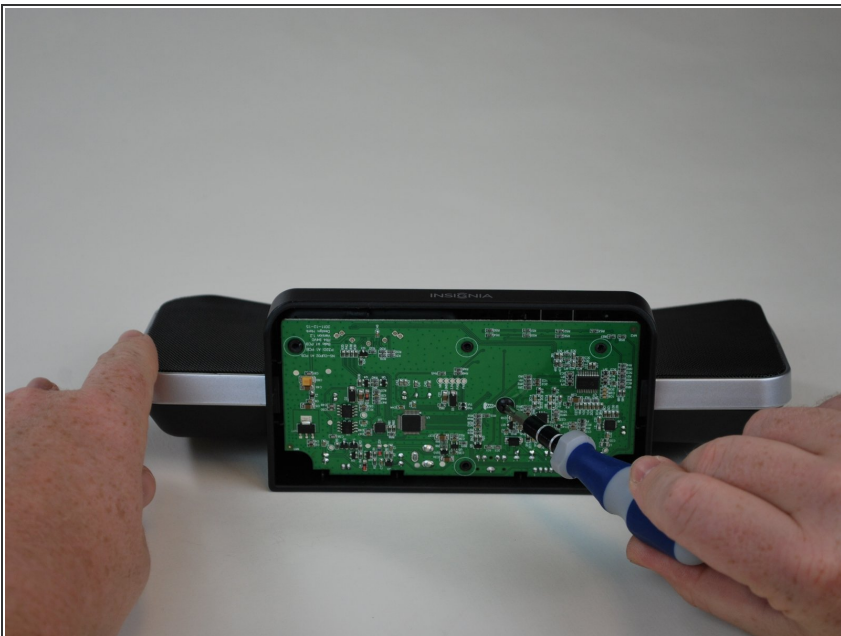
- Begin unscrewing the six 11mm screws with a Phillips head screw driver.

Step 7



- Once you peel off the bottom from the device, you will see the motherboard.

Step 8



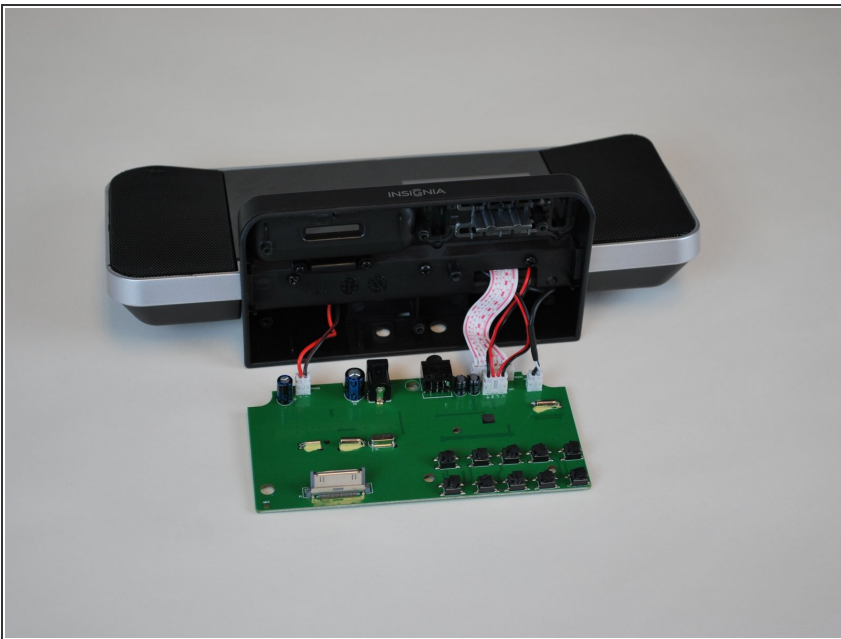
- Unscrew the 9.5mm screw located near the center of the motherboard with a Phillips head screw driver.

Step 9



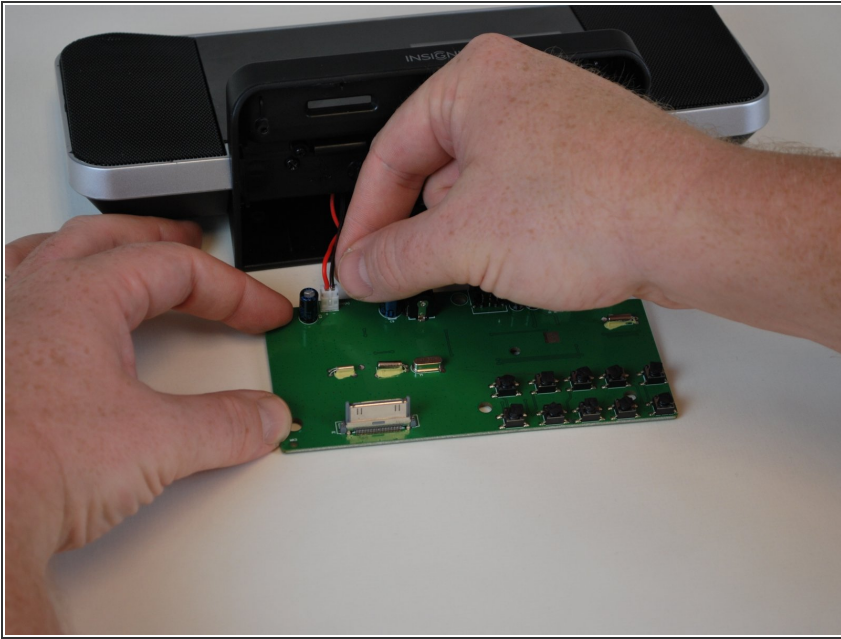
- Lift the motherboard from the device.

Step 10



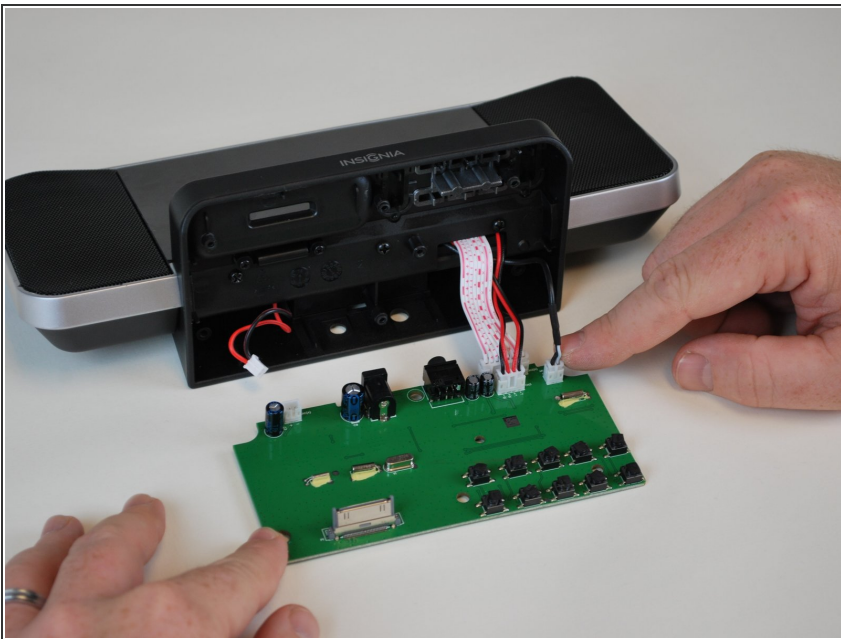
- Locate the four plugs connecting the motherboard to the rest of the device.

Step 11



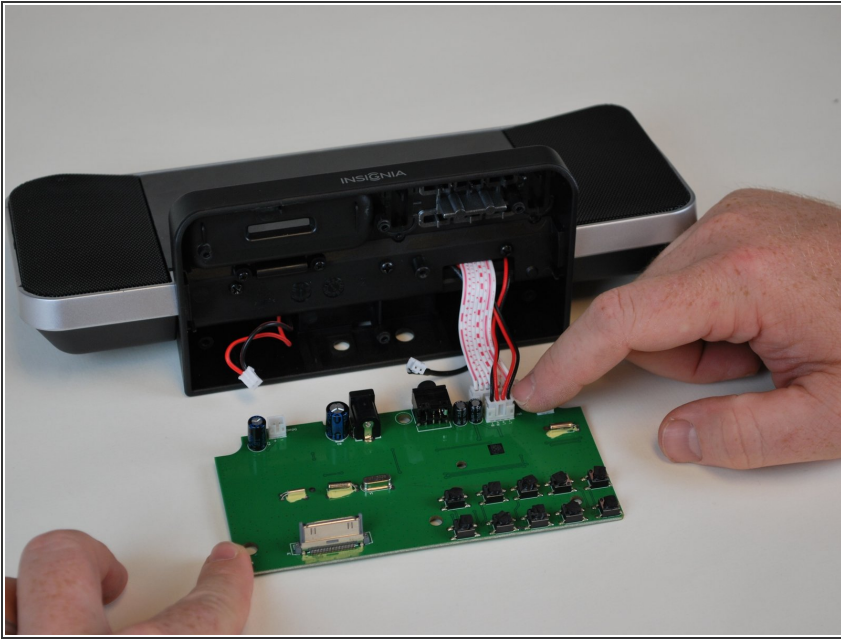
- Begin with remove the plug to your left.

Step 12



- Remove the plug to your right from the motherboard.

Step 13



- Remove the plug in the front of the lcd screen plug.

Step 14



- Remove the LCD screen plug last. Then, follow the following instructions in reverse, replacing the old motherboard with the new one to fix the 30-Pin Connector.

To reassemble your device, follow these instructions in reverse order.