



# Insignia NS-CLIP02 Digital Display Replacement

Removal and replacement of the digital display.

Written By: Aubrey



---

# INTRODUCTION

This guide details how to locate and remove the digital display for replacement.

---



## TOOLS:

- [Metal Spudger](#) (1)
  - [Magnetized jeweler's #1 Phillips screwdriver](#) (1)
-

## Step 1 — Motherboard



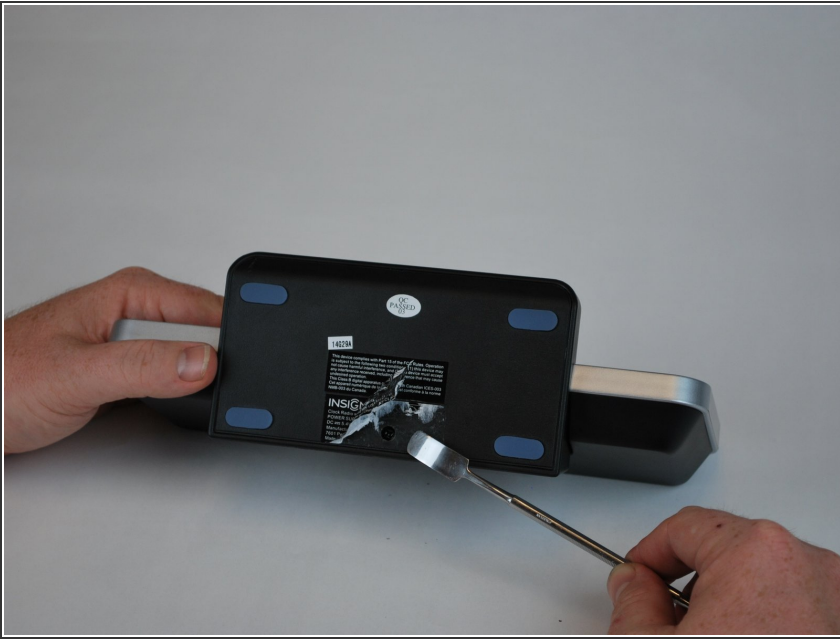
- Locate the bottom of the device.

## Step 2



- Begin by using a metal spudger to peel back the adhesive sticker and locate the 11mm screw beneath the sticker.

### Step 3



- Locate the 11mm screw beneath the sticker.

### Step 4



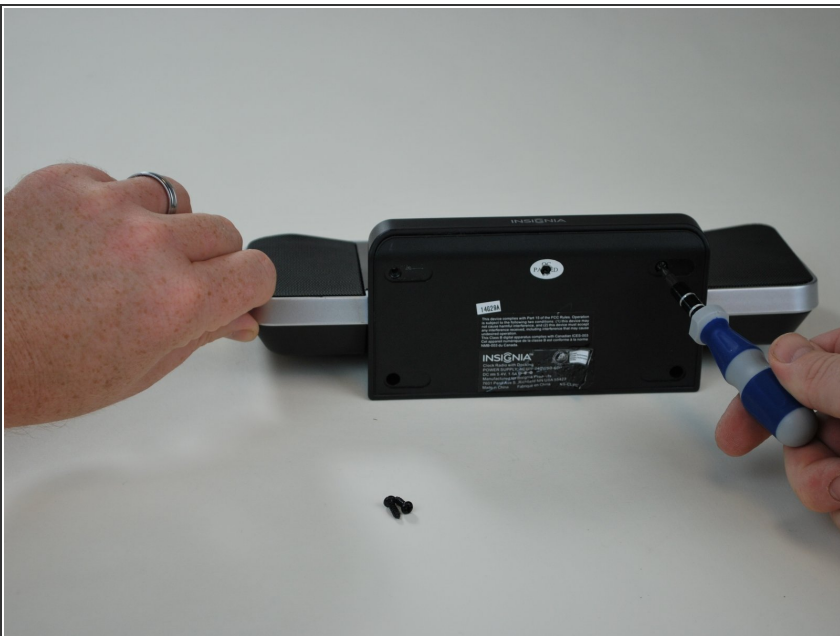
- Using a plastic opening tool, peel off the adhesive gel stoppers

## Step 5



- Continue peeling the rest of the gel stoppers from the bottom of the device.

## Step 6



- Begin unscrewing the six 11mm screws with a Phillips head screw driver.

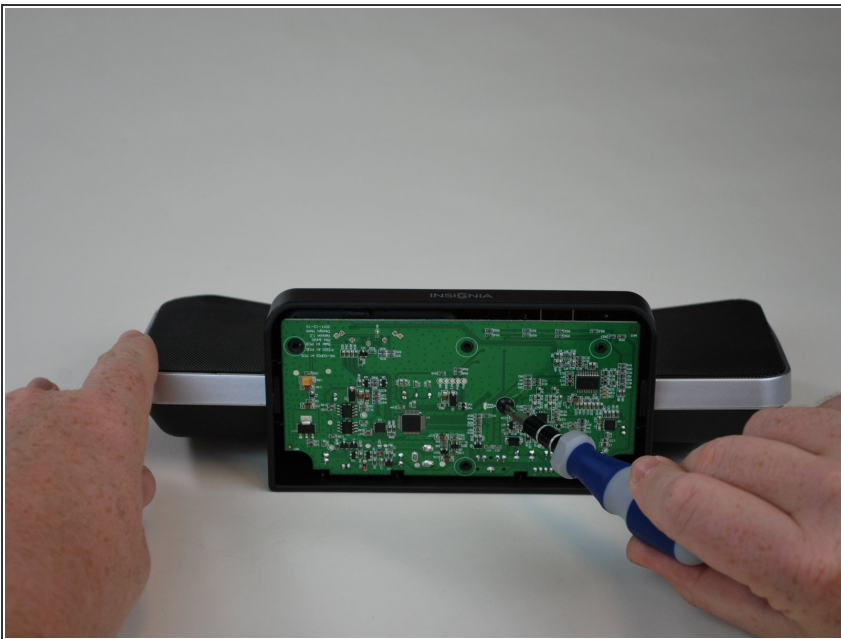


## Step 7



- Once you peel off the bottom from the device, you will see the motherboard.

## Step 8



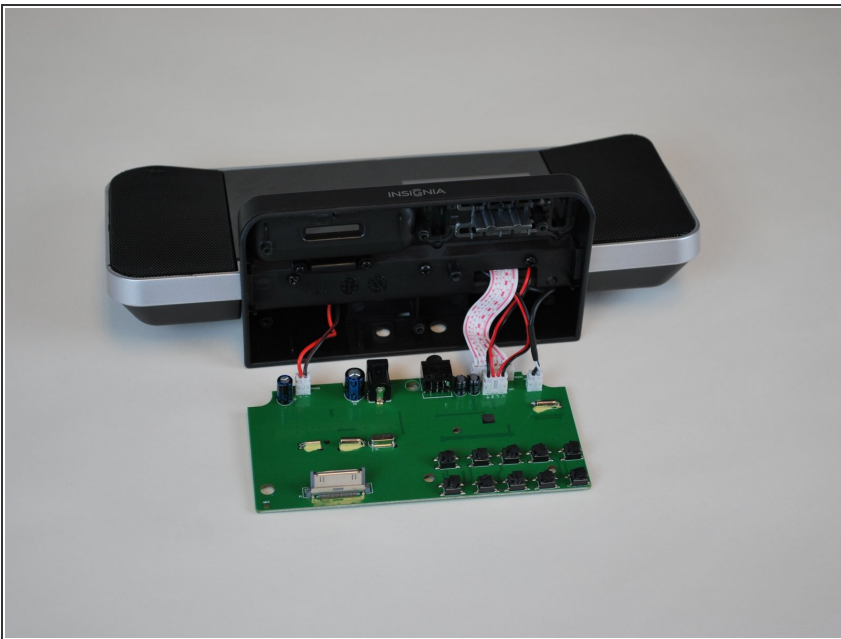
- Unscrew the 9.5mm screw located near the center of the motherboard with a Phillips head screw driver.

## Step 9



- Lift the motherboard from the device.

## Step 10



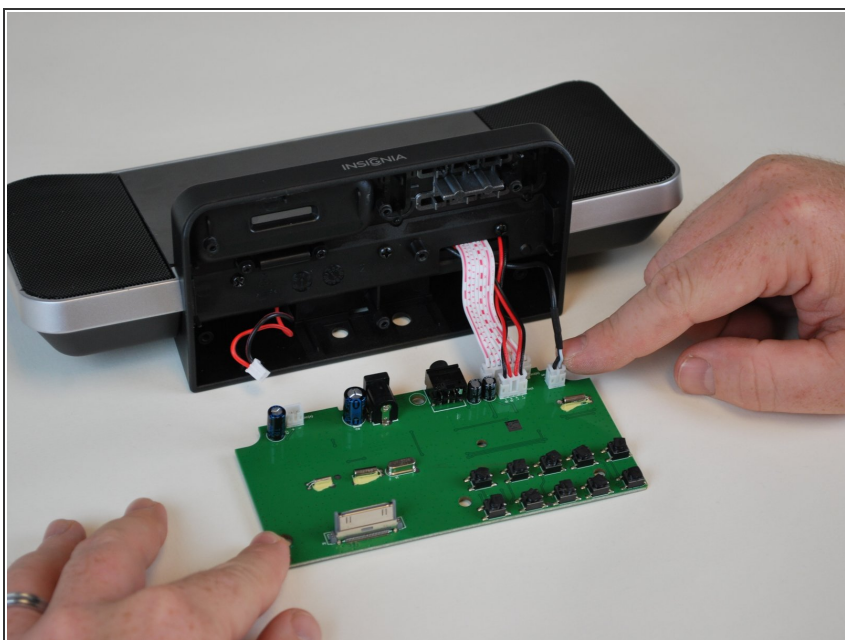
- Locate the four plugs connecting the motherboard to the rest of the device.

## Step 11



- Begin with remove the plug to your left.

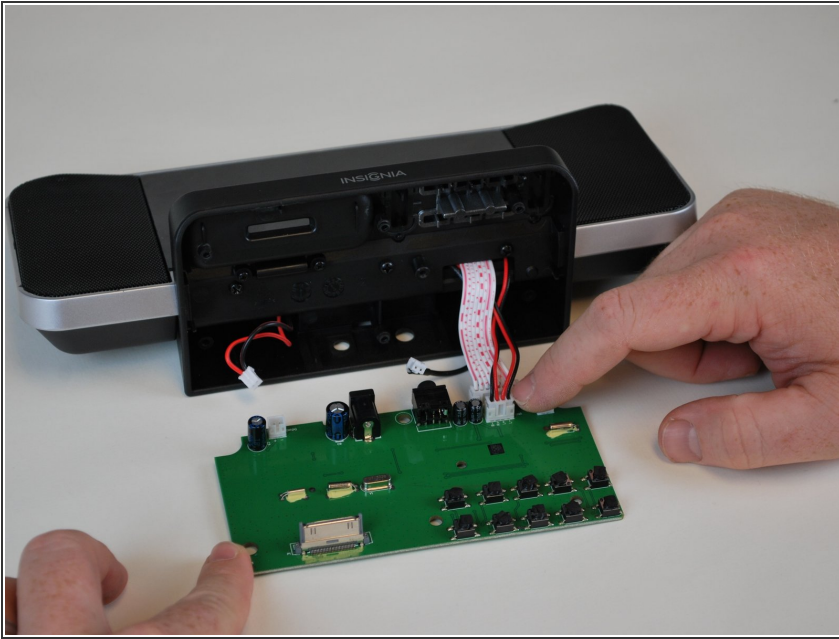
## Step 12



- Remove the plug to your right from the motherboard.

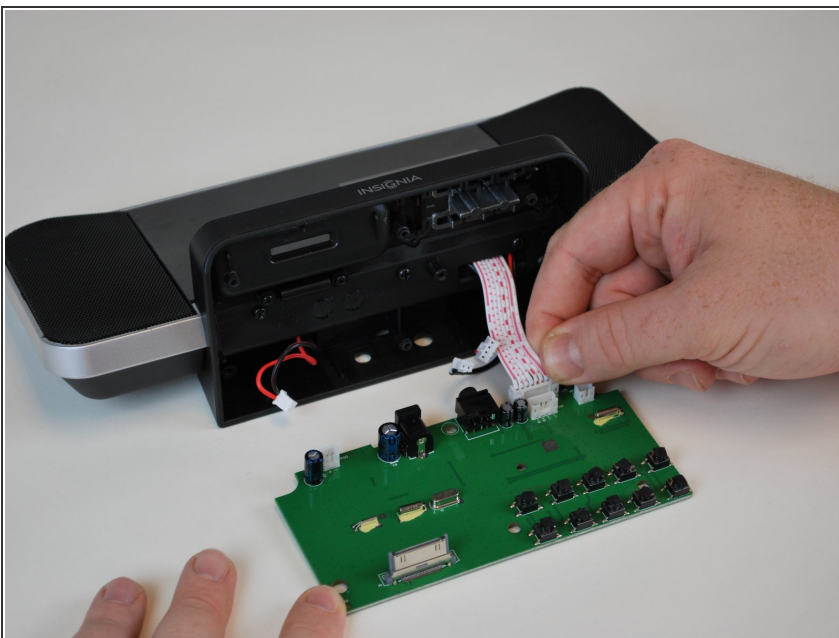


## Step 13



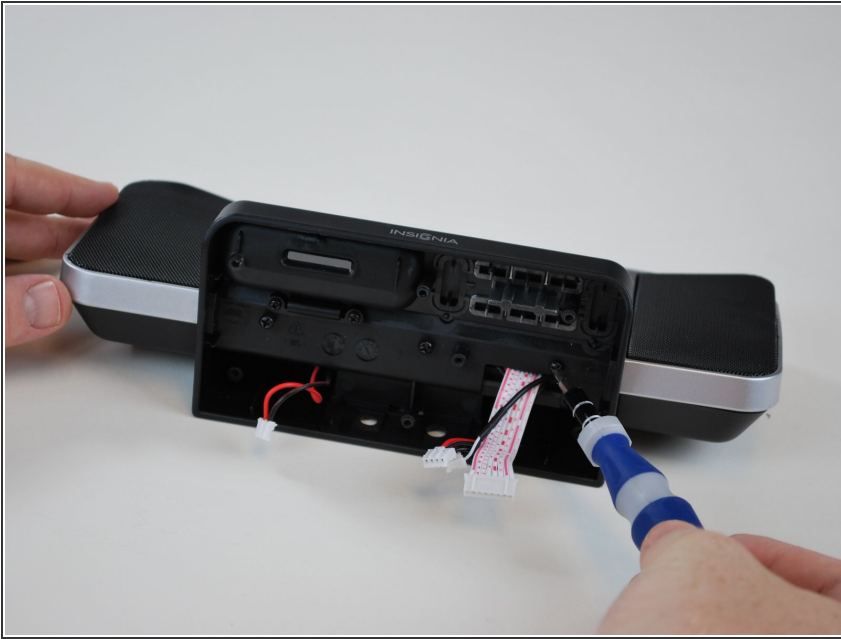
- Remove the plug in the front of the lcd screen plug.

## Step 14



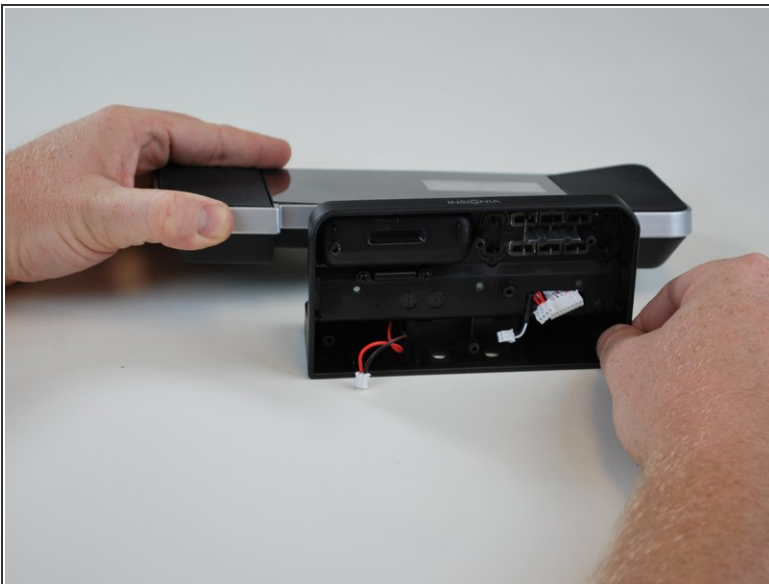
- Remove the LCD screen plug last. Then, follow the following instructions in reverse to replace the old motherboard with the new one.

## Step 15 — Digital Display



- With the phillips screwdriver, remove the three screws that run along the center of the base.

## Step 16



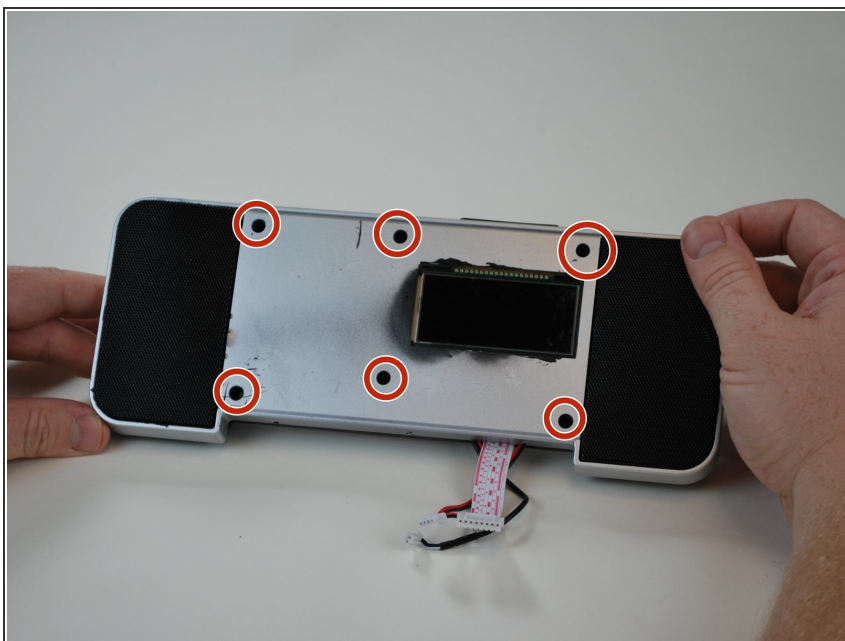
- Remove the base.

## Step 17



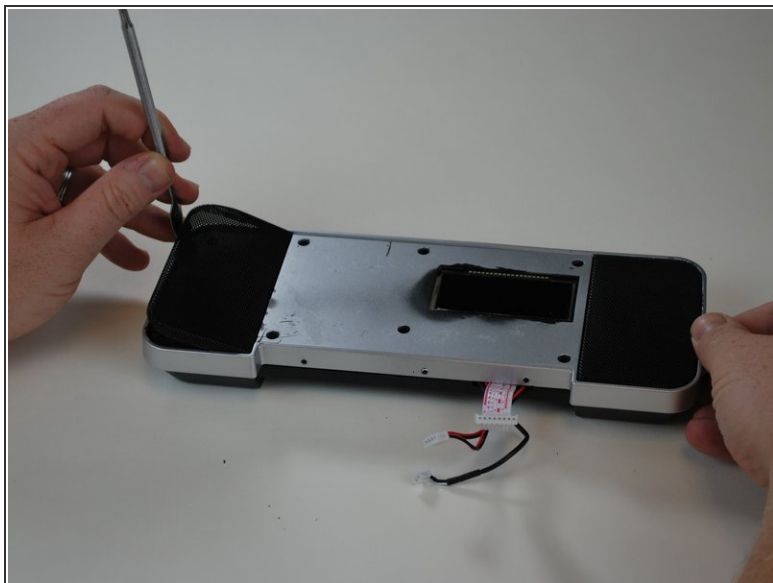
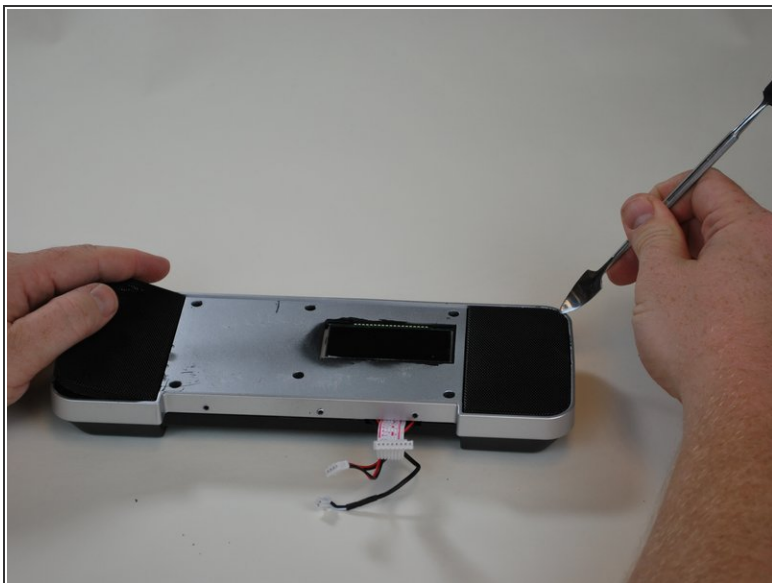
- Using the metal spudger, gently lift the face plate away from the display.

## Step 18



- Once the face plate is removed, use the phillips screwdriver to remove the six screws shown here.

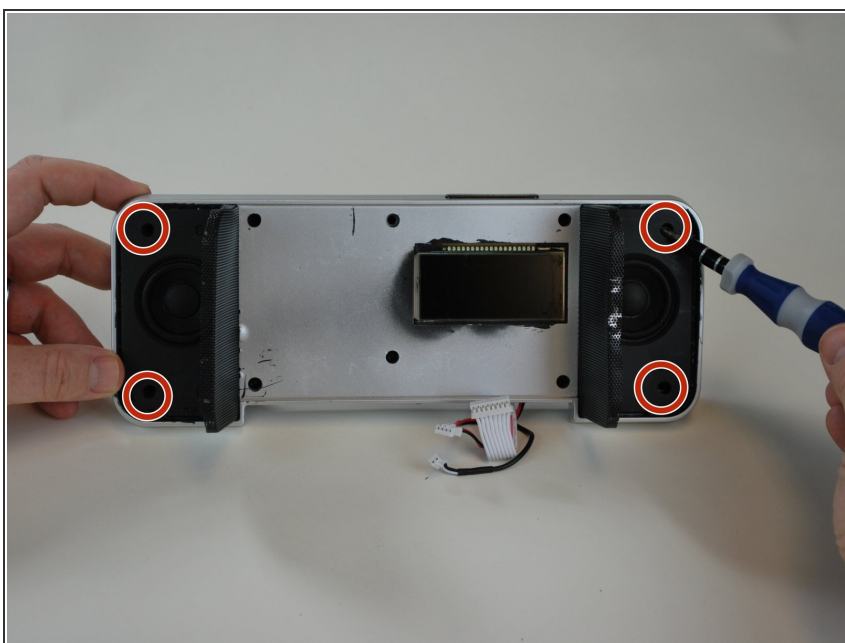
## Step 19



- Using the metal spudger, lift the speaker grilles from the display.

**i** The speaker grilles will hinge on the side closest to the display.

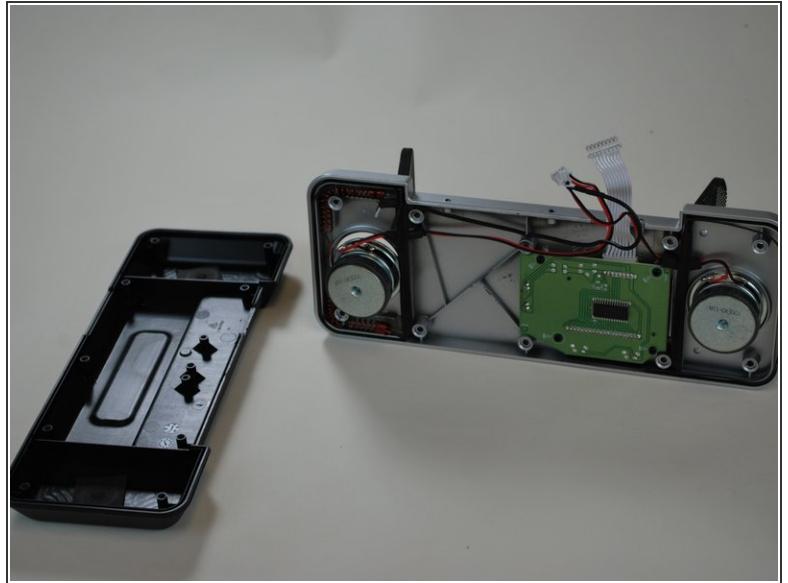
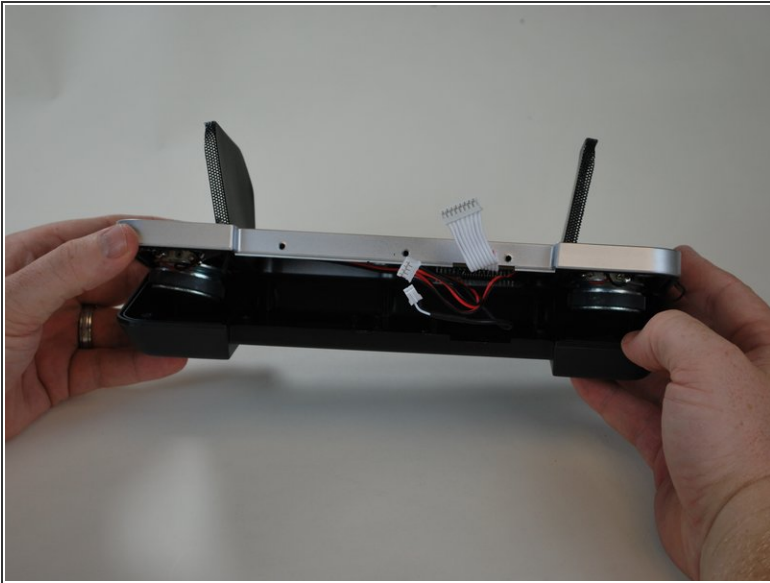
## Step 20



- Using the Phillips screwdriver, remove the four screws shown here.

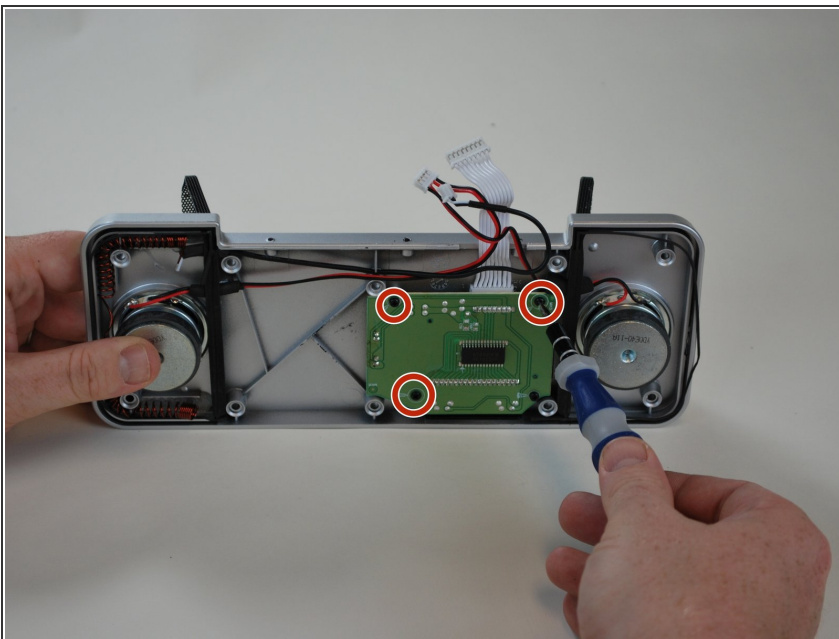


## Step 21



- The two pieces of the display will now separate easily.

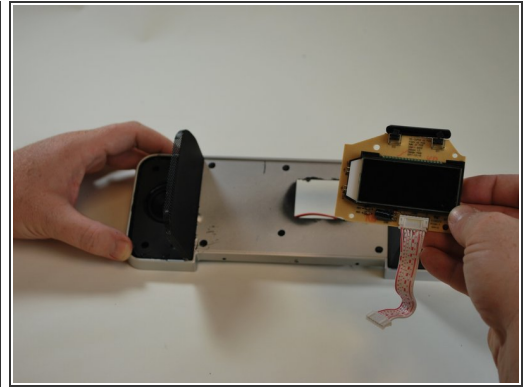
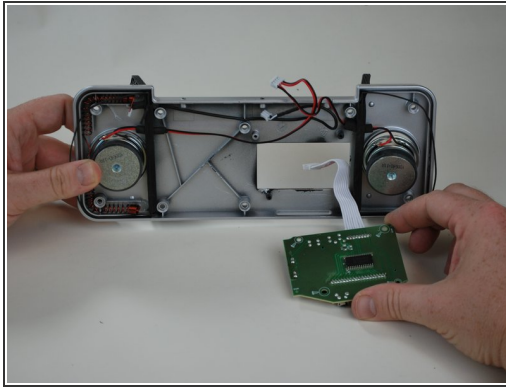
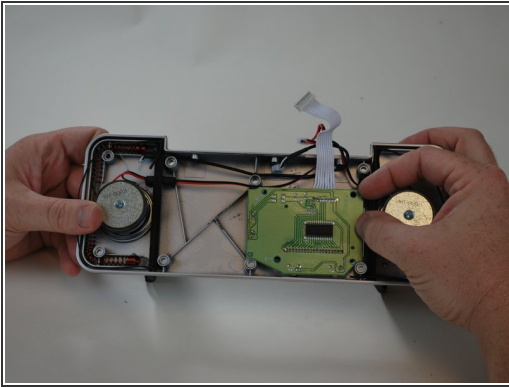
## Step 22



- Using the phillips screwdriver, remove the three screws shown here.



## Step 23



- The digital display should now be easy to remove.
- Replace with new part.

To reassemble your device, follow these instructions in reverse order.