



# Insignia NS-CLIP02 Motherboard Replacement

Written By: Erik





## TOOLS:

- [Essential Electronics Toolkit](#) (1)
- [Metal Spudger](#) (1)

## Step 1 — Motherboard



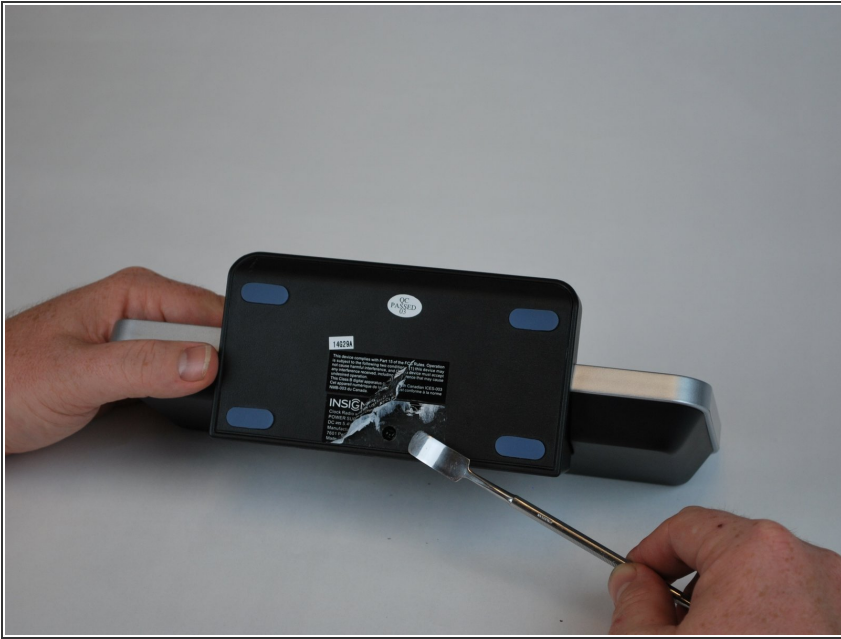
- Locate the bottom of the device.

## Step 2



- Begin by using a metal spudger to peel back the adhesive sticker and locate the 11mm screw beneath the sticker.

### Step 3



- Locate the 11mm screw beneath the sticker.

### Step 4



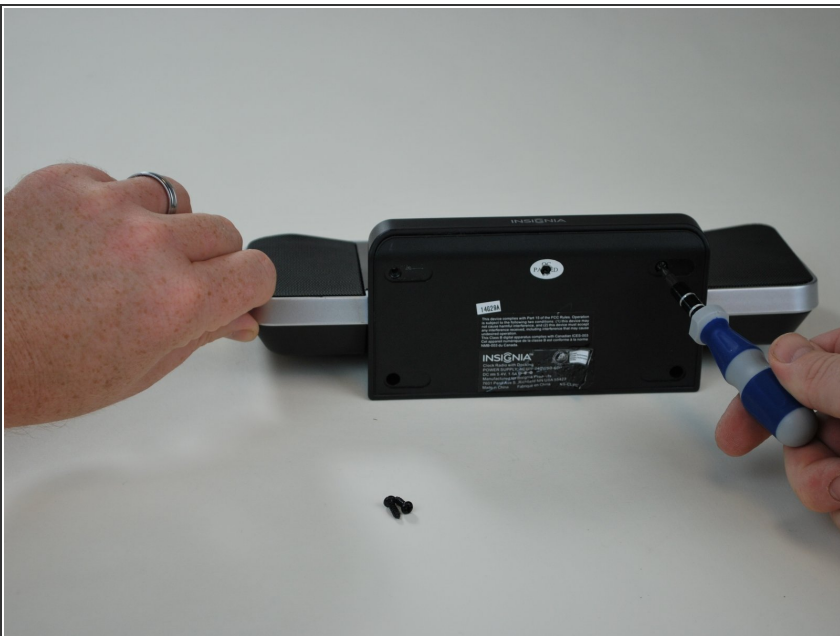
- Using a plastic opening tool, peel off the adhesive gel stoppers

## Step 5



- Continue peeling the rest of the gel stoppers from the bottom of the device.

## Step 6



- Begin unscrewing the six 11mm screws with a Phillips head screw driver.

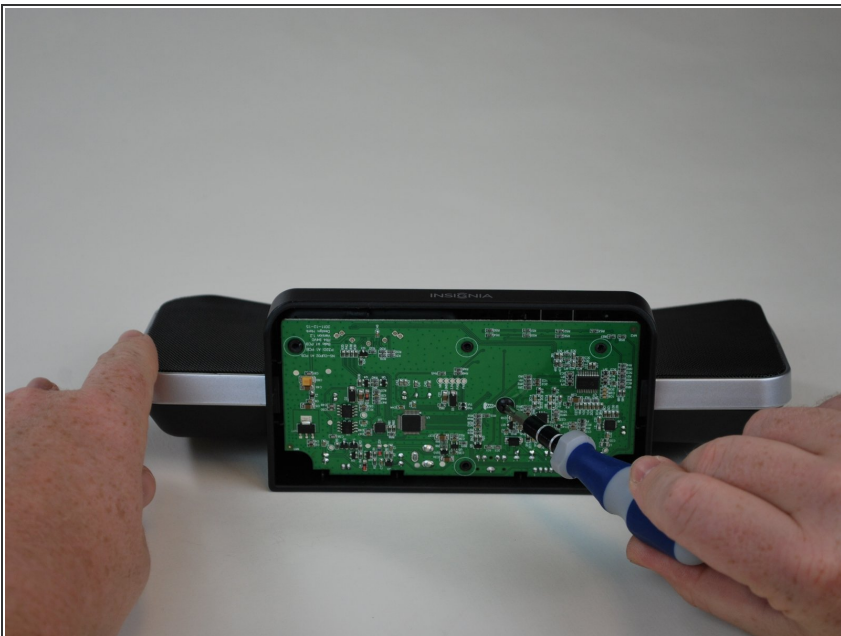


## Step 7



- Once you peel off the bottom from the device, you will see the motherboard.

## Step 8



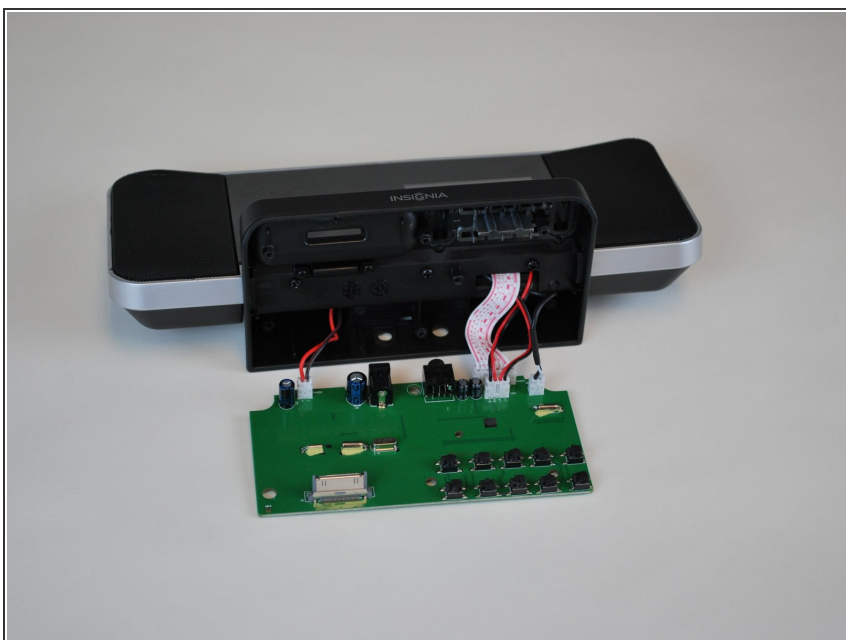
- Unscrew the 9.5mm screw located near the center of the motherboard with a Phillips head screw driver.

## Step 9



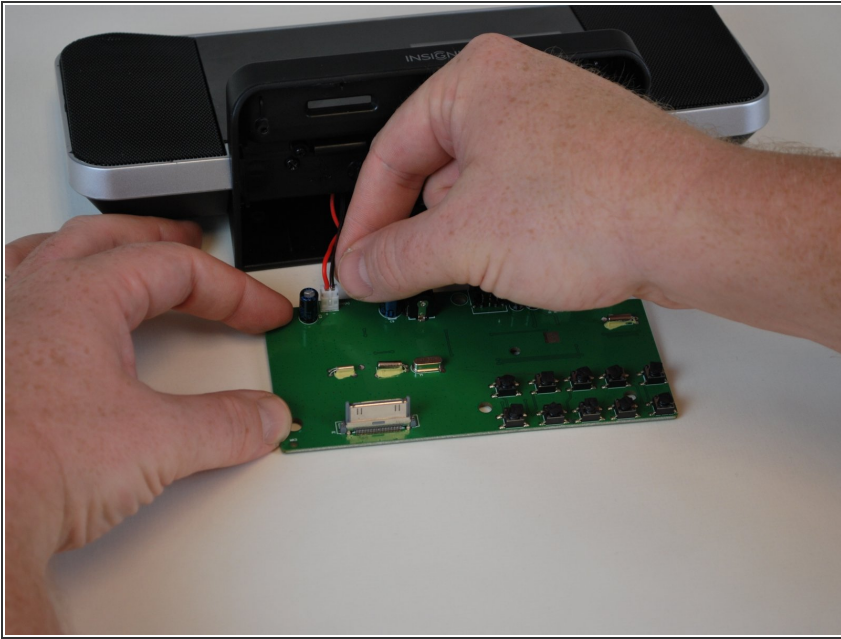
- Lift the motherboard from the device.

## Step 10



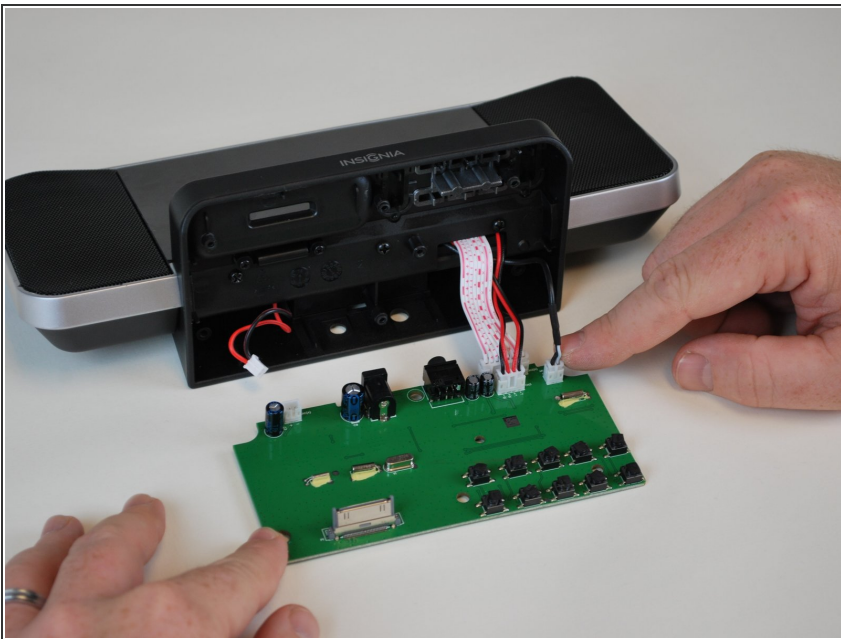
- Locate the four plugs connecting the motherboard to the rest of the device.

## Step 11



- Begin with remove the plug to your left.

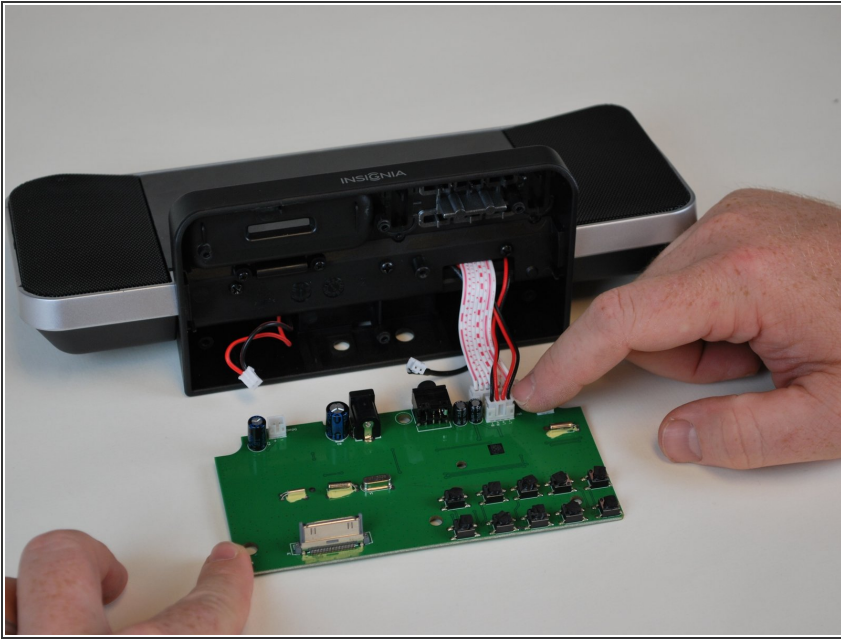
## Step 12



- Remove the plug to your right from the motherboard.

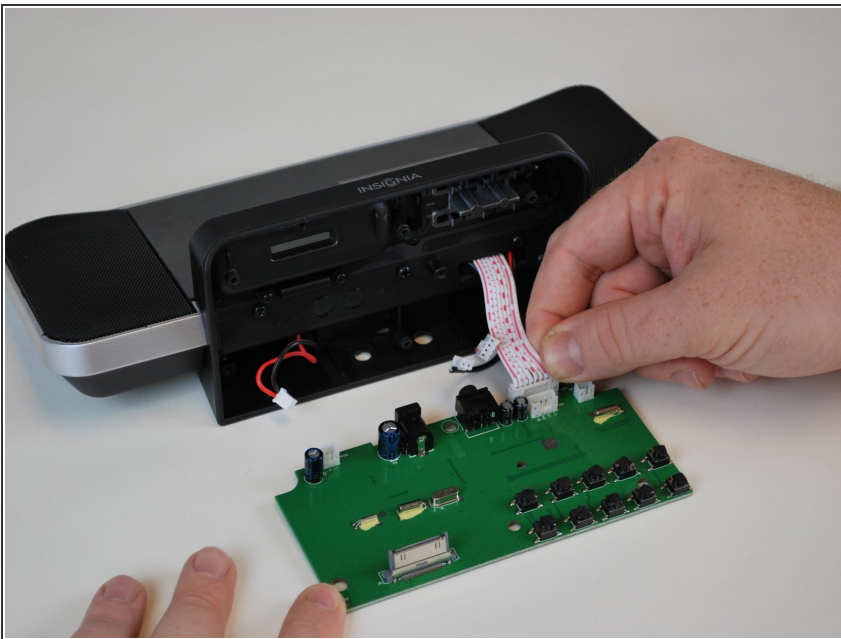


## Step 13



- Remove the plug in the front of the lcd screen plug.

## Step 14



- Remove the LCD screen plug last. Then, follow the following instructions in reverse to replace the old motherboard with the new one.

To reassemble your device, follow these instructions in reverse order.