



Insignia NS-CLIP02 Speaker replacement and troubleshooting

This guide shows how to repair a broken connection on the speaker.

Written By: Aubrey



INTRODUCTION

This guide shows how to locate and repair broken connections to the speakers.



TOOLS:

- [Metal Spudger](#) (1)
 - [Magnetized jeweler's #1 Phillips screwdriver](#) (1)
-

Step 1 — Motherboard



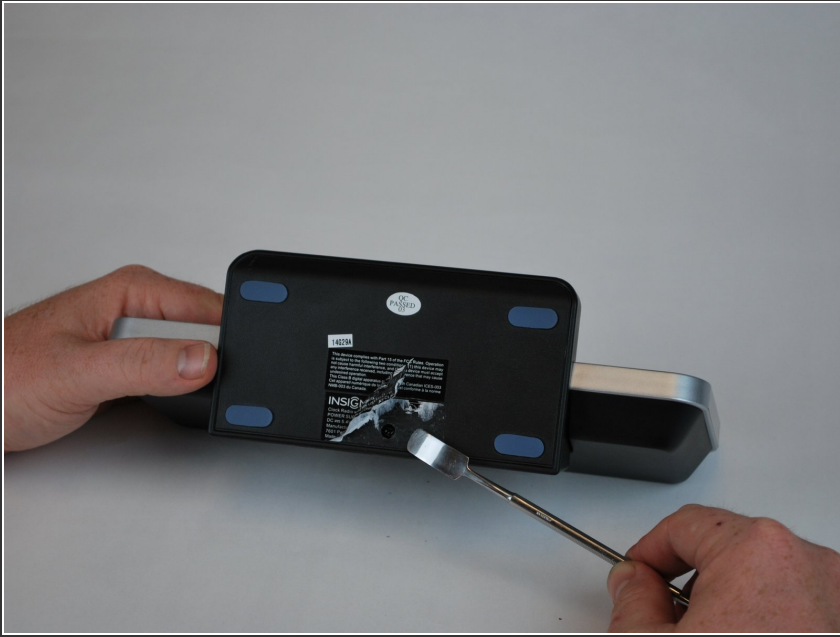
- Locate the bottom of the device.

Step 2



- Begin by using a metal spudger to peel back the adhesive sticker and locate the 11mm screw beneath the sticker.

Step 3



- Locate the 11mm screw beneath the sticker.

Step 4



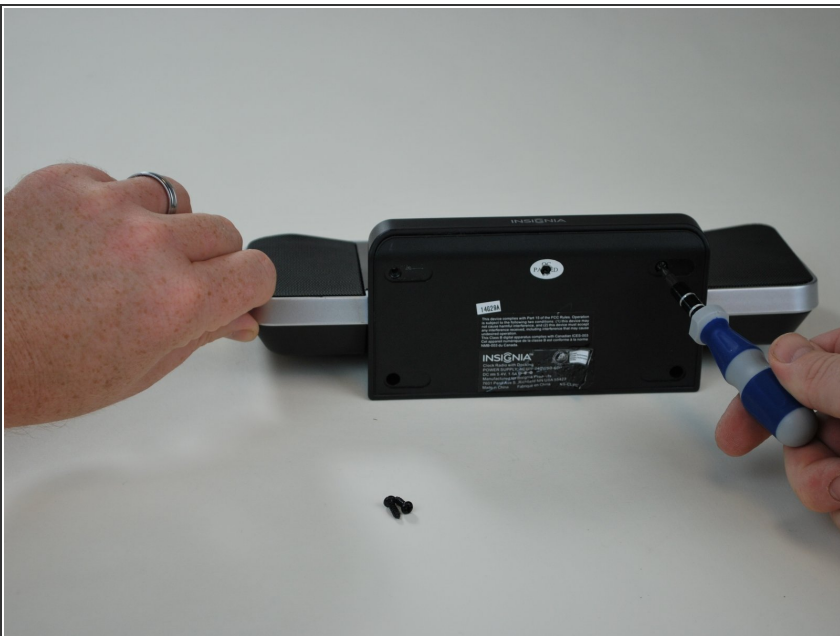
- Using a plastic opening tool, peel off the adhesive gel stoppers

Step 5



- Continue peeling the rest of the gel stoppers from the bottom of the device.

Step 6



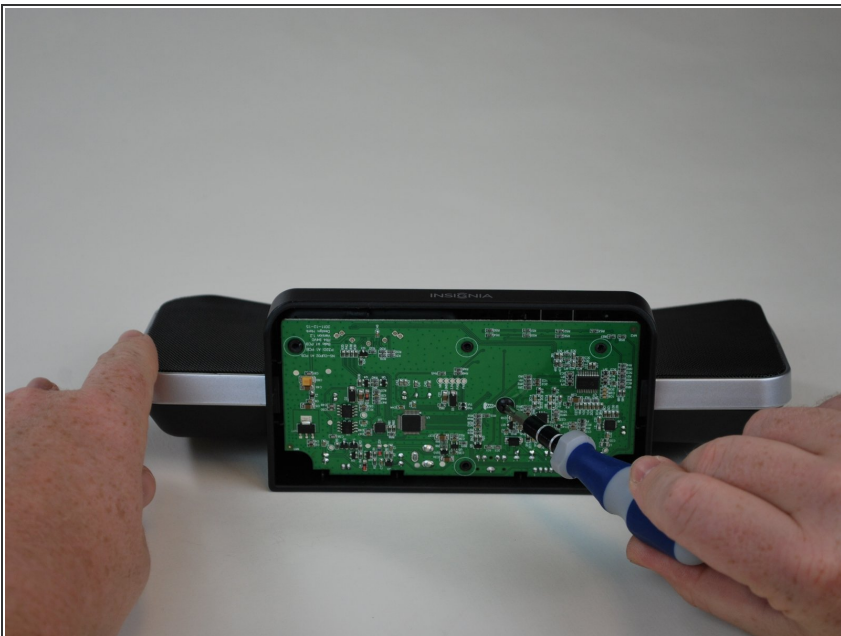
- Begin unscrewing the six 11mm screws with a Phillips head screw driver.

Step 7



- Once you peel off the bottom from the device, you will see the motherboard.

Step 8



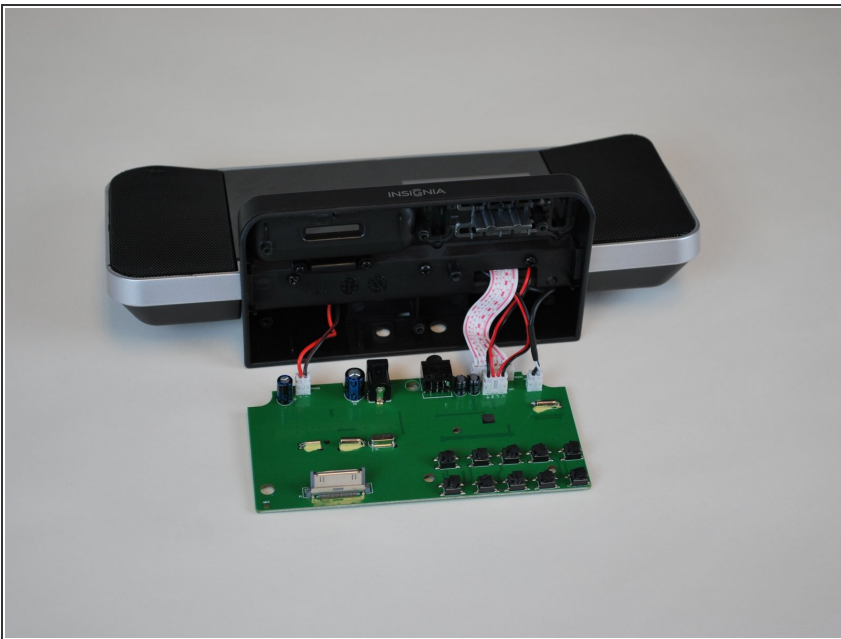
- Unscrew the 9.5mm screw located near the center of the motherboard with a Phillips head screw driver.

Step 9



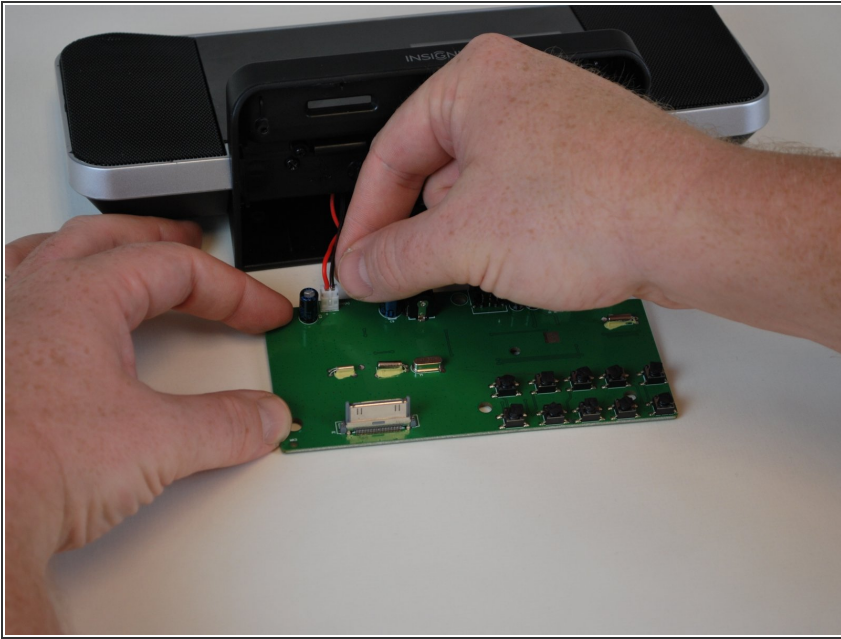
- Lift the motherboard from the device.

Step 10



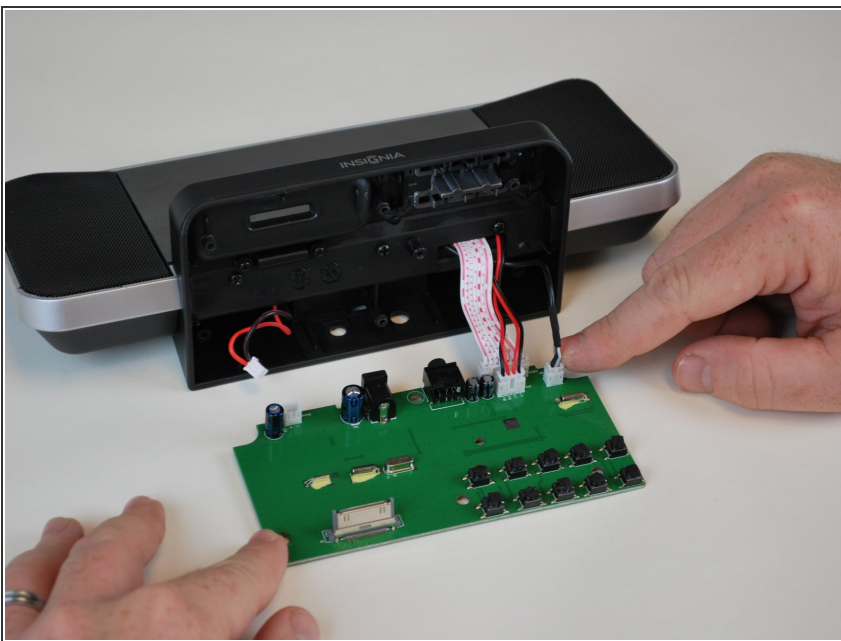
- Locate the four plugs connecting the motherboard to the rest of the device.

Step 11



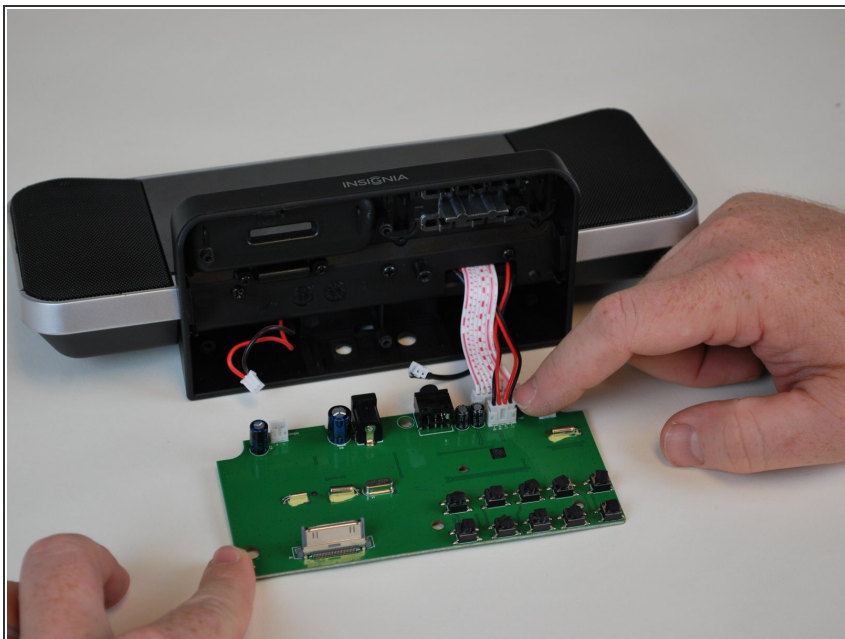
- Begin with remove the plug to your left.

Step 12



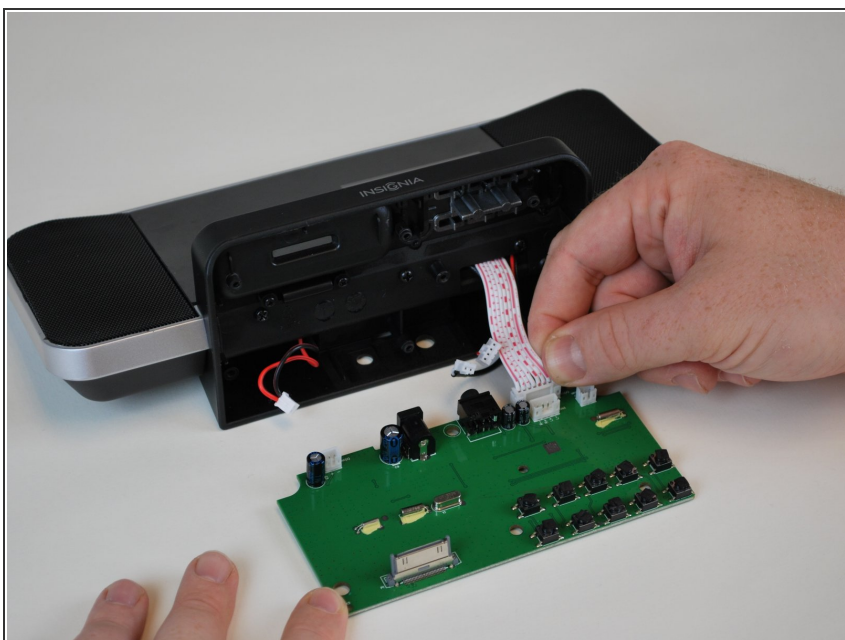
- Remove the plug to your right from the motherboard.

Step 13



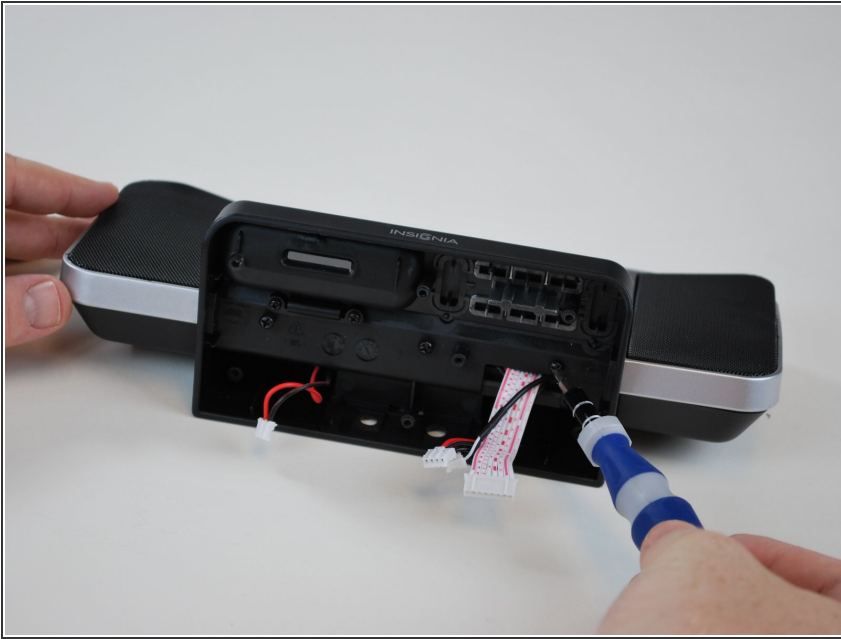
- Remove the plug in the front of the lcd screen plug.

Step 14



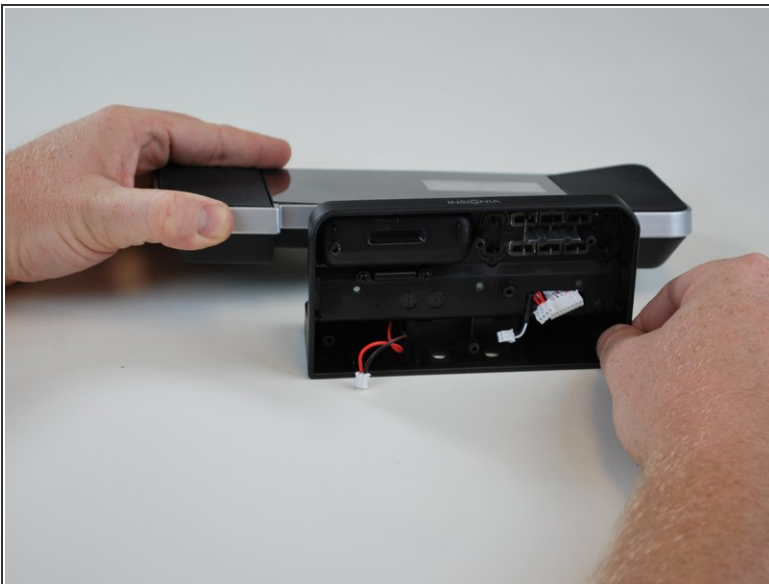
- Remove the LCD screen plug last. Then, follow the following instructions in reverse to replace the old motherboard with the new one.

Step 15 — Speaker



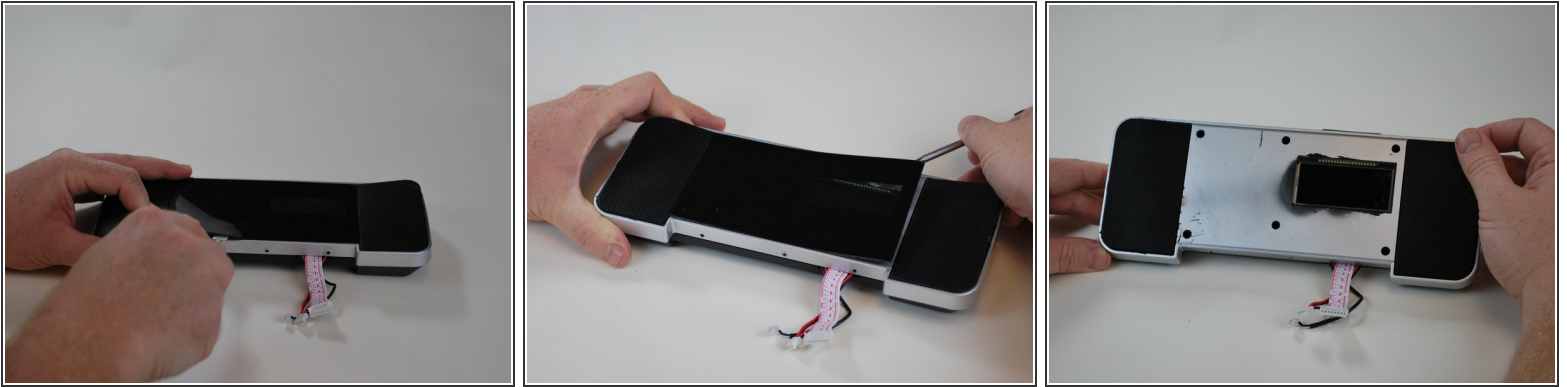
- Remove the three screws located along the center of the base.

Step 16



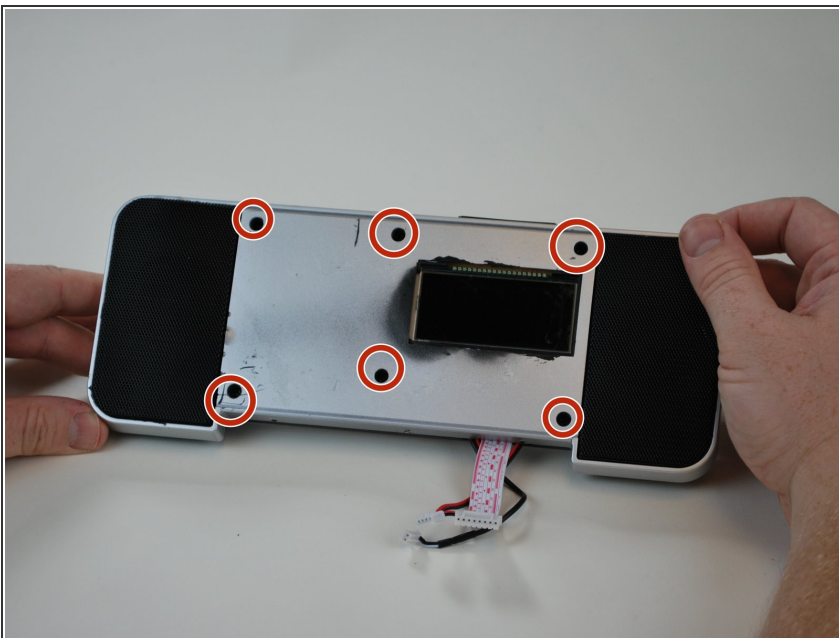
- Remove the base from the display.

Step 17



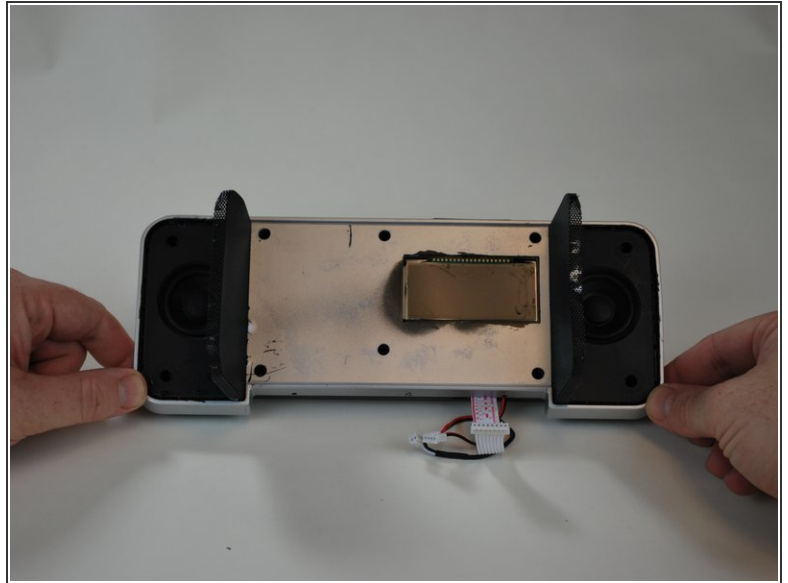
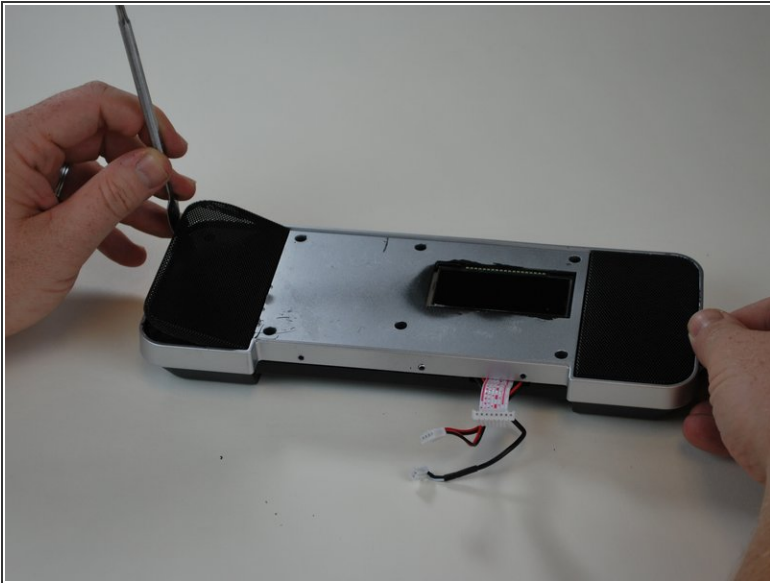
- Using a metal spudger, remove the plastic face plate from the display.

Step 18



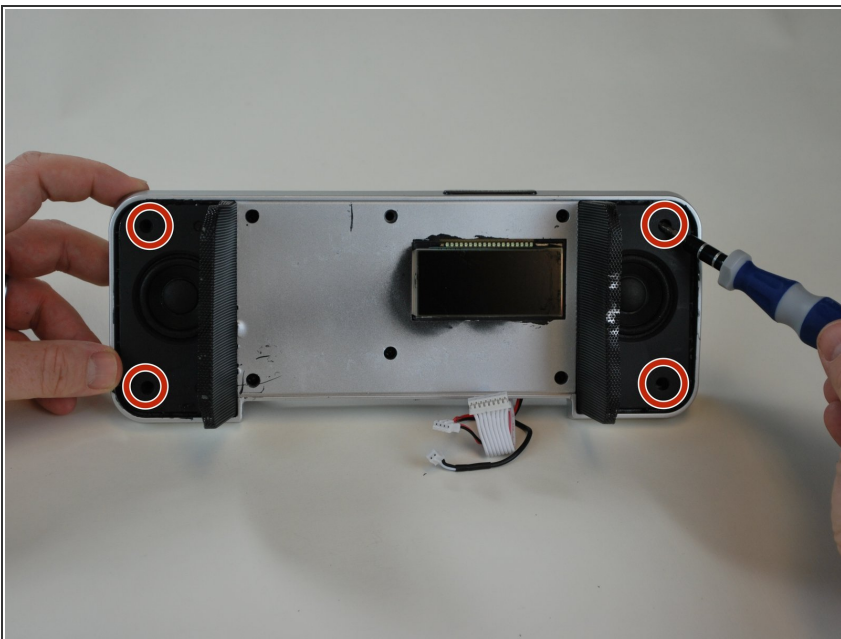
- With a phillips screwdriver, remove the six screws shown here.

Step 19



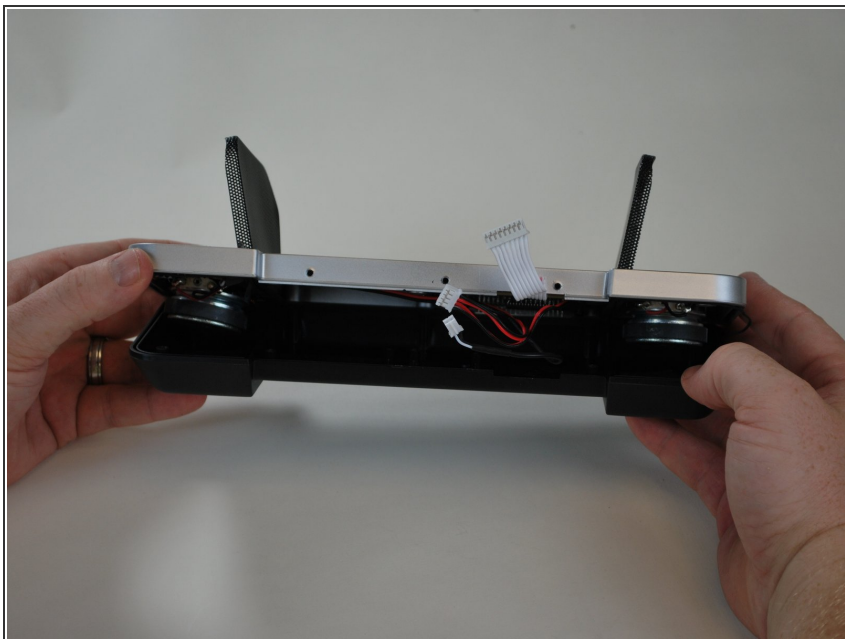
- Next, using the metal spudger, pry the speaker grilles from the display.

Step 20



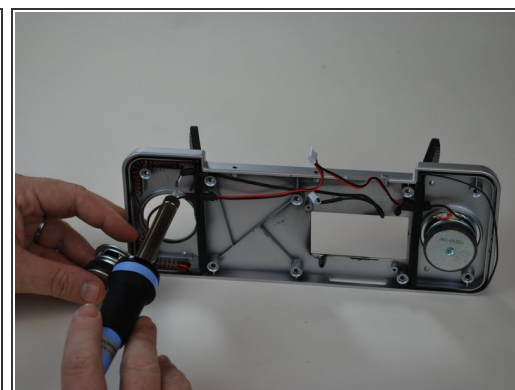
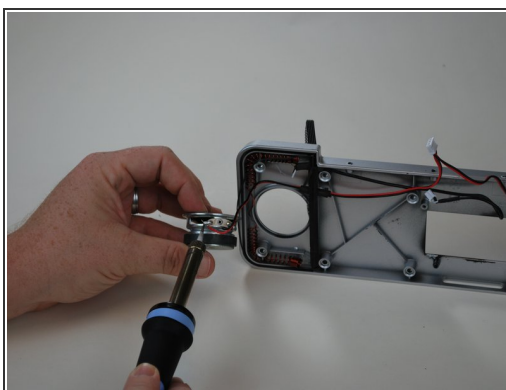
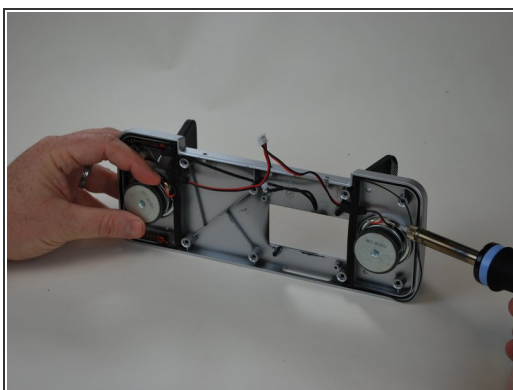
- Using the Phillips screwdriver, remove the four screws seen here.

Step 21




- Separate the two pieces of the display as shown.

Step 22



- You can see that there are several points where connections to the speaker are soldered.

 If all connections are soldered then replacement may be necessary.

To reassemble your device, follow these instructions in reverse order.