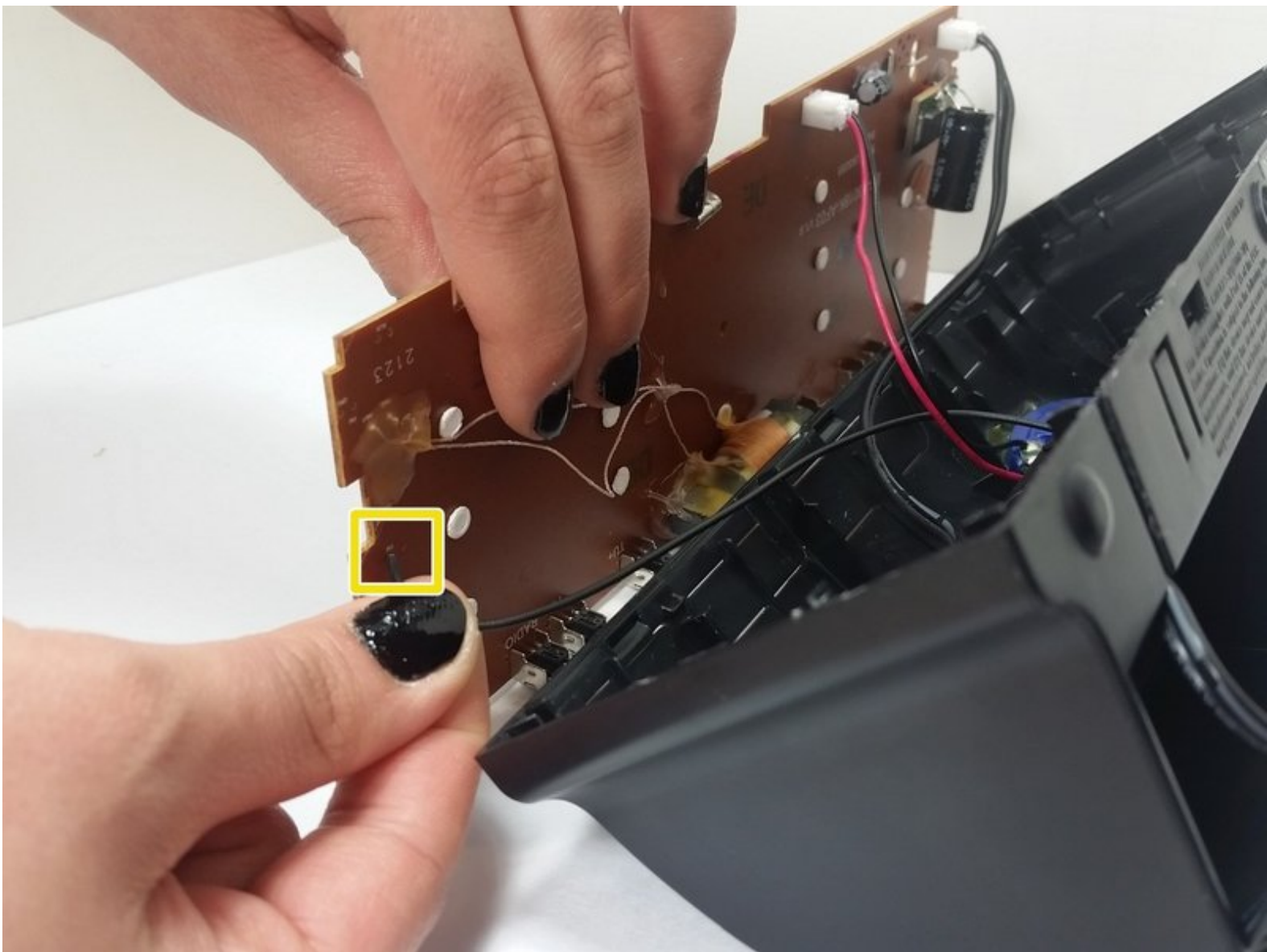




Insignia NS-CLOPP2 Antenna Replacement

This guide will show viewers how to replace the antenna of the Insignia NS-CLOPP2 Digital Clock and AM/FM Radio.

Written By: Dilini De Silva

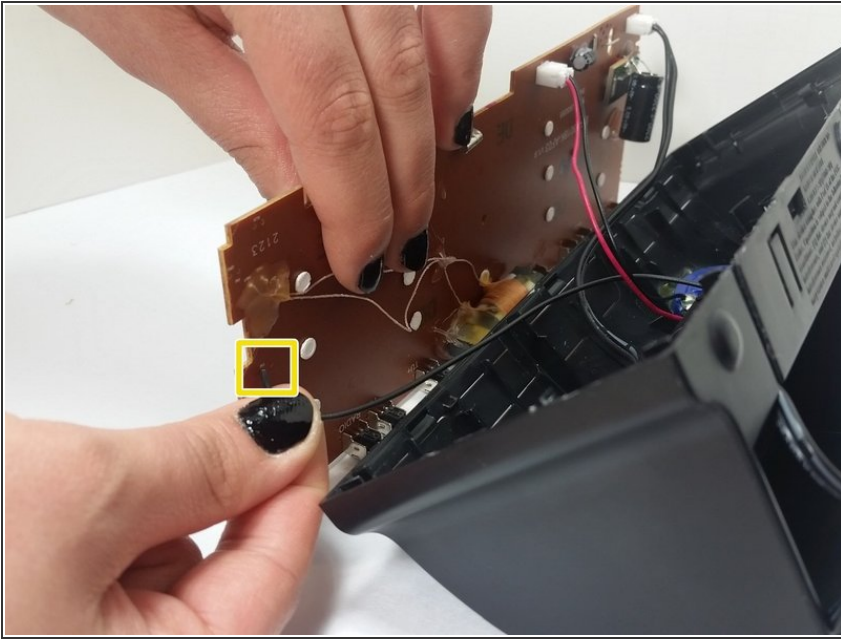




TOOLS:

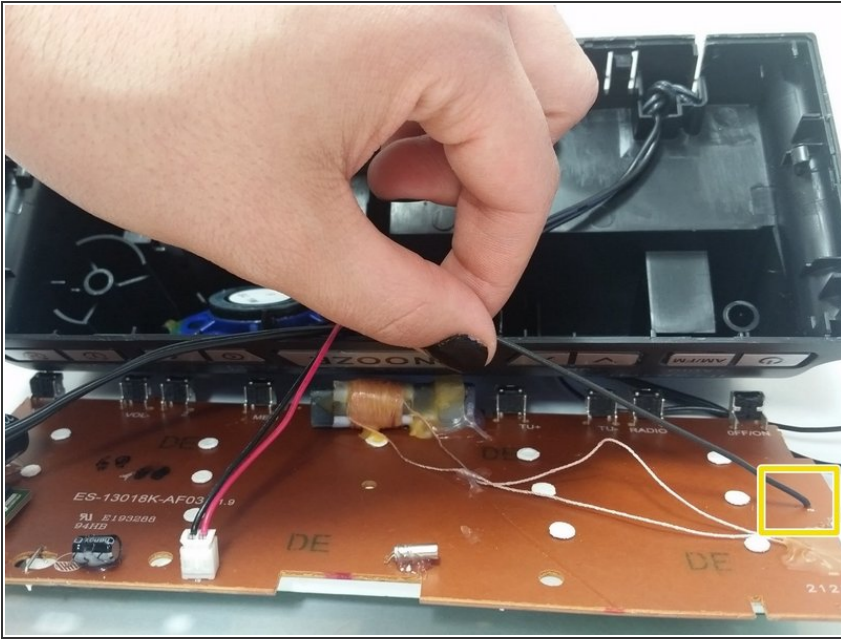
- [Soldering Iron](#) (1)
-

Step 1 — Antenna



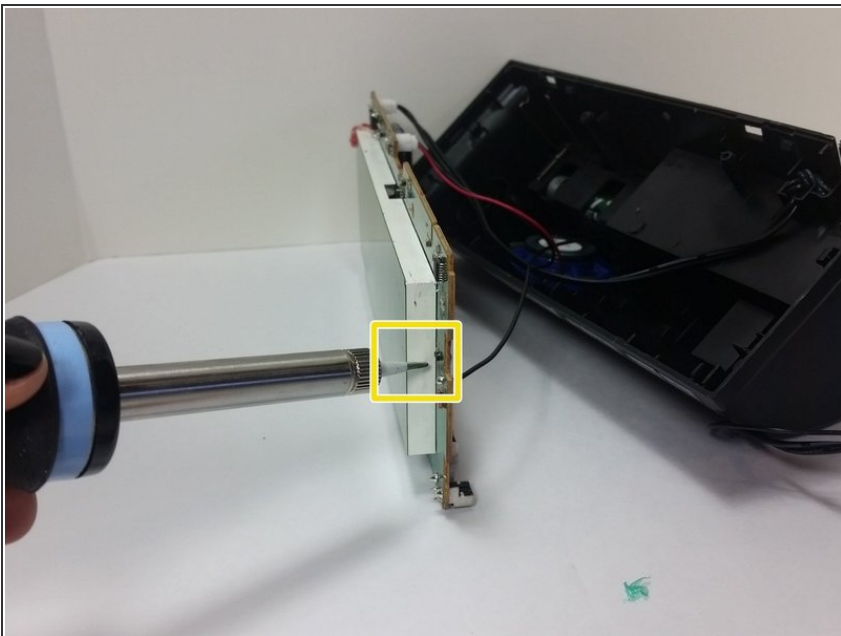
- Follow steps on removing the motherboard as a prerequisite.
- Gently move the motherboard back, revealing the thin black wire that is the antenna. The antenna wire is, on the outside, located on the lower, middle back. Follow the wire from the outside to the inside to make sure it's the correct one.

Step 2



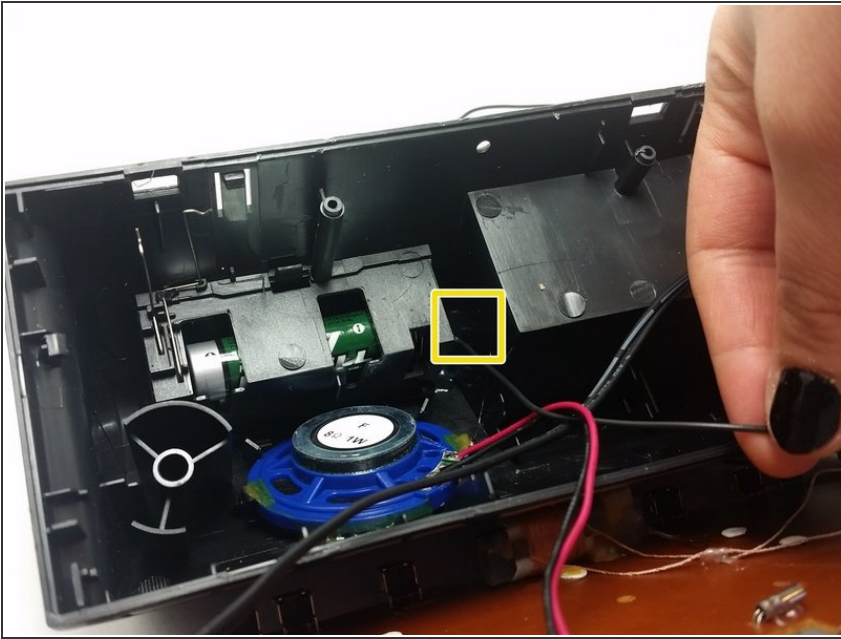
- Pull the wire up, making sure it's connected to the motherboard from the back side. To replace the wire, cut it completely from the motherboard.

Step 3



- To re-attach the antenna cord to the motherboard, use a soldering tool to connect the wire to the same spot it was originally attached to.

Step 4



- Make sure the wire is securely in place in the correct area of the clock, labeled "antenna" from the outside.

To reassemble your device, follow these instructions in reverse order.