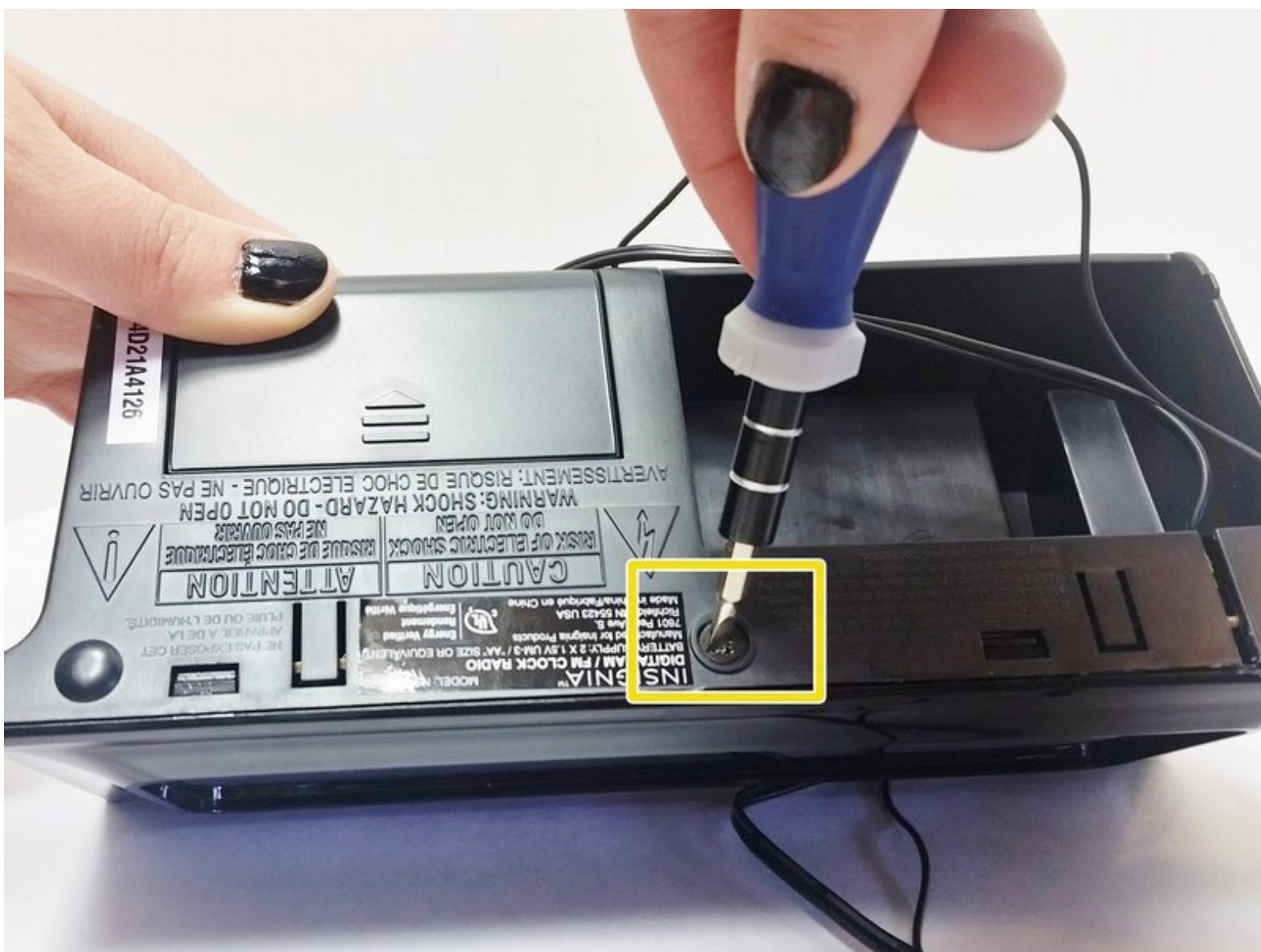




Insignia NS-CLOPP2 Screen Replacement

This guide will show viewers how to replace the front screen of the Insignia NS-CLOPP2 Digital AM/FM Alarm Clock and Radio.

Written By: Dilini De Silva



INTRODUCTION

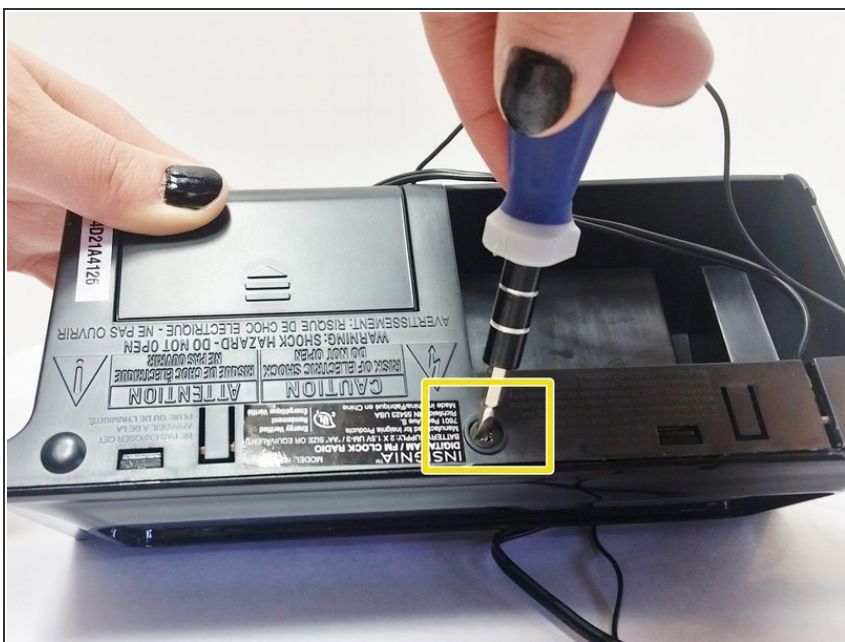
Outline what you are going to teach someone how to do.



TOOLS:

- [Screwdriver](#) (1)
 - [Jimmy](#) (1)
-

Step 1 — Screen



- Turn clock over and remove the 1cm screw, located below the face plate, from the bottom of the clock with a Philips head screw driver.

Step 2



- Begin to pry front screen off with a Jimmy.

Step 3



- Once you are able to create a space in between the device and the front screen, use your hands to continue to pry off the screen. Make sure that all the mini latches surrounding the perimeter have been unlatched, allowing the screen to easily come off.

Step 4



- Once you have undone the latches and pried off the first half of the screen, use your hand to pull off the rest of the screen.
- To reassemble your device, follow these instructions in reverse order.

To reassemble your device, follow these instructions in reverse order.