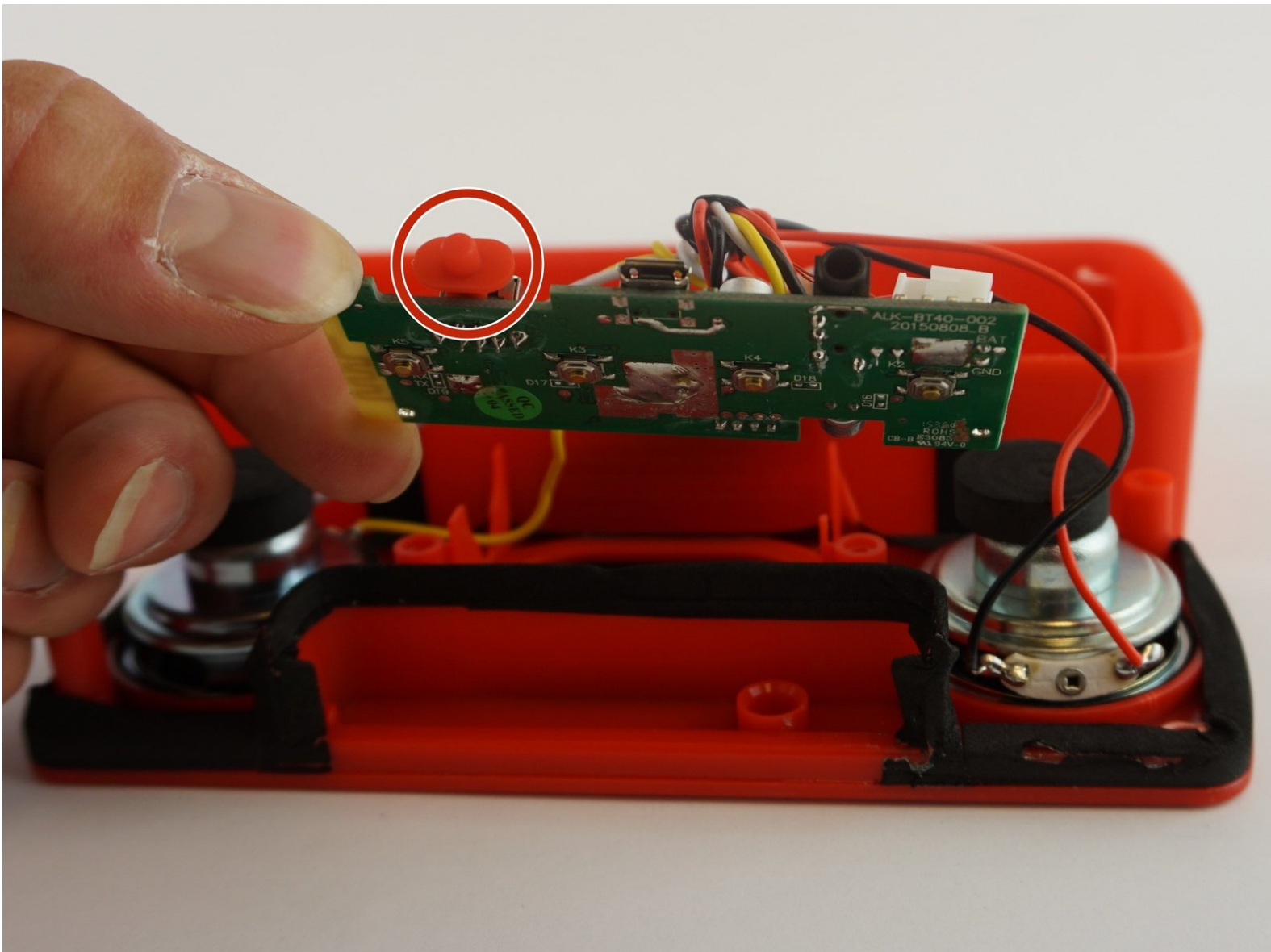




# Insignia NS-CSPBTHOL-R Power Button Replacement

This guide will assist with the replacement of the power button on the Insignia NS-CSPBTHOL-R speaker.

Written By: Judith Villegas



# INTRODUCTION

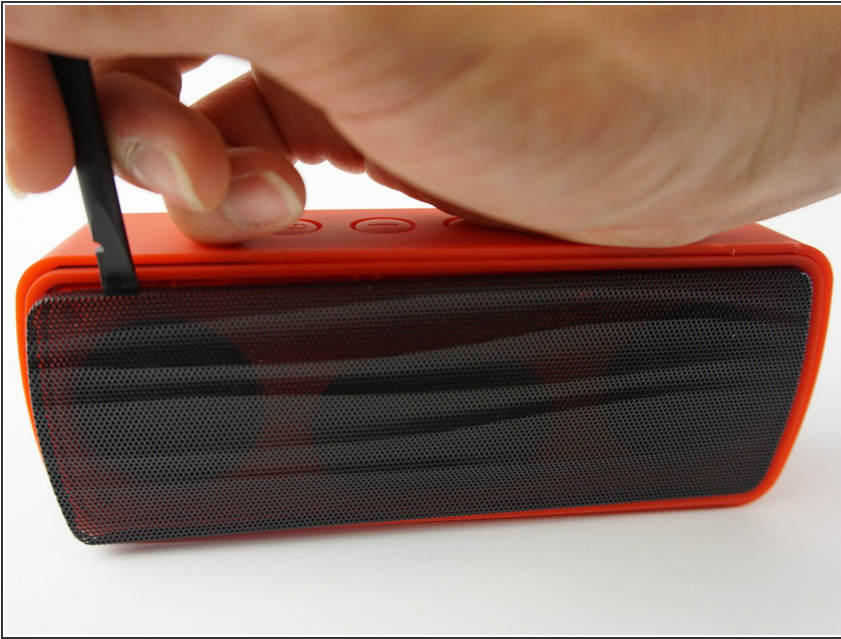
Is the power button no longer powering on your device? This guide will help replace the power button so you can turn your speaker on and off.

---

## TOOLS:

- [Heavy-Duty Spudger](#) (1)
  - [JIS Driver Set](#) (1)
  - [Tweezers](#) (1)
-

## Step 1 — Battery



- Push the Spudger into the crevice between the grated panel of the speaker and the base of the speaker.
- Angle the spudger to create a separation between the grate and the base.

## Step 2



- Slide the spudger along the separation between the grate and the base of the speaker to loosen the grate. Do this to the entire perimeter of the speaker.

## Step 3



- Pull the grated panel off.

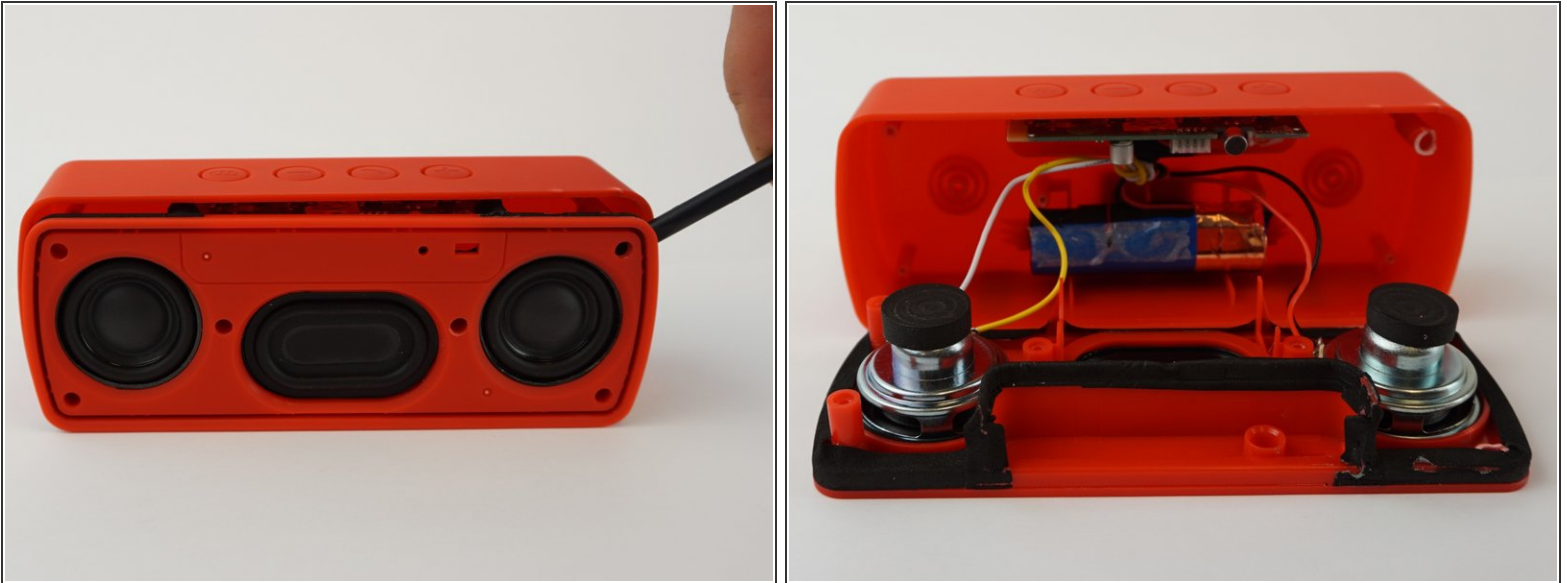
## Step 4



- Remove the six 3mm screws using the J00 JIS screw bit. This will require a long, narrow screwdriver.



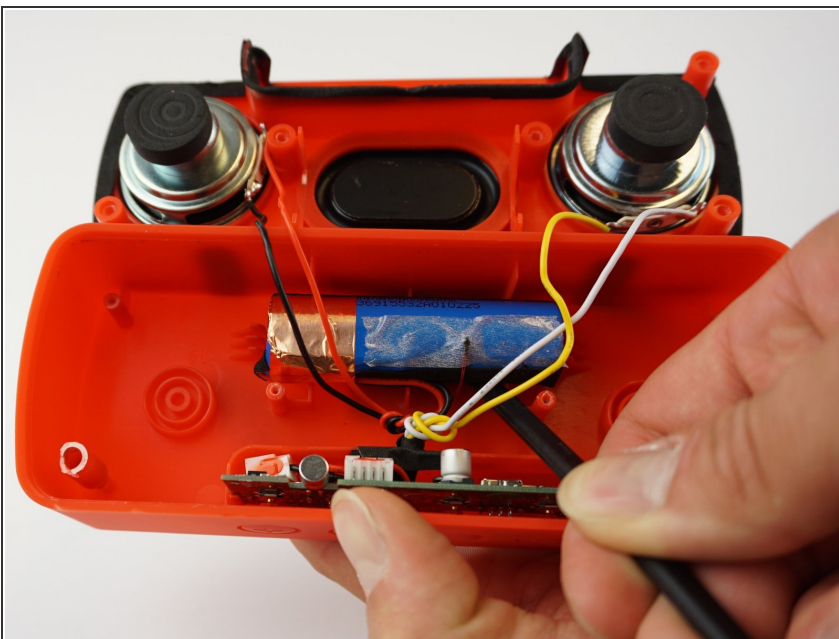
## Step 5



- Push the spudger into the crevice between the base and the face of the speaker and create a separation.
- Slide the spudger along the entire perimeter and gently pull off the face of the speaker.

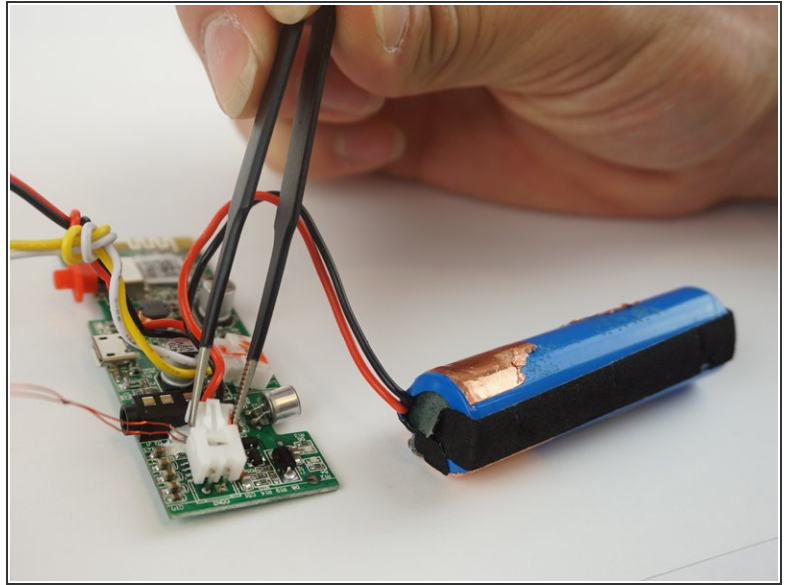
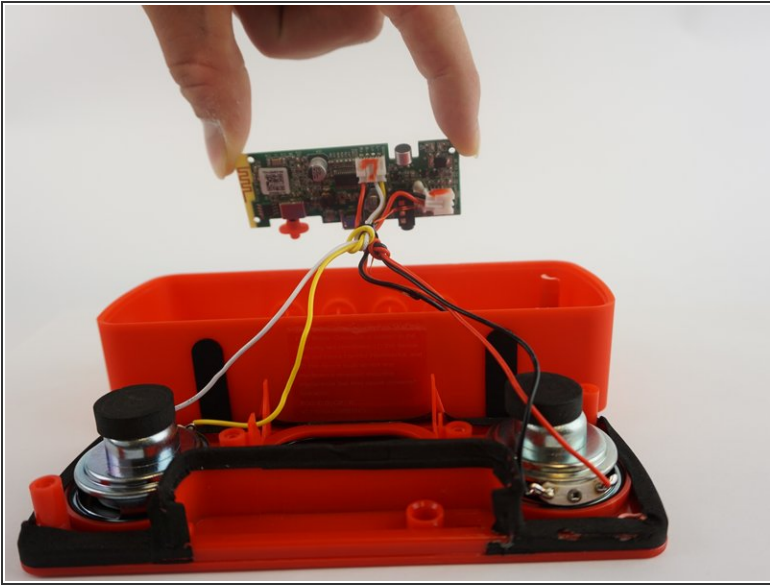
⚠ The two parts are connected by wires, do not rip them apart.

## Step 6



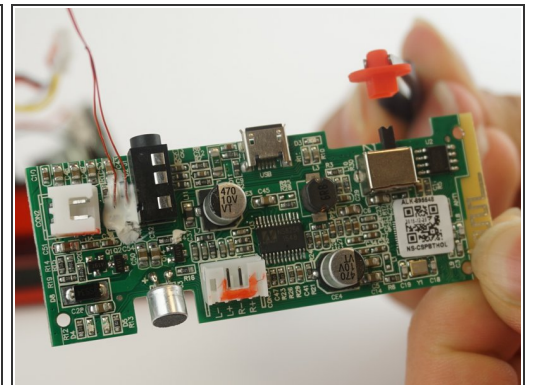
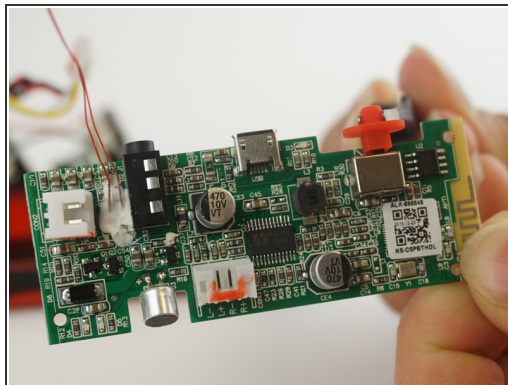
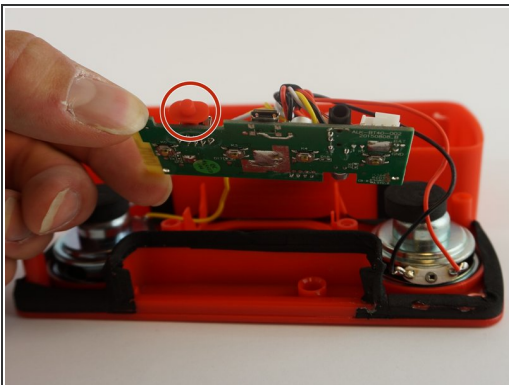
- Use the spudger to release the battery by sliding it underneath the battery to create a separation.
- Remove the battery.

## Step 7



- Pull the motherboard from the base of the speaker.
- Using tweezers, squeeze and pull on the white plastic clip that connects the battery wires to the motherboard.
- Unclip the battery from the motherboard.

## Step 8 — Power Button



- Using tweezers, detach the power button from the mother board.

To reassemble your device, follow these instructions in reverse order.