



Insignia NS-CSPBTHOL-R Speakers Replacement

Replacement guide for the speakers in the Insignia NS-CSPBTHOL-R Bluetooth speaker.

Written By: Lheessis Ruiz



INTRODUCTION

If your speakers no longer sound strong/clear or they stopped producing sound, you may need to replace them. Use this guide to help you replace the speakers.



TOOLS:

- [Heavy-Duty Spudger](#) (1)
 - [JIS Driver Set](#) (1)
-

Step 1 — Speakers



- Insert the Spudger between the grated panel and the base of the speaker.

Step 2



- Pull the grated panel off

Step 3



- Remove the six 3mm screws using the J00 JIS screw bit. This will require a long, narrow screwdriver.

Step 4



- Insert the Spudger between the corners of base and the face of the speaker to open the device.
- The screw on the upper right corner may be difficult to take out. If you cannot take it out with a screwdriver, using force to pull the face of the speaker apart may break the plastic that surrounds the screw.

Step 5



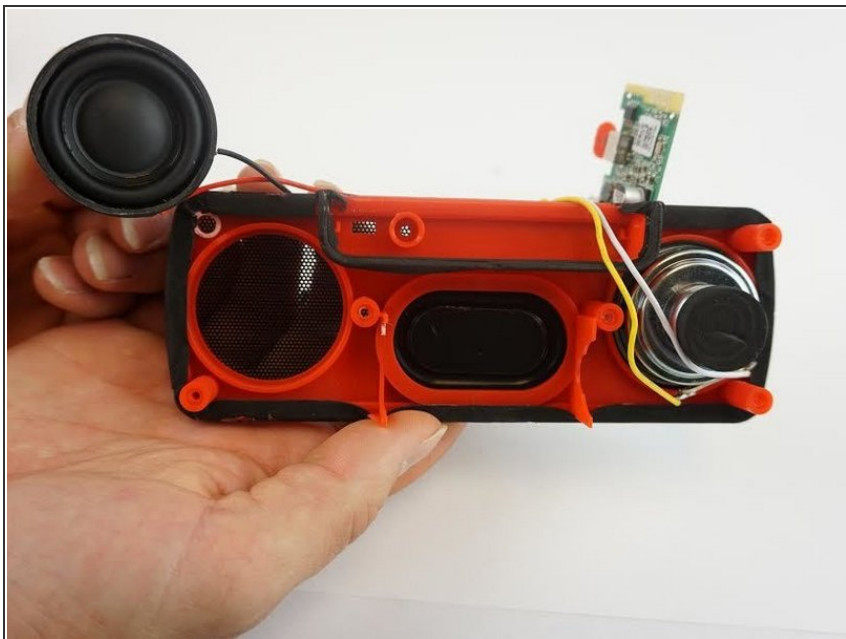
- Remove one speaker at a time

Step 6



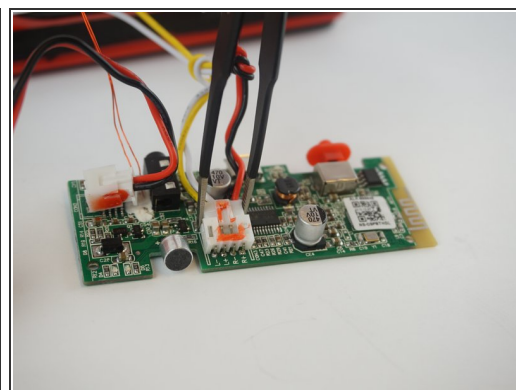
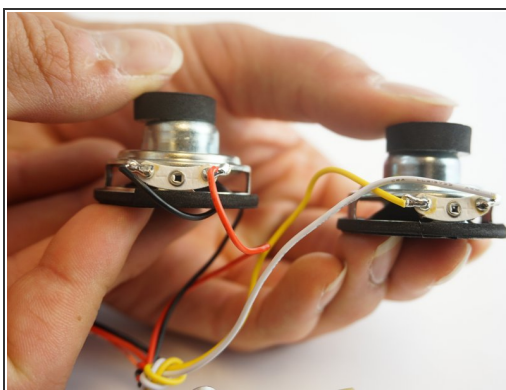
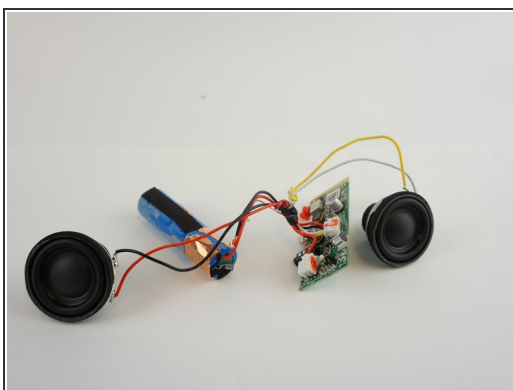
- Grab the back piece of the speaker and gently pull upward.

Step 7



- Remove speakers gently one at a time.

Step 8



- Using blunted tip tweezers, squeeze and pull on the white plastic clip. This will separate the speaker's wires from the motherboard.

 The wires are connected to the white plastic clip that is attached to the motherboard.

To reassemble your device, follow these instructions in reverse order.