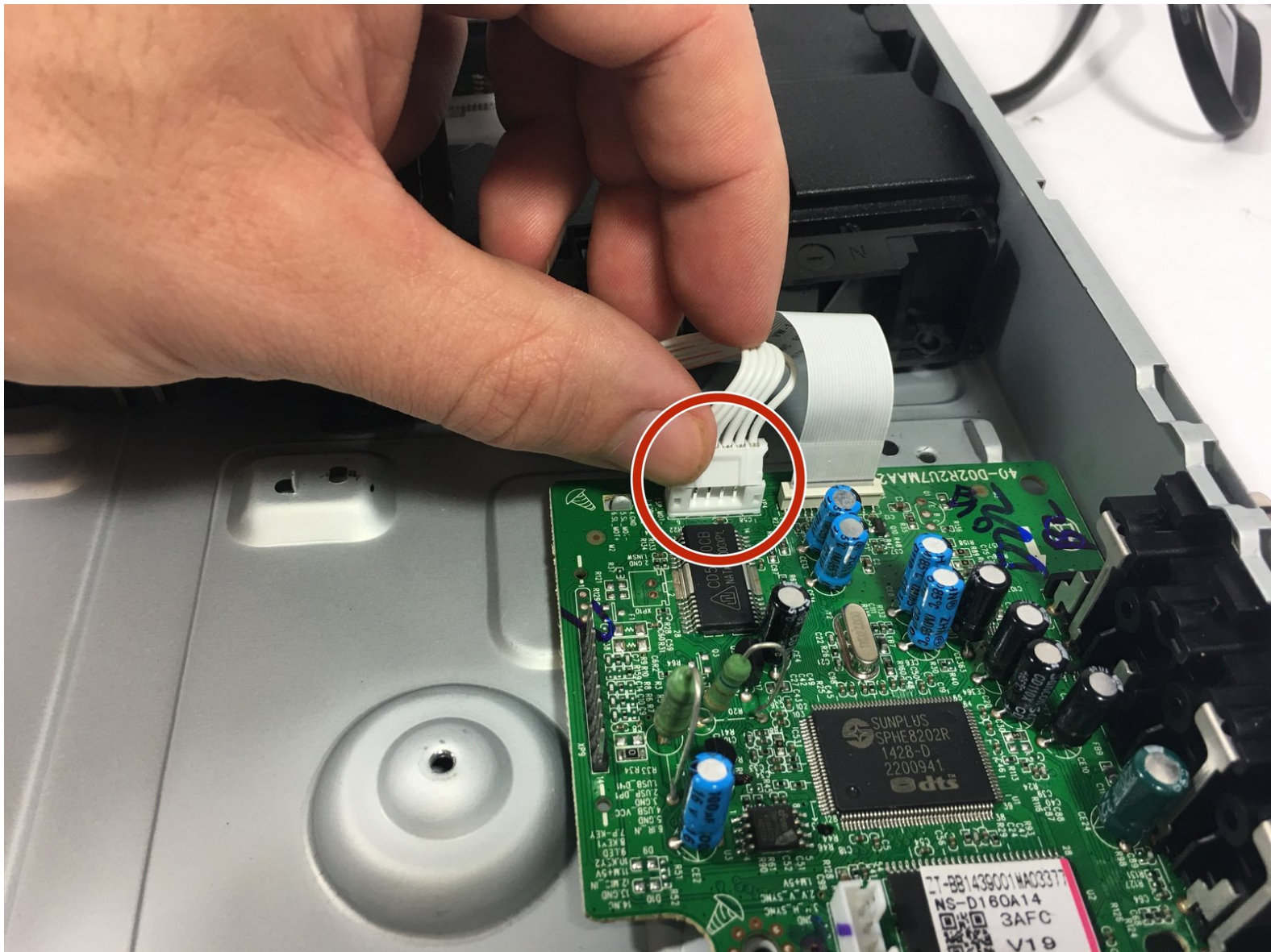




Insignia NS-D160A14 Optical Drive Replacement

This guide details the removal and replacement of the Insignia NS-D160A14 optical drive.

Written By: Ian Hanken



INTRODUCTION

This guide will teach you how to remove the optical drive from the Insignia NS-D160A14 in case it is damaged.

The optical drive will be connected to the AV board via white cables. You will need to remove the case and front plate of the DVD player to remove the drive from the DVD player.

Lets get started!



TOOLS:

- [Phillips #2 Screwdriver](#) (1)
-

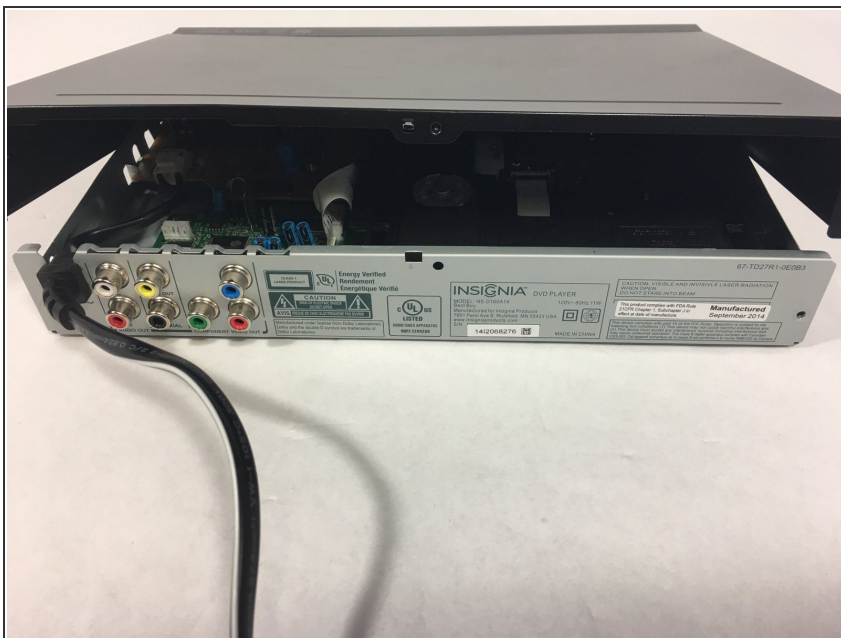
Step 1 — Outer Case



! Unplug the power cord before proceeding to open the DVD player's enclosure.

- Remove the two 7mm Phillips #2 screws from the back of the DVD player.

Step 2



- Carefully lift the outer case up, starting from the back.
- i** Removing the outer case may require some force, and you will need to get the case into an angled position compared to the rest of the DVD player before it can be completely separated.

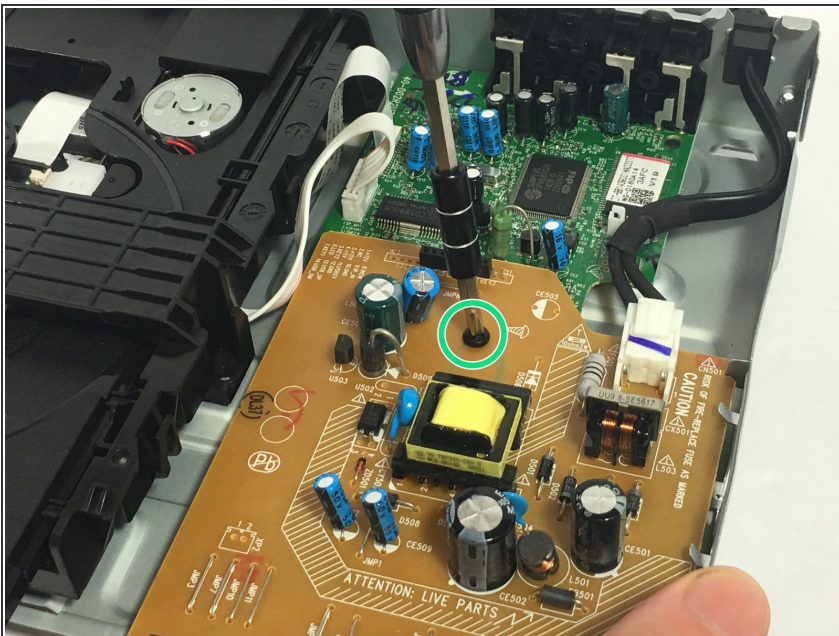
Step 3 — Front Panel



- Unhook the 4 hooks on the main casing.
 - There is one hook on the top of the casing, one on the bottom, and one on each side.

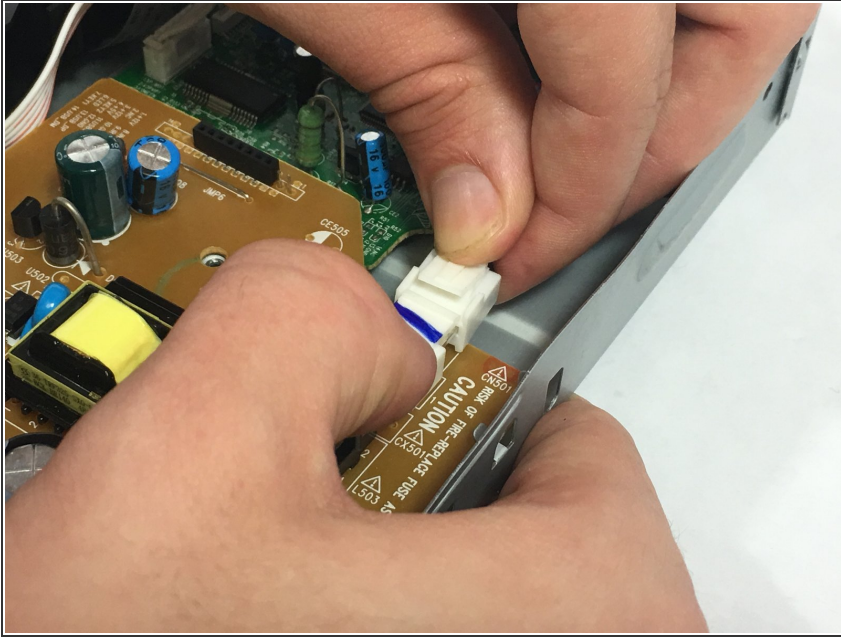
⚠ These hooks are brittle and can easily break.

Step 4 — Motherboard



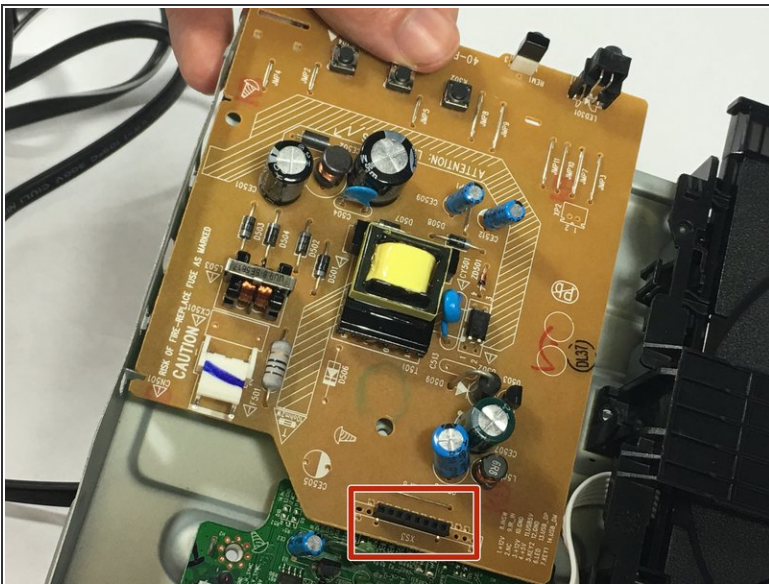
- Remove the central 7 mm screw holding the motherboard in place.
- ⚠ Be sure to ground yourself before manipulating the motherboard. A static shock could render one or more components on the motherboard useless.

Step 5



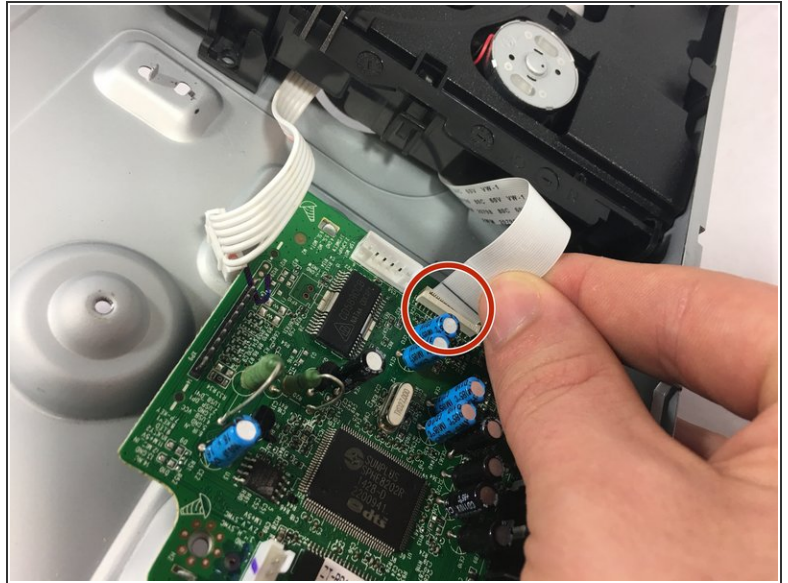
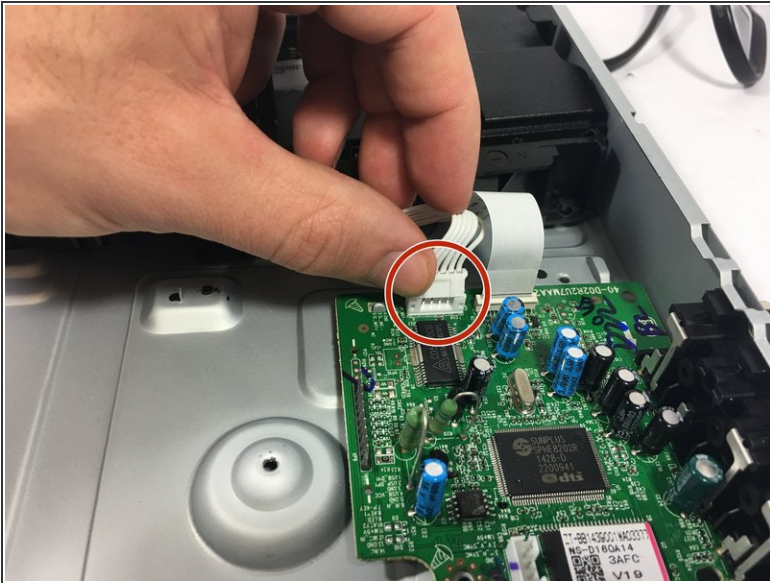
- Disconnect the white power cord connector from the motherboard.

Step 6



- Keeping the 8-pin connector as straight as possible, lift the motherboard out of case.
 - ⓘ You may need to bend the side of the case **slightly** to give the motherboard room to be lifted out.

Step 7 — Optical Drive



- Disconnect the white cables connected to the optical drive from the A/V board using your fingers.
- ⚠ Be careful when removing the cables on the A/V board. Don't put too much pressure on the wires or the wires could be damaged.

Step 8



- After removing the white wires connected to the A/V board, the optical drive should slide out of the slot.

To reassemble your device, follow these instructions in reverse order.