



# Insignia NS-DS9PDVD15 Disc Tray Replacement

In this tutorial the user will be able to replace the disk tray on their Insignia NS-DS9PDVD15.

Written By: Conner Kaer



---

## INTRODUCTION

In this tutorial the user will be able to replace the disc tray on their Insignia NS-DS9PDVD15.

---



### TOOLS:

- [JIS #000 Screwdriver](#) (1)
  - [iFixit Opening Tools](#) (1)
-

## Step 1 — Bottom Cover



- Turn the power off. Slide the power button to OFF.

## Step 2



- Unplug AC adapter from car cigarette lighter.



## Step 3



- Make sure there is no DVD or CD in the disc tray

## Step 4



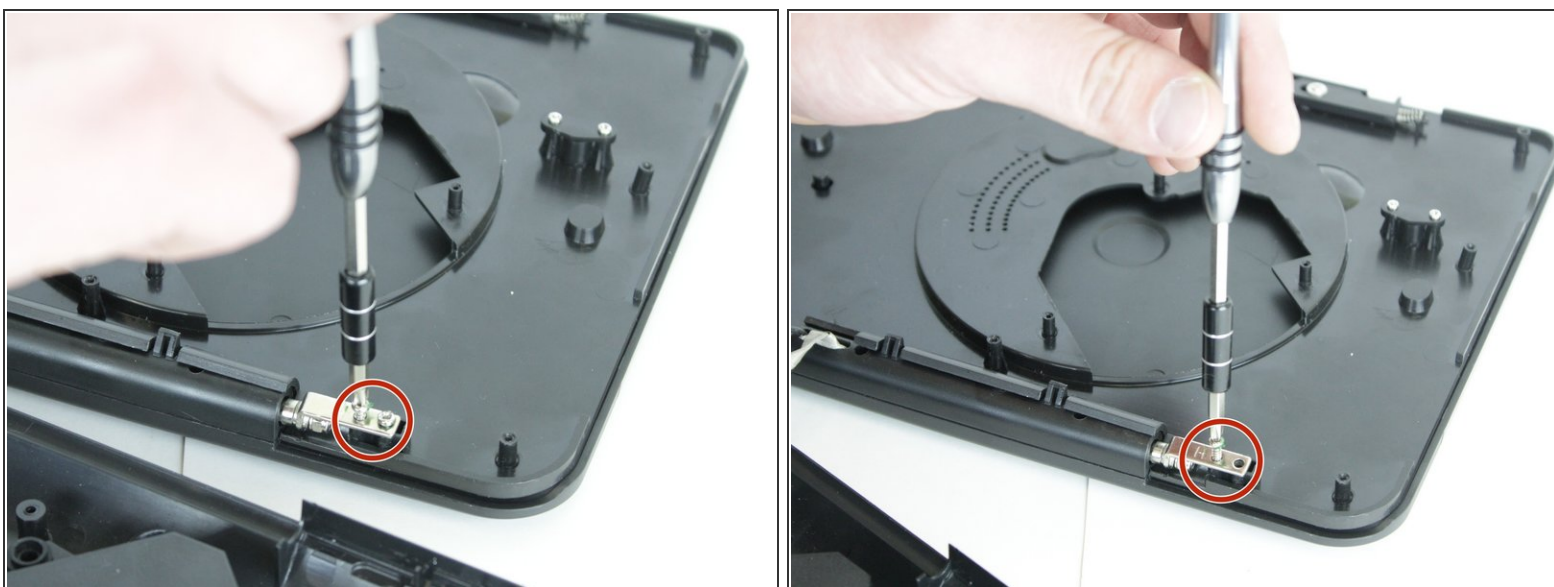
- Unscrew the nine 9mm screws with a JIS #000 screwdriver.

## Step 5



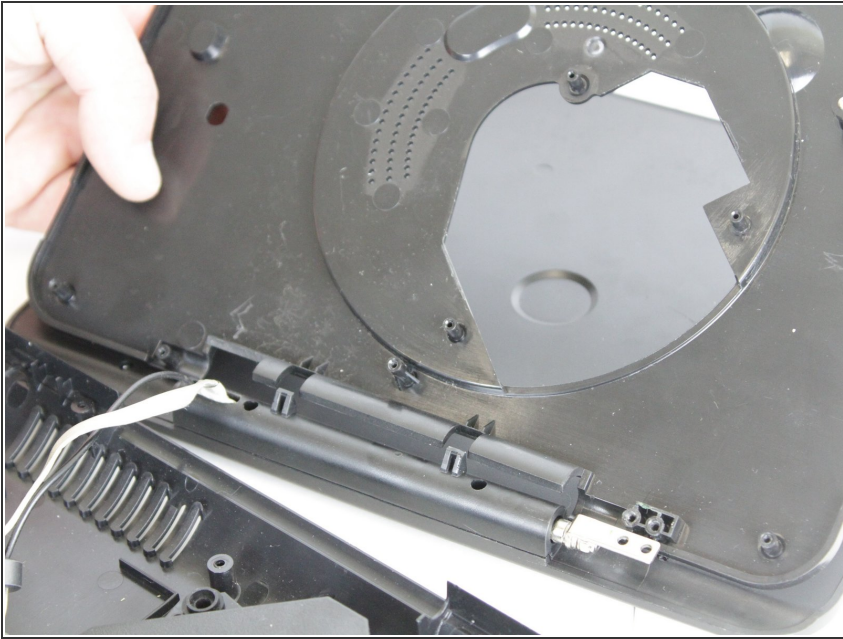
- Pry off back panel with prying tool, then remove by hand.

## Step 6 — Disc Tray



- After the back is removed and the disk tray is loose from the bottom, locate the two, 3 mm screws that hold the tray to the hinge.
- Unscrew them with the JIS #000 screwdriver.

## Step 7



- Slide the tray up and off of the hinge completely.

To reassemble your device, follow these instructions in reverse order.