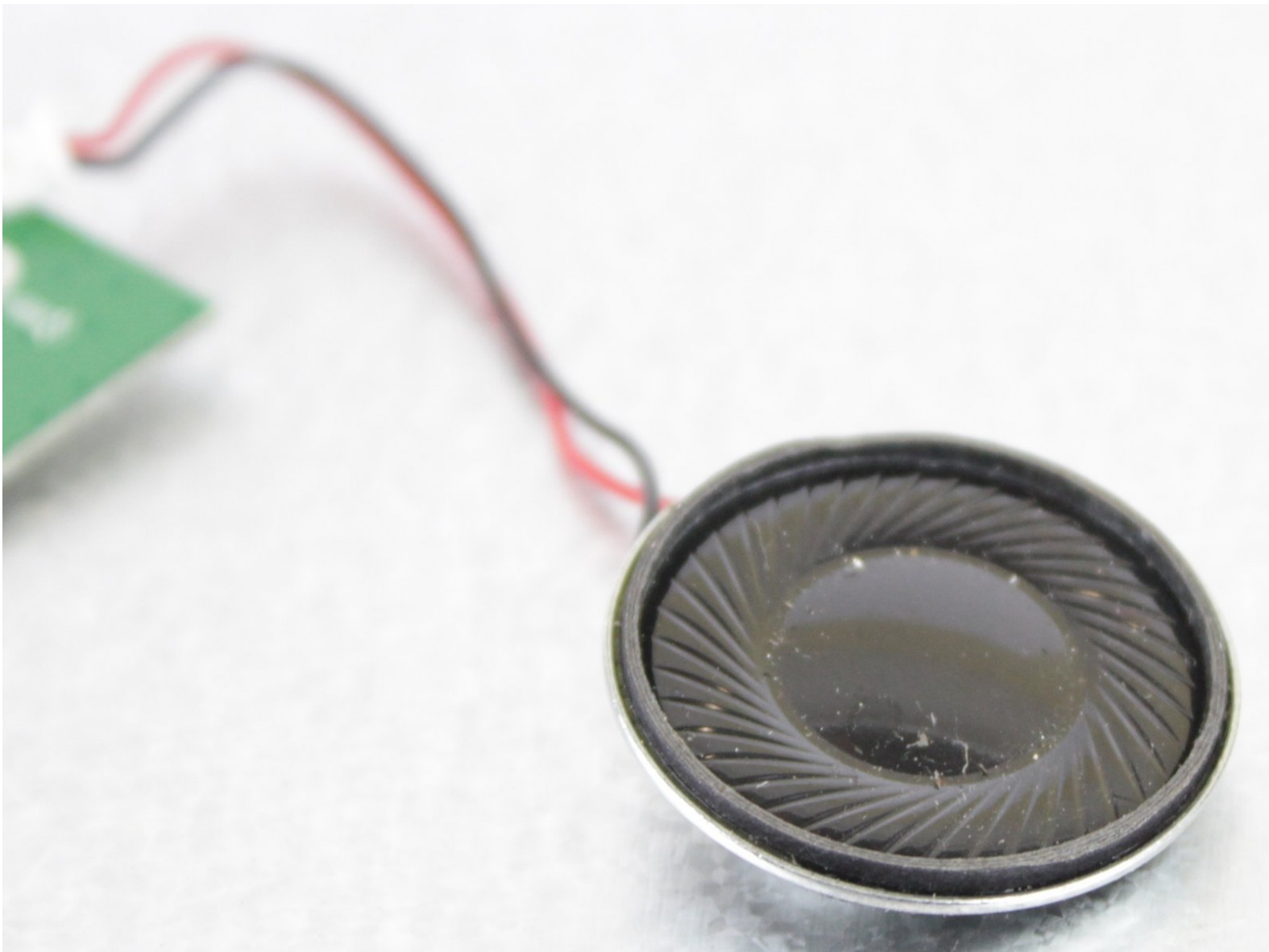




Insignia NS-DS9PDVD15 Speaker Replacement

This guide shows how to replace the speakers on the Insignia NS-DS9PDVD15

Written By: Johnny Rozo



INTRODUCTION

This guide shows how to replace the speakers on the Insignia NS-DS9PDVD15.



TOOLS:

- [JIS #000 Screwdriver](#) (1)
 - [iFixit Opening Tools](#) (1)
-

Step 1 — Bottom Cover



- Turn the power off. Slide the power button to OFF.

Step 2



- Unplug AC adapter from car cigarette lighter.

Step 3



- Make sure there is no DVD or CD in the disc tray

Step 4



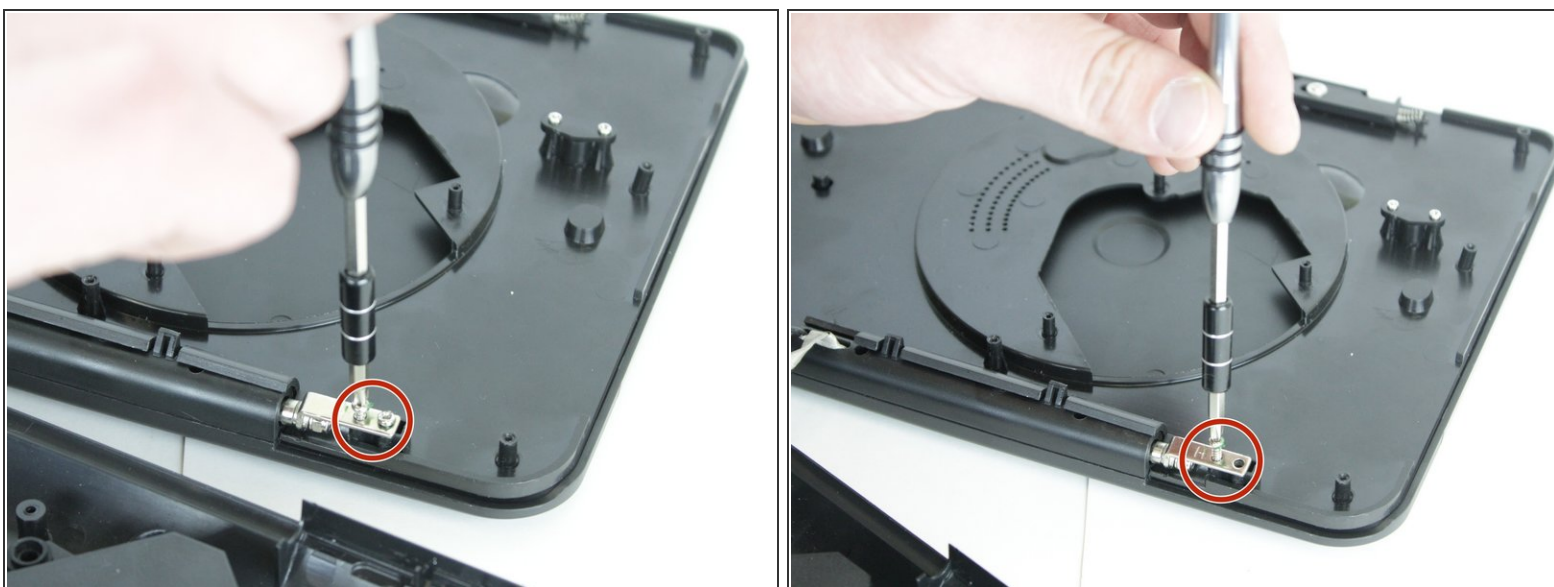
- Unscrew the nine 9mm screws with a JIS #000 screwdriver.

Step 5



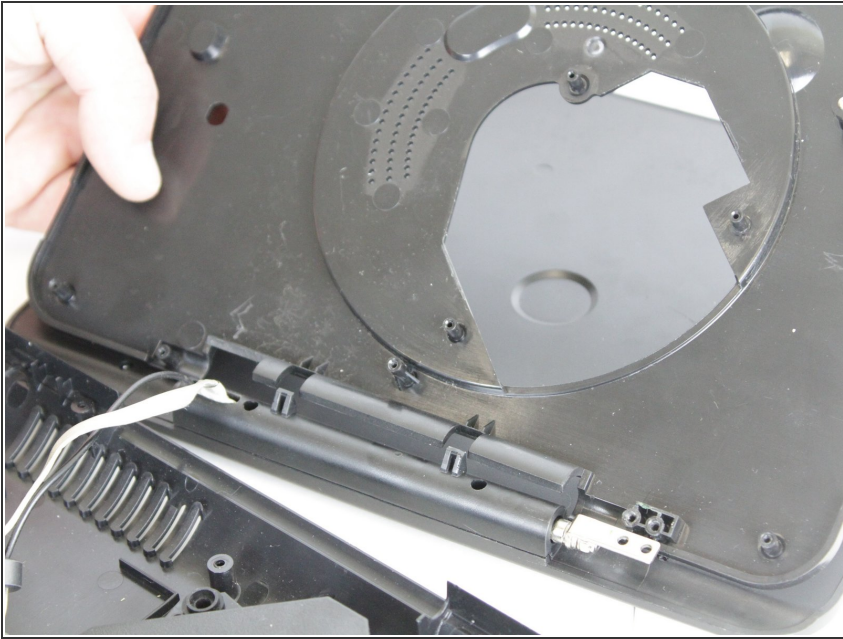
- Pry off back panel with prying tool, then remove by hand.

Step 6 — Disc Tray



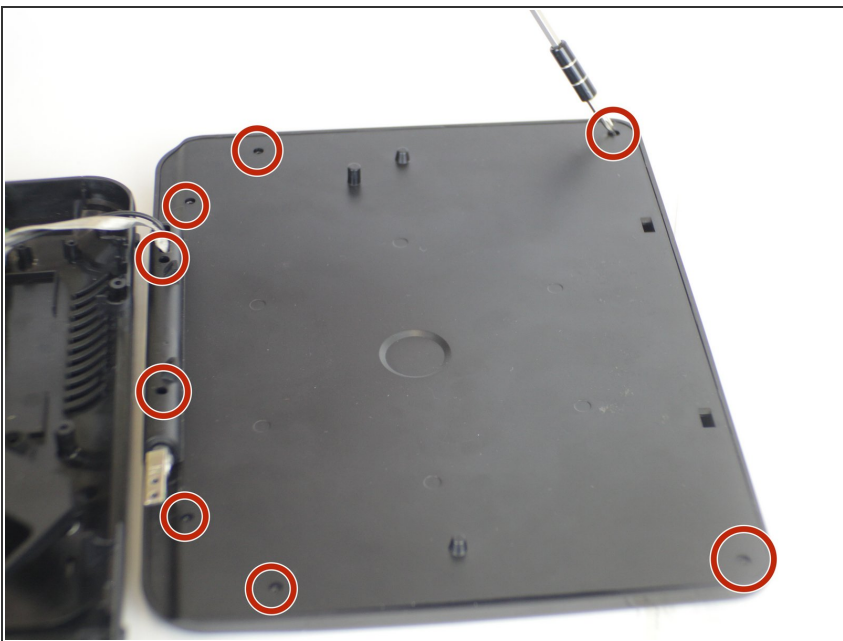
- After the back is removed and the disk tray is loose from the bottom, locate the two, 3 mm screws that hold the tray to the hinge.
- Unscrew them with the JIS #000 screwdriver.

Step 7



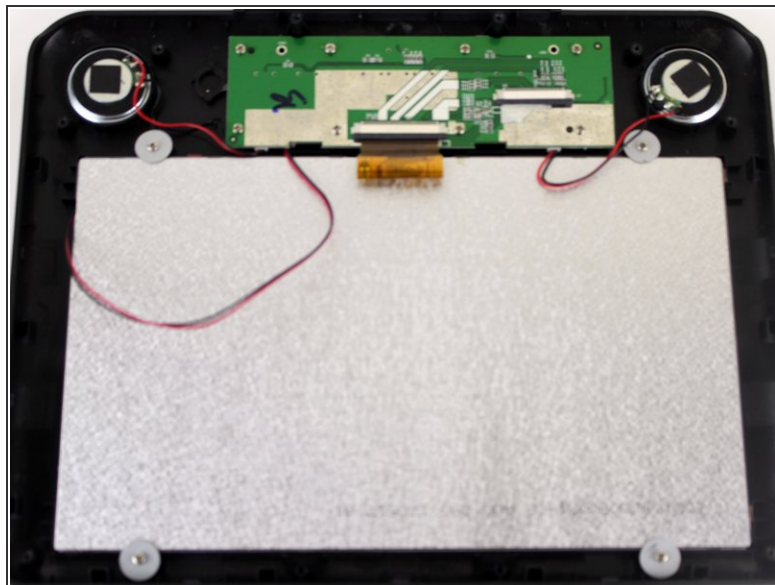
- Slide the tray up and off of the hinge completely.

Step 8 — Speakers



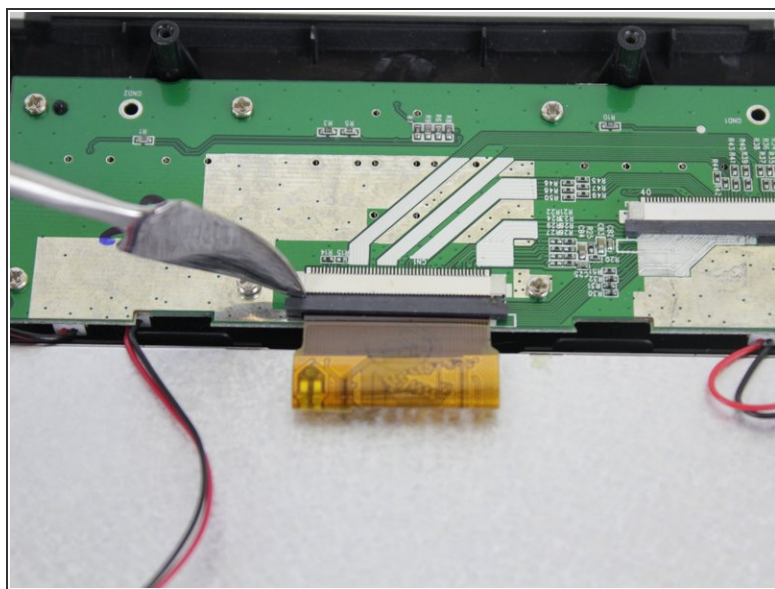
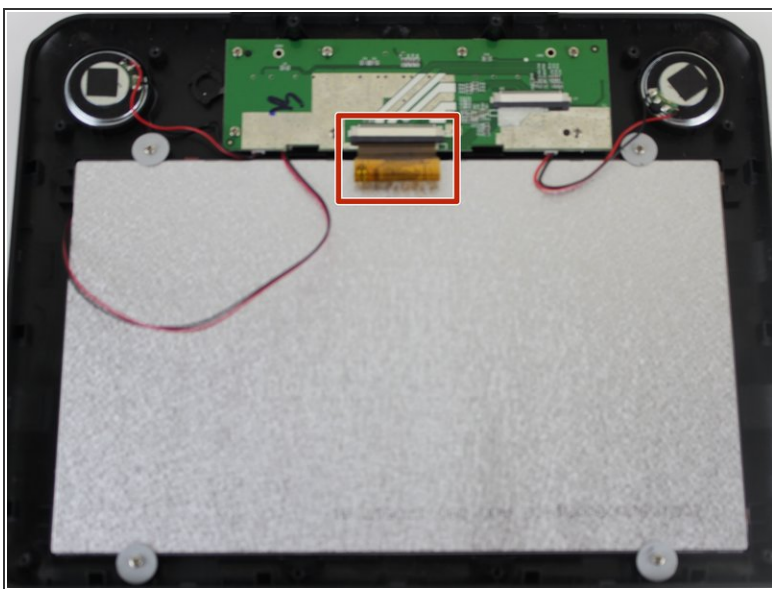
- After the bottom cover and disk tray have been removed, remove the back panel from the top half.
- There are six, 9mm screws on the bottom cover and 2 screws on the hinge. Remove them with the JIS #000 screwdriver.

Step 9



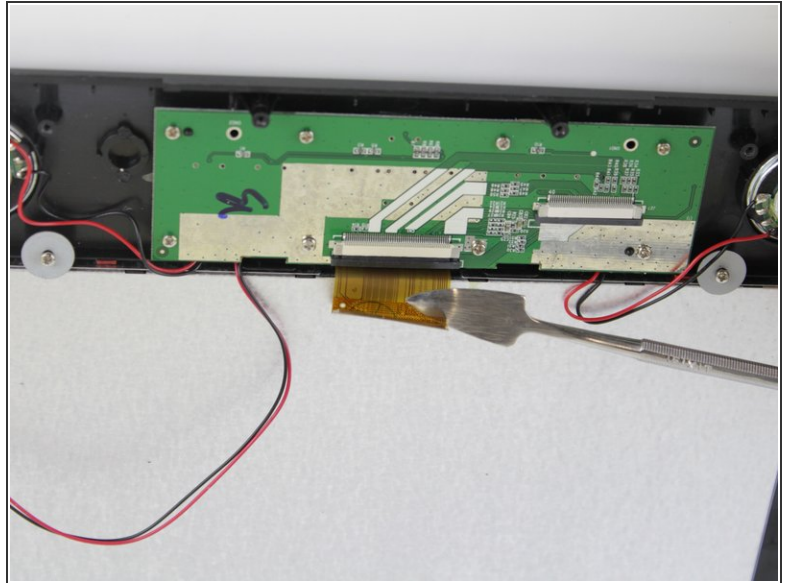
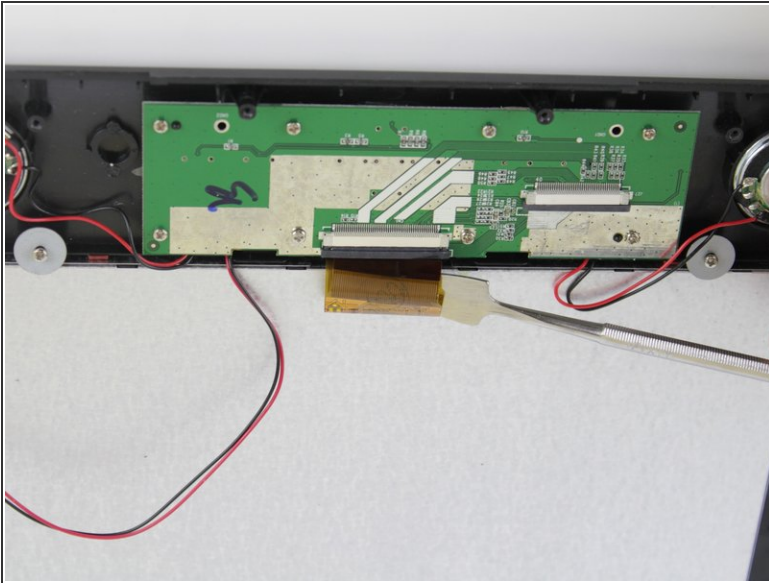
- Once all the screws are removed, pry off the cover with the pry tool.
- ⓘ You'll see the PC board, back of the speakers, and the back of the screen.

Step 10



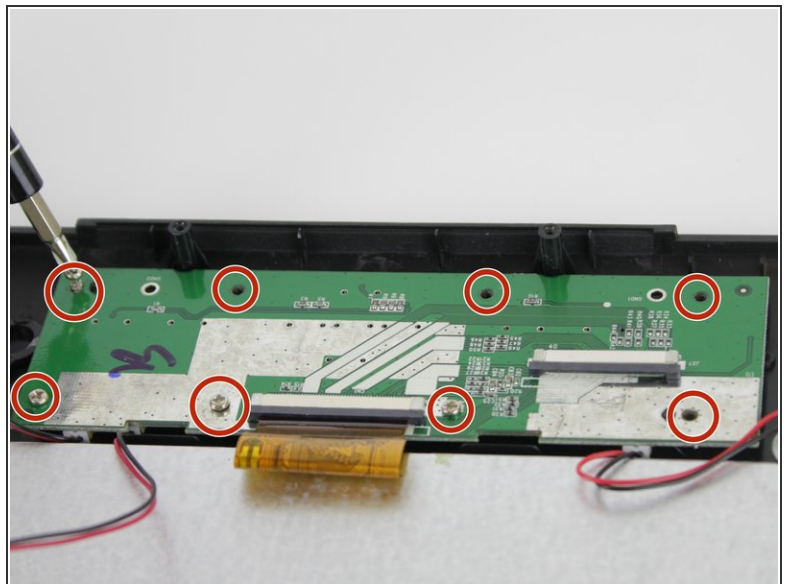
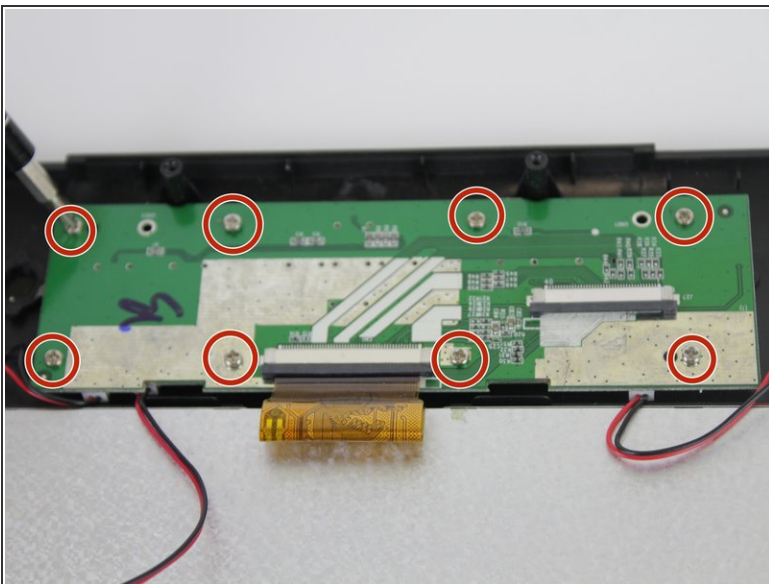
- Remove the ribbon cable carefully with the pry tool.
- First, push out the black portion.

Step 11



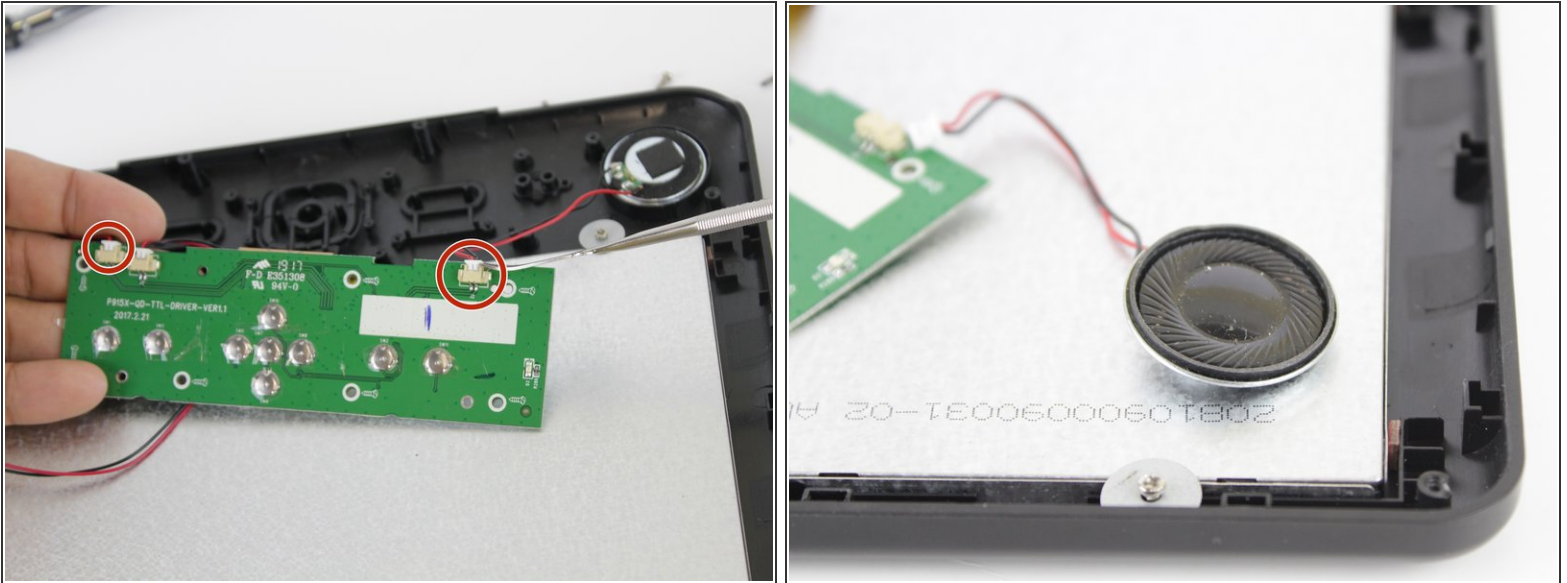
- Then, push out the 'ribbon' with the pry tool.

Step 12



- After the ribbon cable is removed, unscrew the eight, 9 mm screws from the PC board

Step 13



- Flip over the PC board. Remove the two sets of red and black wires which connect to the speakers.
- Use the pry tool at the white clip, to remove the wires. Then you can remove the speakers.
- ⓘ *The wire second to left connects to the screen. Remove the far left wire--circled in the first picture--to remove the left speaker.*

To reassemble your device, follow these instructions in reverse order.