



# Insignia NS-HDRAD Antenna Replacement

This guide provides steps to remove the antenna if it needs to be replaced.

Written By: MeredithDana



## INTRODUCTION

Because the antenna is an external component of the device, it can easily be broken and will need replacing. You must remove the rear panel first before replacing the antenna.



### TOOLS:

- [Phillips #1 Screwdriver](#) (1)
  - [Metal Spudger](#) (1)
  - [Small Needle Nose Pliers](#) (1)
-

## Step 1 — Battery



- Be sure the radio is turned off by pressing the red power button.
- Or, if using the charger, remove the power cord.

## Step 2



- Remove the panel on the back side of the radio by pressing the arrow in a downward motion.

### Step 3



- Remove the batteries one-by-one by pulling from the positive terminal of the top left battery.
- ⓘ The battery's positive terminal is indicated by a "+" on the side.
- Remove the adjacent battery by simply pulling it out of the holder.
- Repeat for the bottom row of batteries.

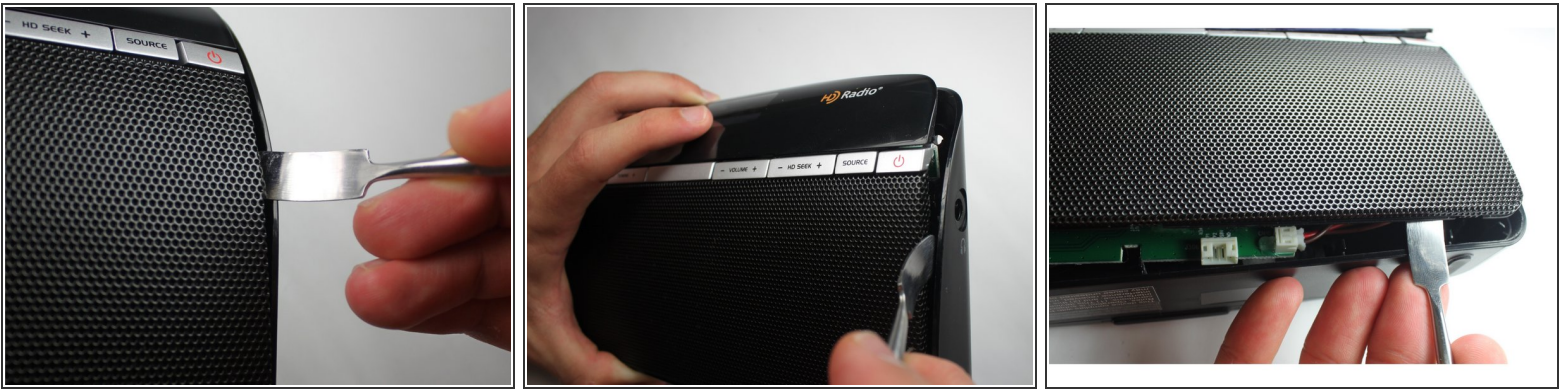
### Step 4 — Rear Panel



- Using the J1 Philip's head screwdriver, remove the 4 screws from the back side of the radio.
- ⓘ The 2 bottom screws are difficult to remove. Once unscrewed, either use a spudger to pull it out or knock on the front side of the radio to pop it out.

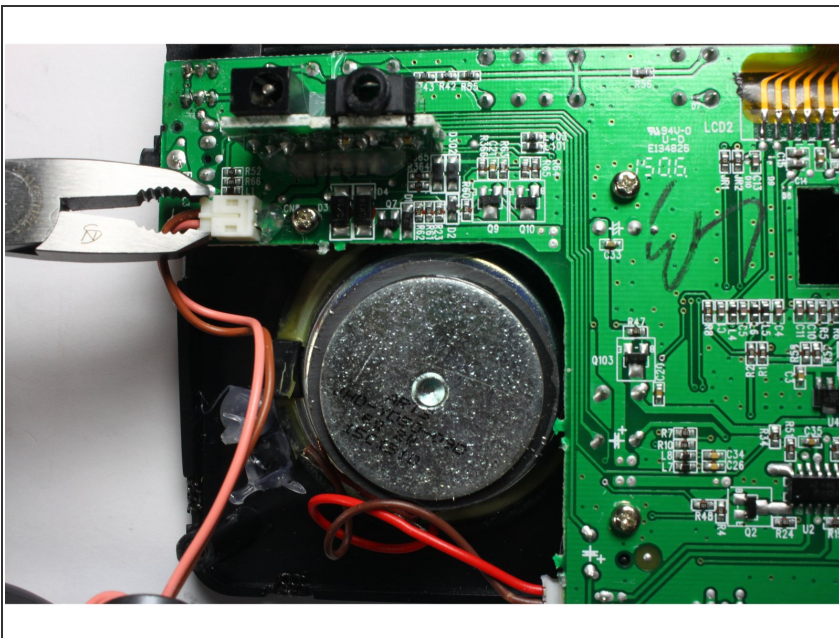


## Step 5



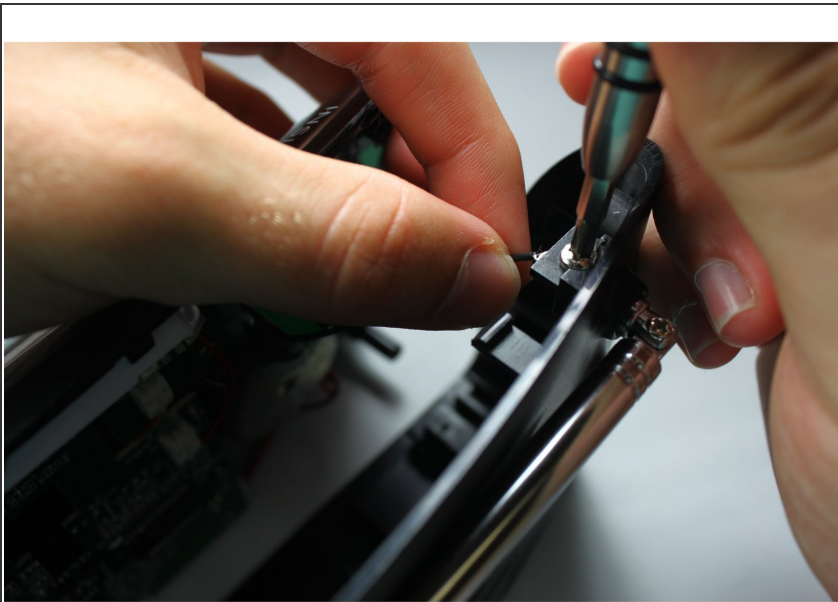
- Using the metal spudger, pry open the panel with the metal spudger. Work your way around the whole device.
- ⓘ The headphone jack is flush with the paneling so the panel must be moved away from the jack completely to remove.
- ☛ When reassembling, the ports don't fit into their respective holes in the back panel. Use the sharp metal end of the spudger and pull the ports to their slots.

## Step 6



- Using the pliers, separate the wire connector above the left speaker.
- ⓘ If this is the first time removing the wire connector, there may be glue holding the wires flush against the panel. Remove this glue with a finger or the plastic spudger.
- ⓘ Using regular pliers or needle nose pliers are fine for this task. They are interchangeable.

## Step 7



- Using the J1 Philip's head screwdriver, unscrew the bolt attaching the antenna to the back panel.

## Step 8 — Antenna



- Remove the antenna and the antenna wire terminal.
- ★ For reassembly, the wire terminal should fit between the fin with the screw hole and the antenna screw hole.

To reassemble your device, follow these instructions in reverse order.