



Insignia NS-HTMC01-B Power Button Replacement

Use this guide to replace the power button on the front of an Insignia NS-HTMC01-B ceramic heater.

Written By: Jack Casey



INTRODUCTION

This guide will help you replace a broken or damaged power button on the outside of the Insignia NS-HTMC01-B ceramic heater. A broken or damaged power button can prevent your heater from shutting off, or turning on.



TOOLS:

- [Phillips #1 Screwdriver](#) (1)
-

Step 1 — Power Button



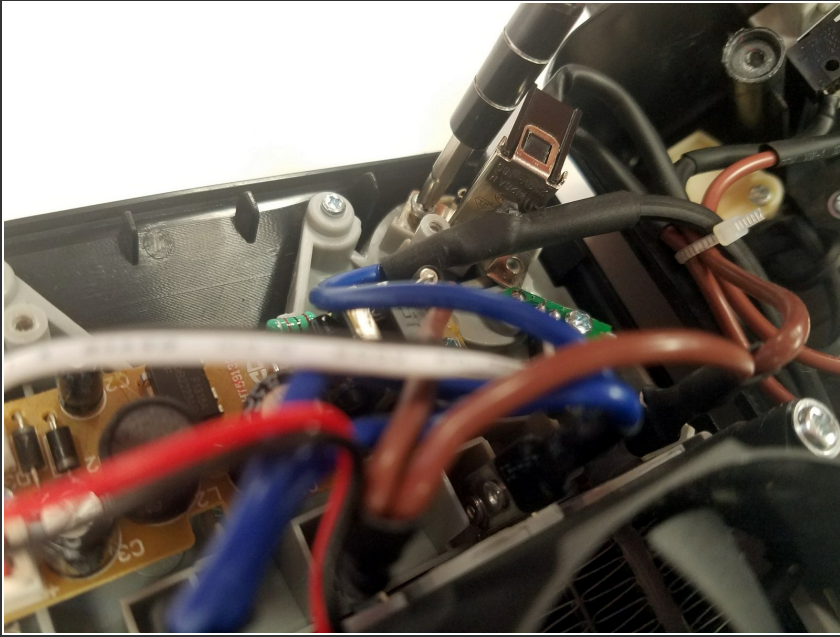
- Flip your device over so the bottom panel faces you. You should see a hole containing a screw in each corner of the device.
- Insert a 4-inch Phillips #1 screwdriver into each hole until connected with the 20 millimeter, sharp-point screw.

Step 2



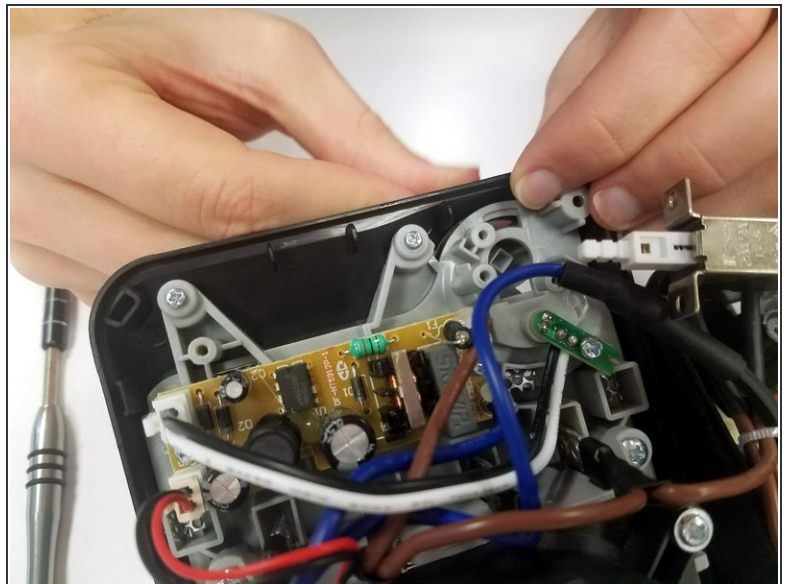
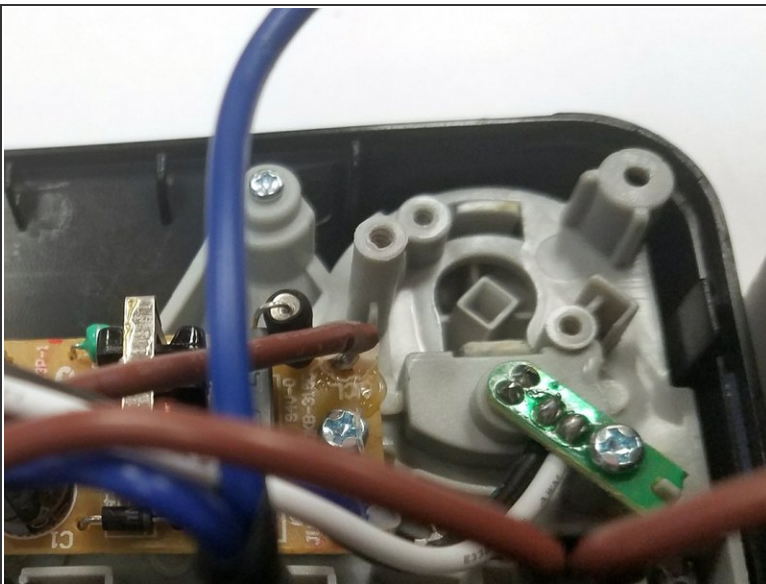
- Find the power switch, located inside the heater on the bottom left corner.

Step 3



- Using a Phillips #1 screwdriver, unscrew the two 7 millimeter screws attaching the power switch to the power button.

Step 4



- Find the clips holding the power button in place.
- Press down on the clips to remove the button.

To reassemble your device, follow these instructions in reverse order.