



# Insignia NS-HTMC01-B Power Cord Replacement

Replace the power cord if it is damaged or frayed in order to safely use the heater.

Written By: Rebecca Nunez



## INTRODUCTION

This guide will take you through the process of replacing the power cord of the Insignia NS-HTMC01-B.



### TOOLS:

- [Phillips #2 Screwdriver](#) (1)
  - [Phillips #00 Screwdriver](#) (1)
-

## Step 1 — Front Case



- Flip the device over so the back panel faces up.
- Unscrew the four screws counter-clockwise from the back panel using a 4mm Phillips screwdriver.
  - ⓘ You may want to use a flashlight during this step, as the screws are hard to see.
- ⚠ Make sure to firmly connect your screwdriver with the head of the screw. A loose connection can strip the screw head, making the screws nearly impossible to remove.

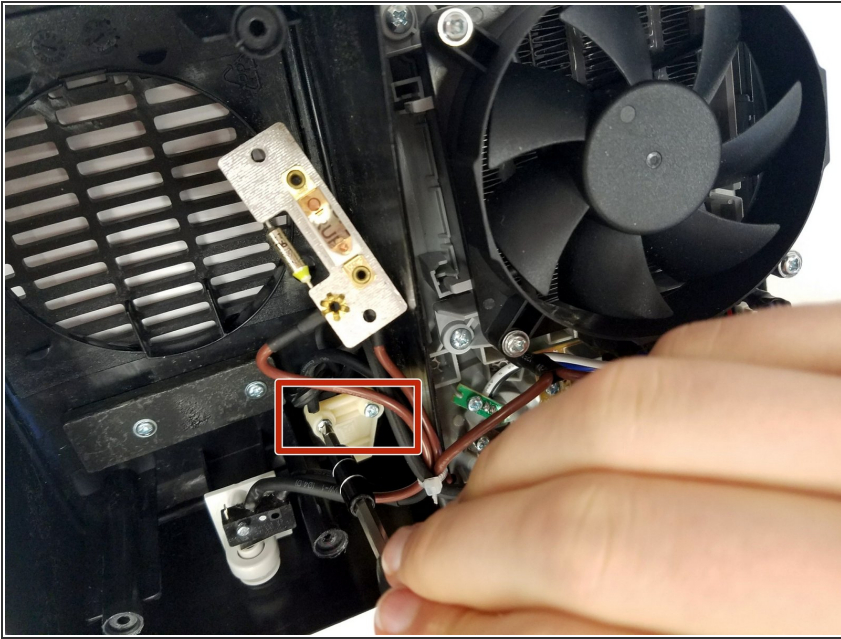
## Step 2



- Take the screws out and set them aside.
  - ⓘ Be sure to set them somewhere flat, so they don't roll away.
- Gently pull the front panel and back panel apart to open the device.

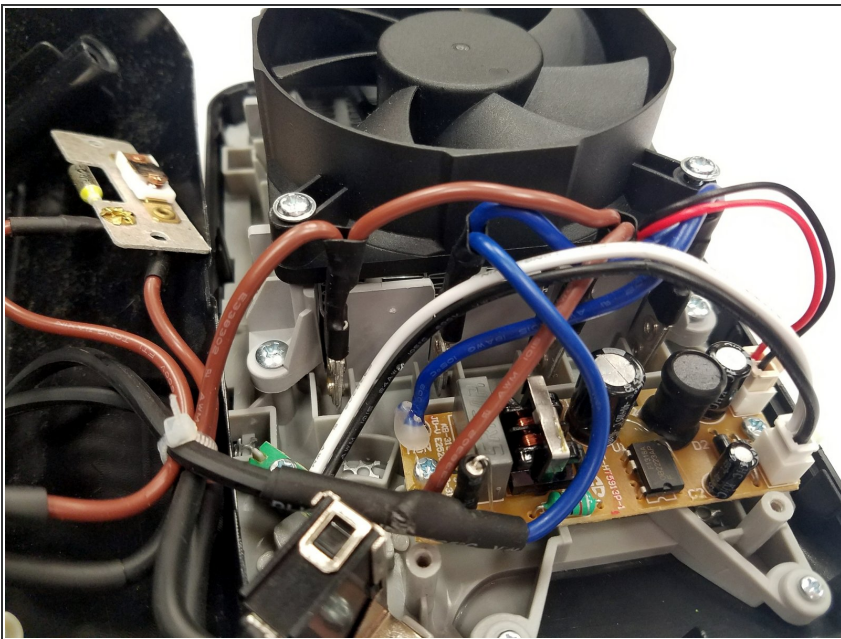


## Step 3 — Power Cord



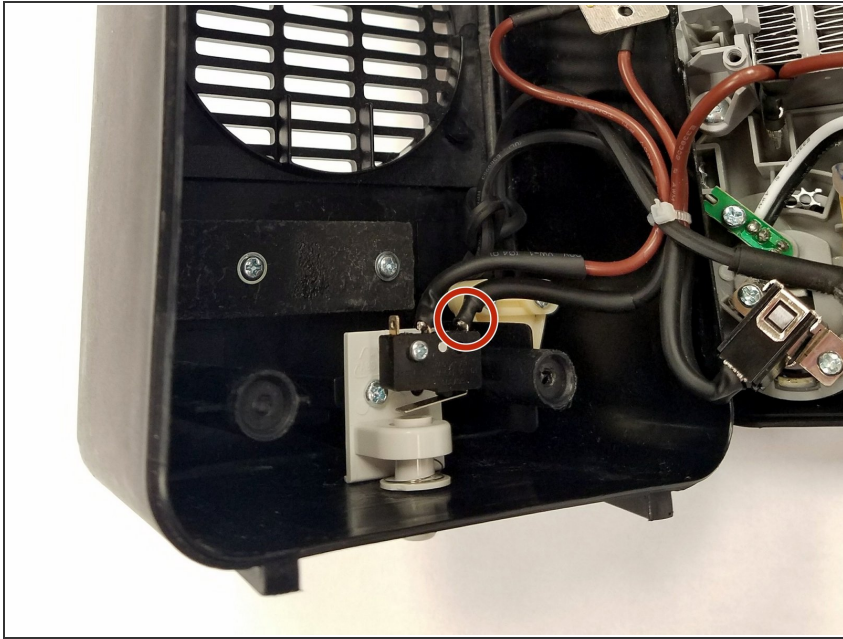
- Use a Phillips #2 screwdriver to remove the two 1.7mm screws from the white triangular piece covering the power cord.

## Step 4



- Disconnect all of the blue wires. There should be 3 separate blue-wire connections.

## Step 5



- Disconnect the second black wire from the rectangular piece above the Tip-Over Safety Switch.
- Remove power cord.

To reassemble your device, follow these instructions in reverse order.