



Insignia NS-HTMC01-B Power Indicator Light Replacement

Replace the power indicator light of your Insignia NS-HTMC01-B heater.

Written By: Emma Walters



INTRODUCTION

Replace the power indicator light of your Insignia NS-HTMC01-B heater.



TOOLS:

- [Phillips #00 Screwdriver](#) (1)
-

Step 1 — Front Case



- Flip the device over so the back panel faces up.
- Unscrew the four screws counter-clockwise from the back panel using a 4mm Phillips screwdriver.
 - ⓘ You may want to use a flashlight during this step, as the screws are hard to see.
- ⚠ Make sure to firmly connect your screwdriver with the head of the screw. A loose connection can strip the screw head, making the screws nearly impossible to remove.

Step 2




- Take the screws out and set them aside.
 - ⓘ Be sure to set them somewhere flat, so they don't roll away.
- Gently pull the front panel and back panel apart to open the device.

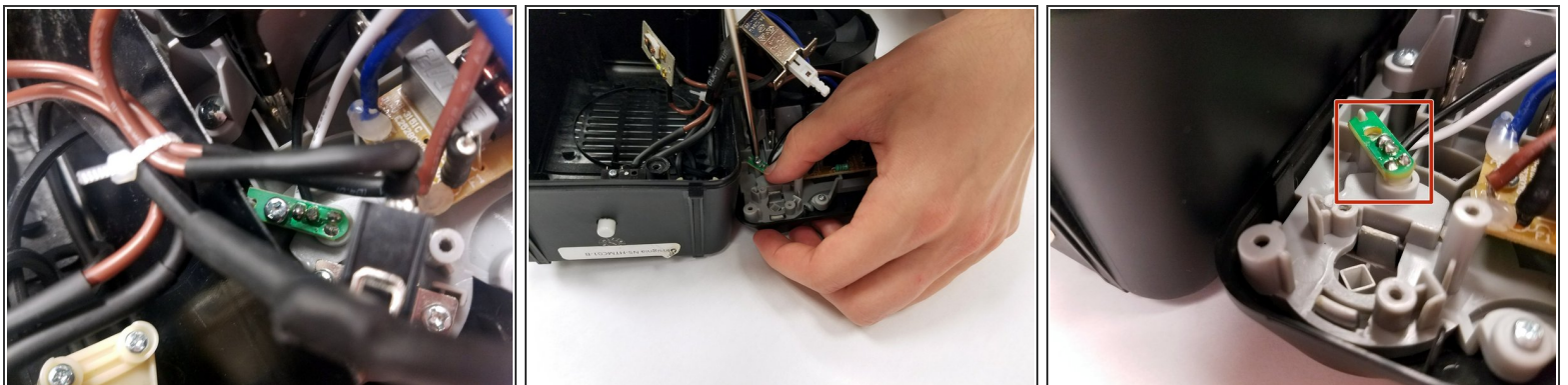
Step 3 — Power Indicator Light



- Locate the bottom left corner below the fan inside of the heater.
- There is a small black rectangular box with two cables coming out of it.
- Using a Phillips #4 screwdriver, unscrew the two screws at the base counterclockwise, and set the screws to the side.

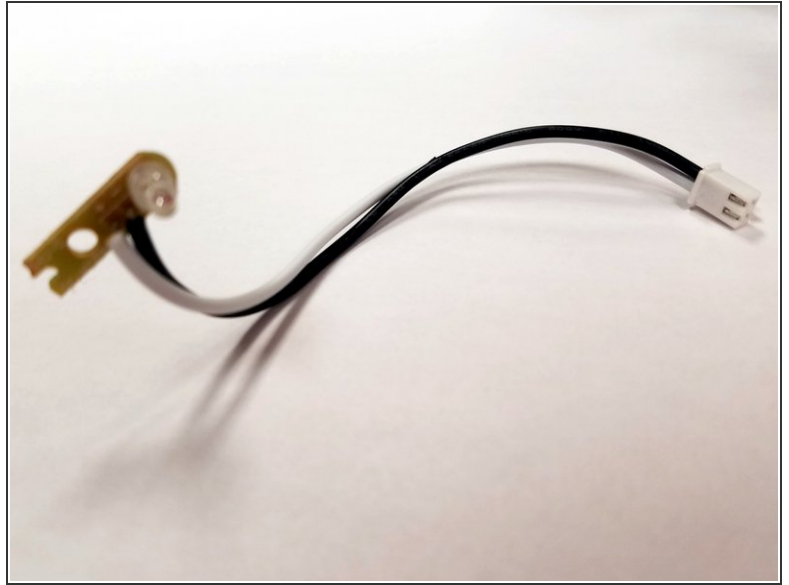
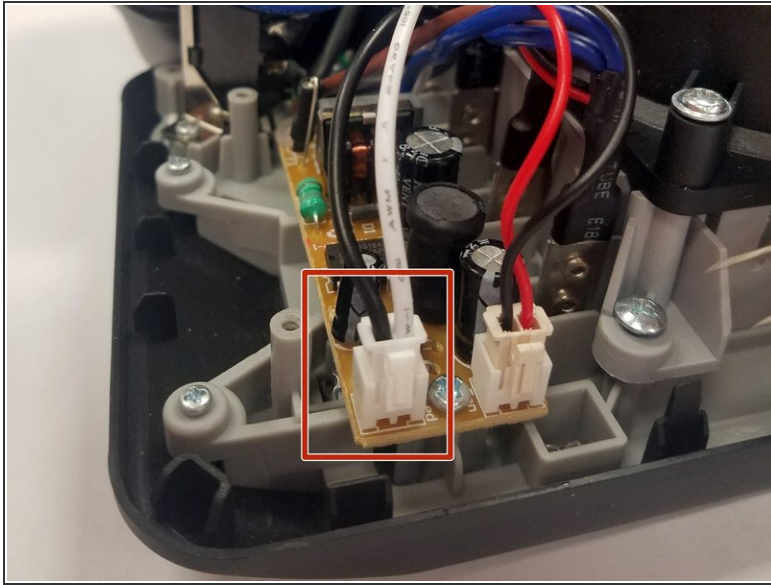
 Be sure to set the screws on a flat surface to ensure they don't roll away.

Step 4



- After unscrewing the black rectangular box up from the base of the grey frame, locate the small green rectangular light fixture.
- Unscrew the one screw from the green rectangle counter clockwise, and set the screw to the side.
- Gently lift the green circuit board out of the socket by pulling on the black and white cables.
- ❗ At the end of the green rectangle is a light-emitting diode (LED). This is what lights up the power button.

Step 5



- To replace the LED, unplug the white jack with the black and white cords from the bigger tan circuit board.
- Remove the LED cord.

To reassemble your device, follow these instructions in reverse order.