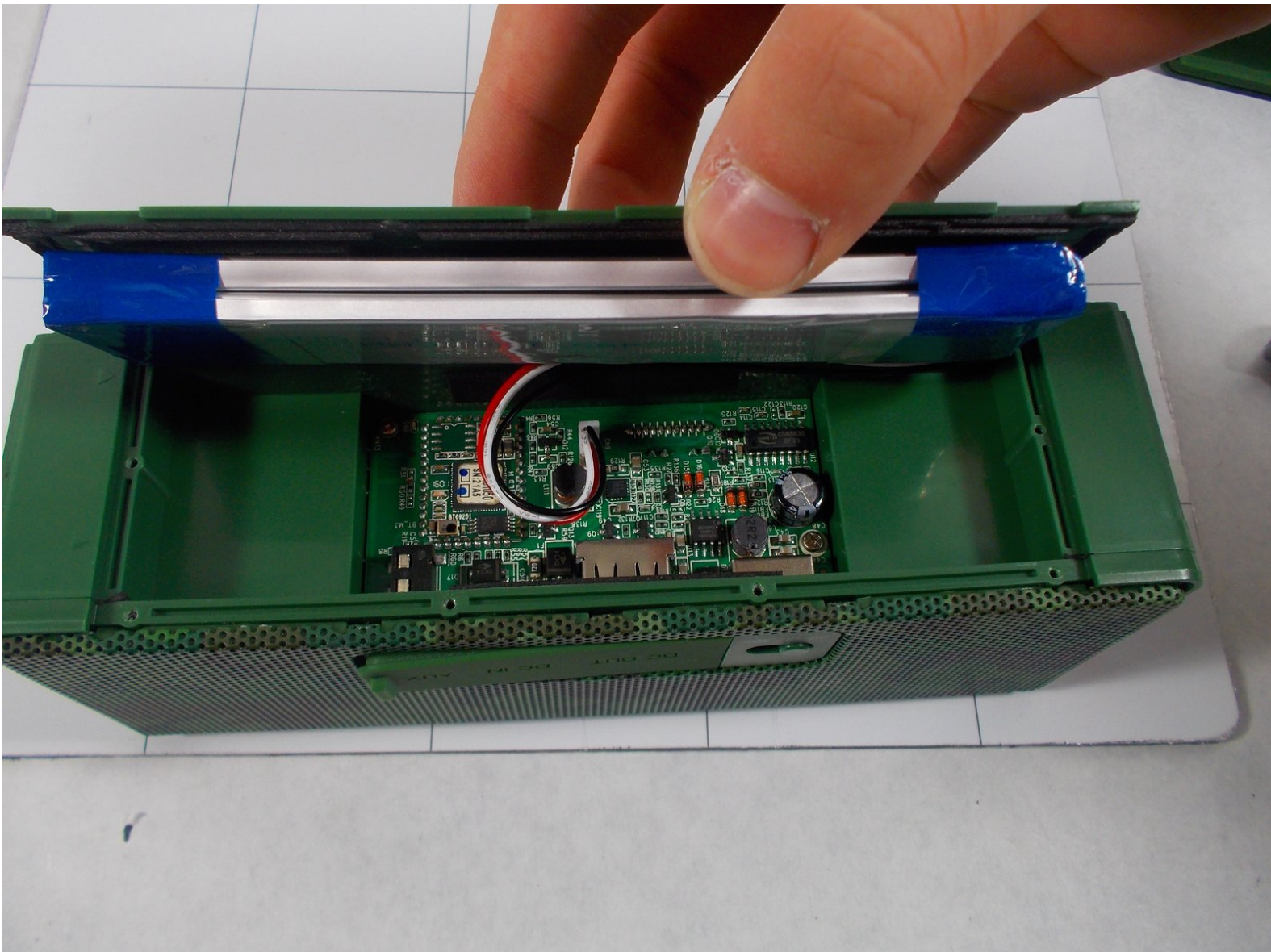




Insignia NS-SPBTBRICK-CM Back Cover and Battery Replacement

Read this guide to learn how to replace the back cover and battery in the Insignia Bluetooth Speaker.

Written By: Erin Steele



INTRODUCTION

Make sure the device is powered off before you start following the instructions. If you have a physical disability with your hand, wrist, or arm consider having a different individual help you because the tasks require steady hands. Be sure to work on a flat surface and to not lose any of the small parts because they are very small and can be lost easily.



TOOLS:

- [Phillips #000 Screwdriver](#) (1)
- [iFixit Opening Tools](#) (1)
- [Magnetic Project Mat](#) (1)



PARTS:

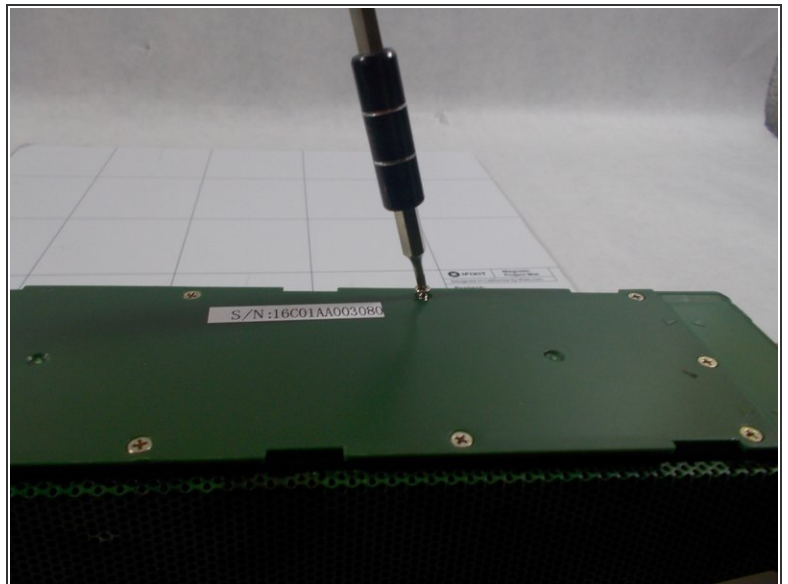
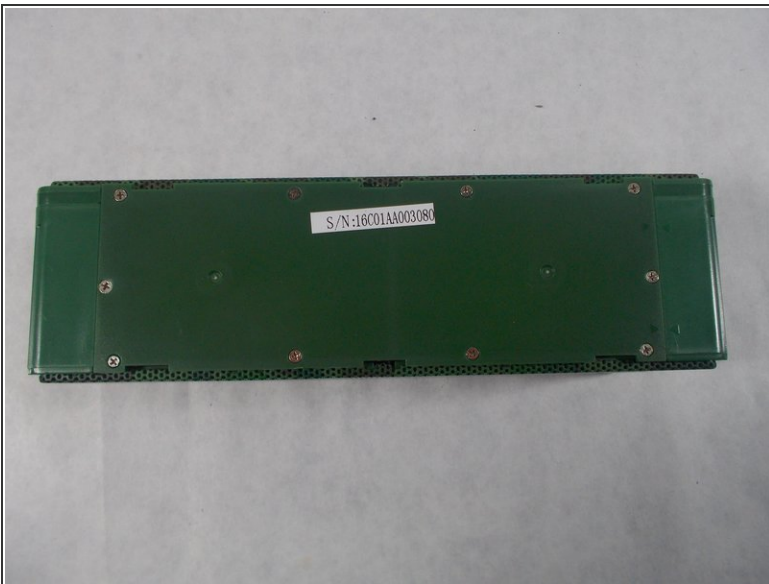
- [Battery Power C2O16 0.219 ZH](#) (1)

Step 1 — Battery



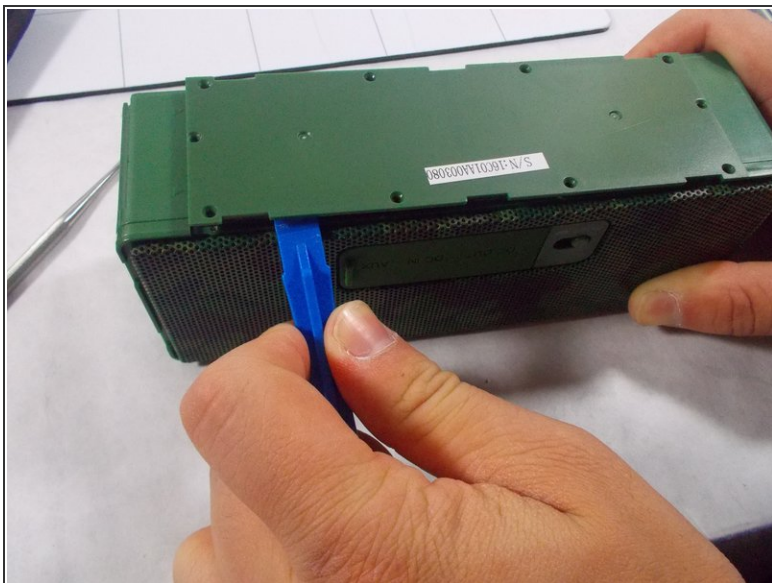
- Remove the rubber sleeve.

Step 2



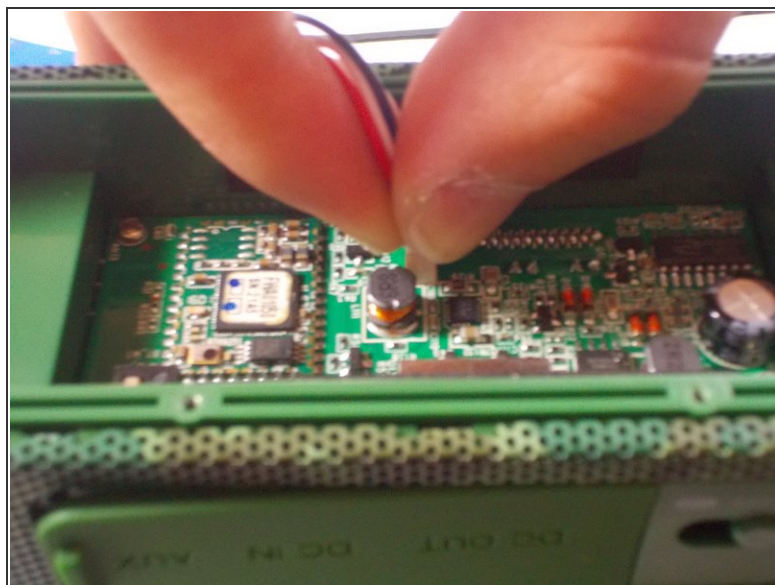
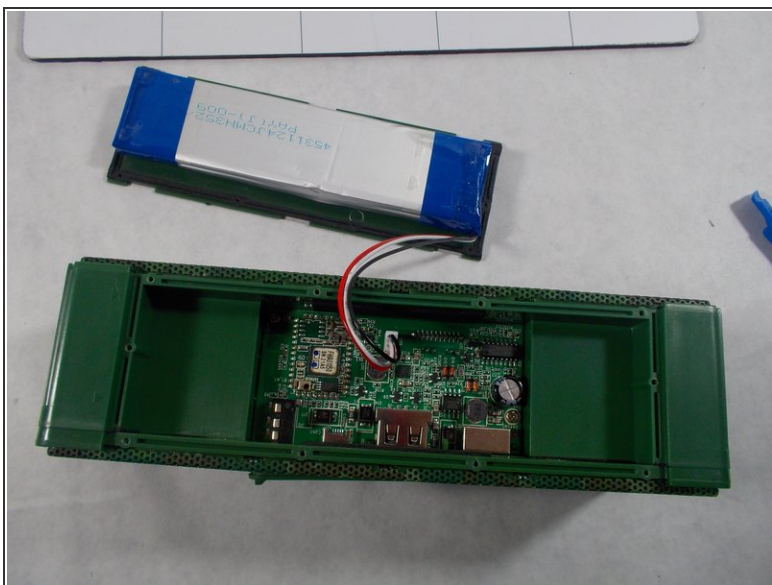
- Use the specified screwdriver to unscrew the ten screws on the back cover.

Step 3



- Remove the back cover. Be careful to not lose any of the screws because they are extremely small and can be easily lost.

Step 4



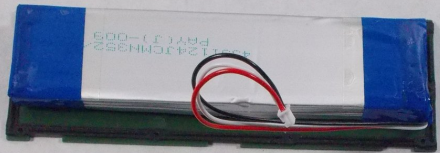
- The battery will be attached to the back cover with sticky tape. Unplug the wires connecting the battery to the speaker.

Step 5

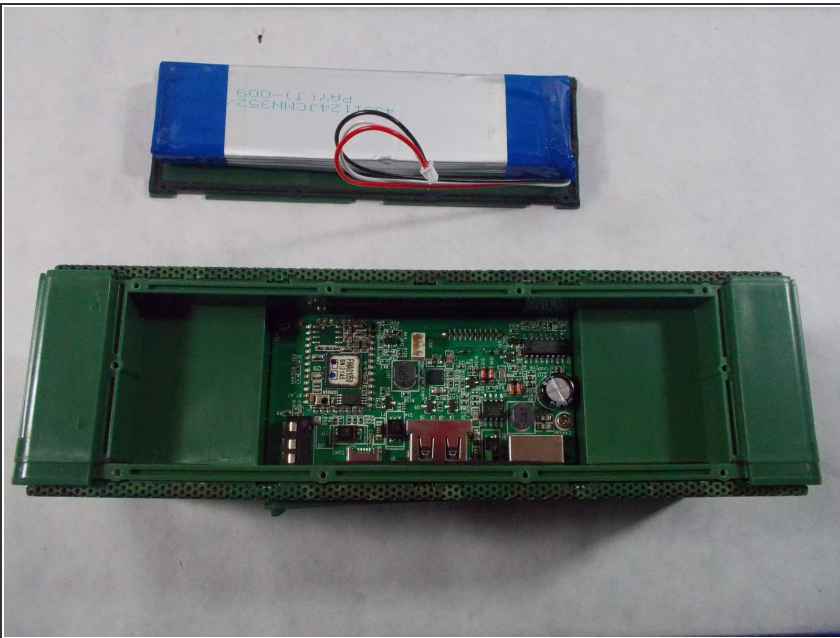


- Using one of the four blue opening tools, pry the battery off of the back cover.

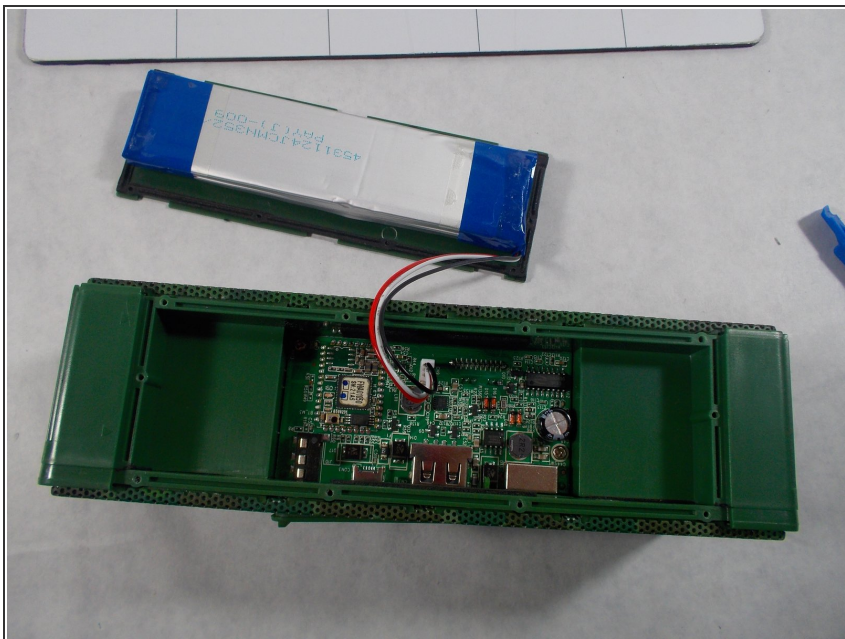
Step 6



- Stick the new battery to the back cover using sticky tape.

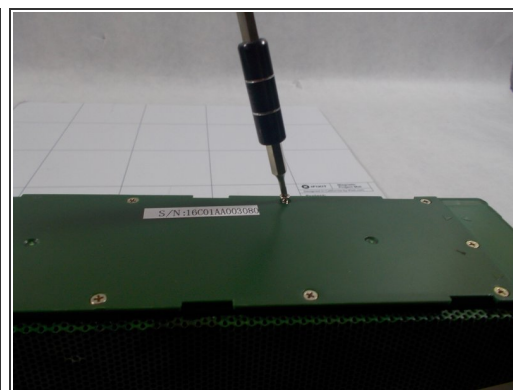
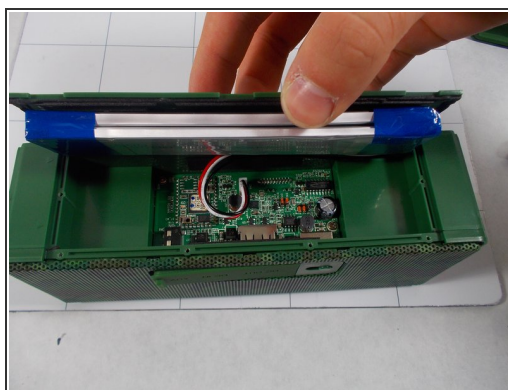
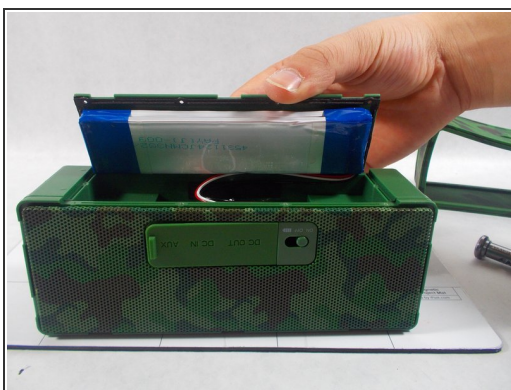


Step 7



- Connect the wire from the new battery to the bluetooth speaker.

Step 8



- Place cover back on and using the iFixit screwdriver PH000, screw the ten screws back onto the back cover.

To reassemble your device, follow these instructions in reverse order.