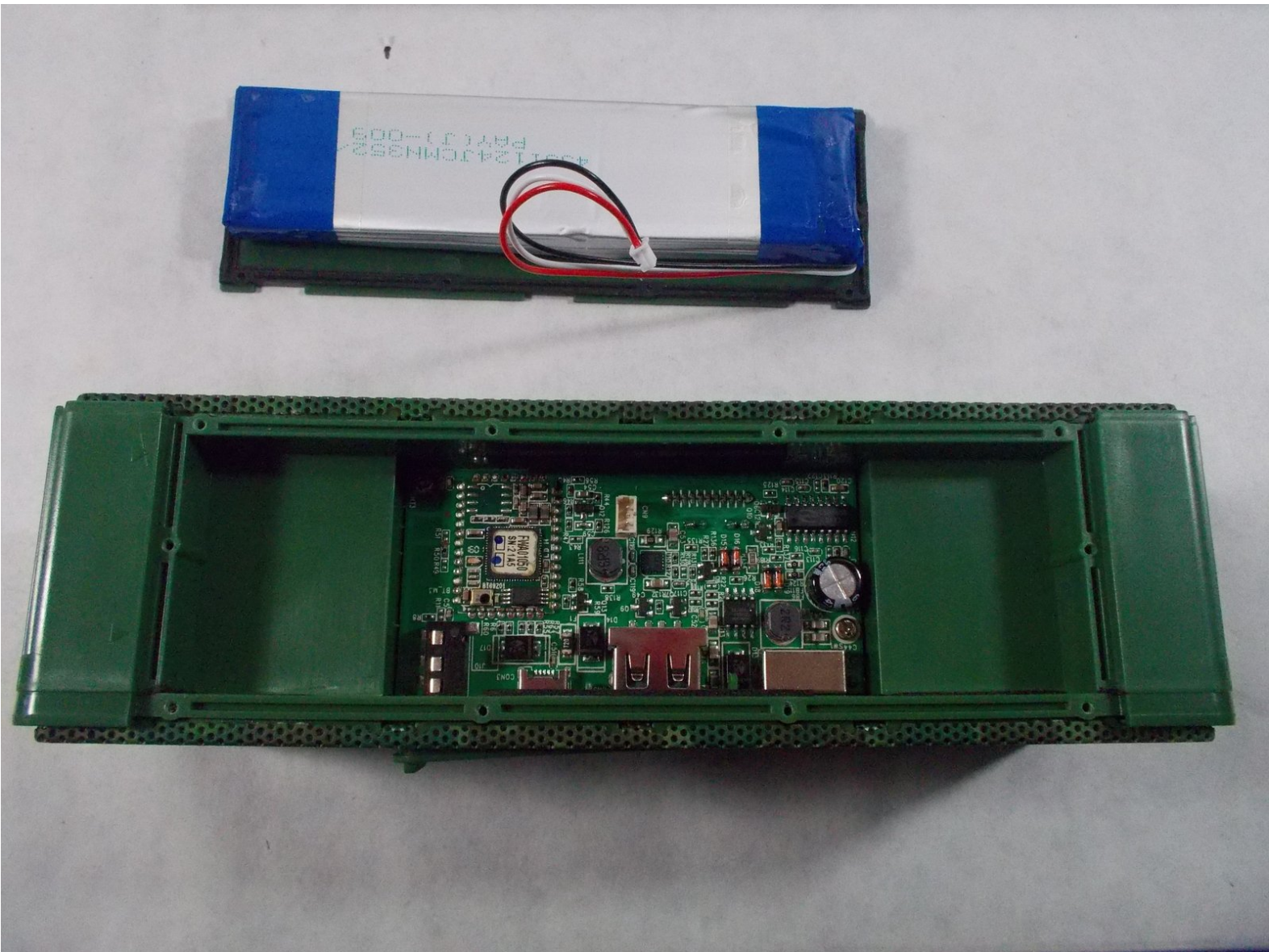




Insignia NS-SPBTBRICK-CM Battery Replacement Prerequisite

This guide on how to replace the back cover and battery serve as a prerequisite for several other replacement guides.

Written By: Erin Steele



INTRODUCTION

Make sure the device is powered off before you start following the instructions. If you have a physical disability with your hand, wrist, or arm consider having a different individual help you because the tasks require steady hands. Be sure to work on a flat surface and to not lose any of the small parts because they are very small and can be lost easily.



TOOLS:

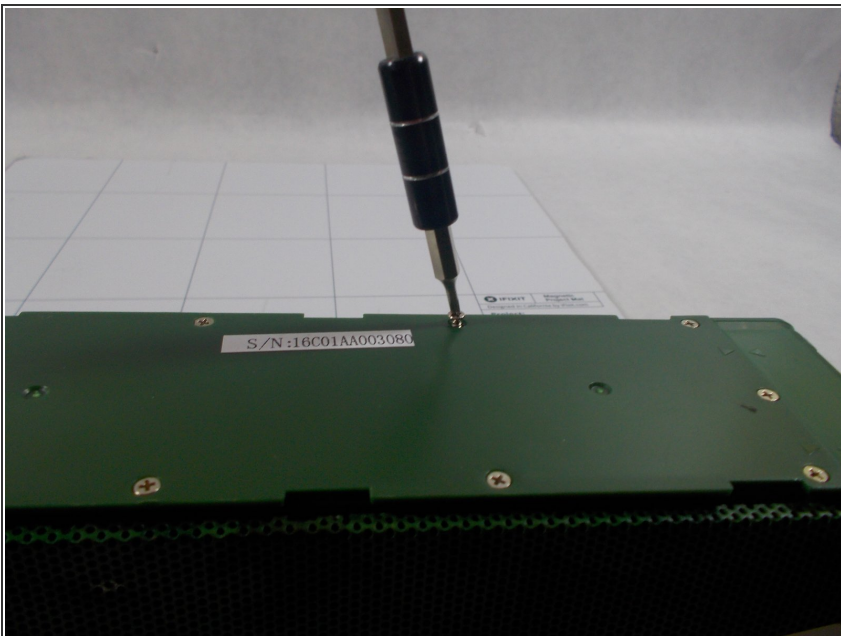
- [Phillips #000 Screwdriver](#) (1)
- [Magnetic Project Mat](#) (1)
- [iFixit Opening Tools](#) (1)

Step 1 — Battery



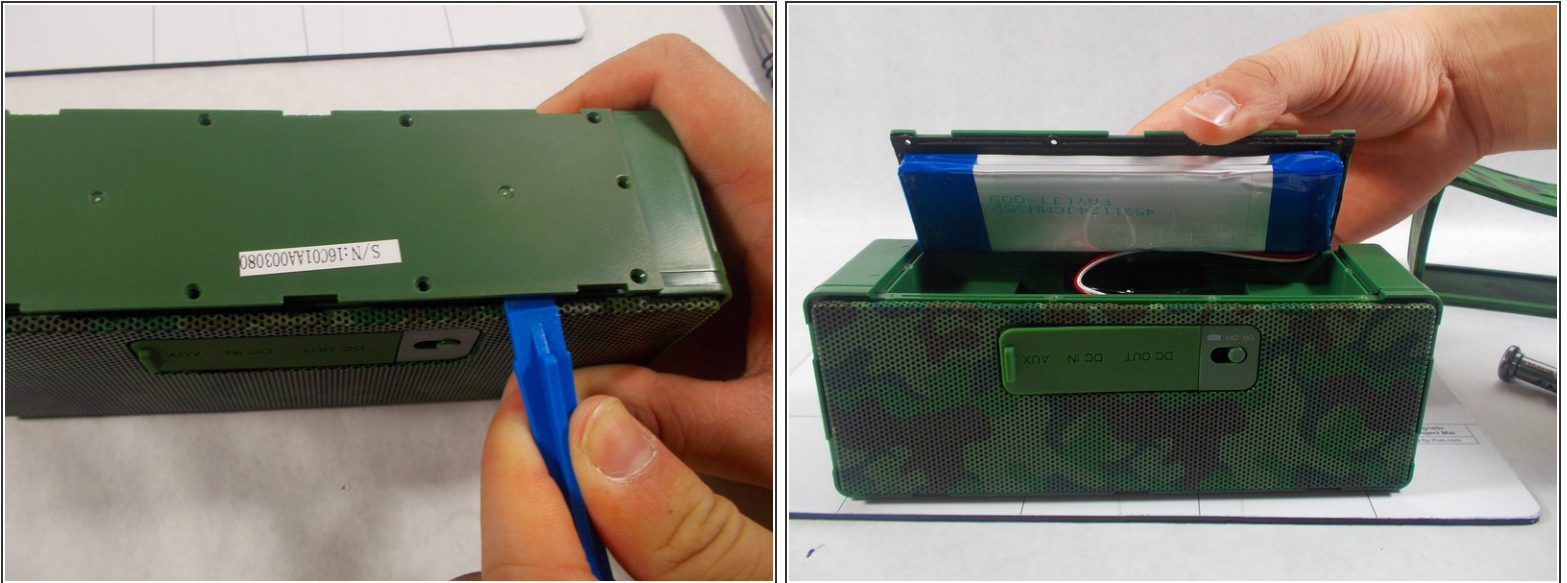
- Remove the rubber sleeve.

Step 2



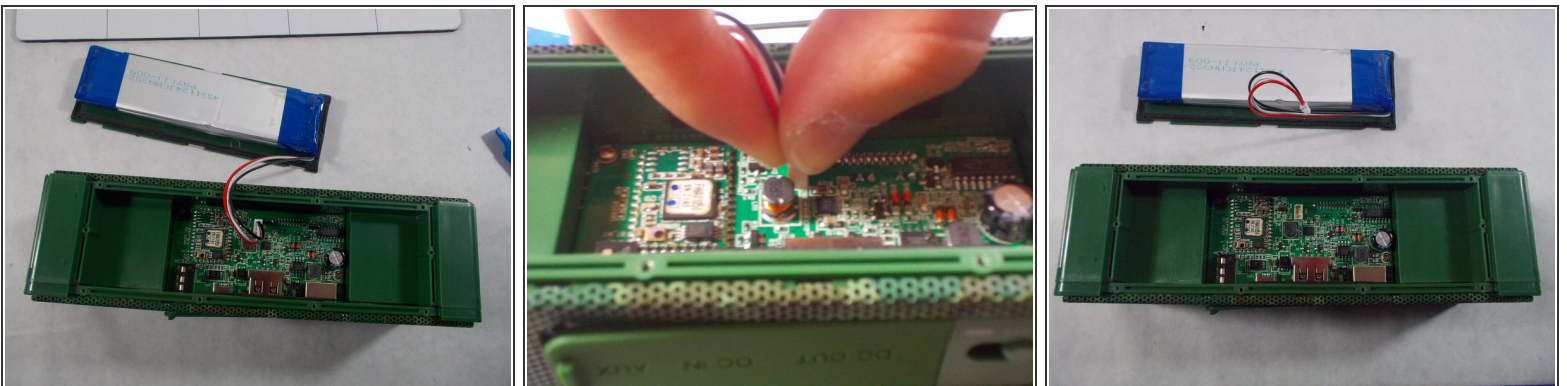
- Use the specified screwdriver to unscrew the ten screws on the back cover.

Step 3



- Remove the back cover. Be careful to not lose any of the screws because they are extremely small and can be easily lost.

Step 4



- The battery will be attached to the back cover with sticky tape. Unplug the wires connecting the battery to the speaker.

To reassemble your device, follow these instructions in reverse order.