



Insignia NS-SPBTBRICK-CM Bluetooth Button Replacement

Read this guide for easy instructions on how to replace the bluetooth button.

Written By: Erin Steele



INTRODUCTION

This guide gives an in depth explanation of replacing the bluetooth button in the Insignia Bluetooth Speaker. If you have any physical disability in your hand, wrist, or arm please consider having a different individual because these tasks require steady hands.



TOOLS:

- [Phillips #000 Screwdriver](#) (1)
- [Magnetic Project Mat](#) (1)
- [Special srews, spudger, and a sauter.](#) (1)



PARTS:

- [Bluetooth Button](#) (1)

Step 1 — Bluetooth Button



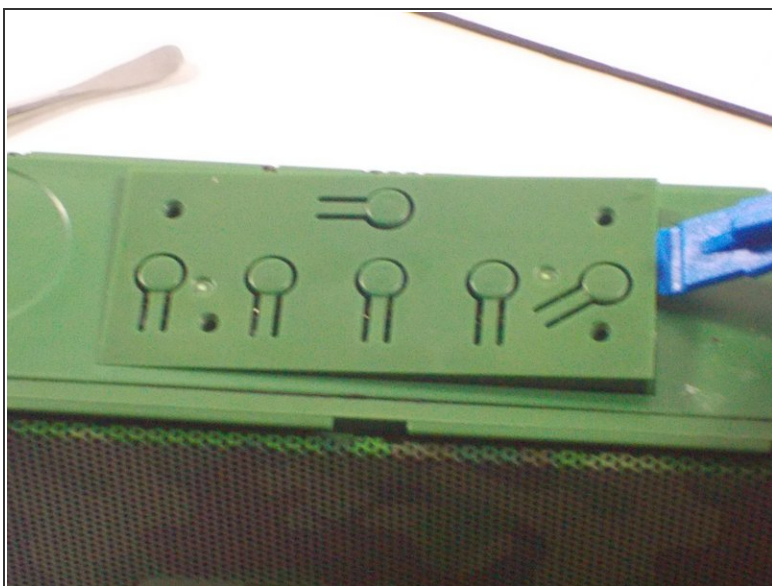
- Remove the rubber sleeve.

Step 2



- Remove 4 screws from the green, plastic button cover.

Step 3



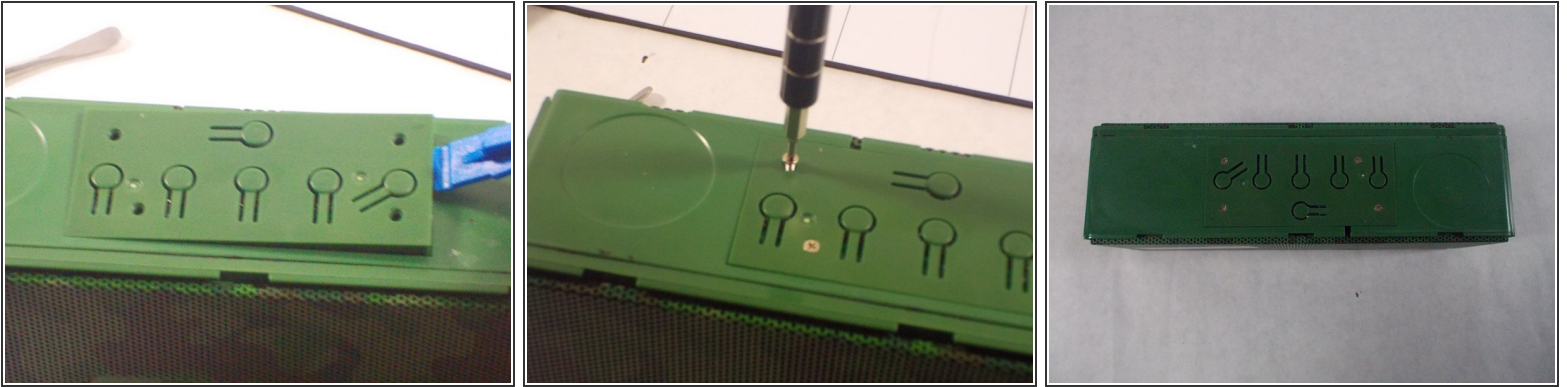
- After successfully removing the plastic cover, use a sauter against the bluetooth button. The heat will make the removal of the button easy.

Step 4



- Place the new bluetooth button in the place of the old bluetooth button and mend the button into place using heat.

Step 5



- Screw the 4 screws of the plastic button cover back onto the device.

Step 6



- Put the plastic sleeve back onto the speaker.

To reassemble your device, follow these instructions in reverse order.