



Insignia NS-SPBTBRICK-CM USB Port Replacement

Use this guide to learn how to replace the USB port in the Insignia Speaker.

Written By: Erin Steele



INTRODUCTION

Make sure the device is powered off before you start following the instructions. If you have a physical disability with your hand, wrist, or arm consider having a different individual help you because the tasks require steady hands. Be sure to work on a flat surface and to not lose any of the small parts because they are very small and can be lost easily.



TOOLS:

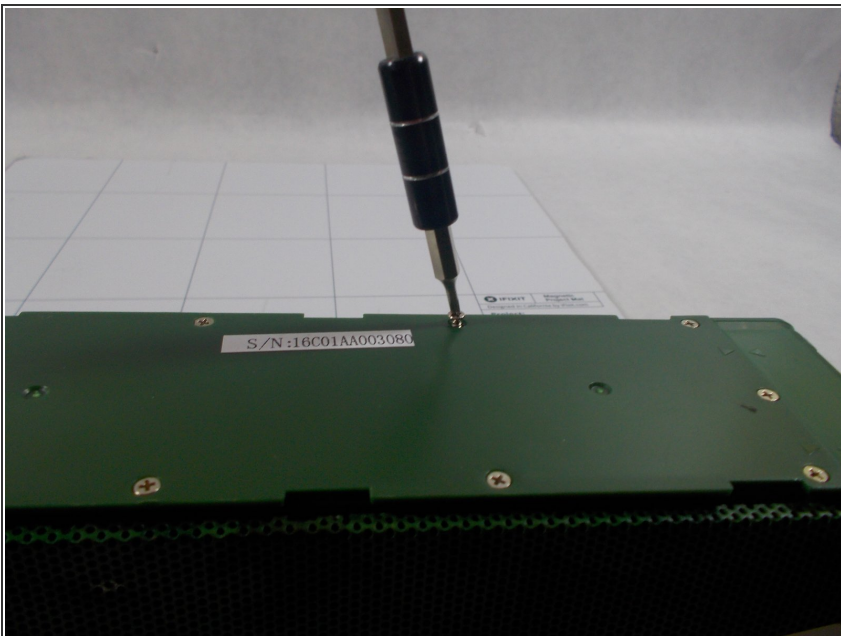
- [Phillips #000 Screwdriver](#) (1)
 - [Magnetic Project Mat](#) (1)
 - [iFixit Opening Tools](#) (1)
 - [Tweezers](#) (1)
-

Step 1 — Battery



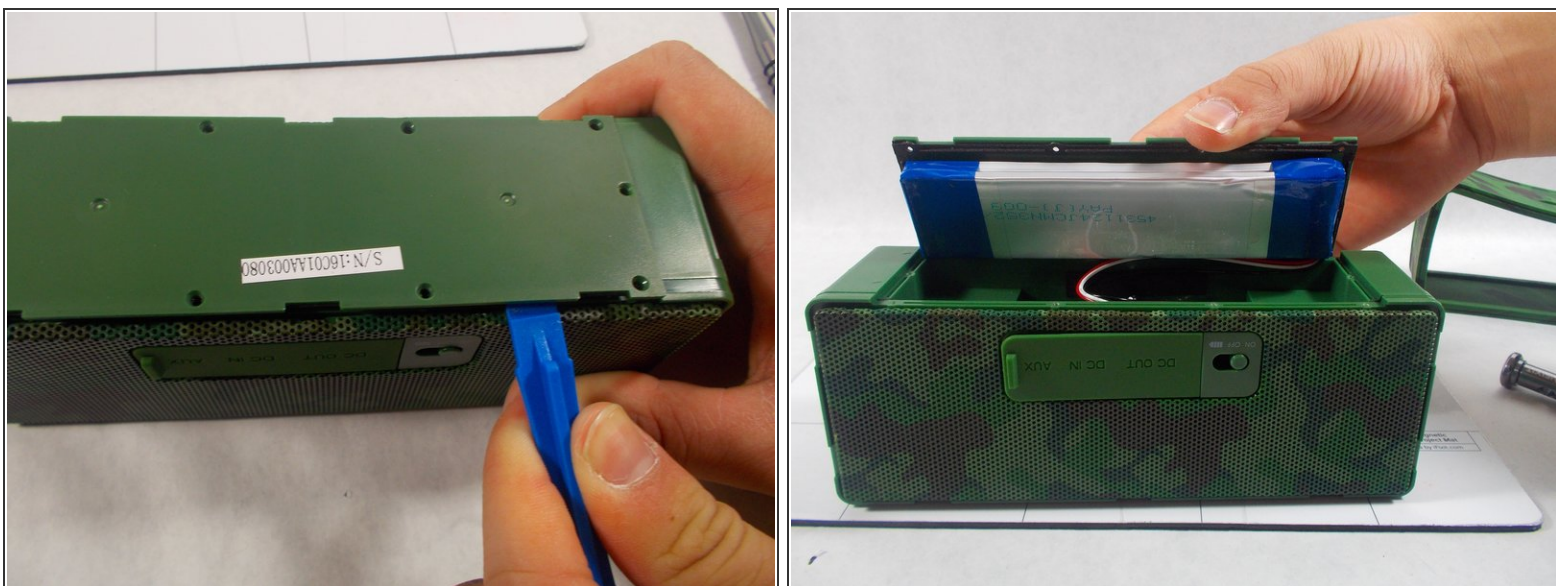
- Remove the rubber sleeve.

Step 2



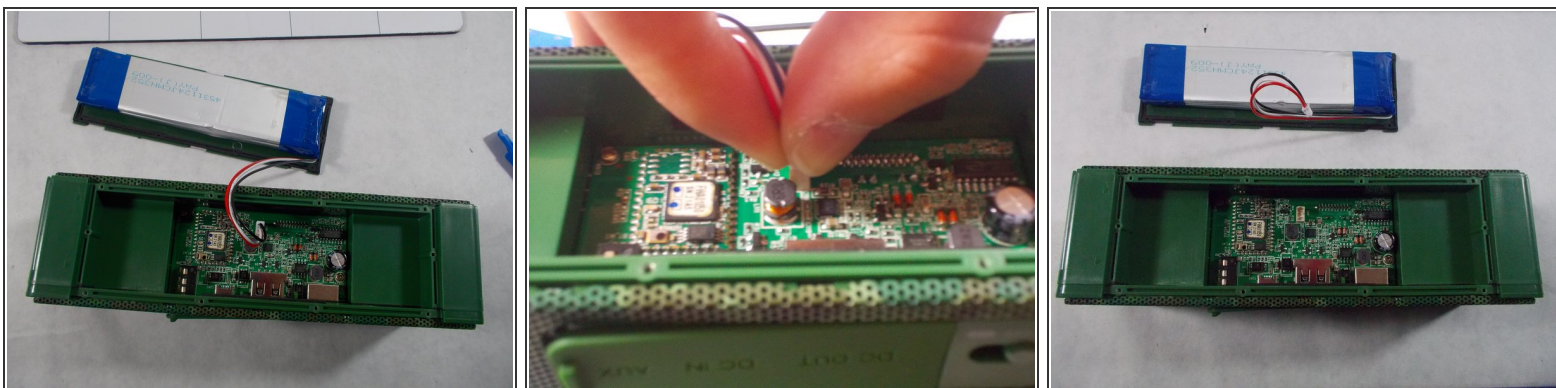
- Use the specified screwdriver to unscrew the ten screws on the back cover.

Step 3



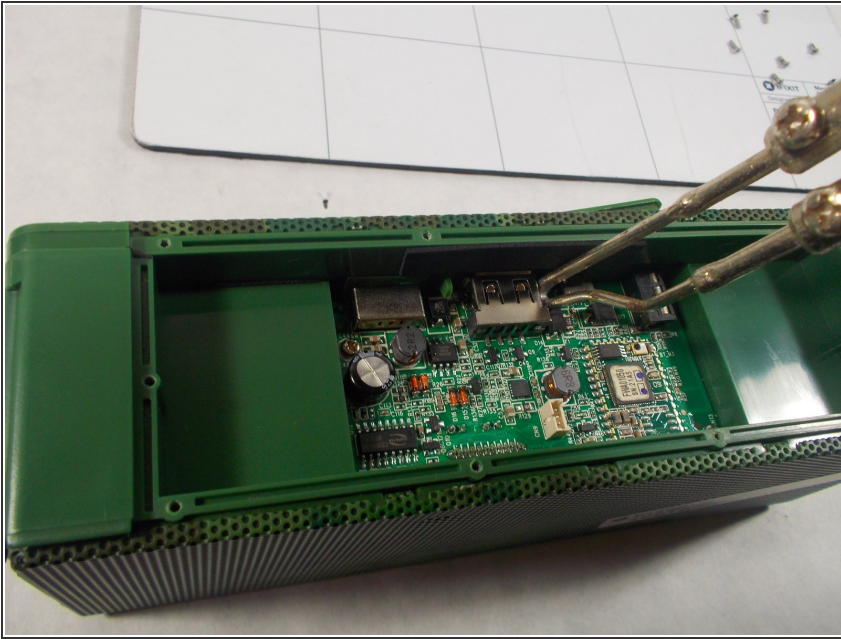
- Remove the back cover. Be careful to not lose any of the screws because they are extremely small and can be easily lost.

Step 4



- The battery will be attached to the back cover with sticky tape. Unplug the wires connecting the battery to the speaker.

Step 5 — USB Port



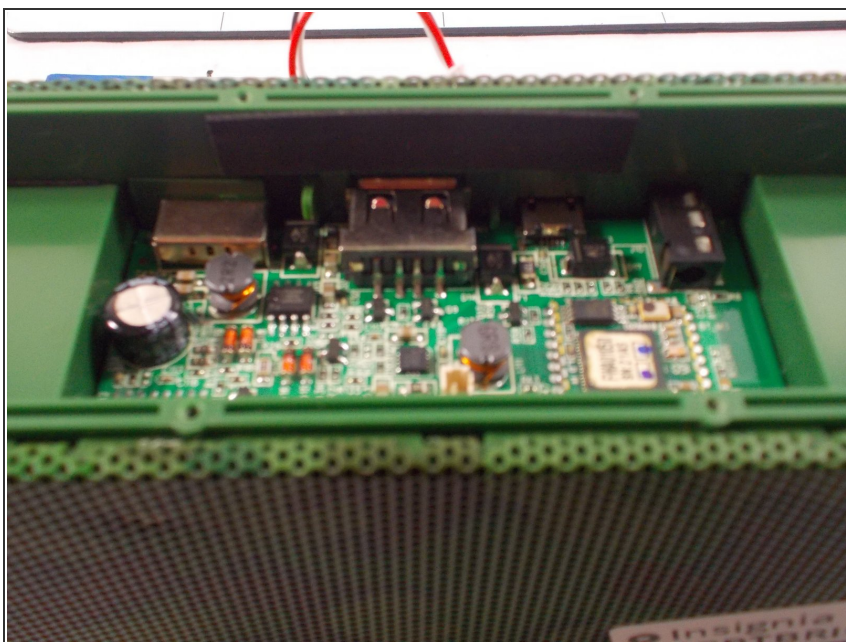
- Once the battery and back cover have been successfully removed, use the soldering iron. Place the soldering iron on the solders until properly heated.

Step 6



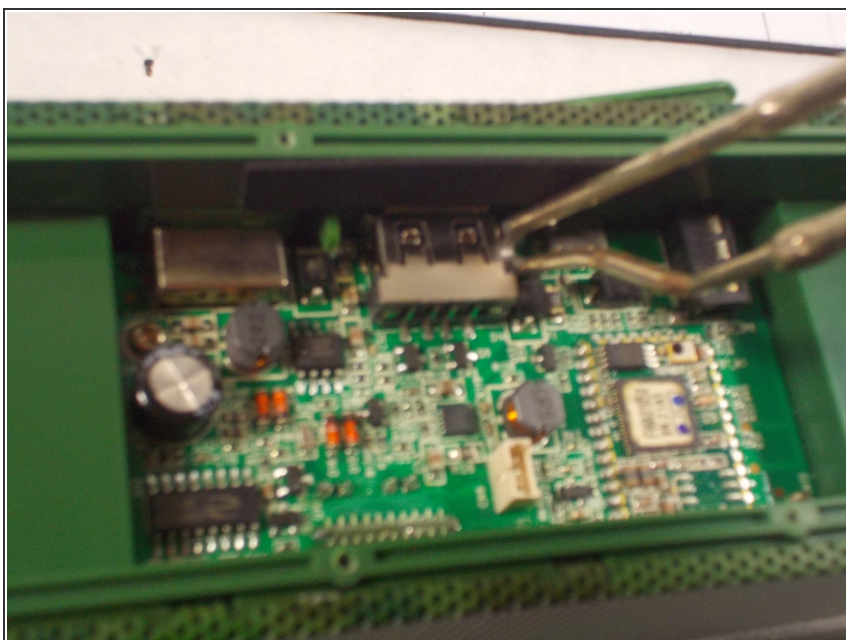
- Once the metal is heated, it will be easy to remove the piece. Be careful not to alter the circuit board in any way with the heat. Use tweezers to remove the old part. Be careful not to touch the piece with your hands because the piece will be very hot.

Step 7



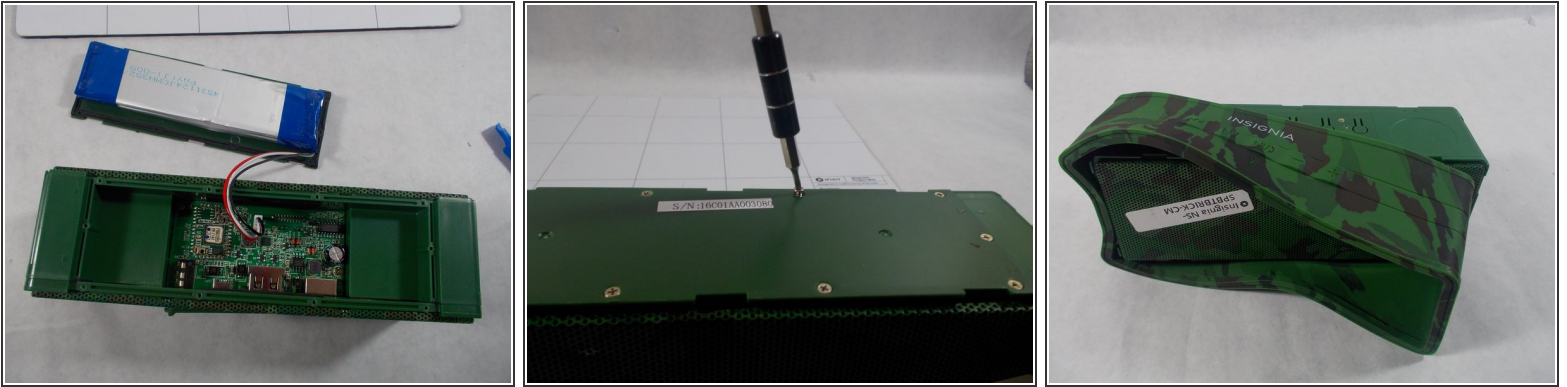
- Once the switch has been removed properly, place the new switch in the same spot as the old one.

Step 8



- Use the soldering iron to melt the existing solders and attach the new switch onto where the old switch was located.

Step 9



- After the new piece is properly melted into place, put the battery and back cover onto the device and screw the cover back on using the specified screwdriver and the ten screws.

To reassemble your device, follow these instructions in reverse order.