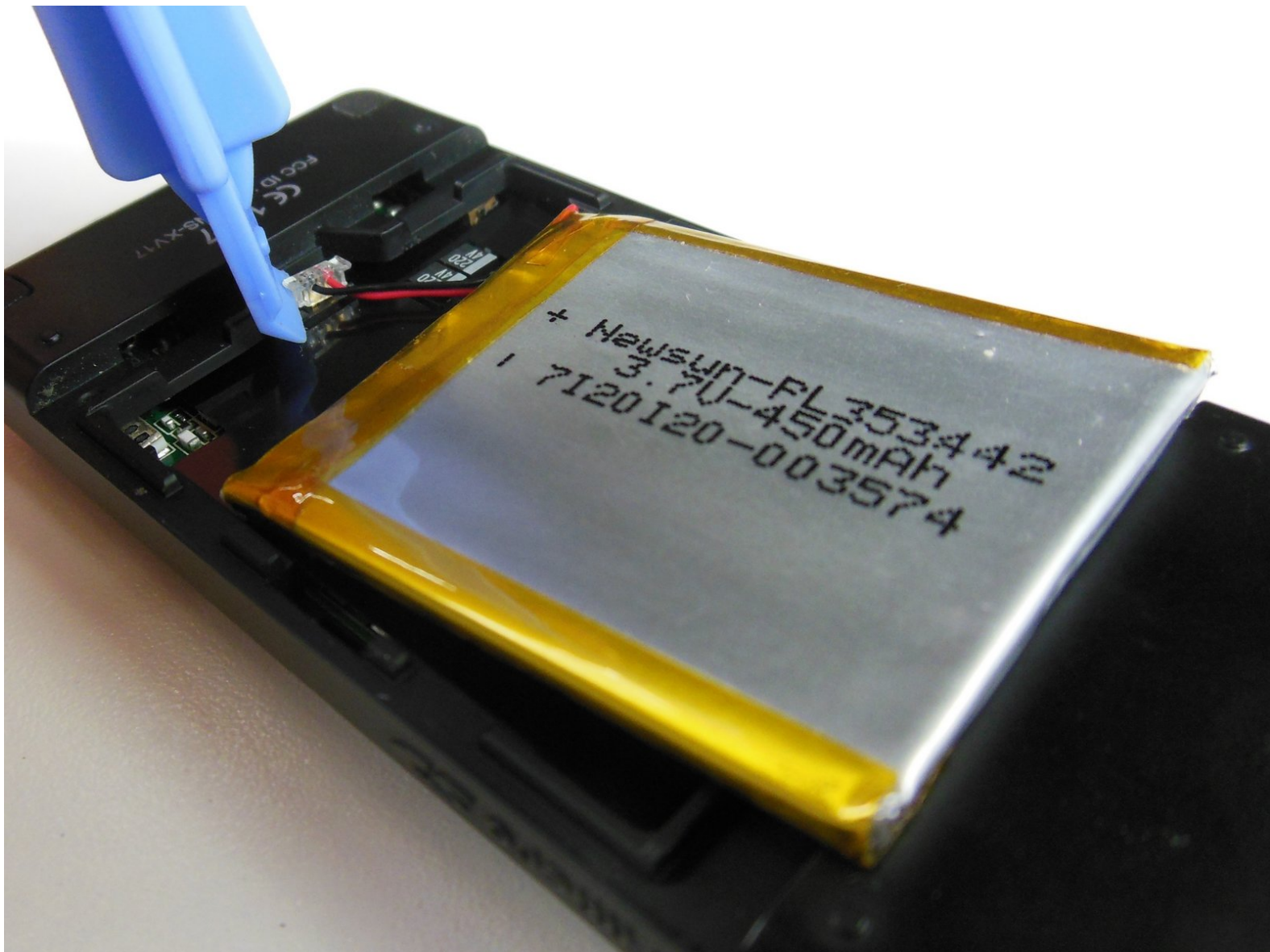




# Insignia Sport NS-4V17 Battery Replacement

Replacing the battery of your Insignia Sport NS-4V17.

Written By: David Poltorak



# INTRODUCTION

Does your device not turn on or does the power run out quickly? It is probably the result of a dysfunctional battery. This guide will show you how to remove your battery for a replacement. Be aware that this guide has some steps that can possibly damage the device.



## TOOLS:

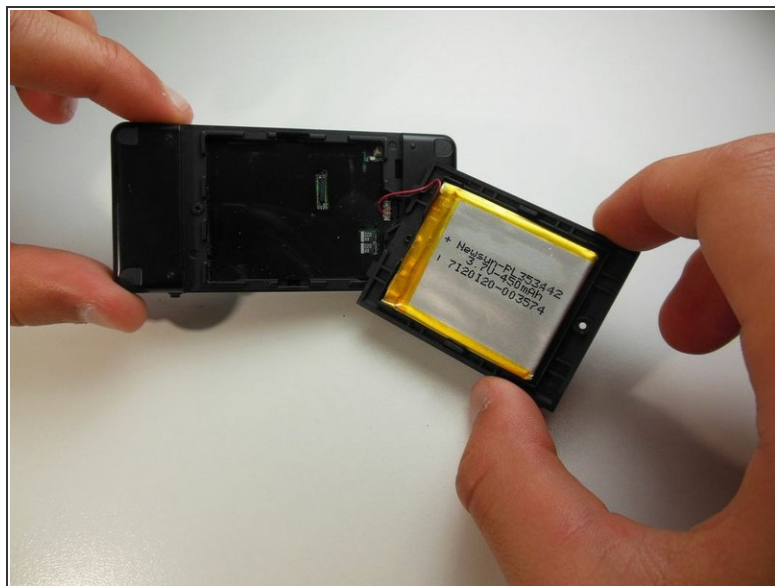
- [iFixit Opening Tools](#) (1)
  - [Phillips #00 Screwdriver](#) (1)
-

## Step 1 — Battery



- Remove the 3mm Phillips #00 screw on the back of the Insignia NS-4v17.

## Step 2



- Detach the back cover by carefully pulling up and out on the back plastic casing.

⚠ Do not pull apart the red wire connecting the battery to the device.



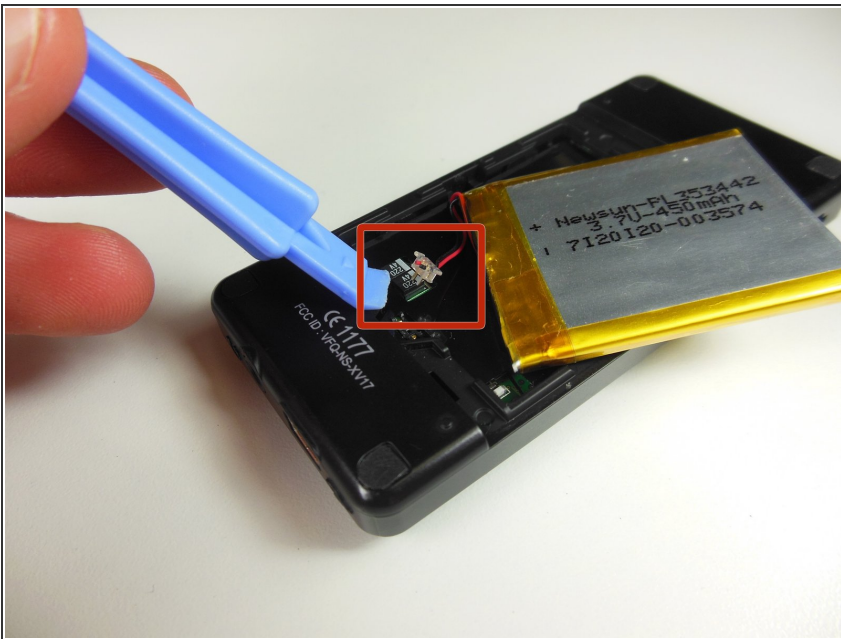
### Step 3



- Use the plastic opening tool to reach underneath the battery, opposite from the side with the red wire, and remove it from its plastic case.

⚠ Be careful to not tear the wires while opening the case.

### Step 4



- Reach under the white plastic wire connector using the plastic opening tool and disconnect it from the socket.

⚠ Do not disconnect wires from plastic connector.

To reassemble your device, follow these instructions in reverse order.