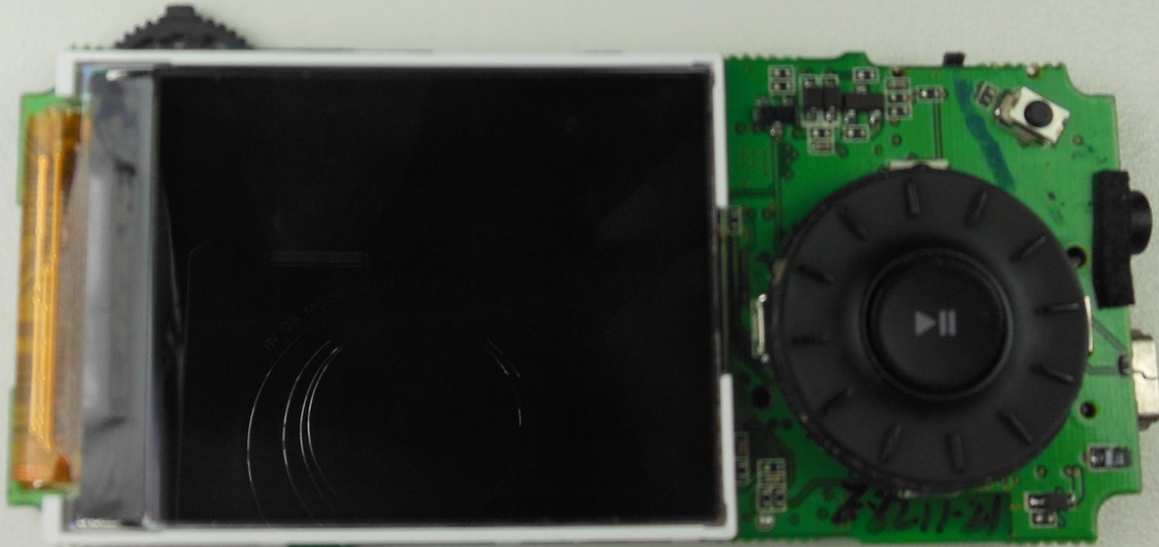




Insignia Sport NS-4V17 Motherboard Replacement

Use these instructions to install the motherboard for the Insignia Sport NS-4V17.

Written By: Wesley Ballar



INTRODUCTION

Can't identify the source of your problem and suspect that the motherboard has something to do with it? This guide will show you how to remove the motherboard. Buckle down because this is the longest guide.

TOOLS:

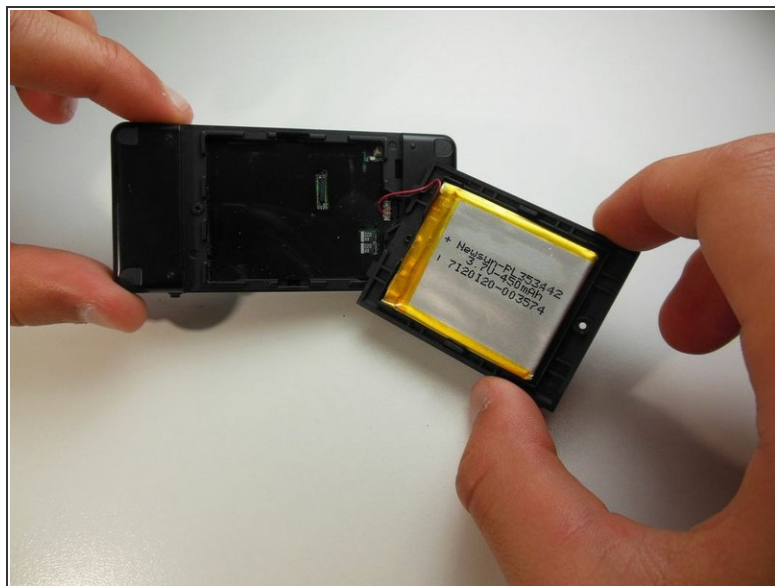
- [Phillips #00 Screwdriver](#) (1)
 - [iFixit Opening Tools](#) (1)
-

Step 1 — Battery



- Remove the 3mm Phillips #00 screw on the back of the Insignia NS-4v17.

Step 2



- Detach the back cover by carefully pulling up and out on the back plastic casing.

⚠ Do not pull apart the red wire connecting the battery to the device.

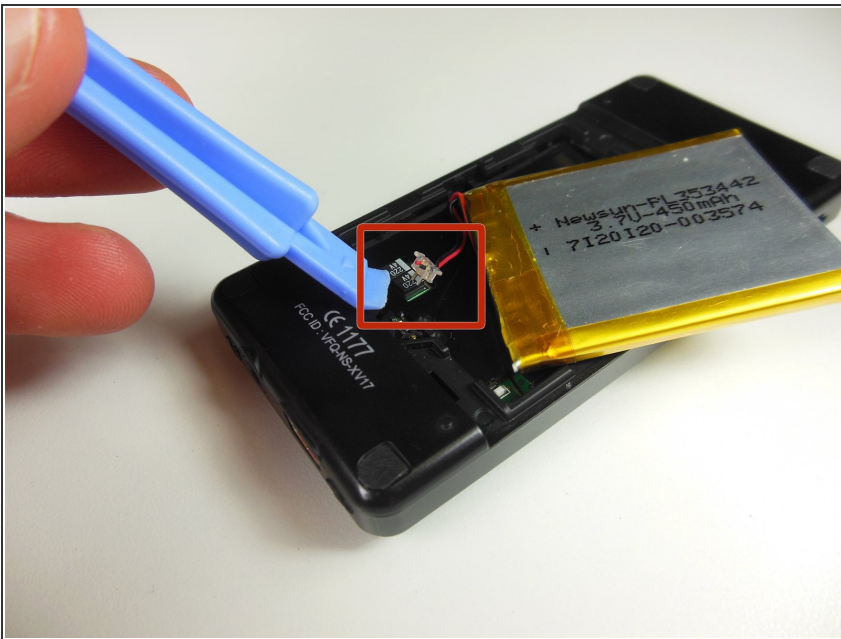
Step 3



- Use the plastic opening tool to reach underneath the battery, opposite from the side with the red wire, and remove it from its plastic case.

⚠ Be careful to not tear the wires while opening the case.

Step 4



- Reach under the white plastic wire connector using the plastic opening tool and disconnect it from the socket.

⚠ Do not disconnect wires from plastic connector.

Step 5 — Front Case Cover



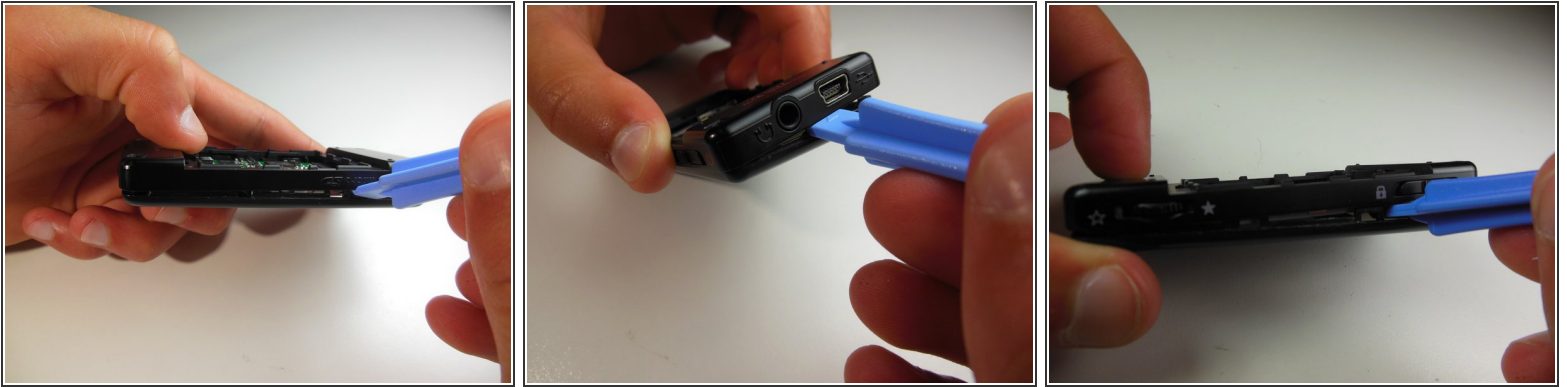
- Remove the four corner plastic covers on the back of the device using the plastic opening tool.

Step 6



- Using a Philips #00 screwdriver remove all four 4.5mm corner screws located underneath the corner pads.

Step 7



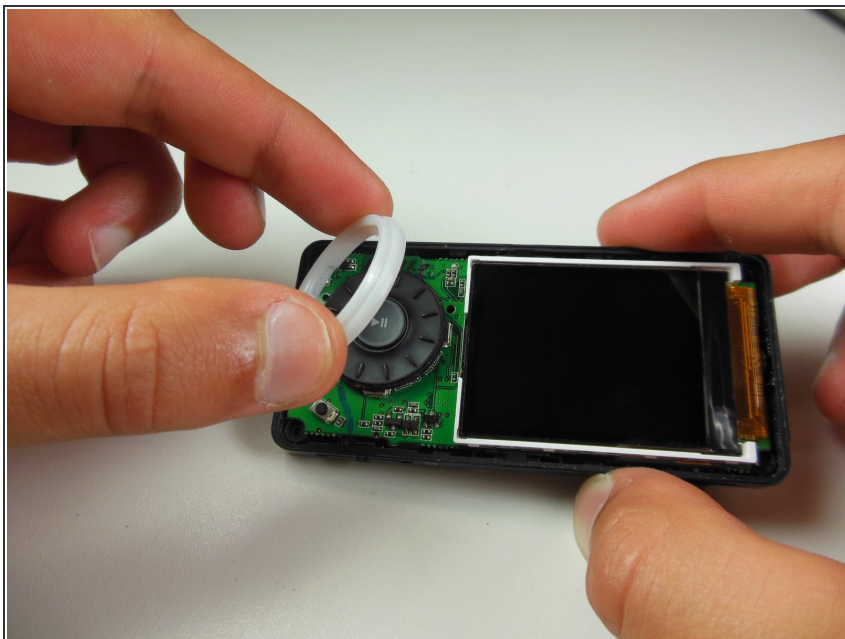
- Carefully wedge the plastic opening tool into either long side of the device.
- Slowly move the plastic opening tool along the side of the device, separating the front and back case covers.
- Repeat these steps on the other side of the device.

Step 8



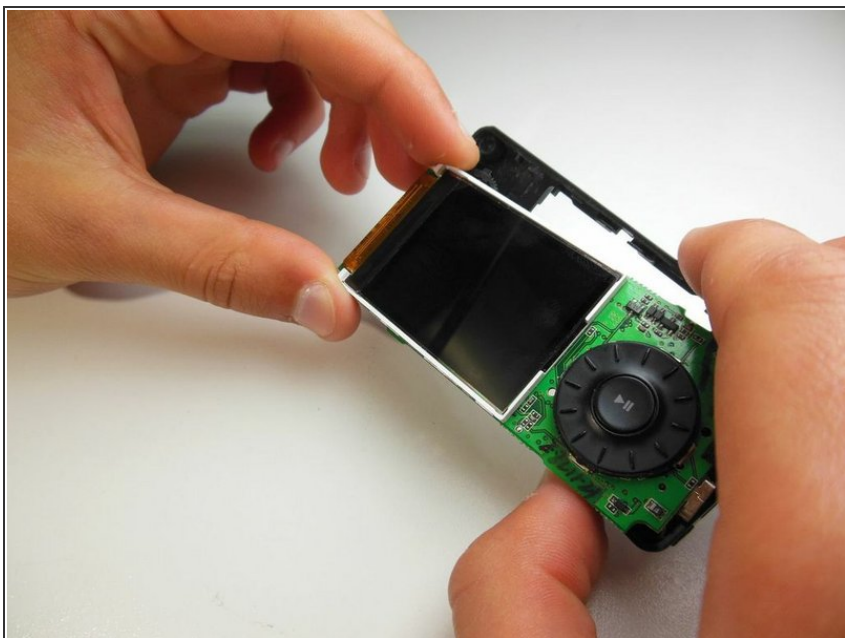
- Once the front cover is loose, use your fingers to remove the front case cover for a new installation.

Step 9 — Motherboard



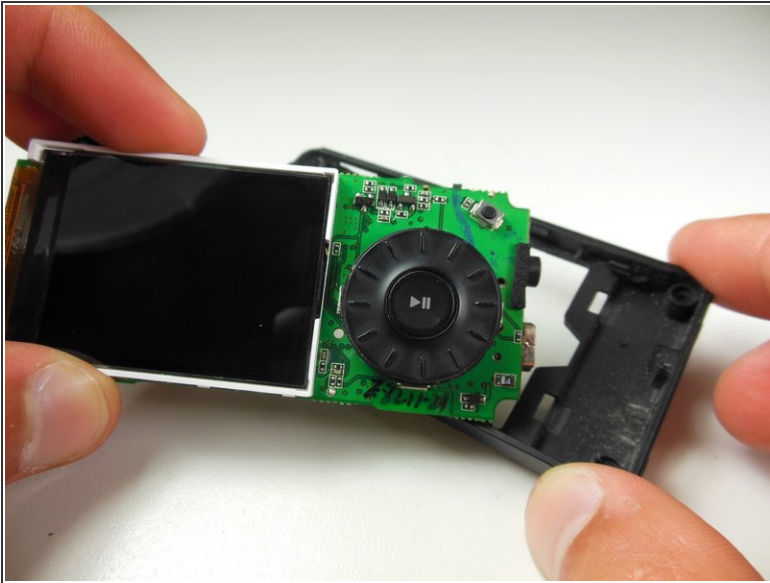
- Remove the white plastic ring from around the scroll wheel with your fingers.

Step 10



- Hold the sides of the device firmly with one hand.
- Push down on the black favorite switch with your other hand so that it is pushed into the case.

Step 11



- With the component pushed in, lift up the top of the motherboard from the case.
- Pull the motherboard from the top so that the audio jack and usb input are removed from the case socket.

To reassemble your device, follow these instructions in reverse order.