



Insignia Sport NS-4V17 Play/Pause Button Replacement

Use this guide to install the play/pause button on the Insignia Sport.

Written By: Wesley Ballar



INTRODUCTION

Unresponsive Play/Pause Button? Need to switch it out? This guide will show you how to remove the Play/Pause Button. This guide has a few tricky parts, but if you follow along you should have it off in no time.



TOOLS:

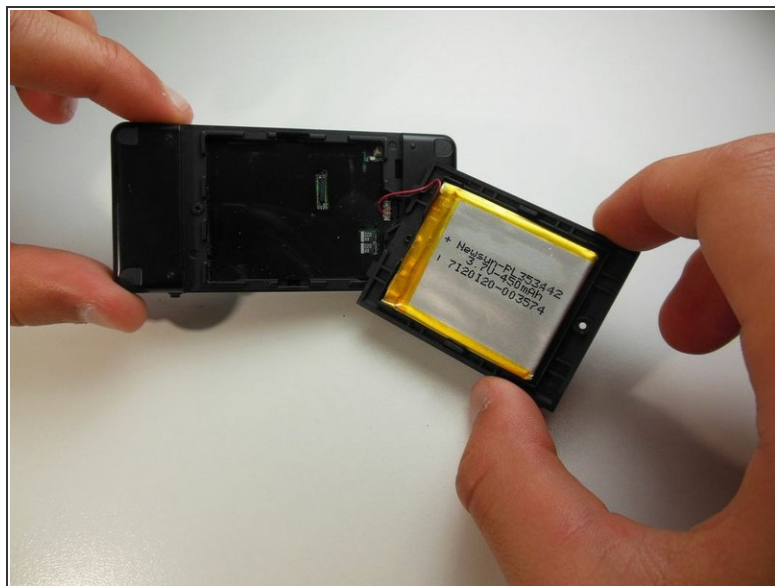
- [Phillips #00 Screwdriver](#) (1)
 - [iFixit Opening Tools](#) (1)
-

Step 1 — Battery



- Remove the 3mm Phillips #00 screw on the back of the Insignia NS-4v17.

Step 2



- Detach the back cover by carefully pulling up and out on the back plastic casing.

⚠ Do not pull apart the red wire connecting the battery to the device.

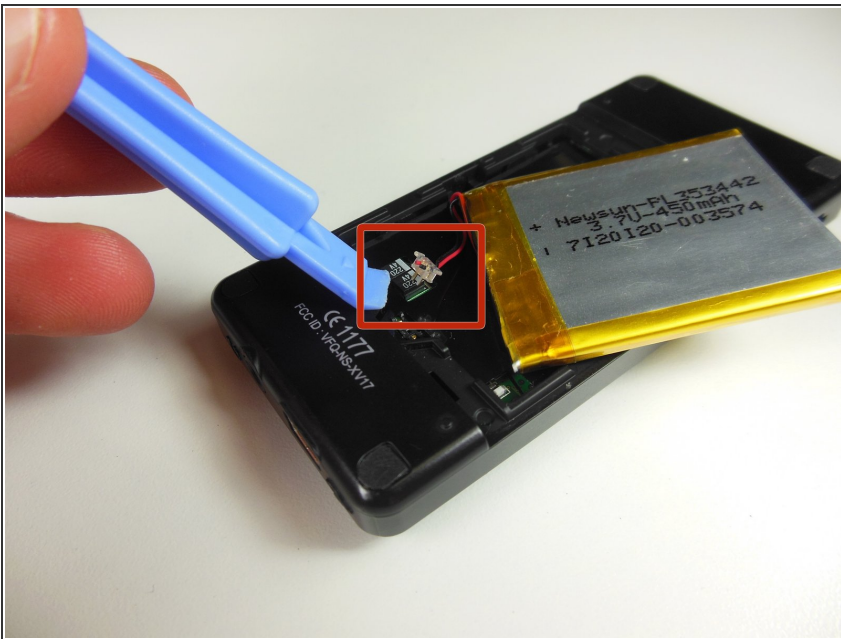
Step 3



- Use the plastic opening tool to reach underneath the battery, opposite from the side with the red wire, and remove it from its plastic case.

⚠ Be careful to not tear the wires while opening the case.

Step 4



- Reach under the white plastic wire connector using the plastic opening tool and disconnect it from the socket.

⚠ Do not disconnect wires from plastic connector.

Step 5 — Front Case Cover



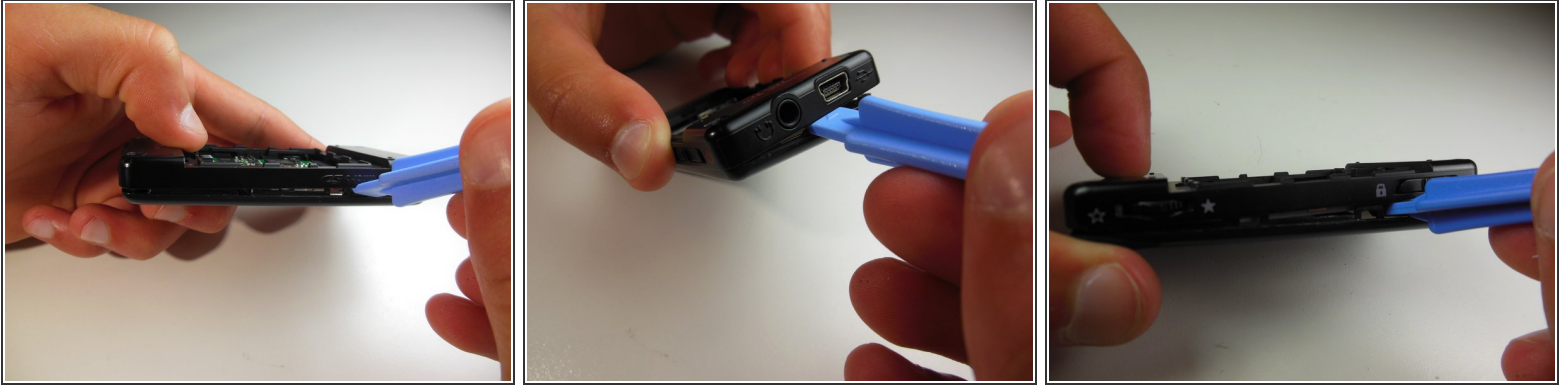
- Remove the four corner plastic covers on the back of the device using the plastic opening tool.

Step 6



- Using a Philips #00 screwdriver remove all four 4.5mm corner screws located underneath the corner pads.

Step 7



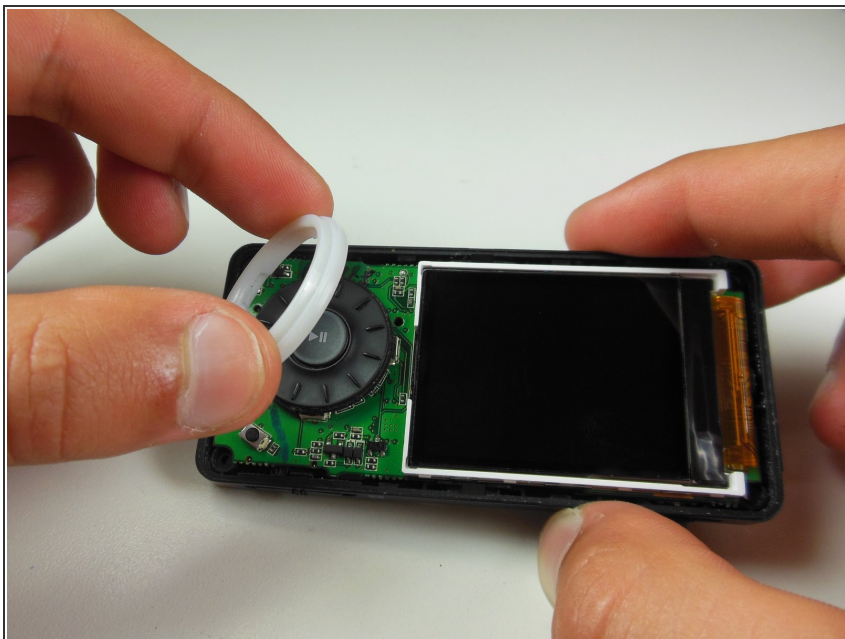
- Carefully wedge the plastic opening tool into either long side of the device.
- Slowly move the plastic opening tool along the side of the device, separating the front and back case covers.
- Repeat these steps on the other side of the device.

Step 8



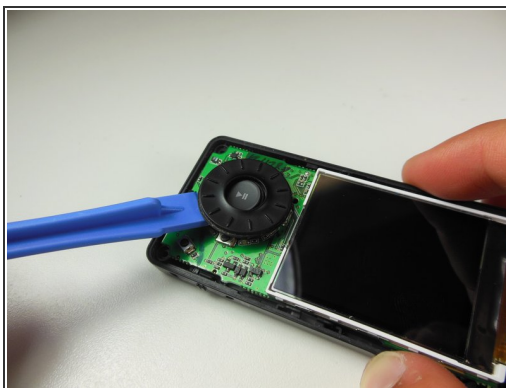
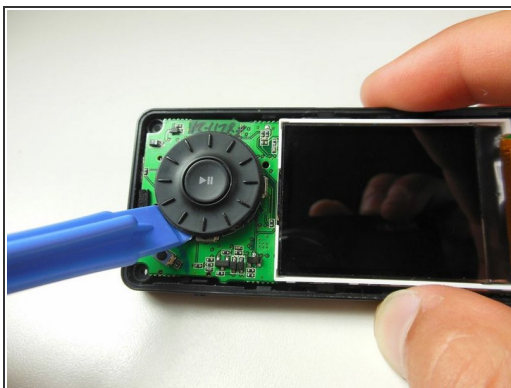
- Once the front cover is loose, use your fingers to remove the front case cover for a new installation.

Step 9 — Scroll Wheel



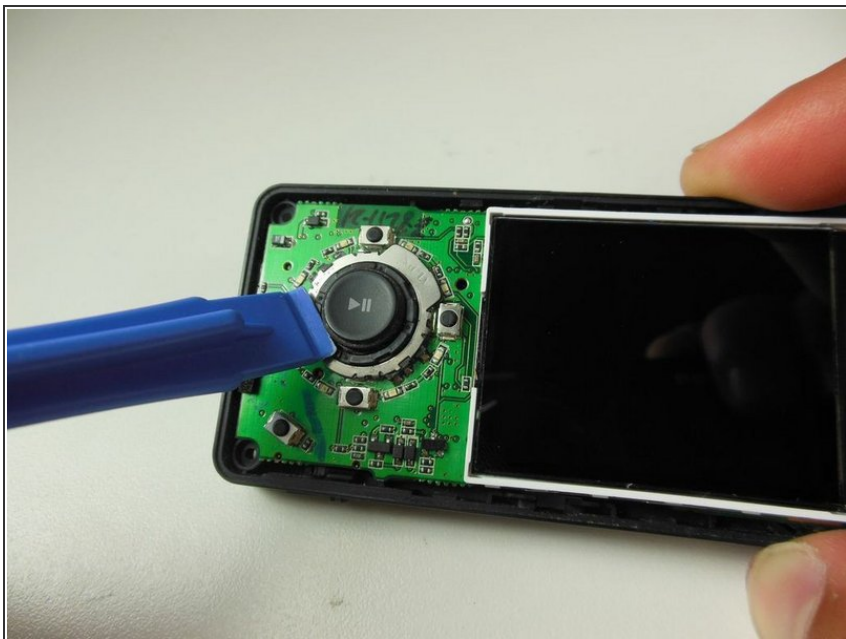
- Remove the white plastic ring from around the scroll wheel using your fingers.

Step 10



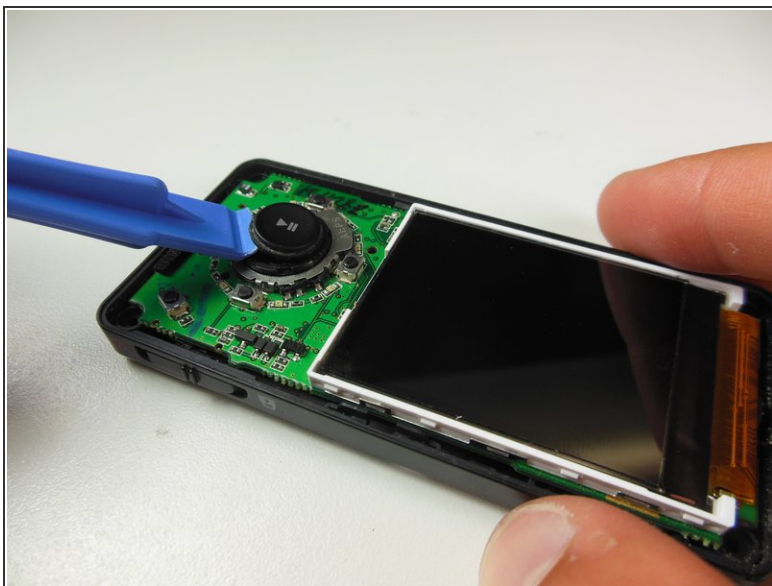
- Insert the plastic opening tool underneath any side of the scroll wheel.
- Slowly lift up on the plastic opening tool and the scroll wheel will come off.

Step 11 — Play/Pause Button



- Slightly insert plastic opening tool underneath any side of the play button.

Step 12



- Lift up slowly with the plastic opening tool and the play button should pop off.

To reassemble your device, follow these instructions in reverse order.