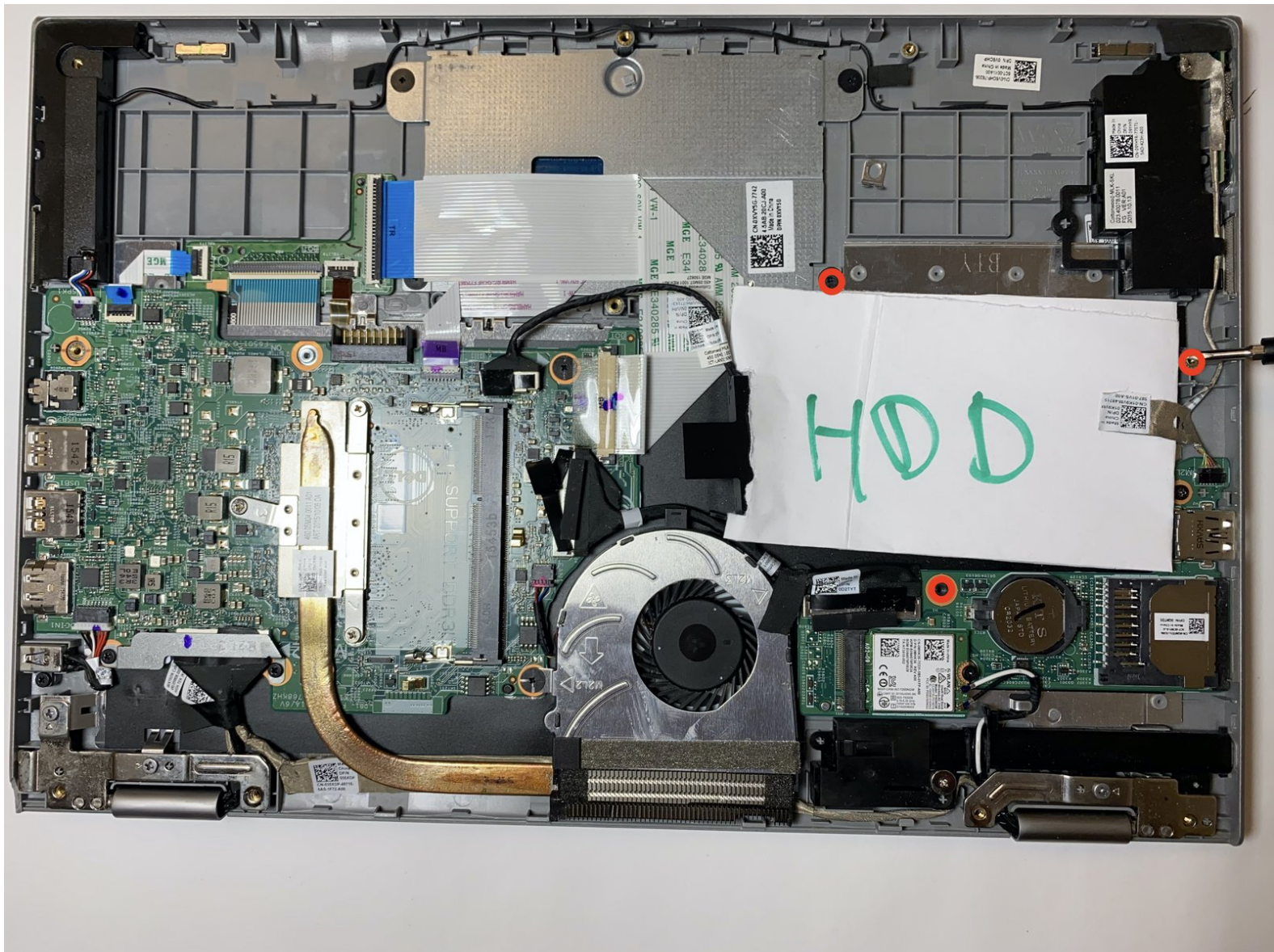




Inspiron 7359 2-in-1 Hard Disk Drive Replacement

This guide will show you how to replace the Hard Disk Drive of your laptop.

Written By: meetkumar desai



INTRODUCTION

This guide will follow you though to replace the HDD.



TOOLS:

- [iFixit Opening Tools](#) (1)
- [Anti-Static Wrist Strap](#) (1)
- [iFixit Precision Bit Driver](#) (1)
- [Metal Spudger](#) (1)
- [Phillips #0 Screwdriver](#) (1)
- [Small Plastic Spudger](#) (1)



PARTS:

- [500 GB SSD Hybrid 2.5" Hard Drive](#) (1)

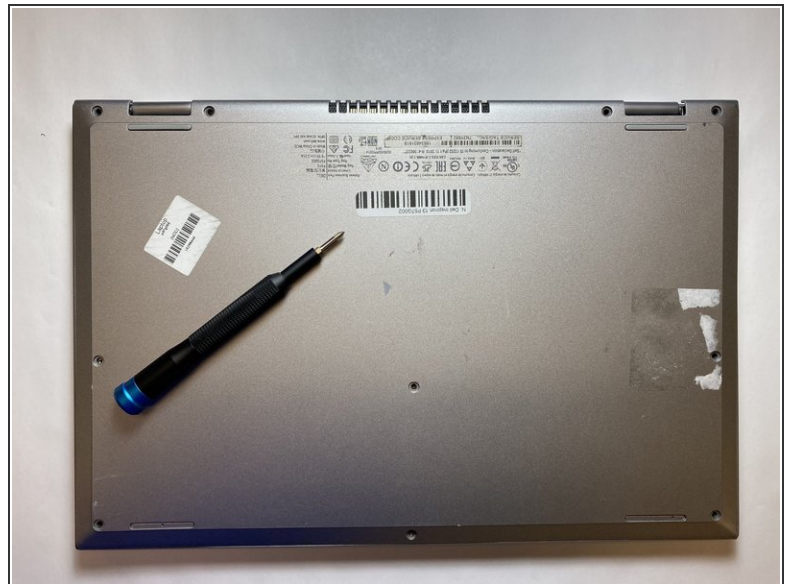
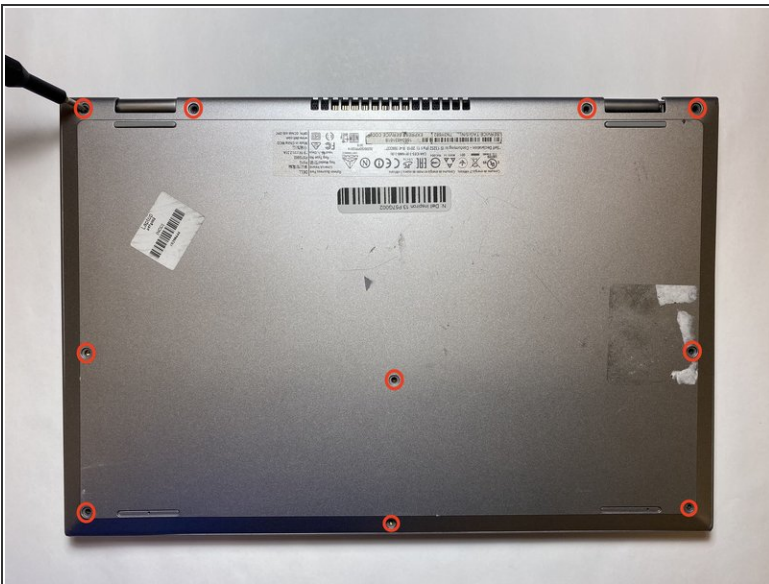
Step 1 — Disassembling the Inspiron 7359 2-in-1



 Turn off device before starting.

- Turn the laptop upside down with the logo facing the surface of the table.

Step 2



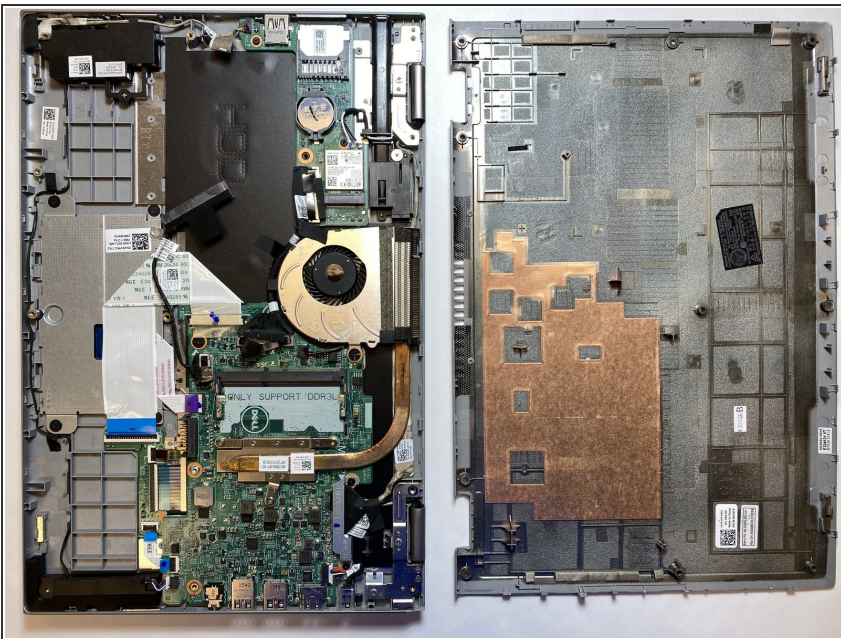
- Use a Phillips #0 screwdriver to remove the ten 8mm screws from the back case of the laptop.

Step 3



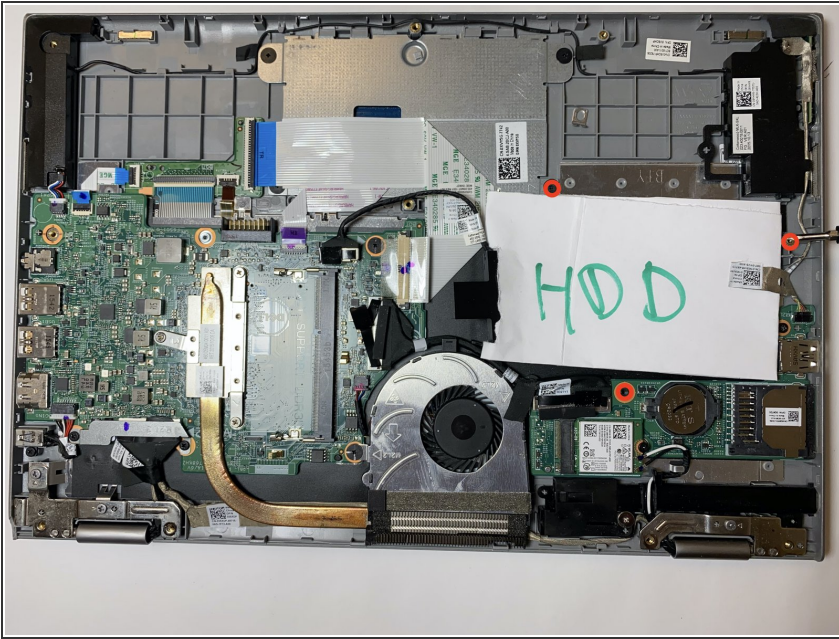
- Use a spudger to separate the back cover from the laptop.
- ⓘ Start from one corner and work your way around the edge of the cover.
- ⚠ Be careful not to bend or crack the back cover.

Step 4



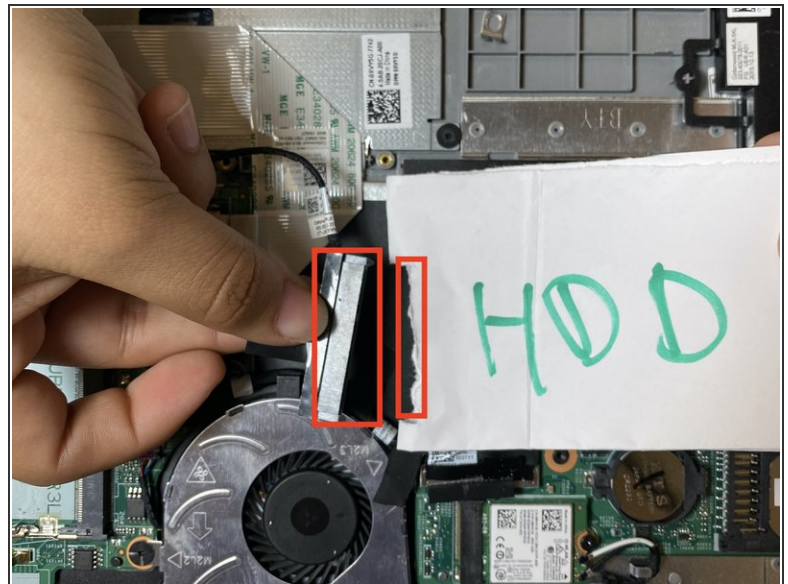
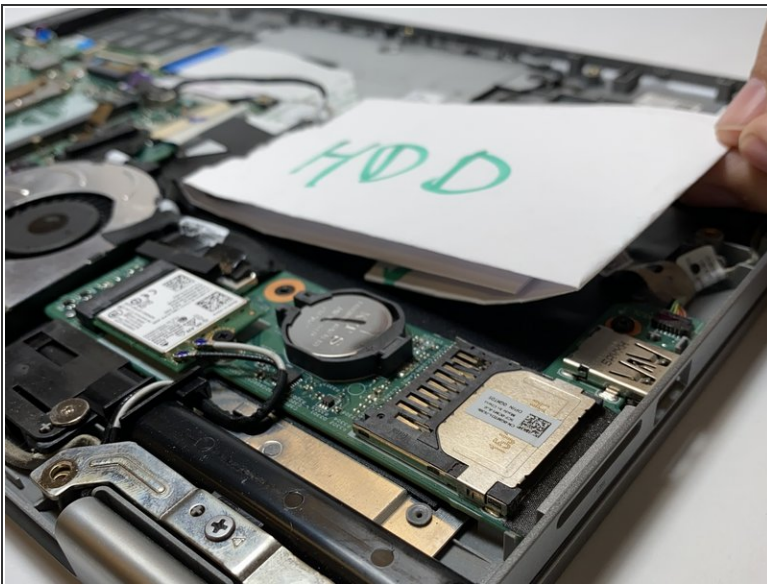
- All hardware components should be exposed.

Step 5 — Hard Disk Drive



- Unscrew three 3mm screws with a Phillips #0 screwdriver and remove them.
- These screws hold the hdd and removing these screws will make it easier to remove it.

Step 6



- Lift the hard drive from the left side. Be careful not pull on it.
- Pull the SATA cable that's connect to the hard drive and then carefully place the cable on the side.

To reassemble your device, follow these instructions in reverse order.