



Inspiron 7359 2-in-1 WiFi Card Replacement

How to replace the WiFi card.

Written By: Annberlisa Ronald





TOOLS:

- [Phillips #0 Screwdriver](#) (1)
 - [iFixit Opening Tools](#) (1)
 - [Anti-Static Wrist Strap](#) (1)
 - [iFixit Precision Bit Driver](#) (1)
 - [Metal Spudger](#) (1)
 - [Spudger](#) (1)
-

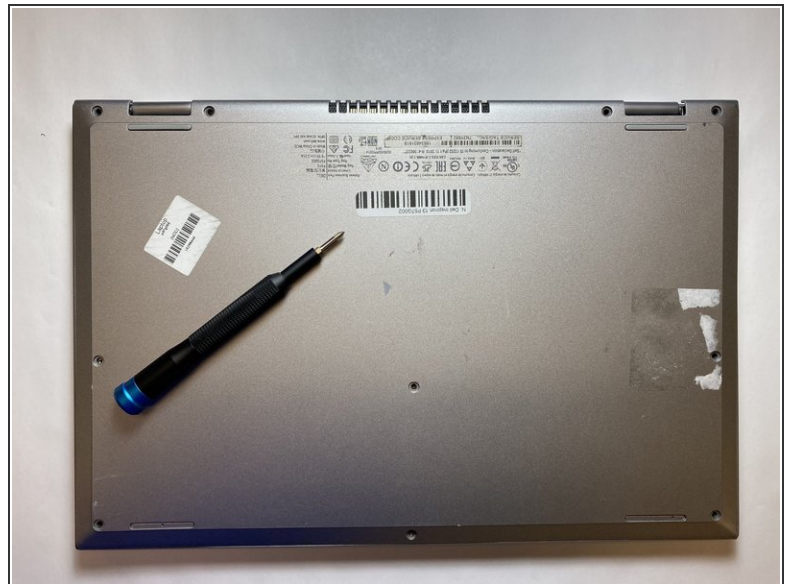
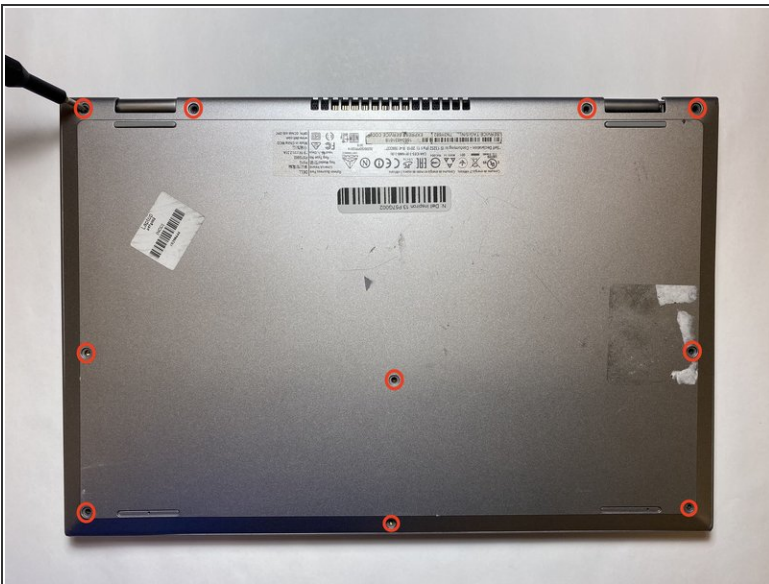
Step 1 — Disassembling the Inspiron 7359 2-in-1



⚠ Turn off device before starting.

- Turn the laptop upside down with the logo facing the surface of the table.

Step 2



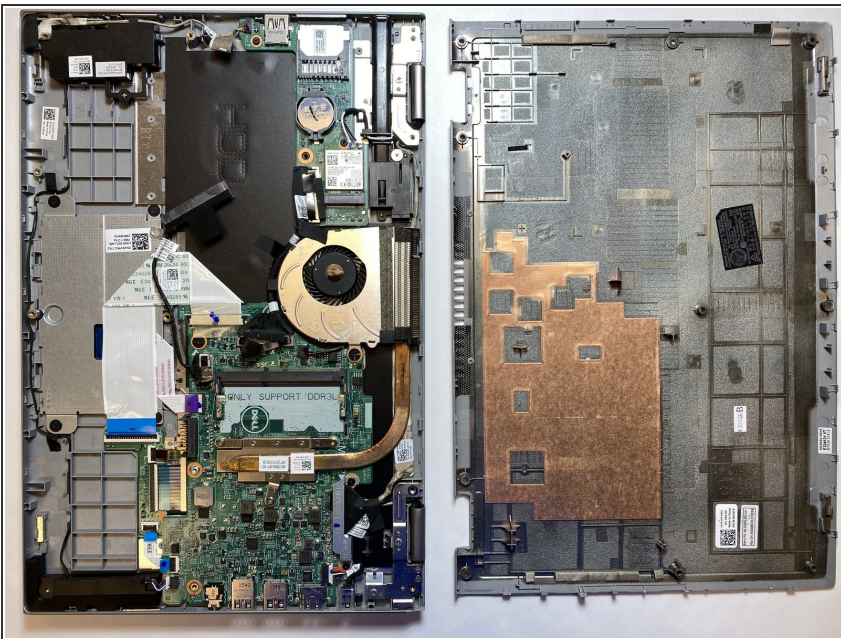
- Use a Phillips #0 screwdriver to remove the ten 8mm screws from the back case of the laptop.

Step 3



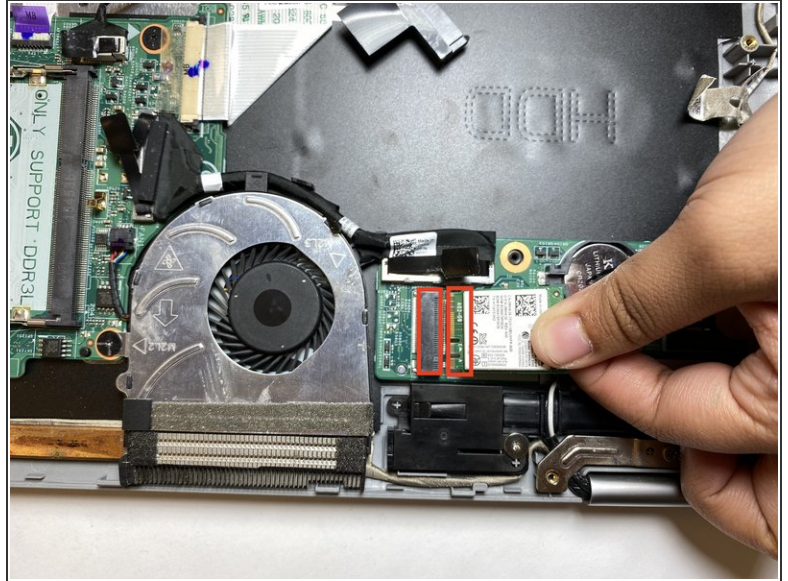
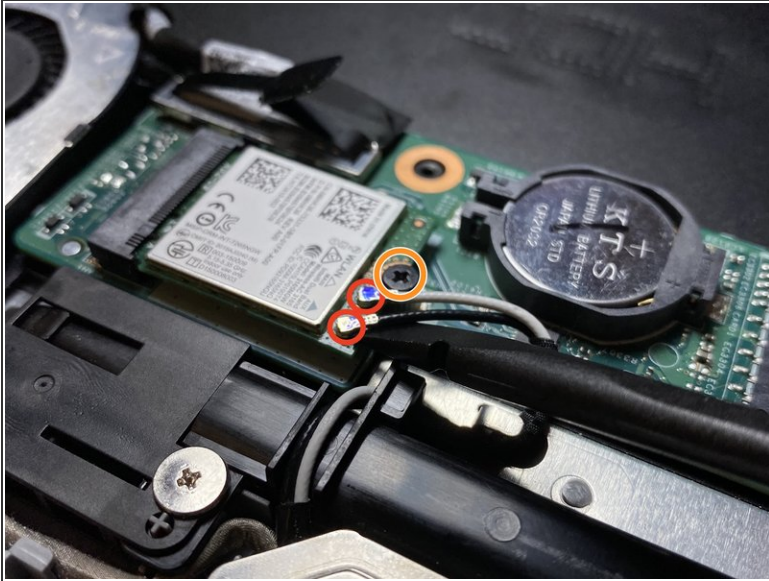
- Use a spudger to separate the back cover from the laptop.
- ⓘ Start from one corner and work your way around the edge of the cover.
- ⚠ Be careful not to bend or crack the back cover.

Step 4



- All hardware components should be exposed.

Step 5 — WiFi Card



- Use the spudger tool to remove the two antenna cables.
- Remove the black screw.
- Slightly pull up the end and remove the WiFi card. Be careful not to damage the internal adapter.

To reassemble your device, follow these instructions in reverse order.