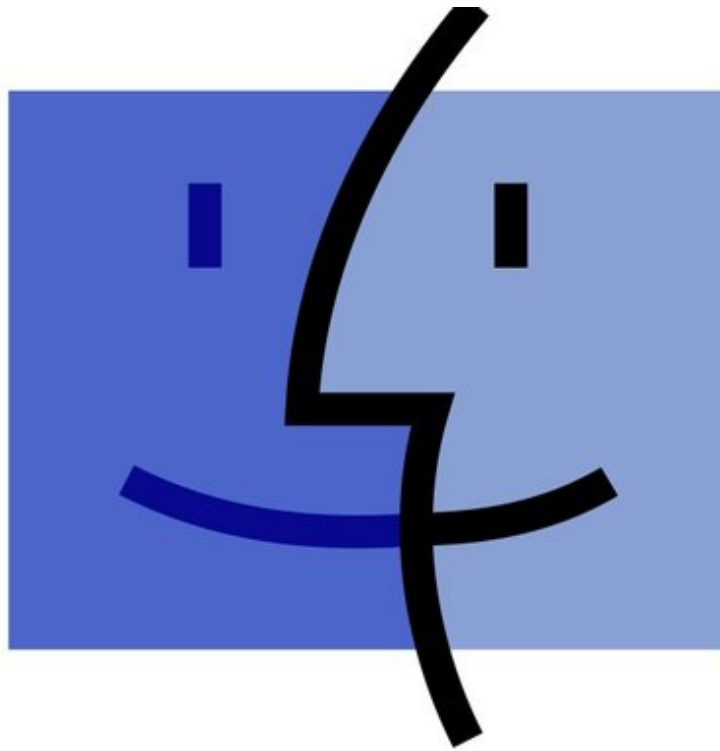




Install Drivers on current versions of macOS

This Guide explains how to install drivers for this printer current versions of macOS (>Mac OS X 10.4).

Written By: Beerwema



MacTM OS

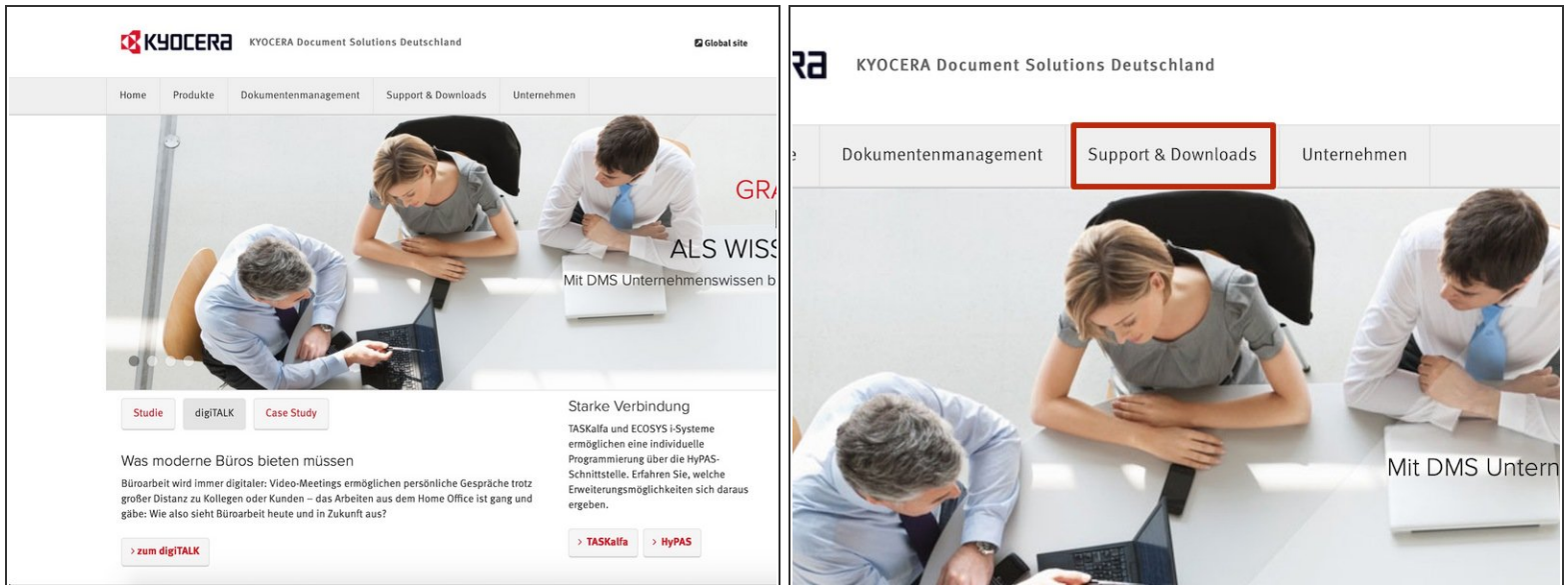
INTRODUCTION

Kyocera only provides drivers for Mac OS 9 and Mac OS 10.4 for the FS-1010. In this Guide a workaround is used to be able to install drivers for this printer on current versions of macOS.

This Guide was tested on macOS 10.14 Mojave.

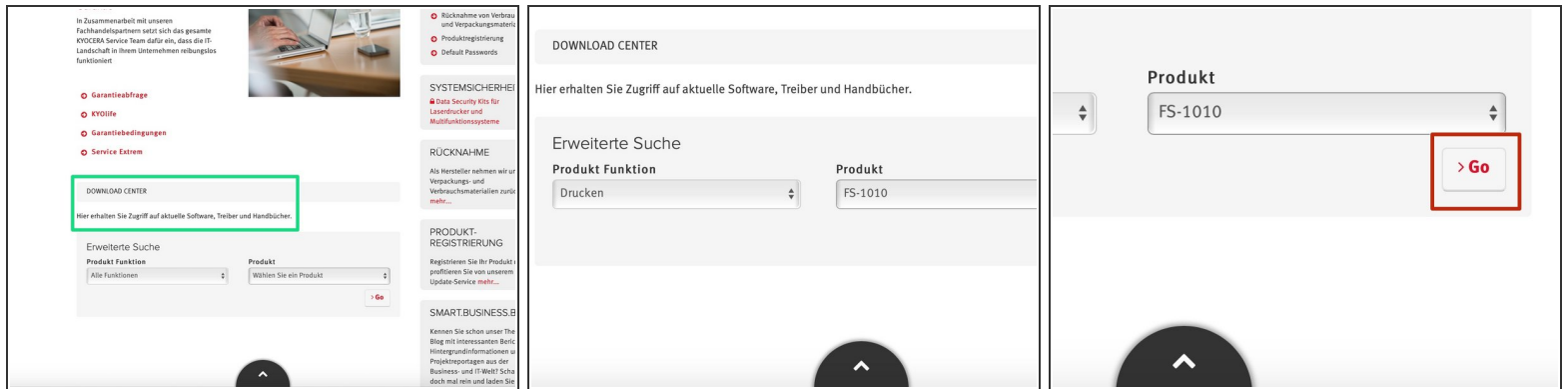
Even though this guide is written for the FS-1010, you may be able to install drivers for other Kyocera printers or even printers from other manufacturers as well using this guide. You may need to adapt the steps to your conditions and circumstances.

Step 1 — Open the web page



- Visit <https://www.kyoceradocumentsolutions.de>
- Click on the Category "Support & Download" at the top of the site
- ① Note for readers from English-speaking countries: I wasn't able to locate the drivers for the FS-1010 on the site for the USA. Also, I wasn't able to obtain screenshots which show the english version of the menus, buttons etc. If you are able to obtain fitting screenshots or if you are able to correct the translations, feel free to edit the guide

Step 2 — Choose the printer



- On the opening web page, scroll down until you get to the Download-Center.
- Choose "Drucken" under Produkt Funktion and "FS-1010" under Produkt.
- Click on >Go afterwards.

Step 3 — Download the driver

KX Treiber (zertifiziert und signiert von Microsoft)	6.2.1113	71,46 MB	KX_v621113_UPD_Signed_eu.zip
Classic Universal Treiber KPD / PCLSe/c / PCL6 (zertifiziert und signiert von Microsoft)	3.1	16,20 MB	KyoceraClassicU...v31_signed.zip
Classic PCL Treiber (zertifiziert und signiert von Microsoft)	GPD 3.4	1,11 MB	FS-1010_PCL.zip
Classic KPD Treiber (zertifiziert und signiert von Microsoft)	PPD 7.8	146,81 KB	FS-1010_KPD.zip
KPD Classic Treiber	PPD 8.4	8,84 MB	Mini-KPD-Win2KXP-v8.4.zip
Classic PCL Treiber	GPD 4.2	2,40 MB	Mini-PCL-Win2K_XP-v4.0.exe

Mac

Beschreibung	Version	Dateigröße	Dateiname	Info
Macintosh OS 9 Installer		5,53 MB	Kyocera OS 9 v1.4.sit	
Macintosh OS X Installer	10.8	7,55 MB	OS X 10.4.hqx	!

Linux

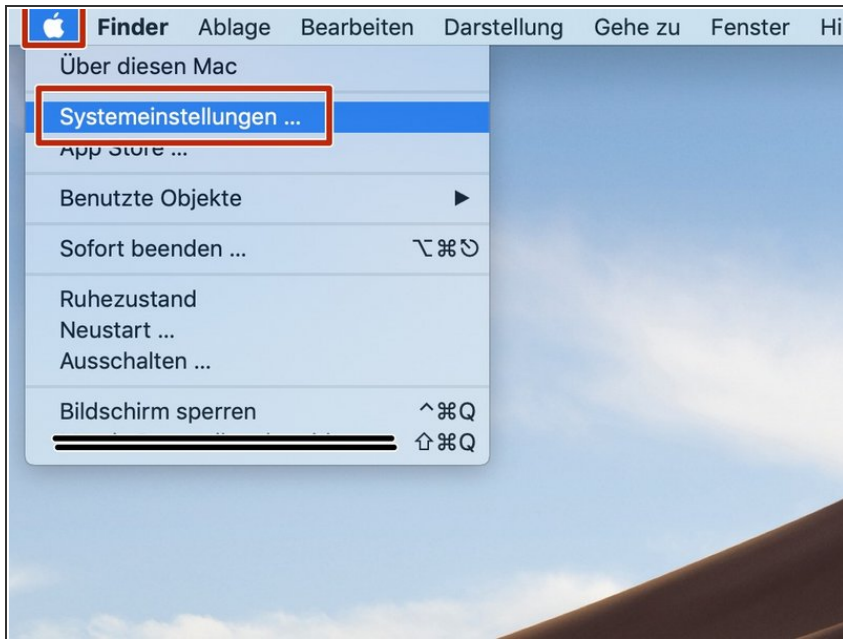
Beschreibung	Version	Dateigröße	Dateiname	Info
Linux PPDs	PPD 8.4	6,17 MB	Linux_PPDs_KSL8_4.zip	!

> Datenschutz > Partnerprogramm © K

n > Seitenübersicht > Datenschutz > Partnerprogramm © KYOCERA Document Solutions Deutsch

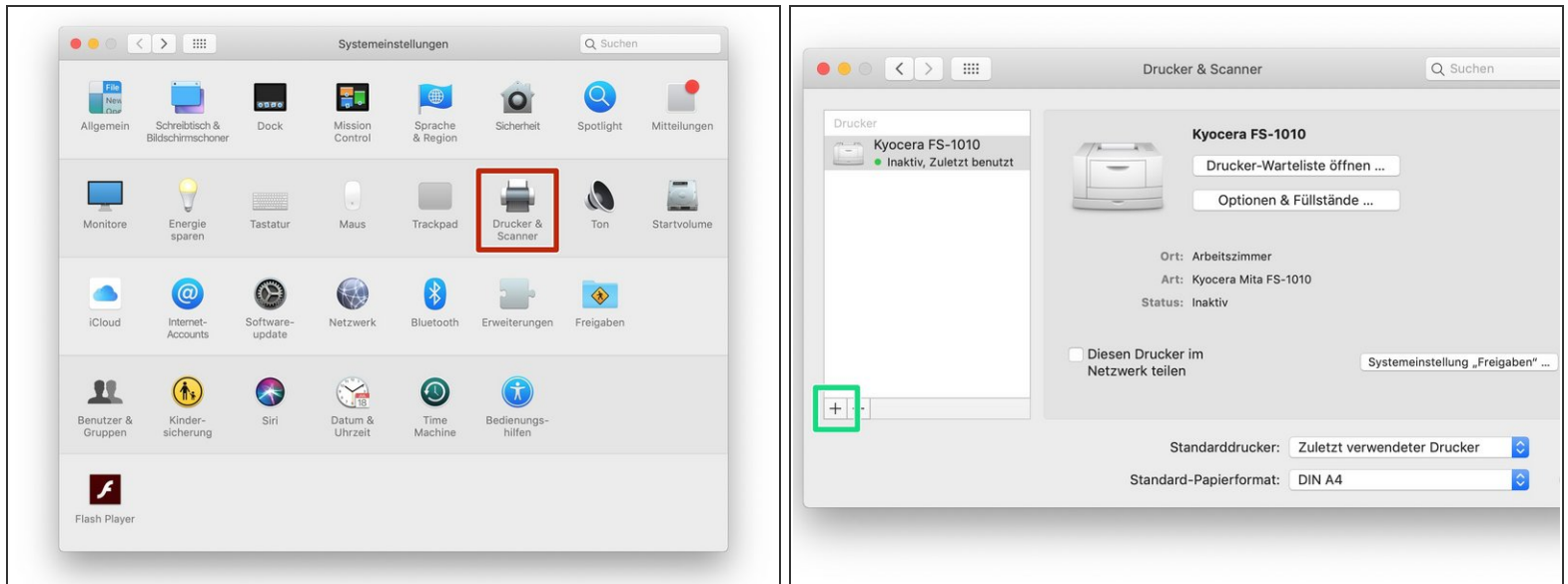
- Scroll all the way down until you get to the drivers for Linux and Mac.
- i If you use Mac OS 9 oder Mac OS X 10.4, you should use the official Mac-Drivers provided by Kyocera, since those are optimized for use with the Mac. For everyone who uses a newer version of macOS, the drivers are not usable. Continue with this guide to still install drivers for macOS.
- Download the Linux-Drivers (Linux PPDs) by clicking the fitting link.

Step 4 — Power on the printer and open system preferences



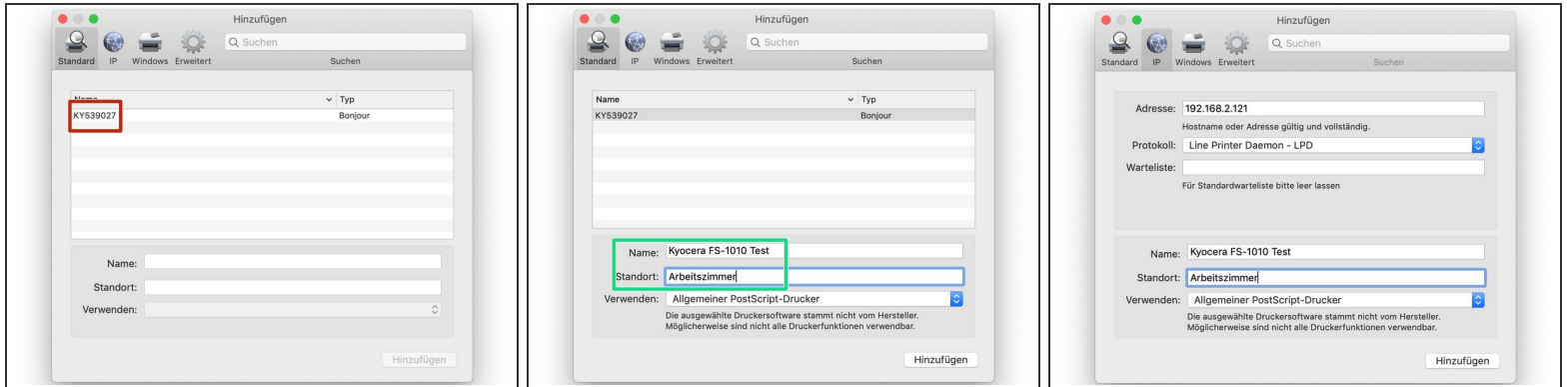
- Connect the printer via USB with your Mac or use a LAN-Cable to connect the printer to your local network.
- ❗ For connecting the printer to a local network you need a separately available network card, which you need to add to your printer.
- Turn on the printer by flicking the switch on the back side. Wait until only the first Status LED is light up.
- Click on the Apple-Logo in the top left corner and then open "System Preferences".

Step 5 — Add the printer



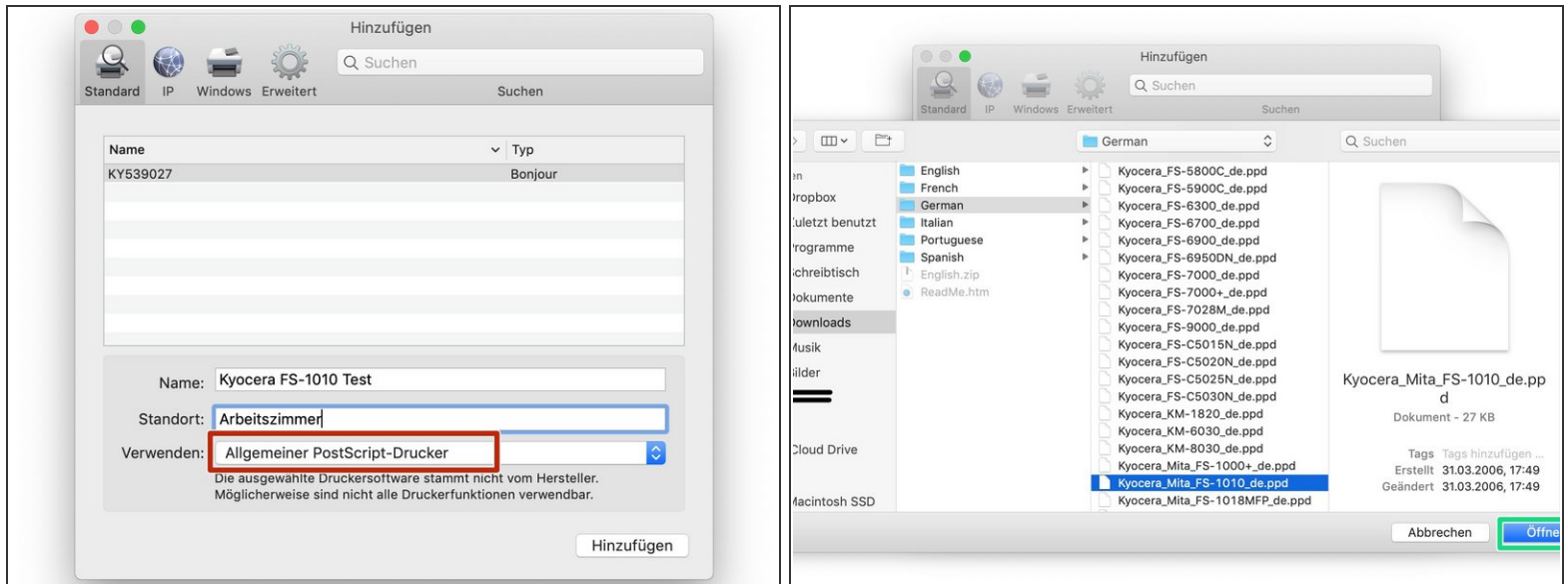
- Click on the Icon for "Printers & Scanners", after the system preferences we're opened.
- Afterwards click in the opening window on the small + in the down left corner.

Step 6 — Choose the printer



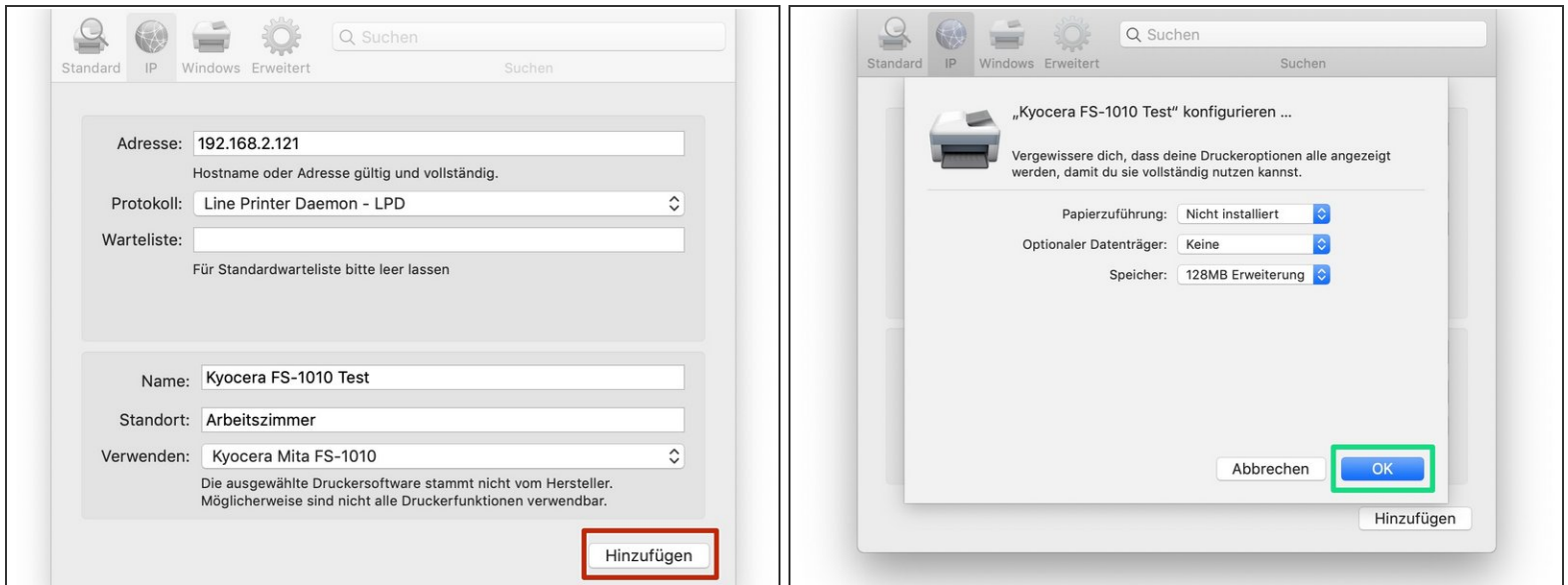
- Choose your printer in the list to configure it.
 - Give the printer a name and a location (optional).
- i** If your printer doesn't show up in the list and it is connected via LAN, click on "IP" at the top of the windows and enter the IP-Adress manually (Picture 3). You can find out the IP Address by printing a test page (hold the start-button for five seconds).
- !** Don't click on "Add" just now, otherwise it will use the standard-driver.

Step 7 — Choose the driver



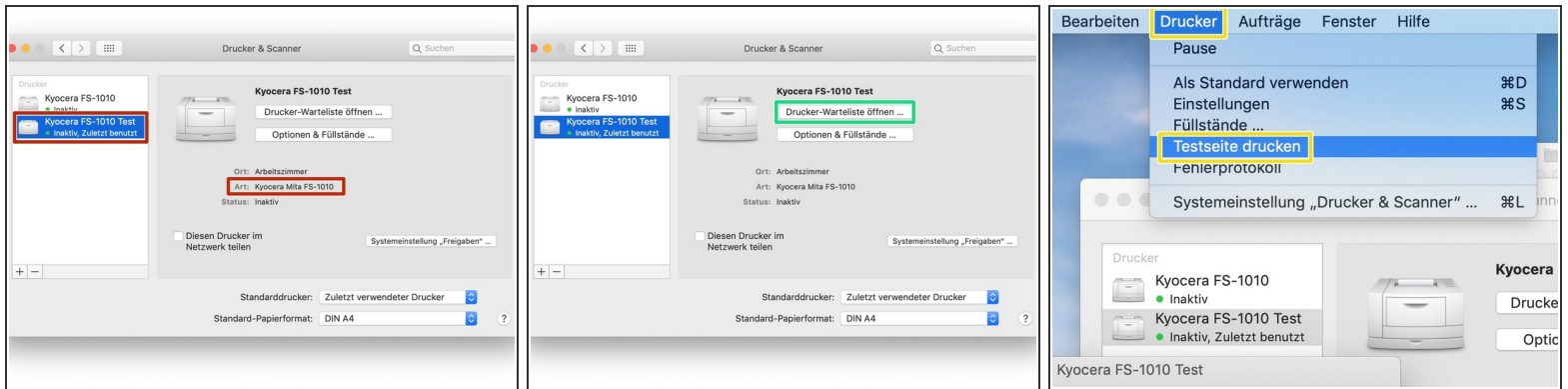
- Open the menu next to the line "Use" and choose "Other file...".
- Navigate to the Downloads-folder and then into the folder you just downloaded (PPD's_KSL_8.4).
- ❗ The driver gets delivered in a .zip format. Normally, macOS automatically unpacks a zipped folder. If that's not the case, you need to unzip it first.
- Navigate to the sub-directory "English" and choose the file "Kyocera_Mita_FS-1010_en.ppd".
- Afterwards click on the button "Open" in the down right corner.

Step 8 — Finish the installation



- Now the name of the driver should show up under "Use". Now you can click on "Add".
- The printer now gets configured.
- In the now opening window you need to select the options that are available in your printer. If your done, press "OK" in den down right corner.

Step 9 — Test the printer



- After the installation is completed, the printer and the correct driver should show up in the list.
- To print a test page, click on "Open printer wait list...".
- Afterwards, click on Printer -> print test page.
- If the test page gets printed without any problems, the installation was successful. The printer now gets used with the fitting Kyocera driver.
- ① With the Kyocera-driver you can use all the accessories in the printer in macOS. Additionally, the speed gets improved.
- ① Even though this guide was specifically written for the FS-1010, you can adapt the guide to other Kyocera printers or even printers from different manufacturers, as long as they provide a PPD for Linux.