



# Install Porsche Cayenne LED Switchback Side Marker Lights

This guide shows you how to install a set of switchback LED Side Marker Lights on your Porsche Cayenne. Installation is very straightforward and you will get a new LED look in no time.

Written By: Eric Wu



This document was generated on 2019-09-18 07:07:16 PM (MST).

---

## INTRODUCTION

This LED Switchback side markers is a direct replacement for your OEM side markers to make your Porsche Cayenne be unique.

---



### PARTS:

- [iJDMTOY Porsche Cayenne LED Side Marker Lights](#) (1)
-

## Step 1 — LED Switchback Side Marker Lights



- Turn the wheel inside
- Remove the clips in the wheelbase to access the back of the side marker.

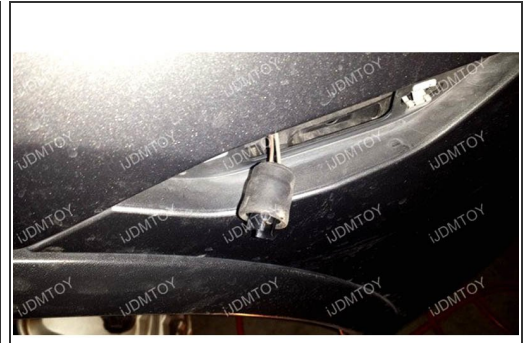
## Step 2



- Remove the screw securing the stock amber side marker.
- Remove amber side marker.

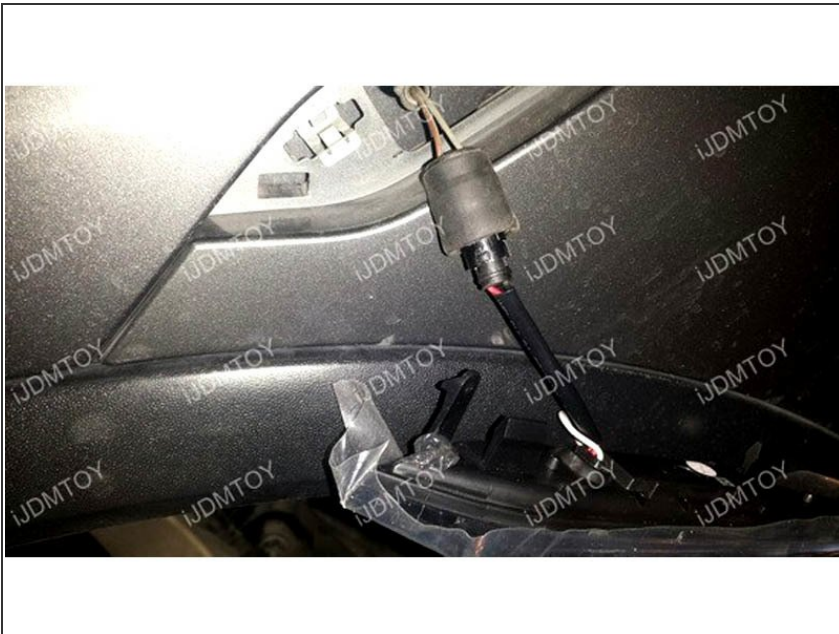


### Step 3



- Unplug stock side marker.
- Remove stock bulb.
- Replace with new LED side marker.

### Step 4



- Connect additional white wire to the ACC or Existing LED Daytime Running Lamp Positive

## Step 5



- Test everything to check if everything works correctly.
- Put all components back the same way it was removed.

## Step 6



- Enjoy the new Porsche Cayenne LED side marker lights.

You can see that the installation process is very straightforward. Your Porsche Cayenne is now extremely unique on the road with these switchback LED side marker lights!

This document was generated on 2019-09-18 07:07:16 PM (MST).

