



Written By: KimJonglan



INTRODUCTION

Guide created by KimJonglan

With help by iFixit users Andrew and MervDervis

This guide would not be possible without the script made by user tai1976 from gbatemp.net



TOOLS:

- [iFixit Opening Tools](#) (1)
 - [T10 Torx Screwdriver](#) (1)
-

Step 1 — Warning



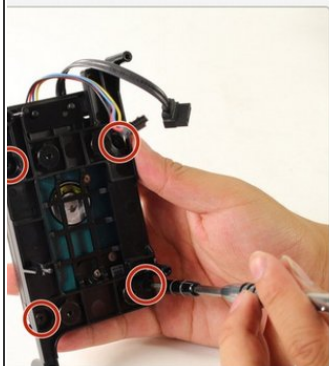
- Before doing any updates or software changes with the Hard Drive connected to the motherboard, make sure that all connections to the board are secure, such as the disc drive, otherwise you will brick the Motherboard, and will require a new one.

Step 2 — Prerequisites

Xbox One S Hard Drive Replacement

Written By: Andrew (and 3 other contributors)

Comments: 2 Favorites: 6 Completions: 7



Difficulty

Steps

Time Required 30

Sections

Flags

- Before beginning this guide, it is best to read through the steps for the hardware portion, as shown by

iFixit user Andrew, at the following link.

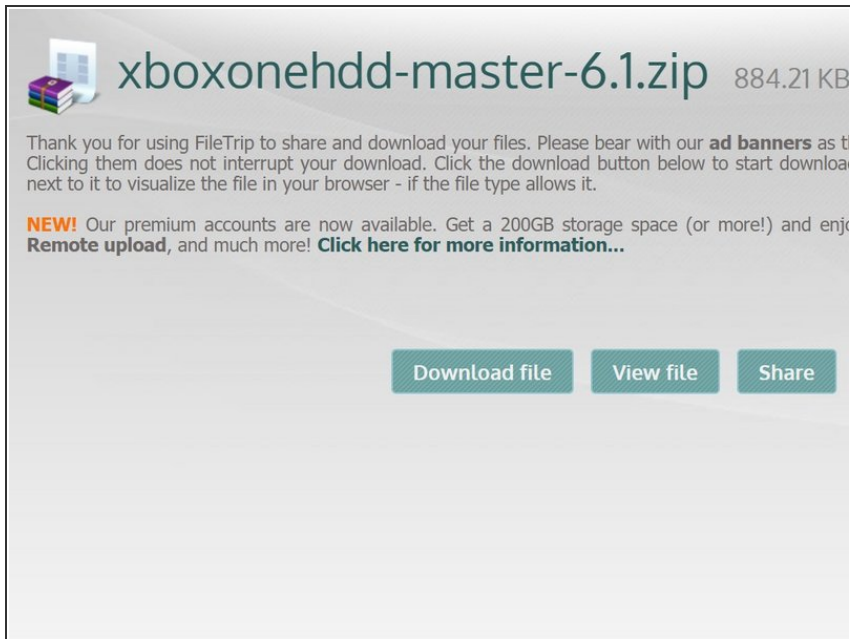
- [Xbox One S Hard Drive Replacement](#)
- You will also need a PC running Windows, and a hard drive reader (Sata Data and Sata Power to USB)
- Seagate drives have been known to cause issues with XBox One software.

Step 3 — Connect Your New HDD



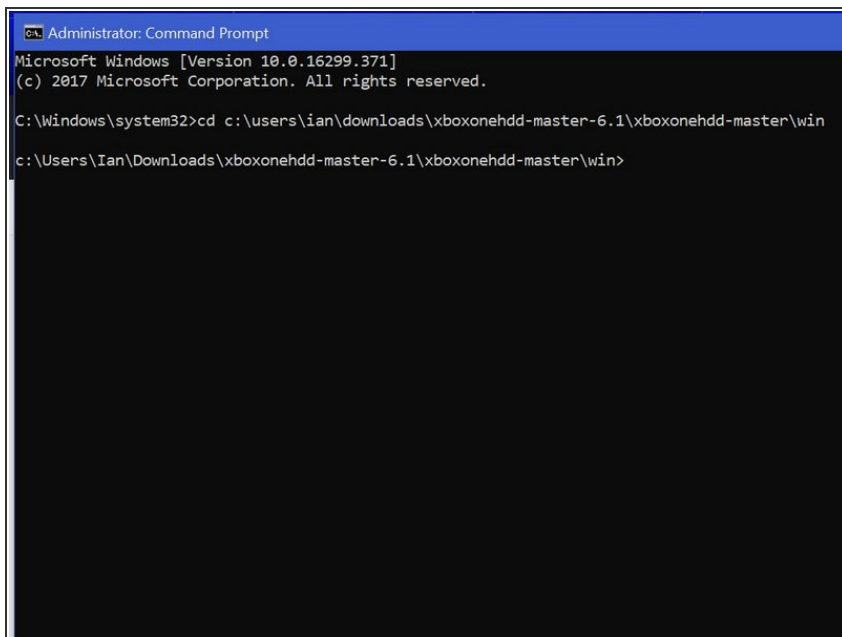
- Connect the new hard drive to the PC. Make sure that the HDD is in a location where it will not be accidentally disconnected.

Step 4 — Download the Script



- This process requires you to run a script to partition the HDD/SSD.
- The links below are for both the download, and the original forum post for the script itself, which was created by user tai1976, of gbatemp.net
- Un-zip the file.
- <https://filetrip.net/dl?RJsmapOKkV>
- <https://gbatemp.net/threads/xbox-one-int...>

Step 5 — Open Command Prompt as Admin



- Press the Windows key/Start menu and type in "CMD", right click, and select 'Run as Administrator'
- Type the command "cd C:\Users\
(Your Name)\Downloads\xboxonehdd-master-6.1\xboxonehdd-master\win"
- Replace (Your name) with the name of your user profile.

Step 6 — Run the Batch File

```
Administrator: Create Xbox One Drive 2018.01.17.6.1

*****
* create_xbox_drive.bat:                                *
* This script creates a correctly formatted Xbox One HDD against the *
* drive YOU select.                                          *
* USE AT YOUR OWN RISK                                       *
*                                                           *
* Created      2016.06.30.2.0                                *
* Last Updated 2018.01.17.6.1                                *
*****

* Administrative permissions required. Detecting permissions... *
* Administrative permissions confirmed                          *
*
* English language availability required. Checking...          *
* English language availability confirmed                      *
*
* This script will temporarily change the command line interface to *
* English and change it back when complete.                   *
*
Press any key to continue . . .
```

- Run the command "create_xbox_drive"
- The next steps are to create a drive that has either 500GB, 1TB, or 2TB storage. If at anytime you get confused, there is a readme file in the folder you extracted that can help out as well.

Step 7 — Follow the On Screen Instructions

```
Administrator: Create Xbox One Drive 2018.01.17.6.1

*****
* create_xbox_drive.bat:                                *
* This script creates a correctly formatted Xbox One HDD against the *
* drive YOU select.                                          *
* USE AT YOUR OWN RISK                                       *
*                                                           *
* Created      2016.06.30.2.0                                *
* Last Updated 2018.01.17.6.1                                *
*****

* Administrative permissions required. Detecting permissions... *
* Administrative permissions confirmed                          *
*
* English language availability required. Checking...          *
* English language availability confirmed                      *
*
* This script will temporarily change the command line interface to *
* English and change it back when complete.                   *
*
Press any key to continue . . .
```

```
Administrator: Create Xbox One Drive 2018.01.17.6.1

[ Englishize Cmd v1.7a ]

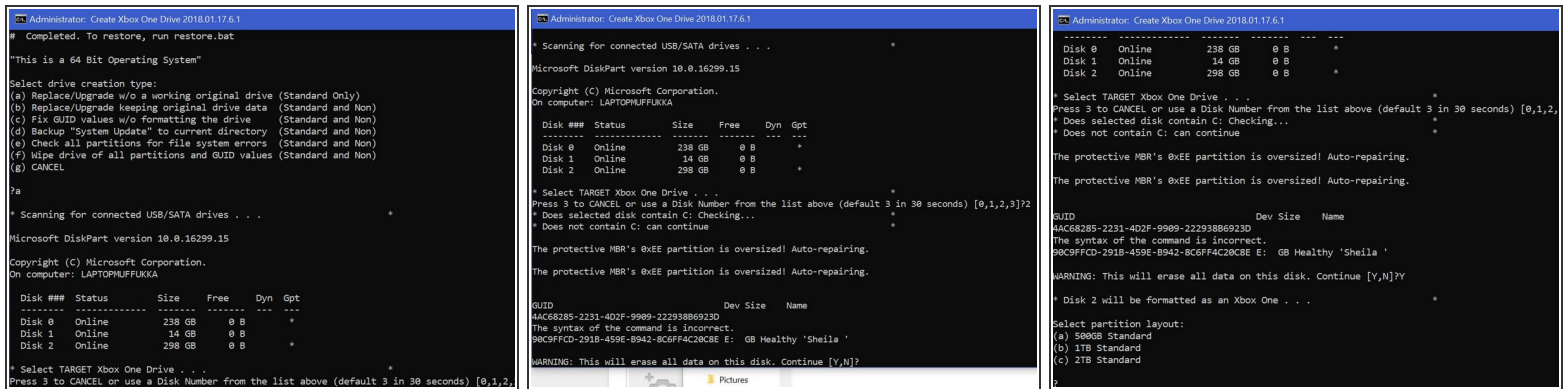
# This script changes command line interface to English.
# Designed for localized non-English Windows Vista or above. Any languages.
# Note 1. A few programs without a .mui aren't affected, e.g. xcopy
#       2. _files_to_process.txt can be customized to cover more/less commands
#       3. English MUI can be installed through Windows Update or Vistalizator
#          to support GUI programs such as Paint.
# Completed. To restore, run restore.bat

"This is a 64 Bit Operating System"

Select drive creation type:
(a) Replace/Upgrade w/o a working original drive (Standard Only)
(b) Replace/Upgrade keeping original drive data (Standard and Non)
(c) Fix GUID values w/o formatting the drive (Standard and Non)
(d) Backup "System Update" to current directory (Standard and Non)
(e) Check all partitions for file system errors (Standard and Non)
(f) Wipe drive of all partitions and GUID values (Standard and Non)
(g) CANCEL
?
```

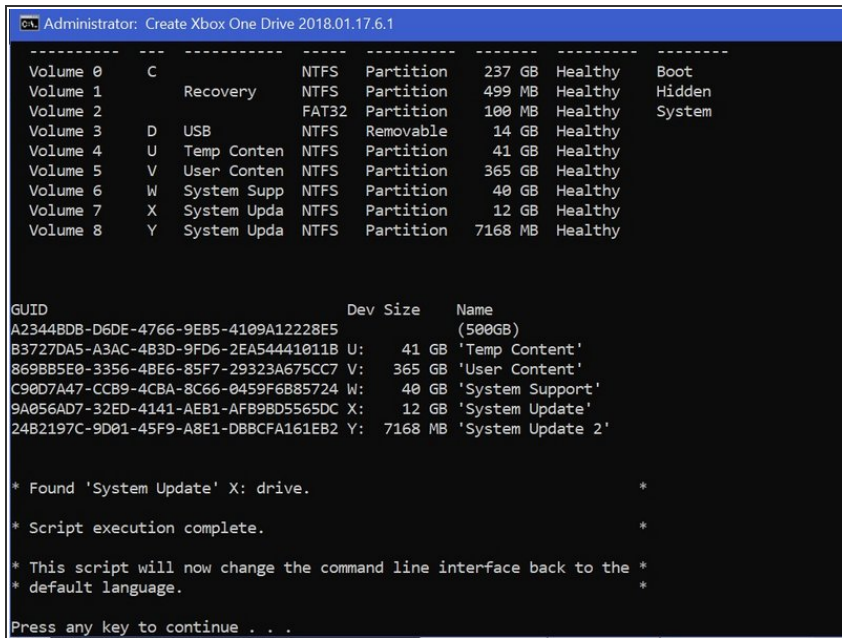
- For this tutorial, we are using the first option (a) Replace/Upgrade w/o a working original drive.

Step 8 — Follow (continued)



- Make sure to choose the right drive to format, Disk 0 is almost always your operating system, DO NOT CHOOSE DISK 0.
- It will ask you to confirm your selection.
- Then you will need to choose the size of the drive you have created.

Step 9 — The Command is Complete.



- Once the command line displays 6 lines of long numbers with "GUID" at the top, the command lines is finished.
- If this doesn't work, clean the disk with diskpart, link below, and try again.
- <http://knowledge.seagate.com/article/s/en...>

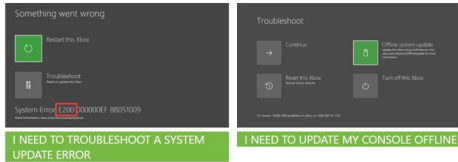
Step 10 — Download the Firmware

Step 1: Welcome to the Xbox One System Update Solution

This solution can help you troubleshoot errors caused by an unsuccessful system update on your Xbox One console. It can also help if you need to update your console offline.

Note If your Xbox One console software doesn't update successfully, you may encounter one of several situations. The console might display an error message or error code during or following the update, or the console might not start correctly after the update is complete.

Do you need to troubleshoot a system update error, or perform an offline system update?



Step 2: Perform an Offline System Update

The Xbox One Offline System Update (OSU) process allows you to update your console by downloading a file to a USB flash drive and then installing that file directly onto your Xbox One console.

To use the Offline System Update, you'll need:

- A Windows-based PC with an Internet connection and a USB port.
- A USB flash drive with a minimum 4 GB of space formatted as NTFS.

Which Xbox One console are you updating?



To use the Offline System Update, you'll need:

- A Windows-based PC with an Internet connection and a USB port.
- A USB flash drive with a minimum 4 GB of space formatted as NTFS.

Most USB flash drives come formatted as FAT32 and will have to be reformatted to NTFS. Note that formatting a USB flash drive for this procedure will erase all files on it. Back up or transfer any files on your flash drive before you format the drive. For information about how to format a USB flash drive to NTFS using a PC, see [How to format a flash drive to NTFS on Windows](#).

1. Plug your USB flash drive into a USB port on your computer.
2. Open the Offline System Update file OSU1.
3. Click **Save** to save the console update .zip file to your computer.
4. Unzip the file by right-clicking on the file and selecting **Extract all** from the pop-up menu.
5. Copy the **\$SystemUpdate** file from the .zip file to your flash drive.

Note The files should be copied to the root directory, and there shouldn't be any other files on the flash drive.

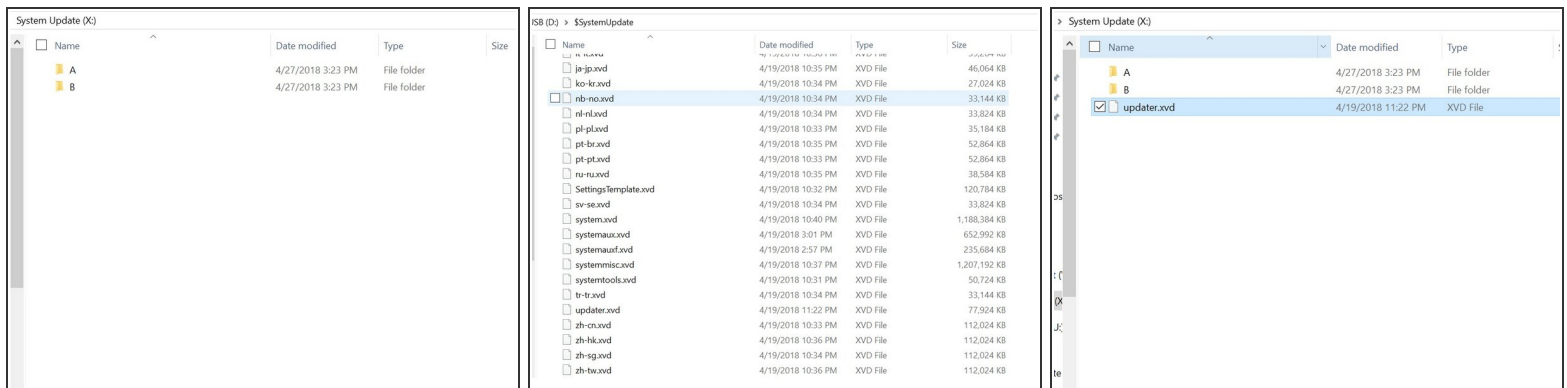
6. Unplug the USB flash drive from your computer.

- You need to go to the XBox official site and download a file called OSU 1.

- <https://support.xbox.com/en-US/xbox-one/...>

- Select "I need to update my console offline"
- Select "Xbox One S or Xbox One X"
- Click the green link "OSU1" to start the download.

Step 11 — Copy files



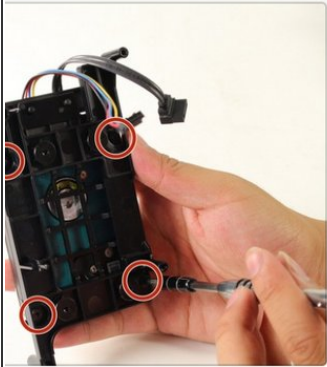
- Navigate to the System Update (X) drive, and create 2 folders, one labeled "A" and one "B"
- Extract all of the files from OSU1, and copy everything in \$SystemUpdate, except for "updater.xvd"
- Paste these files in the folders "A" and "B" that you created.
- Copy "updater.xvd" from \$SystemUpdate and paste it in the root of System Update (X)

Step 12 — Put the Hard Drive in the Xbox

Xbox One S Hard Drive Replacement

Written By: Andrew (and 3 other contributors)

Comments: 2 Favorites: 6 Completions: 7



Difficulty

Steps

Time Required

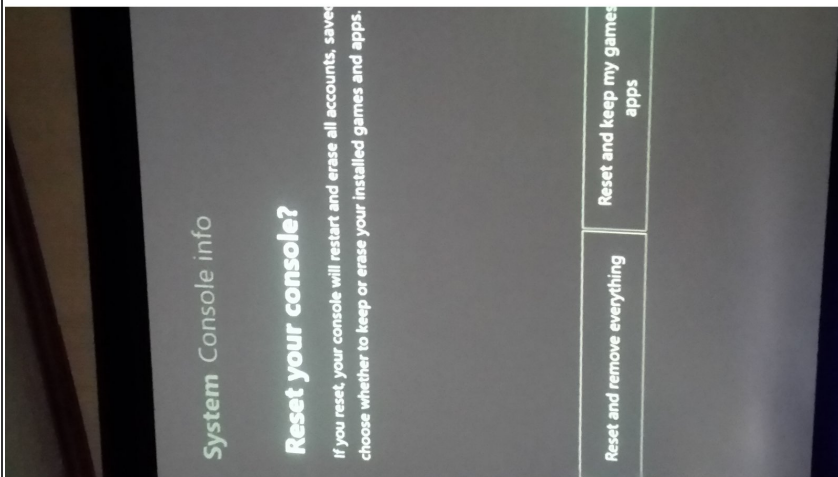
30

Sections

Flags

- Safely eject the media and put it back into the Xbox
- Reassemble the Xbox and then start it up
- [Xbox One S Hard Drive Replacement](#)
- If the Xbox gives you trouble, Factory Resetting it will fix it.
- <https://support.xbox.com/en-US/xbox-one/...>

Step 13 — Reset console



- Some users have experienced sign in issues after an ssd upgrade. If this occurs, simply reset the console

(keep games and apps if need be.)
and that should resolve the issue.

- Those who have their Xbox set to "energy saving" mode for startup may experience a 20-30 second black screen before boot. Changing this setting to "instant on" resolves this issue.
- Now enjoy 20x faster r/w speeds and loading times a fraction that of a standard HDD.

Step 14 — You are Finished



- You are now finished, enjoy your XBox!
- Note: This does work with Solid State Drives.

To reassemble your device, put the hard drive back in the Xbox One S and reassemble.