



Installing MacBook Pro 15" Unibody Mid 2009 Dual Hard Drive

Use this guide to install a second hard drive in place of the optical drive.

Written By: Brittany McCrigler



INTRODUCTION

There are many benefits to adding a second hard drive to your laptop such as improved speeds, greater storage space, and less heartache when installing new software. Use this guide to install one using our optical bay hard drive enclosure.



TOOLS:

- [Phillips #00 Screwdriver](#) (1)
- [Spudger](#) (1)
- [P6 Pentalobe Screwdriver 2009 MacBook Pro Battery](#) (1)



PARTS:

- [1 TB SSD Hybrid 2.5" Hard Drive](#) (1)
Upgrade Kit
This kit contains the drive and all tools needed.
- [500 GB SSD Hybrid 2.5" Hard Drive](#) (1)
Upgrade Kit
This kit contains the drive and all tools needed.
- [Unibody Laptop Dual Drive](#) (1)
- [250 GB SSD](#) (1)
- [500 GB SSD](#) (1)
- [1 TB SSD](#) (1)

Step 1 — Lower Case



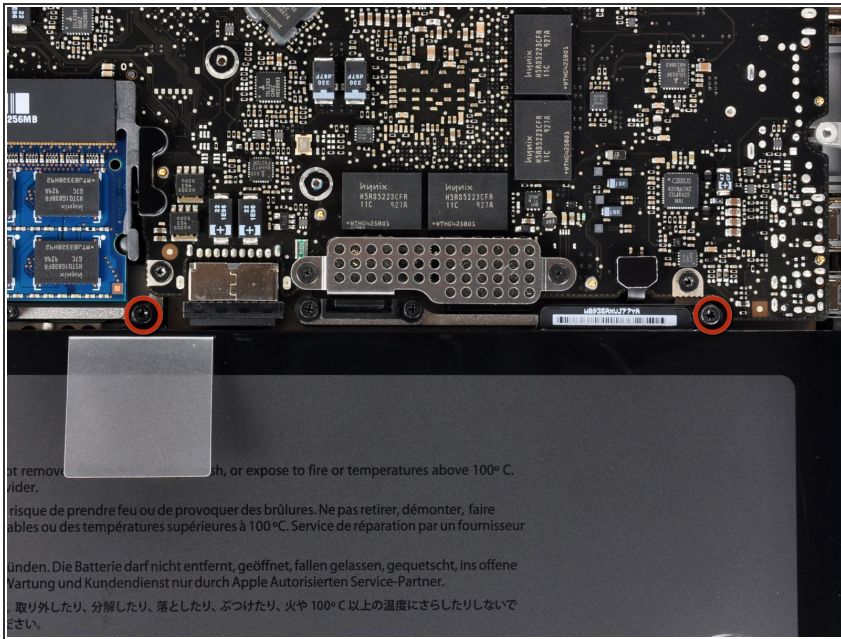
- Remove the following ten screws securing the lower case to the upper case:
 - Seven 3 mm Phillips screws.
 - Three 13.5 mm Phillips screws.

Step 2



- Using both hands, lift the lower case near the vent to pop it off two clips securing it to the upper case.
- Remove the lower case and set it aside.

Step 3 — Battery



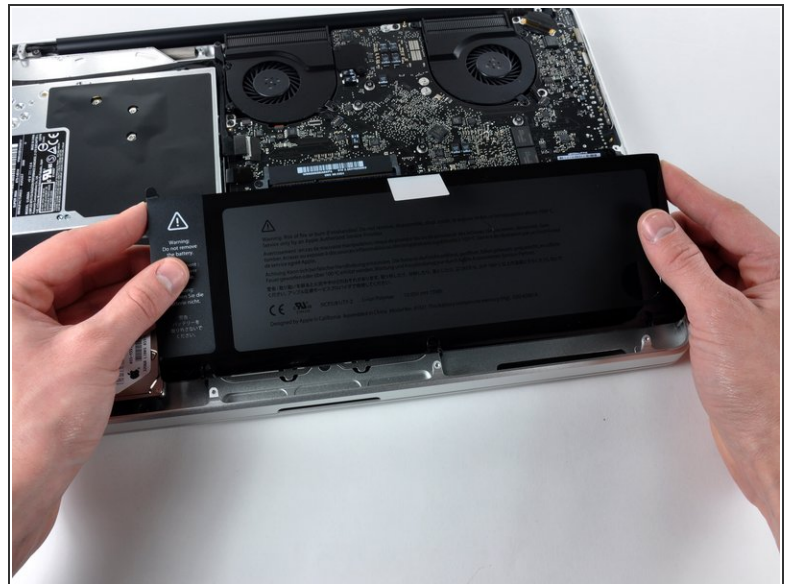
- Remove the two [5-Point Pentalobe](#) screws along the top edge of the battery.
- ⓘ You do not necessarily have to follow steps 3-6 to remove the battery in order to replace the hard drive. However it is recommended to remove all power sources from electronics before working on them.

Step 4



- Use the tip of a spudger to bend back the finger of the "Warning: Do not remove the battery" sticker while you remove third five-point Pentalobe screw hidden underneath.

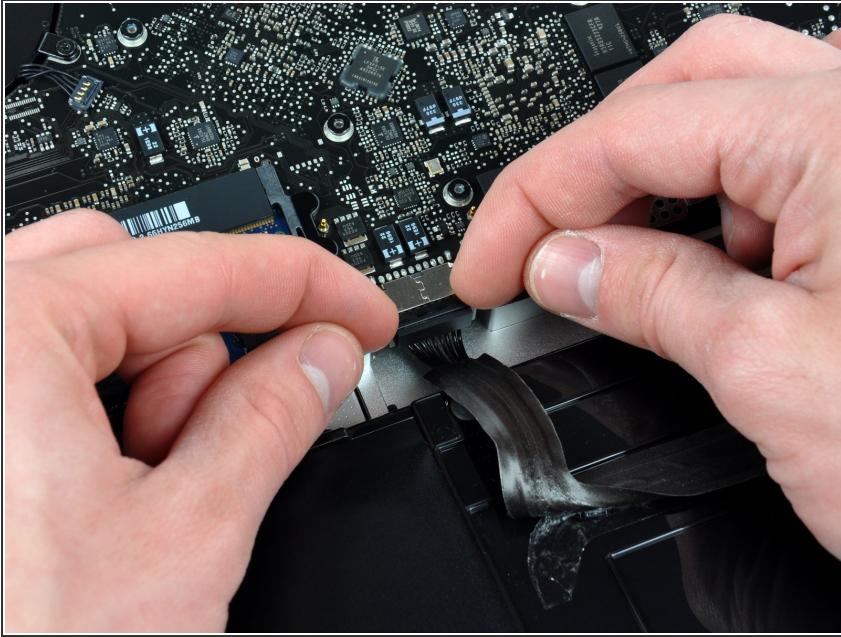
Step 5



- Lift the battery by its plastic pull tab and slide it away from the long edge of the upper case.

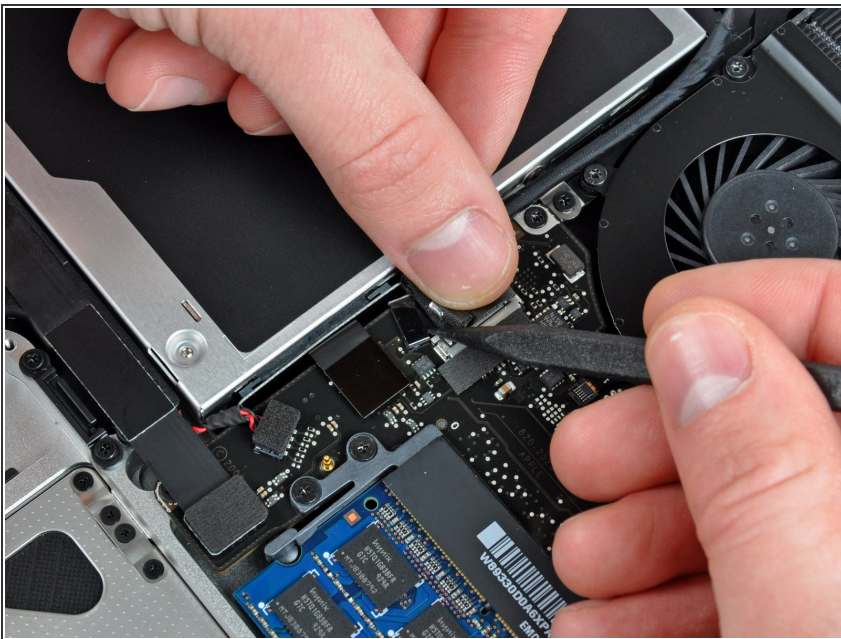
⚠ Do not try to completely remove the battery just yet.

Step 6



- Tilt the battery back enough to access the battery cable connector.
- Pull the battery cable connector away from its socket on the logic board and remove the battery from the upper case.
- ✦ If you're installing a new battery, you should [calibrate](#) it after installation.

Step 7 — Optical Drive

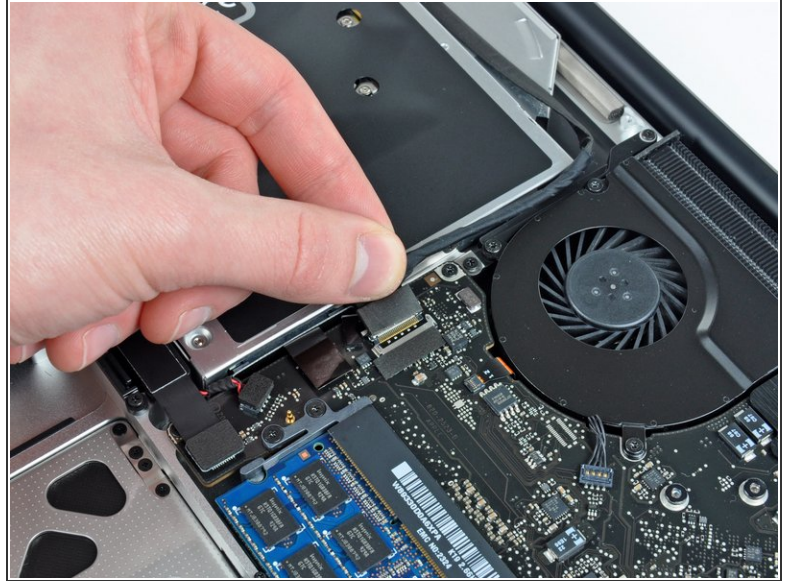
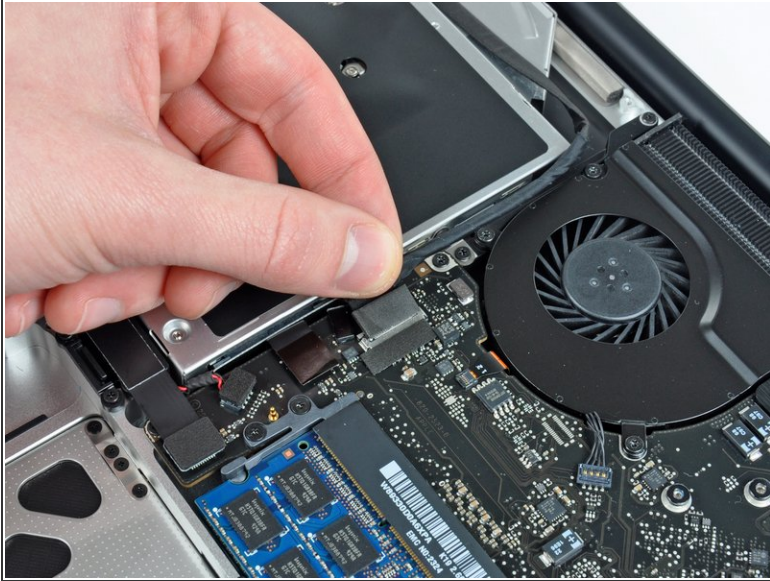


- ⚠ Apple sticks a small strip of clear plastic with adhesive applied to one side to the logic board behind the camera cable connector to keep it in its socket. When moving it out of the way, be sure not to break any surface-mount components off the logic board.

- Hold the end of the cable retainer down with one finger while you use the tip of a spudger to slightly lift the

other end and rotate it away from the camera cable connector.

Step 8



- Disconnect the camera cable by pulling the male end straight away from its socket.
- ⓘ Pull the connector parallel to the face of the logic board, not straight up.


Step 9




- Peel the camera cable off the adhesive securing it to the optical drive.

Step 10



 This step is only required if you have an anti-glare display. If you have a glossy display, skip this step.

- Disconnect the Bluetooth cable by pulling the male end straight away from its socket.

 Pull the connector parallel to the face of the logic board, not straight up.

- Use the flat end of a spudger to pry the Bluetooth antenna cable from its socket on the board.

Step 11

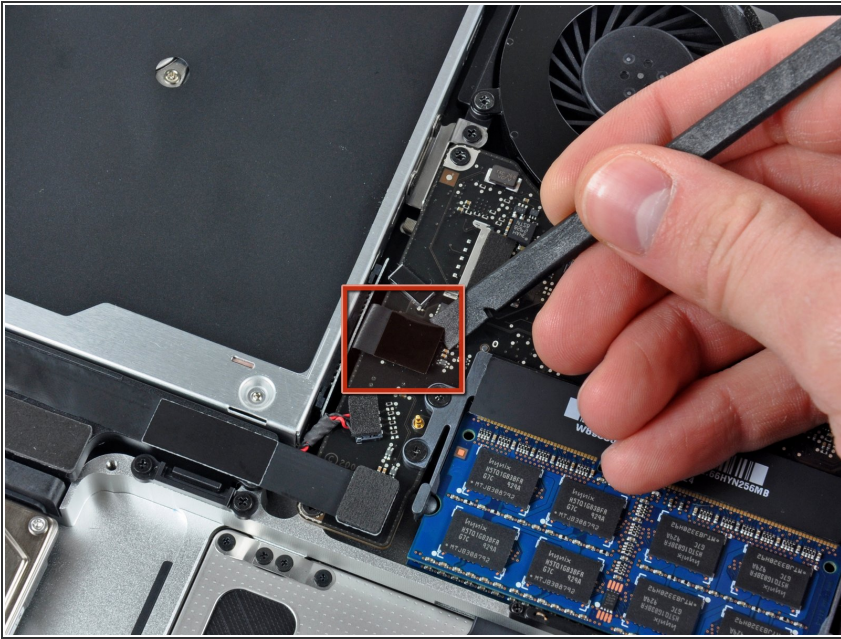


- i** This step is only required if you have an anti-glare display.

 - Remove the two 8 mm Phillips screws securing the Bluetooth/camera cable retainer to the upper case.
- i** One of the screws may remain captive in the Bluetooth/camera cable ground loop. If replacing the display, be sure to transfer this screw to the new unit.

 - Lift the Bluetooth board/cable retainer assembly out of the upper case.

Step 12



- Use a spudger to pry the optical drive connector straight up off the logic board.

Step 13



- Remove the single 3.5 mm Phillips screw securing the inner side of the optical drive to the upper case.

Step 14



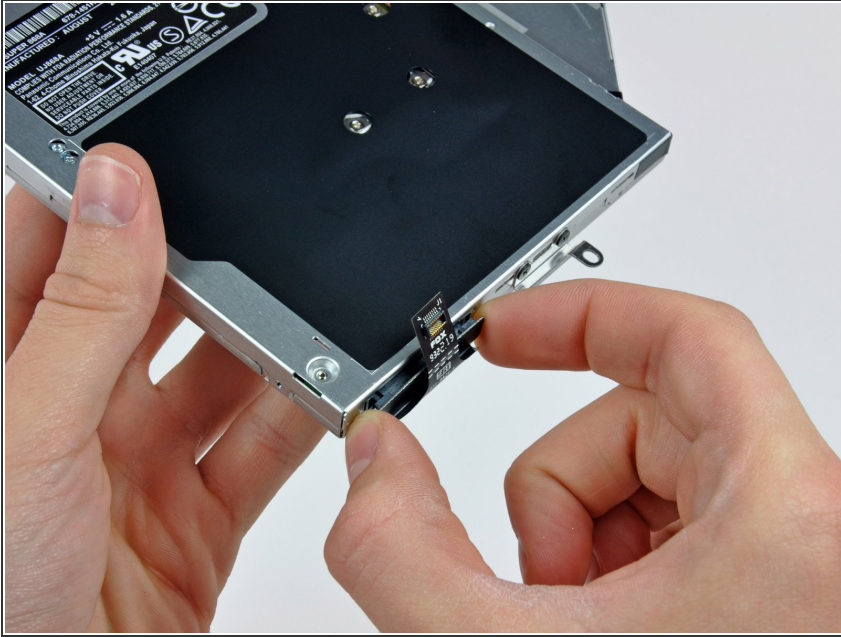
- Remove the two 3.5 mm Phillips screws securing the outer side of the optical drive to the upper case.

Step 15



- Lift the optical drive from its left edge and pull it out of the upper case.

Step 16 — Optical Drive



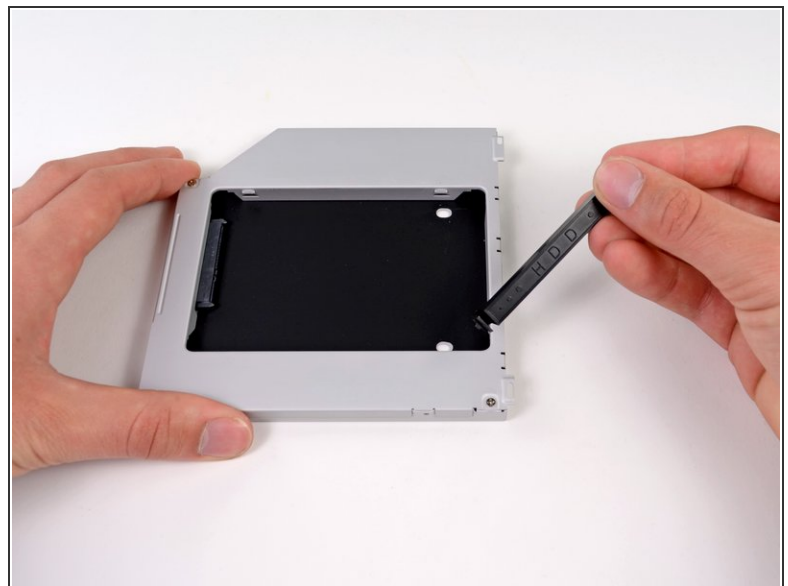
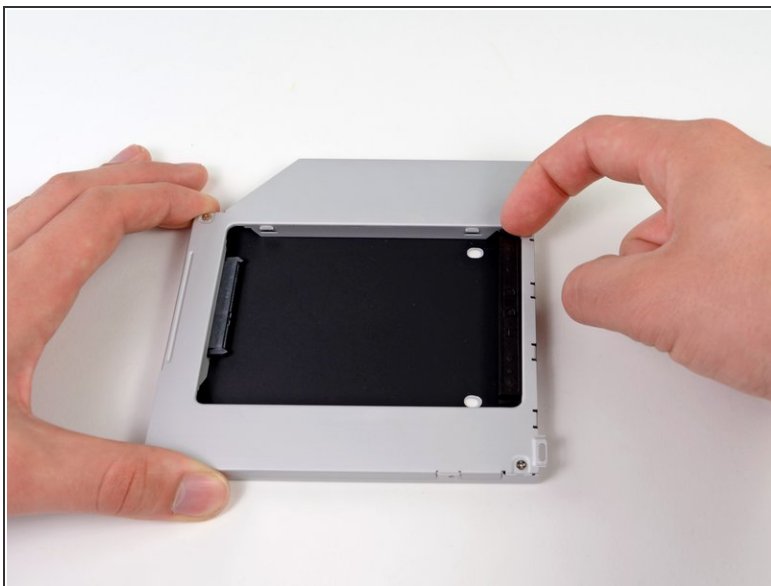
- Remove the optical drive cable by pulling it straight away from the optical drive.
- ⓘ If you have a CD or any other object jammed in your optical drive, we have an [optical drive repair guide](#).

Step 17



- Remove the two black Phillips #0 screws securing the small metal mounting bracket. Transfer this bracket to your new optical drive or [hard drive enclosure](#).

Step 18 — Dual Hard Drive



- Remove the plastic spacer from the optical bay hard drive enclosure by pressing in on one of the clips on either side and lifting it up and out of the enclosure.

Step 19



- Make sure that the hard drive connectors are facing down before placing it into the enclosure.
- Gently place the hard drive into the enclosure's hard drive slot.
- While firmly holding the enclosure in place with one hand, use your other hand to press the hard drive into the enclosure connectors.

Step 20



- Once the hard drive is snug, reinsert the plastic spacer while holding the hard drive against the bottom of the enclosure.

Step 21



- Use two Phillips #1 screws to secure the drive to its enclosure.


Step 22



- Attach the optical drive bracket to the new enclosure with two Phillips #0 screws.
- Reconnect any cables you have removed from the original optical drive onto the optical bay enclosure.

Step 23



 Don't ditch that drive! You can still use your optical drive externally with the help of our [SATA Optical Drive USB Cable](#).

- Align the cable's SATA connector with the drive's port and plug in securely.
- Plug the USB connector into your laptop and your optical drive is ready for use.

To reassemble your device, follow these instructions in reverse order.