



# Installing Mercedes W166 RAV Tool Box

Installation of a Roadside Assistance Vehicle Tool Box

Written By: Stefan





## TOOLS:

- [Hole Punch](#) (1)
- [M10 Allen Socket](#) (1)
- [M6 Allen Socket](#) (1)
- [M8 Allen Socket](#) (1)
- [T30 Torx Socket](#) (1)

## Step 1 — RAV Tool Box



- 1. Vehicle Preparation
- Remove all loose items from the cargo area. Remove the cargo floor, spare wheel and tool tray.
- Remove rear seats as in WIS instructions (Save seat mounting hardware)

## Step 2



- Remove bolt from rear deck sill plate
- Unclip rear deck sill plate and remove.



### Step 3



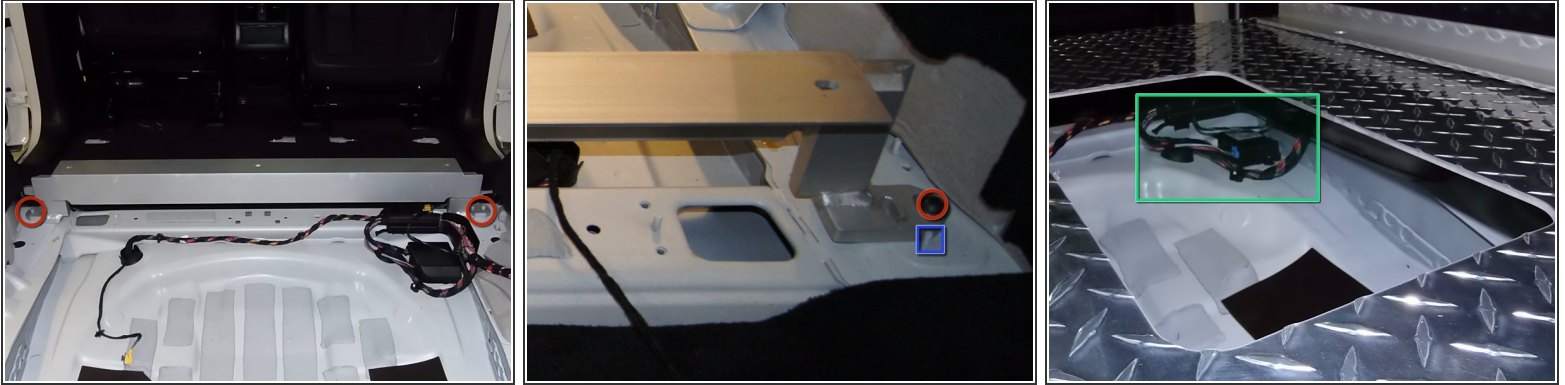
- *Remove plastic covers*
- Remove Felt liner

### Step 4



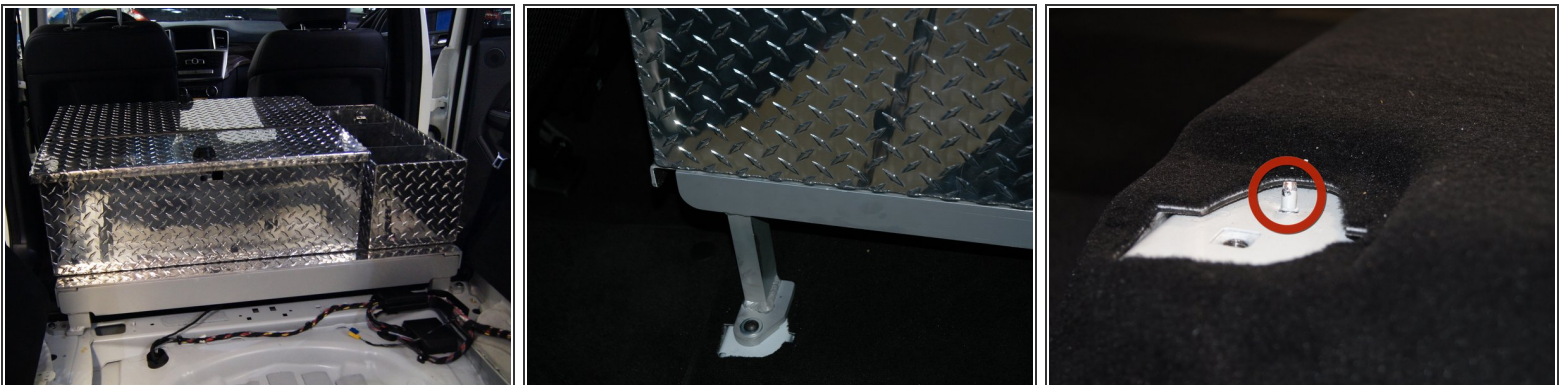
- Remove side consoles and center support (T30 10 Bolts)

## Step 5



- Install and bolt down center support bracket (2 Bolts M10 x 1.5 x35mm 6mm Allen cap, 10mm flat washers)
- Pay attention to the pin to align properly
- NOTE: To service TPMS control module remove drawers and service through access door in bottom plate.

## Step 6



- 2. Installation of Front Box
- Place box inside vehicle. It fits through the rear doors. This is a 2 person job.

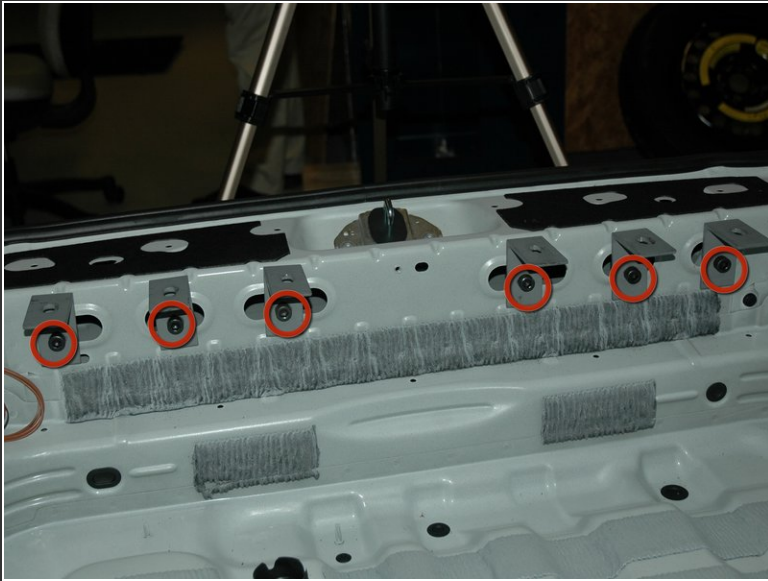
**⚠ Mount front legs on front consoles, tighten loosely (2 Bolts M10 x 1.5 x35mm 6mm Allen cap, 10mm flat washers).** Pay attention not to break off the alignment pin, which will be inside the post after mounting.

**i DO NOT mount the box to the center bracket at this point**

This document was generated on 2019-09-18 07:01:56 PM (MST).



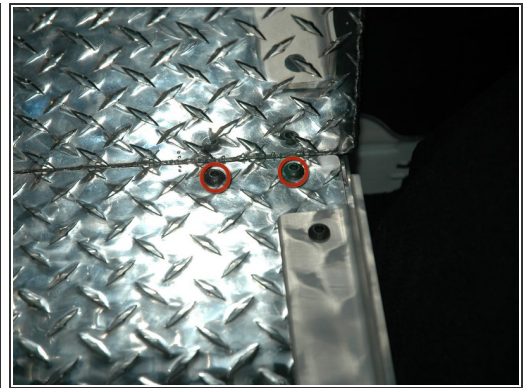
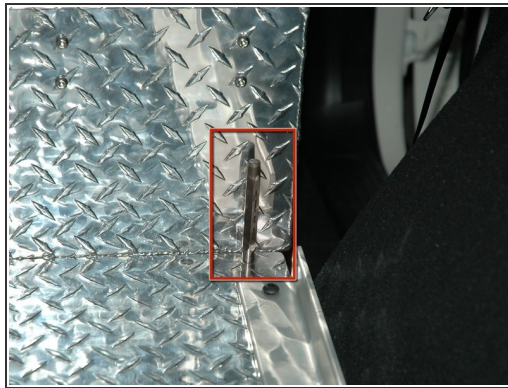
## Step 7



### ● 3. Installation of the rear plate

- Install 6 rear support brackets and tighten finger tight

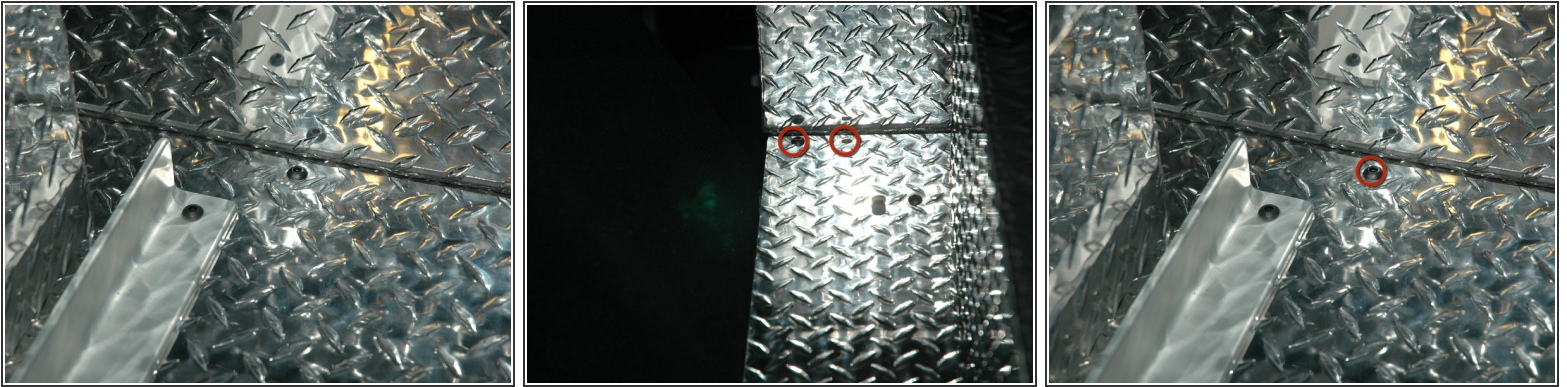
## Step 8



- Set plate on brackets and align, overlapping the base plate of the front box on the center support bracket.
- Use punch tool to align holes and drop in 2 bolts M8 x 1.25 x 40mm in holes on each side and one bolt M8 x 1.25 x 30 in the center hole.



## Step 9



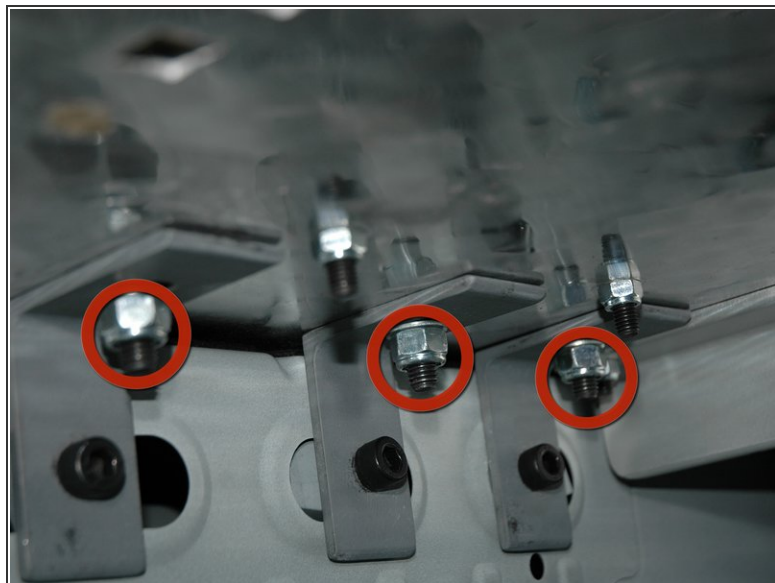
- Secure plate to center support bracket with 2 bolts on the outside and on in the middle, align and finger tighten

## Step 10



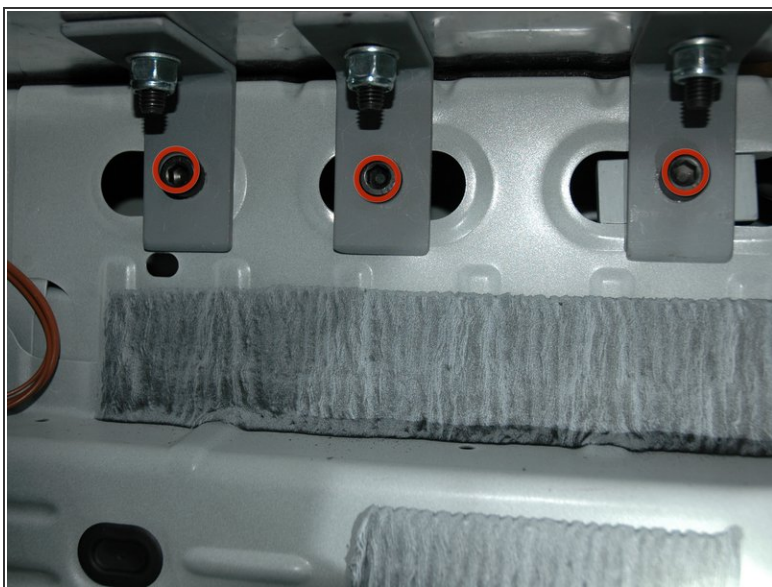
- Install 3 bolts securing base plate to vehicle frame
- and 4th bolt securing the tool box rail to the base plate and vehicle frame.
- Put bolt sizes in

## Step 11



- Install and loosely tighten 3 M8 black oxide bolts on each side until L bracket touches the underside of the base plate

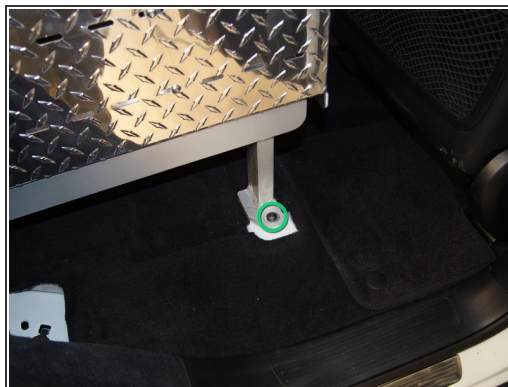
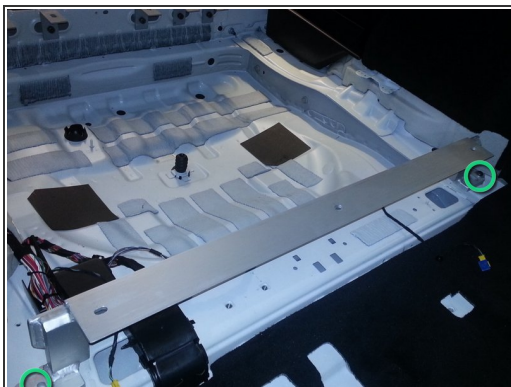
## Step 12



- Fully tighten M8 (20 Nm)
- Fully tighten M6 (8 Nm)

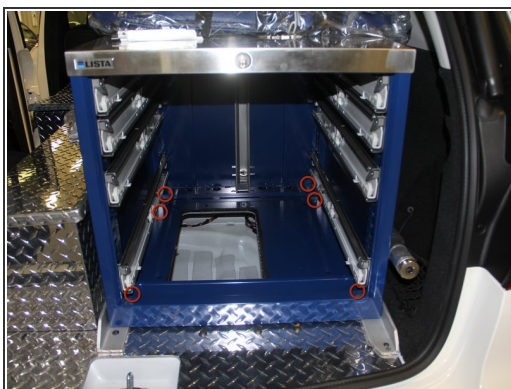


## Step 13



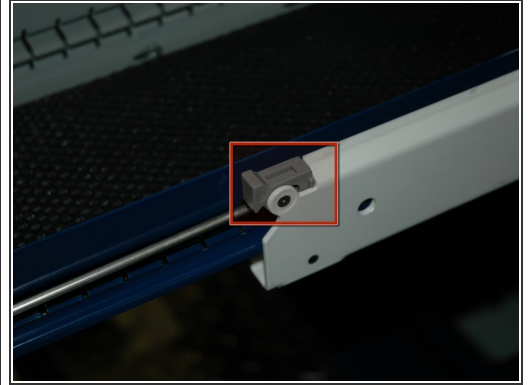
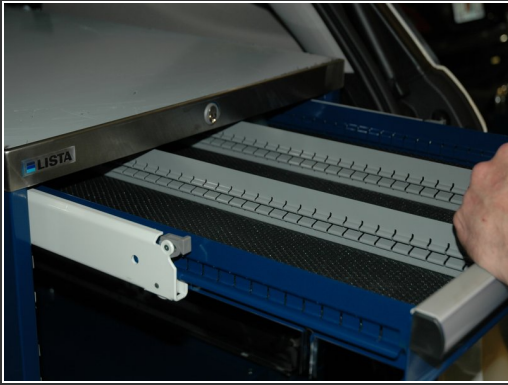
- Fully tighten M10 bolts (35 Nm)

## Step 14



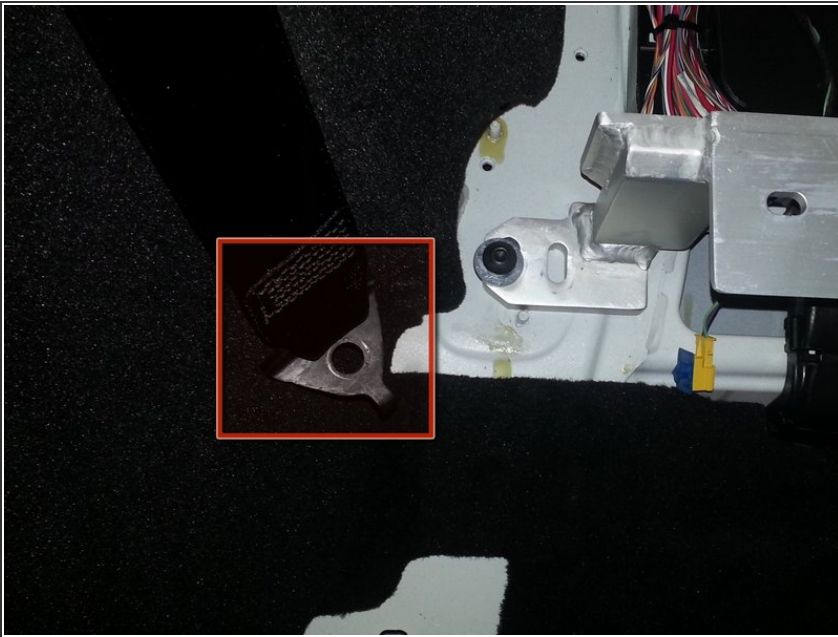
- 4. Install box
- Remove drawers and slide box on rail guides, align with bolt holes
- Install 6 (M12) bolts and fully tighten to 66 Nm

## Step 15



- Install drawers.
- After drawer is installed move rail clip to locked position

## Step 16



- Fasten seat belt with bolt to floor